




 Single Family

 2125 SQFT

 3 Beds

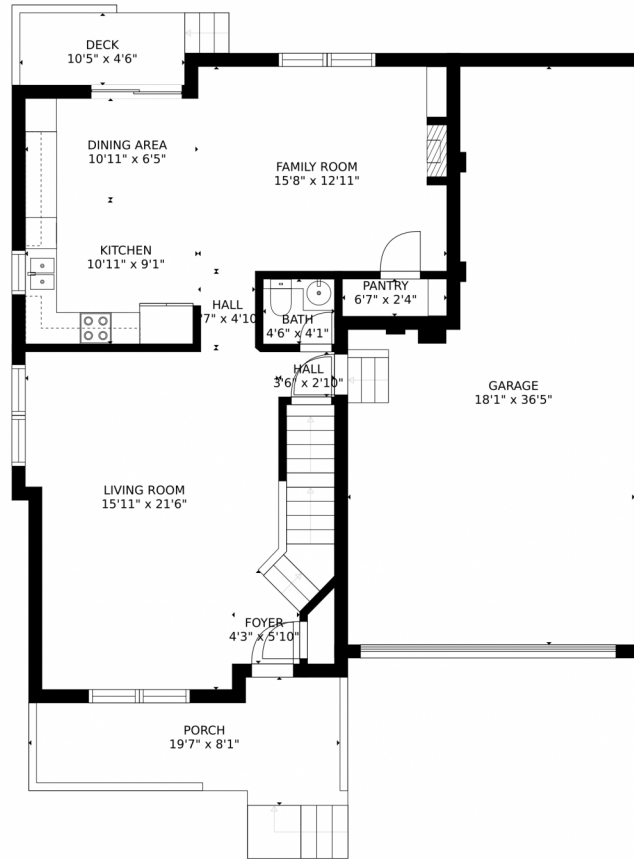
 2/1 Baths



**Taylor Haas**  
303-665-7368  
taylorh@coloradorpm.com  
<https://www.coloradorpm.com/available-rental-properties-denver>



# 16664 E Prairie Wind Ave., Parker, CO 80138 – Main Level



GROSS INTERNAL AREA  
FLOOR 1: 7 sq. ft, FLOOR 2: 829 sq. ft  
FLOOR 3: 1229 sq. ft, EXCLUDED AREAS:  
UNFINISHED BASEMENT: 815 sq. ft, GARAGE: 540 sq. ft  
DECK: 60 sq. ft, PORCH: 149 sq. ft  
TOTAL: 2065 sq. ft  
MEASUREMENTS CALCULATED BY V1Photos.COM ARE DEEMED HIGHLY RELIABLE BUT NOT GUARANTEED.



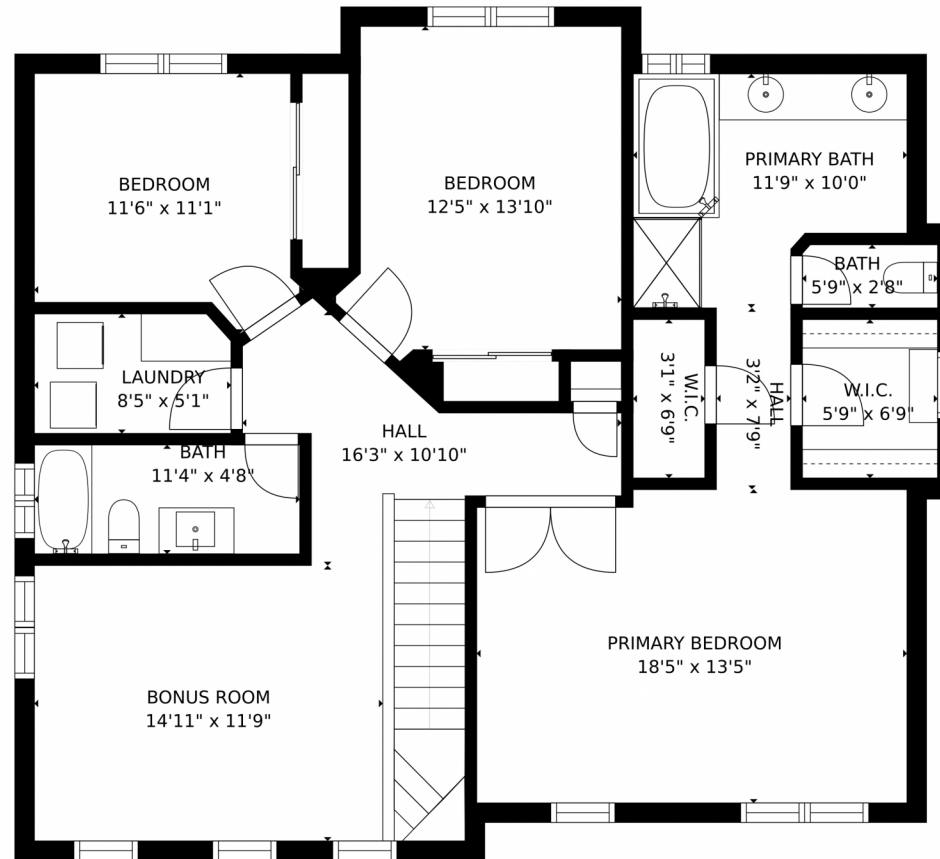
Disclaimer: Sizes and Dimensions are Approximate, Actual May Vary.



**Taylor Haas**  
303-665-7368  
taylorh@coloradorpm.com  
<https://www.coloradorpm.com/available-rental-properties-denver>



16664 E Prairie Wind Ave., Parker, CO 80138 – Second Level



GROSS INTERNAL AREA  
FLOOR 1: 7 sq. ft, FLOOR 2: 829 sq. ft  
FLOOR 3: 1229 sq. ft, EXCLUDED AREAS:  
UNFINISHED BASEMENT: 815 sq. ft, GARAGE: 540 sq. ft  
DECK: 60 sq. ft, PORCH: 149 sq. ft  
TOTAL: 2065 sq. ft  
MEASUREMENTS CALCULATED BY V1Photos.COM ARE DEEMED HIGHLY RELIABLE BUT NOT GUARANTEED.



Disclaimer: Sizes and Dimensions are Approximate, Actual May Vary.

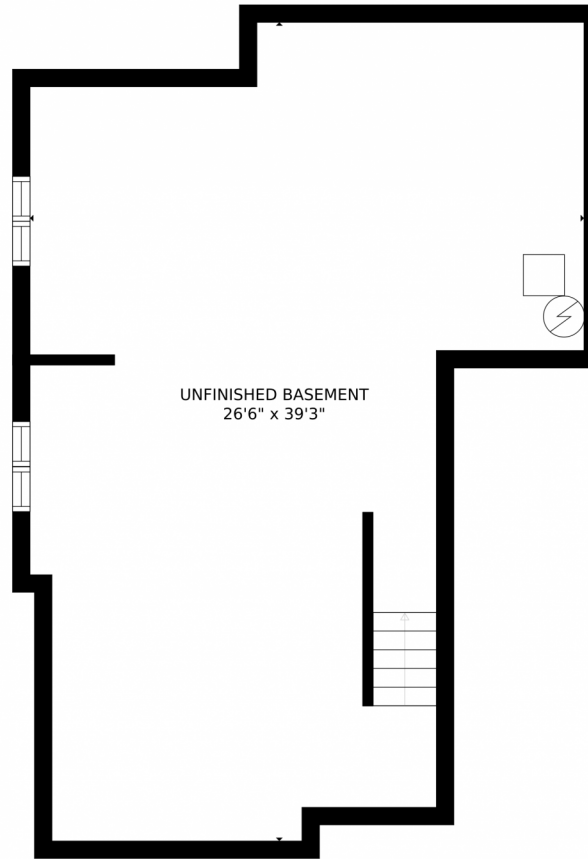


**Taylor Haas**  
303-665-7368  
taylorh@coloradorpm.com  
<https://www.coloradorpm.com/available-rental-properties-denver>



Scan code  
for more  
property  
details





UNFINISHED BASEMENT  
26'6" x 39'3"

GROSS INTERNAL AREA  
FLOOR 1: 7 sq. ft, FLOOR 2: 829 sq. ft  
FLOOR 3: 1229 sq. ft, EXCLUDED AREAS:  
UNFINISHED BASEMENT: 815 sq. ft, GARAGE: 540 sq. ft  
DECK: 60 sq. ft, PORCH: 149 sq. ft  
TOTAL: 2065 sq. ft

MEASUREMENTS CALCULATED BY V1Photos.com ARE DEEMED HIGHLY RELIABLE BUT NOT GUARANTEED.



Disclaimer: Sizes and Dimensions are Approximate, Actual May Vary.



**Taylor Haas**  
303-665-7368  
taylorh@coloradorpm.com  
<https://www.coloradorpm.com/available-rental-properties-denver>

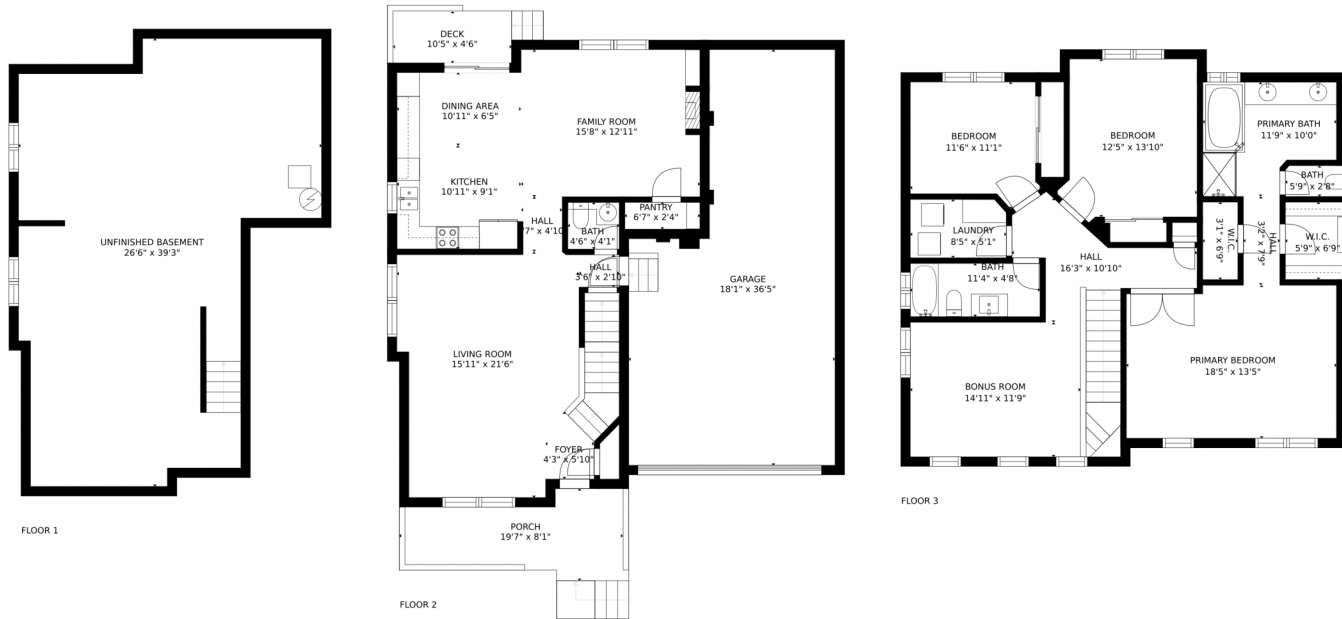


Scan code  
for more  
property  
details





# 16664 E Prairie Wind Ave., Parker, CO 80138 – All Levels



GROSS INTERNAL AREA  
FLOOR 1: 7 sq. ft, FLOOR 2: 829 sq. ft  
FLOOR 3: 1229 sq. ft, EXCLUDED AREAS:  
UNFINISHED BASEMENT: 815 sq. ft, GARAGE: 540 sq. ft  
DECK: 60 sq. ft, PORCH: 149 sq. ft  
TOTAL: 2065 sq. ft  
MEASUREMENTS CALCULATED BY V1Photos.com ARE DEEMED HIGHLY RELIABLE BUT NOT GUARANTEED.



Disclaimer: Sizes and Dimensions are Approximate, Actual May Vary.



**Taylor Haas**  
303-665-7368  
taylorh@coloradorpm.com  
<https://www.coloradorpm.com/available-rental-properties-denver>



Scan code  
for more  
property  
details

