



455 S Nelson Street
 Lakewood, CO 80226
 COMMUNITY: Glennon Heights

MLS # 9435753
 PRICE \$730,000



Single Family



2658 SQFT



3 Beds



2 Baths



2 Car



0.23 Acre

PROPERTY DETAILS

Welcome home to this newly renovated house. The coziness this home offers will melt the cold weather away in minutes. Drive up your personal driveway to the nicely sized garage. It's 450 square feet to be exact. Fifty feet larger than your standard size. Imagine resting your feet on the ottoman while dinner is cooking or gaze out onto the back fully fenced backyard with mountain views and plan your next outing. This home officially has 3 bedrooms with 2 bonus rooms that can accommodate any need. The basement is not only encompassing the entire footprint of the home, it also has a separate entry! How convenient is that?? It's perfect for roommates, entertaining family or even to use as a separate at home workspace.



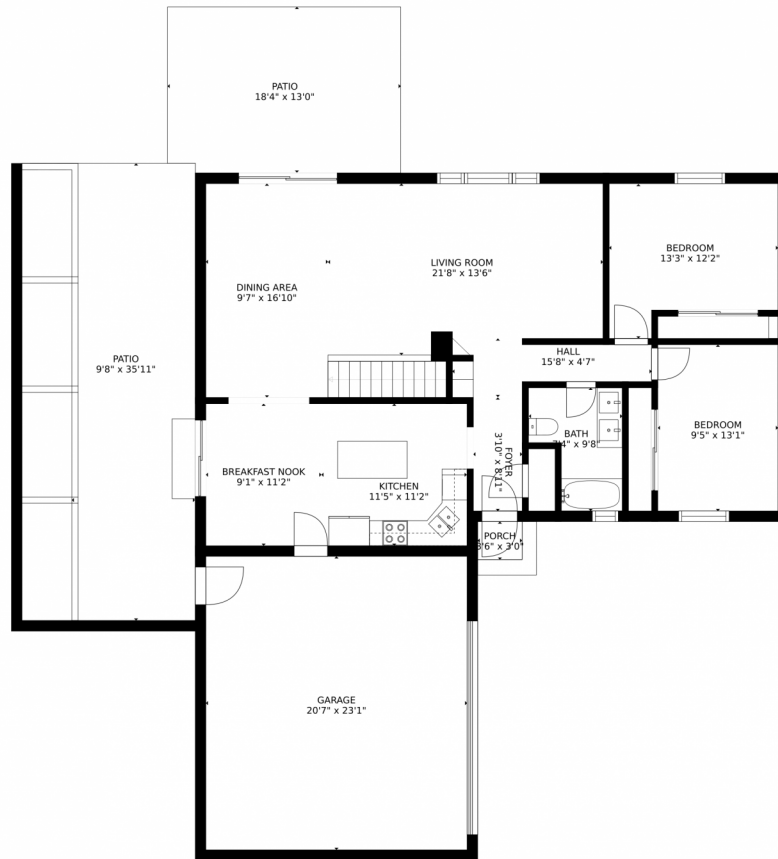
Nancy Henderson
 832-279-9504
 nancy@highridgerealty.co
 http://www.highridgerealty.co



Scan code
 for more
 property
 details



455 S Nelson Street, Lakewood, CO 80226 – Main Level



GROSS INTERNAL AREA
FLOOR 1: 1215 sq. ft. FLOOR 2: 1215 sq. ft.
EXCLUDED AREAS: , PATIO: 754 sq. ft.
GARAGE: 474 sq. ft. PORCH: 10 sq. ft.
TOTAL: 2429 sq. ft.

MEASUREMENTS CALCULATED BY V1Photos.com ARE DEEMED HIGHLY RELIABLE BUT NOT GUARANTEED.



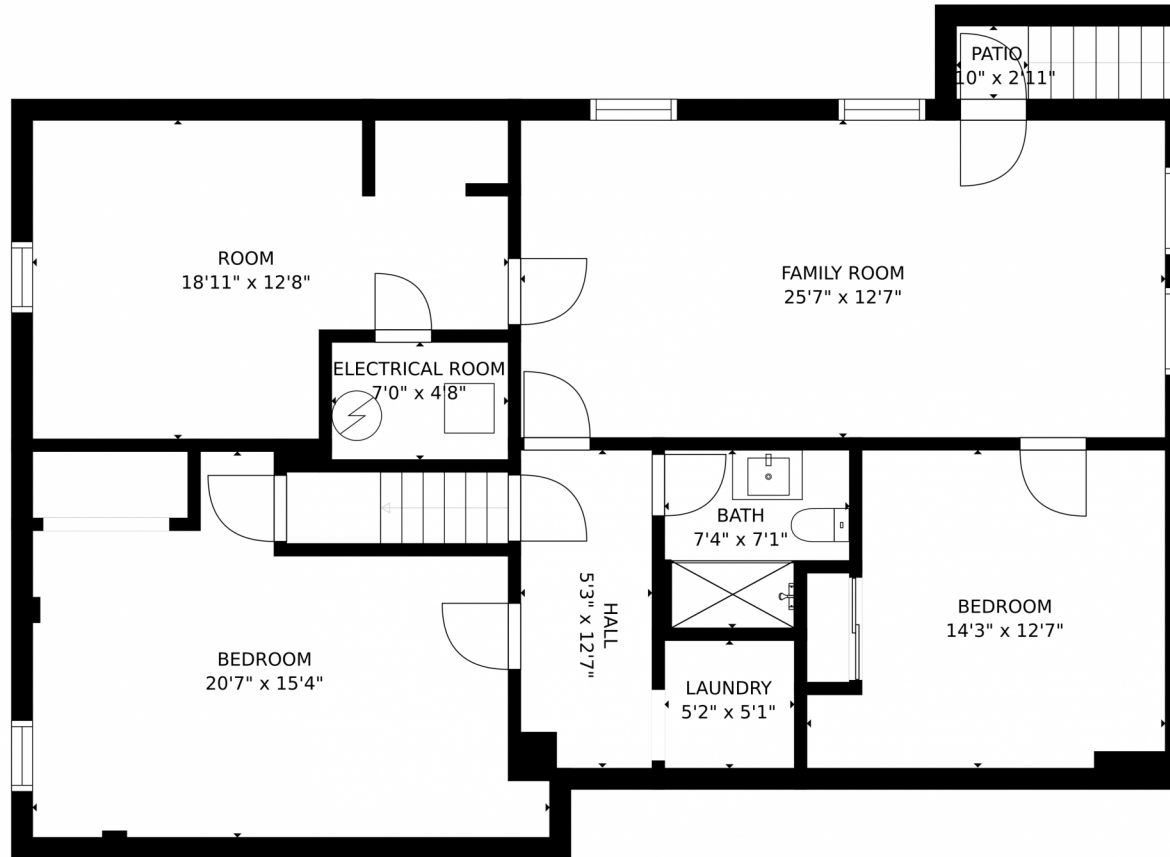
Disclaimer: Sizes and Dimensions are Approximate, Actual May Vary.



Nancy Henderson
832-279-9504
nancy@highridgerealty.co
<http://www.highridgerealty.co>



455 S Nelson Street, Lakewood, CO 80226 – Lower Level



GROSS INTERNAL AREA
FLOOR 1: 1215 sq. ft, FLOOR 2: 1215 sq. ft
EXCLUDED AREAS: , PATIO: 754 sq. ft
GARAGE: 474 sq. ft, PORCH: 10 sq. ft
TOTAL: 2429 sq. ft
MEASUREMENTS CALCULATED BY V1Photos.com ARE DEEMED HIGHLY RELIABLE BUT NOT GUARANTEED.



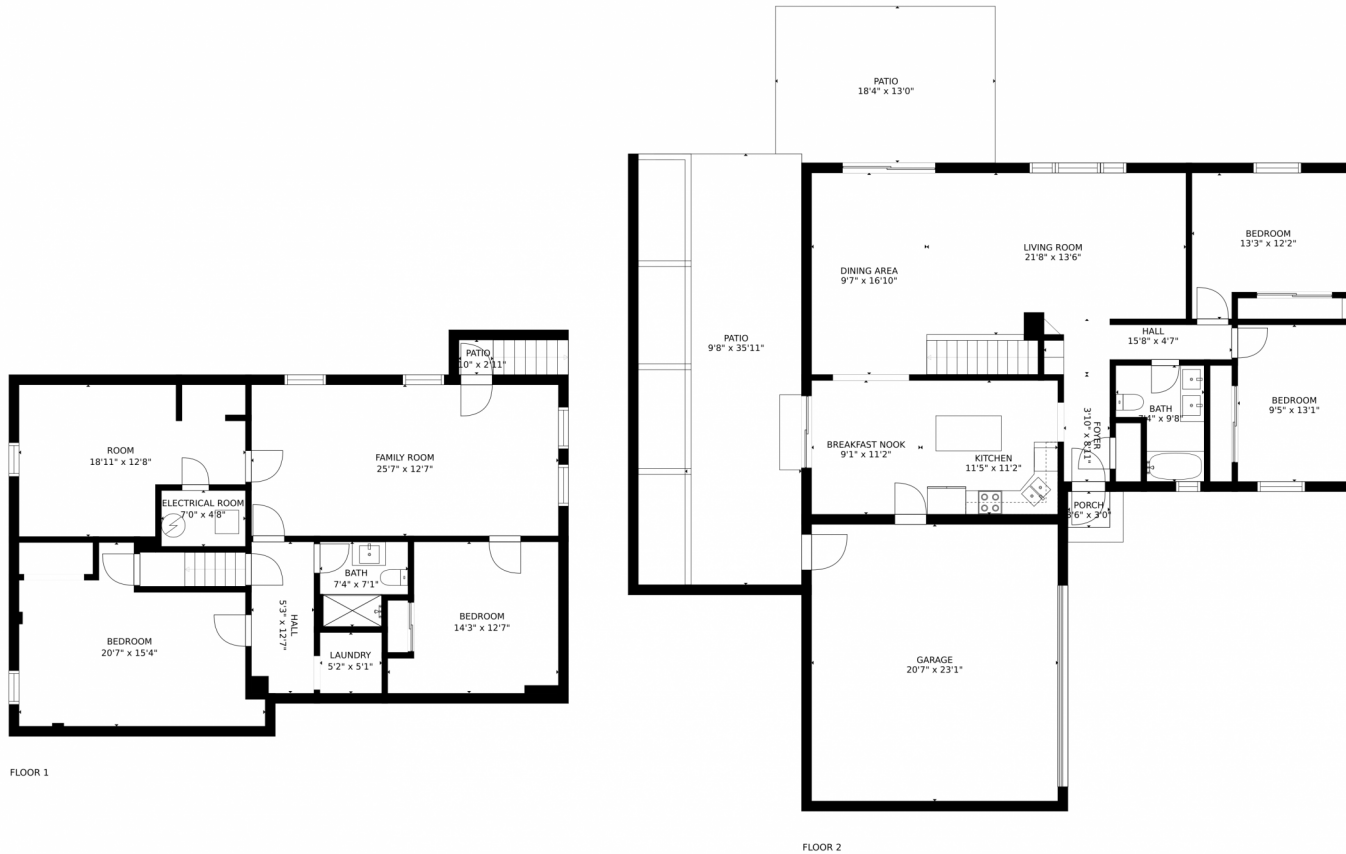
Disclaimer: Sizes and Dimensions are Approximate, Actual May Vary.



Nancy Henderson
832-279-9504
nancy@highridgerealty.co
<http://www.highridgerealty.co>



455 S Nelson Street, Lakewood, CO 80226 – All Levels



GROSS INTERNAL AREA
FLOOR 1: 1215 sq. ft, FLOOR 2: 1215 sq. ft
EXCLUDED AREAS: , PATIO: 754 sq. ft
GARAGE: 474 sq. ft, PORCH: 10 sq. ft
TOTAL: 2429 sq. ft

MEASUREMENTS CALCULATED BY V1Photos.com ARE DEEMED HIGHLY RELIABLE BUT NOT GUARANTEED.



Disclaimer: Sizes and Dimensions are Approximate, Actual May Vary.



Nancy Henderson
832-279-9504
nancy@highridgerealty.co
<http://www.highridgerealty.co>



Scan code
for more
property
details

