


 Single Family

 1402 SQFT

 3 Beds

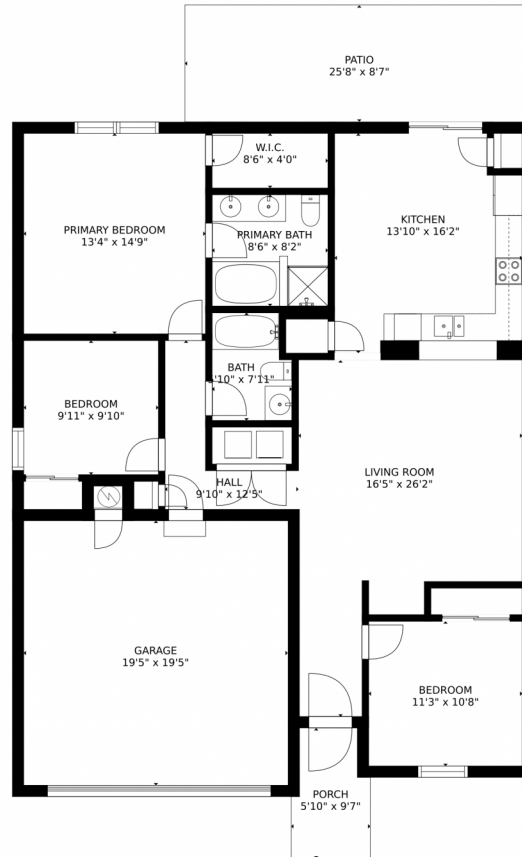
 2 Baths



Taylor Haas
303-665-7368
taylorh@coloradorpm.com
<https://www.coloradorpm.com/available-rental-properties-denver>



16244 E 54th Ave, Denver, CO 80239 – Main Level



GROSS INTERNAL AREA
FLOOR 1: 1297 sq. ft. EXCLUDED AREAS:
GARAGE: 378 sq. ft. PATIO: 221 sq. ft
PORCH: 49 sq. ft
TOTAL: 1297 sq. ft

MEASUREMENTS CALCULATED BY V1Photos.com ARE DEEMED HIGHLY RELIABLE BUT NOT GUARANTEED.



Disclaimer: Sizes and Dimensions are Approximate, Actual May Vary.



Taylor Haas
303-665-7368
taylorh@coloradorpm.com
<https://www.coloradorpm.com/available-rental-properties-denver>



Scan code
for more
property
details

