



Single Family



3114 SQFT



4 Beds



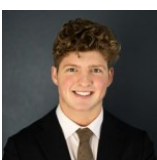
3/1 Baths



2 Car

PROPERTY DETAILS

Picture perfect home on corner lot in a cul-de-sac. Living room boasts large picture window with 2 story vaulted ceilings. Spacious kitchen with breakfast bar open to family room. Dining nook full of windows perfect for your morning coffee. Beautiful wood floors run through kitchen and family room seamlessly connecting the space. Main floor powder room and laundry finish off the main level. Luxurious large primary bedroom with stunning views and vaulted ceilings. Primary 5 piece bath with oversized closet. Loft area perfect for working at home or kids play area. Two additional bedrooms with a full bath in the hall complete the upper level. Finished basement ready for entertaining. Spacious game room with wet bar and surround sound speakers. Updated bathroom with gorgeous tile. 4th bedroom makes this space amazing for overnight guests. Great backyard with patio, garden area and sandbox. Fully fenced with a sprinkler system. This home has paid solar panels. Plus so many new upgrades! New furnace and AC -22, new upgraded electrical panel -22, new garage door -22, new windows (living room, primary bedroom, primary bath)-22, added attic insulation -22, radon mitigation system. Easy neighborhood access to nearby path and the Coal Creek Trail, Hwy 287 and US 36. Minutes from both old town Lafayette and Louisville shopping, dining and activities. Autumn Ridge is ideally situated and is 30 minutes to DIA and Denver and 20 minutes to Boulder.



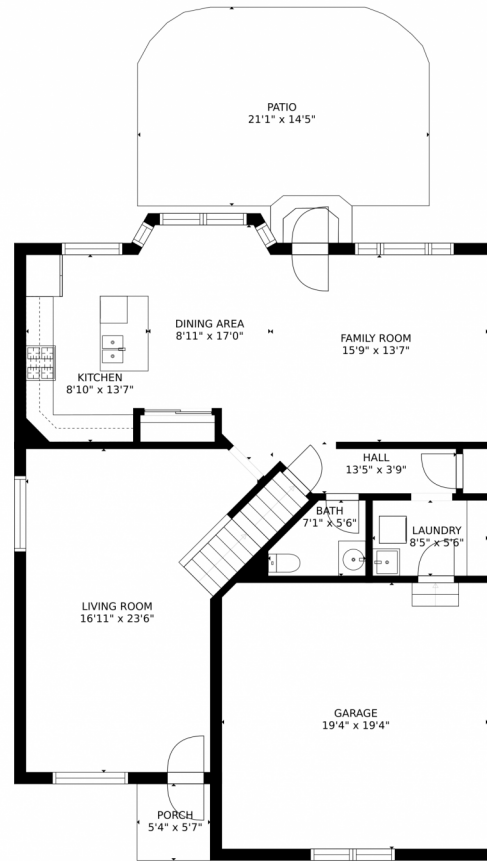
Connor Slump
303-349-5156
connor@luxfrontrange.com



Scan code
for more
property
details



375 aspenwood court, lafayette, CO 80026 – Main Level

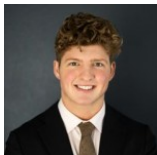


GROSS INTERNAL AREA
FLOOR 1: 878 sq. ft. FLOOR 2: 991 sq. ft.
FLOOR 3: 1062 sq. ft. EXCLUDED AREAS:
GARAGE: 372 sq. ft. PATIO: 308 sq. ft.
PORCH: 30 sq. ft.
TOTAL: 2931 sq. ft.

MEASUREMENTS CALCULATED BY V1Photos.COM ARE DEEMED HIGHLY RELIABLE BUT NOT GUARANTEED.



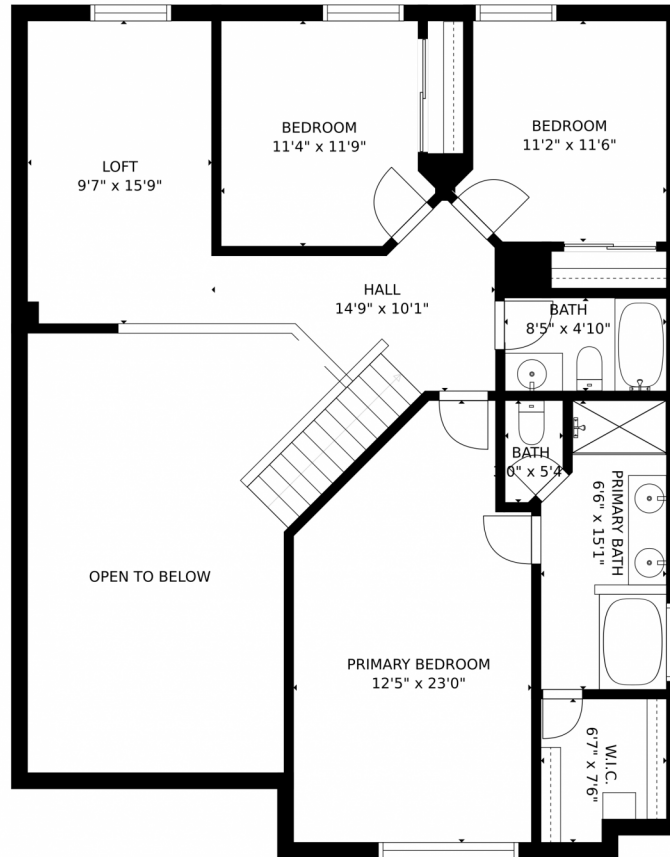
Disclaimer: Sizes and Dimensions are Approximate, Actual May Vary.



Connor Slump
303-349-5156
connor@luxfrontrange.com



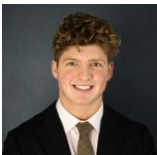
375 aspenwood court, lafayette, CO 80026 – Upper Level



GROSS INTERNAL AREA
FLOOR 1: 878 sq. ft. FLOOR 2: 991 sq. ft.
FLOOR 3: 1062 sq. ft. EXCLUDED AREAS:
GARAGE: 372 sq. ft. PATIO: 308 sq. ft.
PORCH: 30 sq. ft.
TOTAL: 2931 sq. ft.
MEASUREMENTS CALCULATED BY V1Photos.COM ARE DEEMED HIGHLY RELIABLE BUT NOT GUARANTEED.



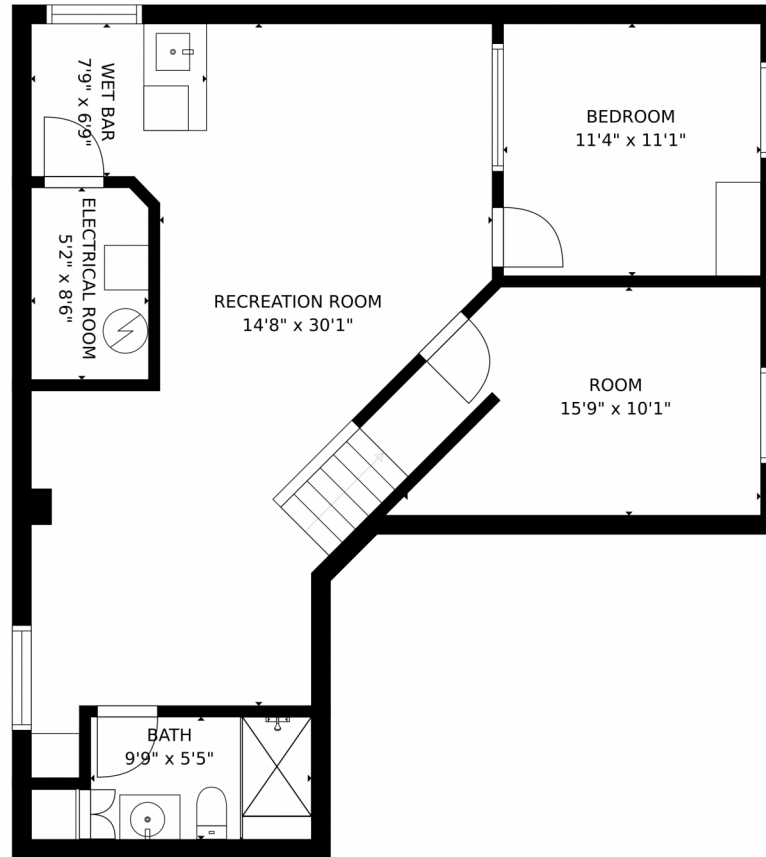
Disclaimer: Sizes and Dimensions are Approximate, Actual May Vary.



Connor Slump
303-349-5156
connor@luxfrontrange.com



375 aspenwood court, lafayette, CO 80026 – Lower Level

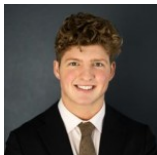


GROSS INTERNAL AREA
FLOOR 1: 878 sq. ft, FLOOR 2: 991 sq. ft
FLOOR 3: 1062 sq. ft, EXCLUDED AREAS:
GARAGE: 372 sq. ft, PATIO: 308 sq. ft
PORCH: 30 sq. ft
TOTAL: 2931 sq. ft

MEASUREMENTS CALCULATED BY V1Photos.com ARE DEEMED HIGHLY RELIABLE BUT NOT GUARANTEED.



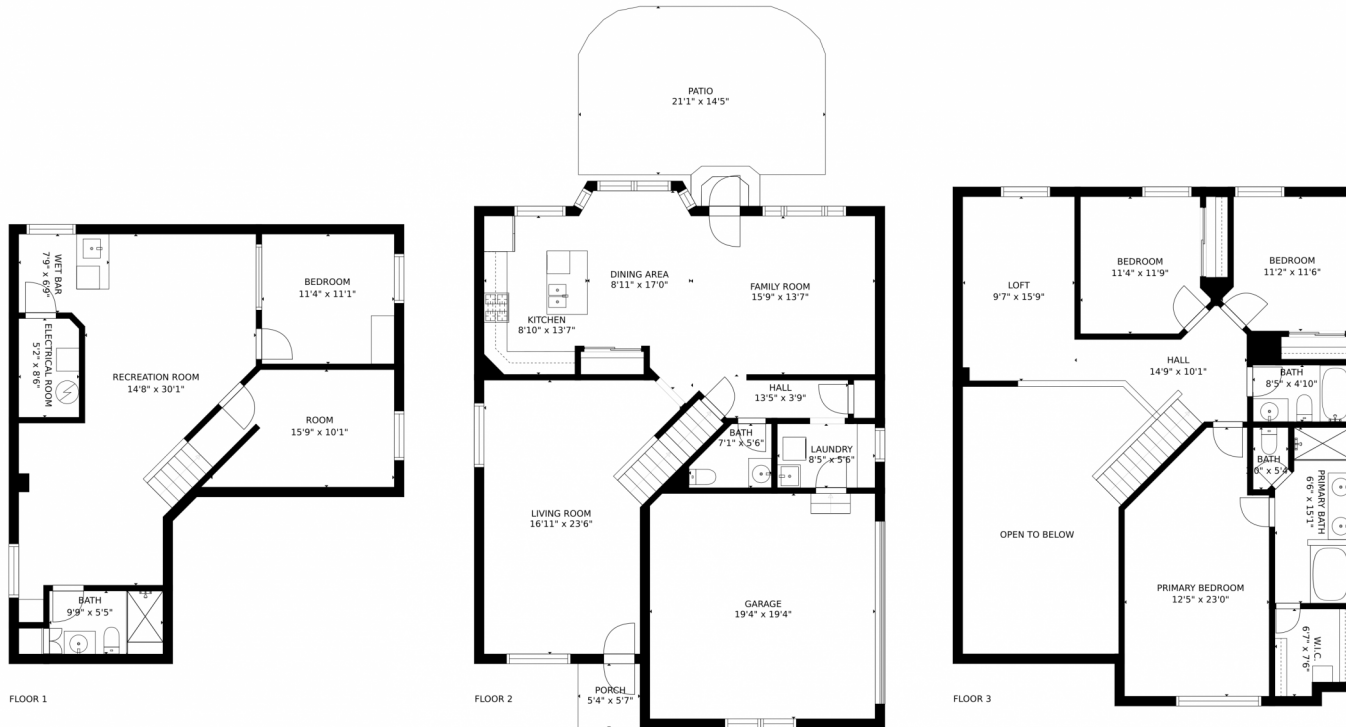
Disclaimer: Sizes and Dimensions are Approximate, Actual May Vary.



Connor Slump
303-349-5156
connor@luxfrontrange.com



375 aspenwood court, lafayette, CO 80026 – All Levels

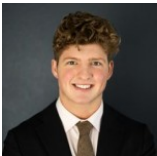


GROSS INTERNAL AREA
 FLOOR 1: 878 sq. ft. FLOOR 2: 991 sq. ft
 FLOOR 3: 1062 sq. ft. EXCLUDED AREAS:
 GARAGE: 372 sq. ft. PATIO: 308 sq. ft
 PORCH: 30 sq. ft
 TOTAL: 2931 sq. ft

MEASUREMENTS CALCULATED BY V1Photos.COM ARE DEEMED HIGHLY RELIABLE BUT NOT GUARANTEED.



Disclaimer: Sizes and Dimensions are Approximate, Actual May Vary.



Connor Slump
 303-349-5156
 connor@luxfrontrange.com



Scan code
 for more
 property
 details

