



1831 S Ensenada Street
 Aurora, CO 80017
 COMMUNITY: Lexington East

MLS # 8970638
 PRICE \$500,000



Single Family 1931 SQFT 5 Beds 2/1 Baths 2 Car 0.17 Acre

PROPERTY DETAILS

Welcome Home to Lexington East of Southeast Aurora! This sparkling tri-level home offers a whopping 5-bedroom layout with two full bathrooms plus two separate designated living areas making this floor plan ideal for your family and entertaining alike. Many honey-do's have already been honey-done making this Aurora beauty move in ready to the max; brand new paint, brand new carpet, most of the lighting throughout the home is also brand new! Many seller updates have also been completed in the last few years to include a new furnace and air conditioning, a home humidifier, remastery of the kitchen cabinetry, an updated upper level main bathroom, and last but not least a fully finished basement. The backyard and outdoor living space rival a resort style retreat showcasing an inground pool boasting a new liner along with stunning floral gardening and an immaculate gazebo style deck enclosure. You will love living in Lexington East with Side Creek Park just across the street from your new home offering tons of trail space for the jogging or biking enthusiast in your home along with public tennis courts and a playground. Walk to Side Creek Elementary in less that 15 minutes with Mrachek MS and Rangeview High just a five minute drive from home. Opt outside and live your best Colorado lifestyle with Cherry Creek Reservoir and State Park literally in the heart of Southeast Aurora and easily accessible from anywhere in the Denver area. The state park is anchored around an 880



Tatyana Sturm
 720-350-5909
 tatyana@exitrealtydtc.com
 https://thestorckteam.com



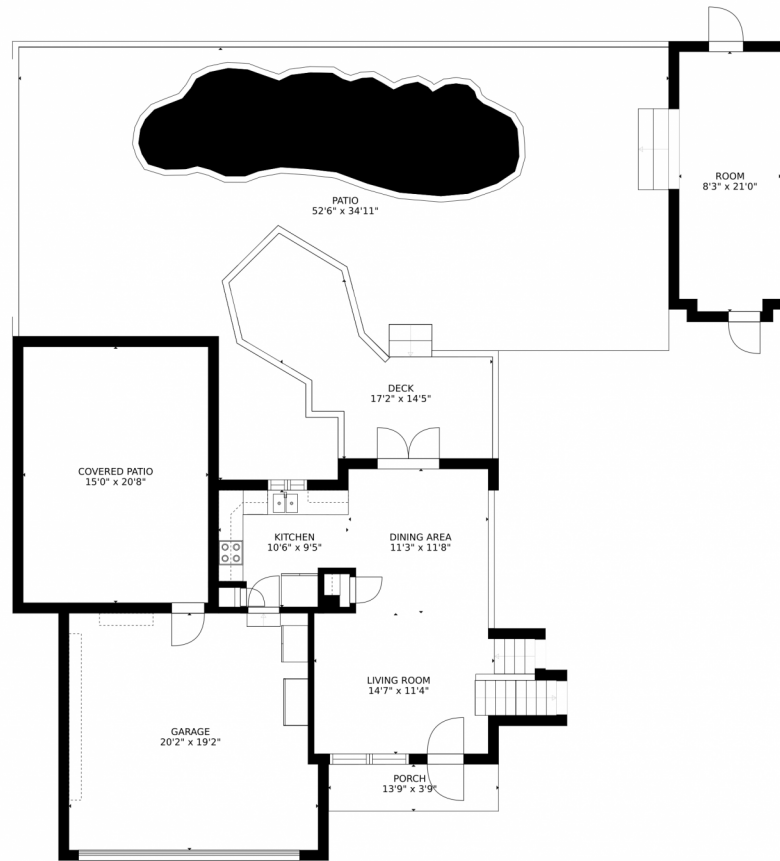
surface acre reservoir in the heart of the city offering everything from horseback riding to boating and fishing and even camping. Miles and miles of biking trails take you throughout the state park with enough endless trails to make an entire day of it, then enjoy a picnic around the reservoir and watch a magnificent sunset. Cherry Creek State Park is also home to a 107-acre off-leash dog park which includes a fully fenced area offering water access and walking trails.



Tatyana Sturm
720-350-5909
tatyana@exitrealtydtc.com
<https://thestorckteam.com>



1831 S Ensenada Street, Aurora, CO 80017 – Main Level



GROSS INTERNAL AREA
FLOOR 1: 348 sq. ft. FLOOR 2: 525 sq. ft.
FLOOR 3: 596 sq. ft. FLOOR 4: 573 sq. ft.
EXCLUDED AREAS: GARAGE: 376 sq. ft.
DECK: 190 sq. ft. PATIO: 1570 sq. ft.
PORCH: 52 sq. ft.
TOTAL: 2042 sq. ft.

MEASUREMENTS CALCULATED BY V1Photos.com ARE DEEMED HIGHLY RELIABLE BUT NOT GUARANTEED.



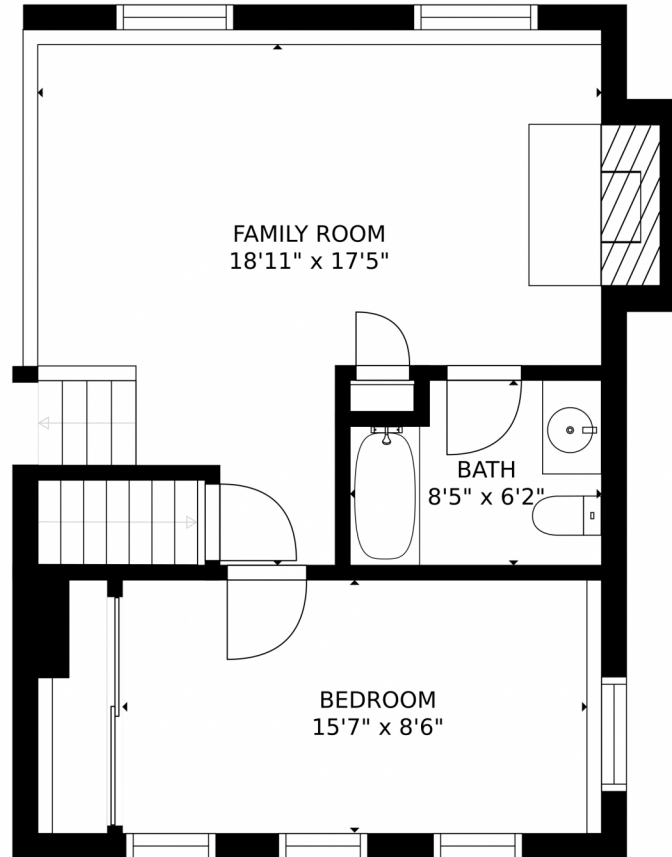
Disclaimer: Sizes and Dimensions are Approximate, Actual May Vary.



Tatyana Sturm
720-350-5909
tatyana@exitrealtydtc.com
<https://thestorckteam.com>



1831 S Ensenada Street, Aurora, CO 80017 – Lower Level



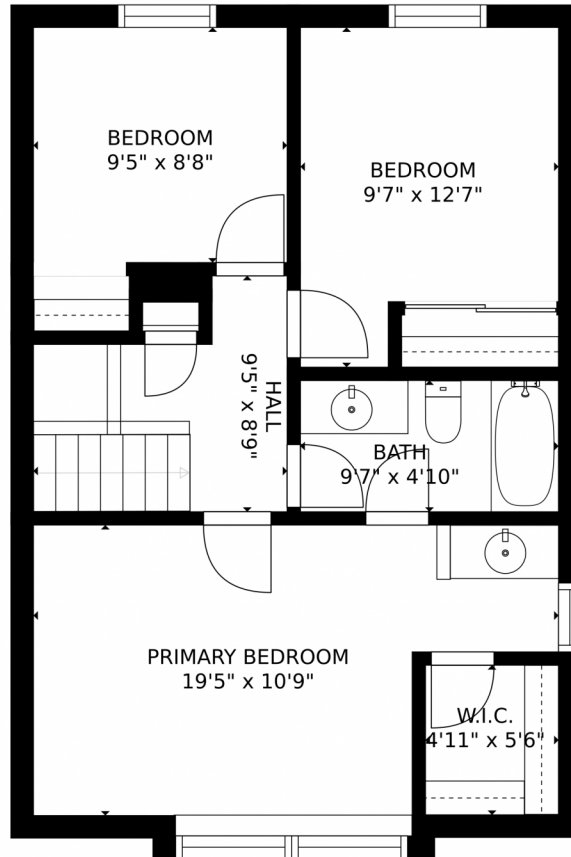
Disclaimer: Sizes and Dimensions are Approximate, Actual May Vary.



Tatyana Sturm
720-350-5909
tatyana@exitrealttydc.com
<https://thestorckteam.com>



1831 S Ensenada Street, Aurora, CO 80017 – Upper Level



GROSS INTERNAL AREA
FLOOR 1: 348 sq. ft. FLOOR 2: 525 sq. ft.
FLOOR 3: 596 sq. ft. FLOOR 4: 573 sq. ft.
EXCLUDED AREAS: , GARAGE: 376 sq. ft.
DECK: 190 sq. ft. PATIO: 1570 sq. ft.
PORCH: 52 sq. ft.
TOTAL: 2042 sq. ft.
MEASUREMENTS CALCULATED BY V1Photos.com ARE DEEMED HIGHLY RELIABLE BUT NOT GUARANTEED.




Disclaimer: Sizes and Dimensions are Approximate, Actual May Vary.

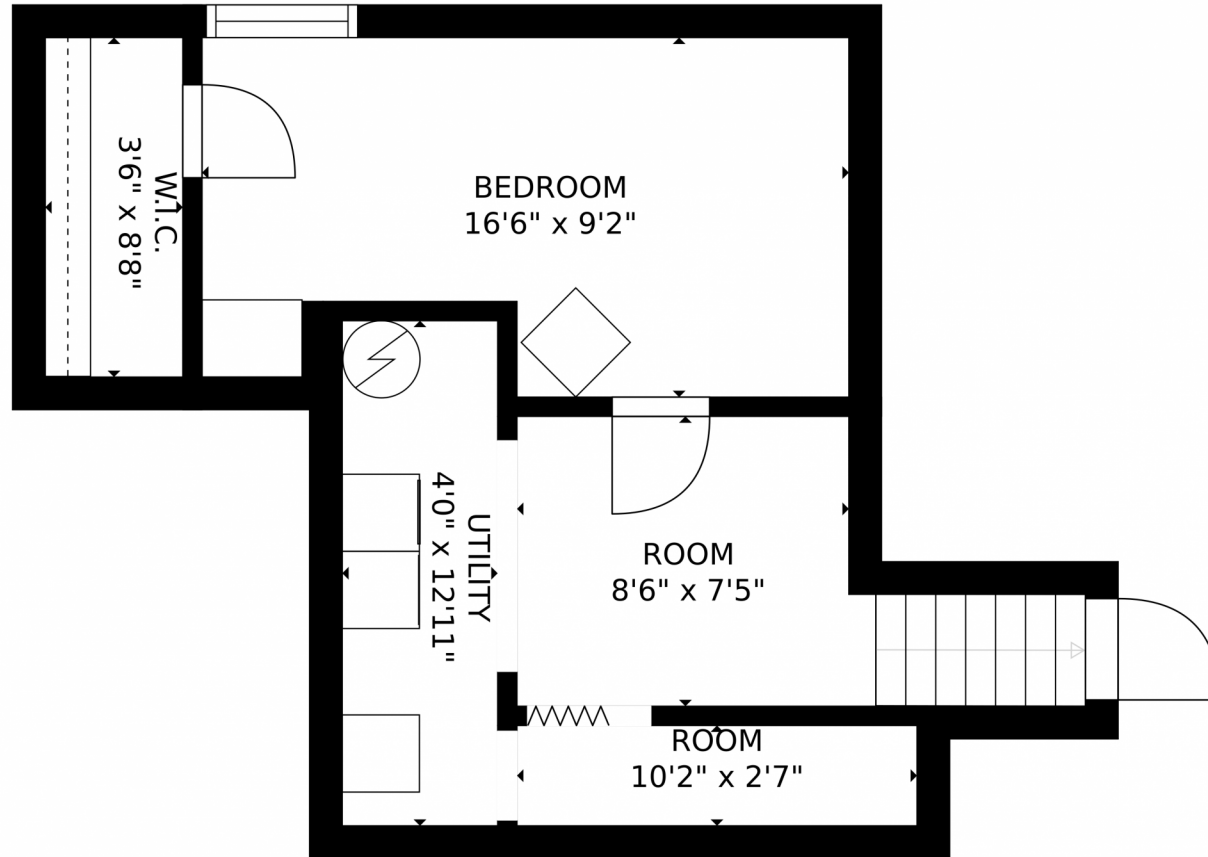


Tatyana Sturm
720-350-5909
tatyana@exitrealttydc.com
<https://thestorckteam.com>



Scan code for more property details





GROSS INTERNAL AREA
FLOOR 1: 348 sq. ft. FLOOR 2: 525 sq. ft.
FLOOR 3: 596 sq. ft. FLOOR 4: 573 sq. ft.
EXCLUDED AREAS: , GARAGE: 376 sq. ft.
DECK: 190 sq. ft. PATIO: 1570 sq. ft.
PORCH: 52 sq. ft.
TOTAL: 2042 sq. ft.

MEASUREMENTS CALCULATED BY V1Photos.COM ARE DEEMED HIGHLY RELIABLE BUT NOT GUARANTEED.

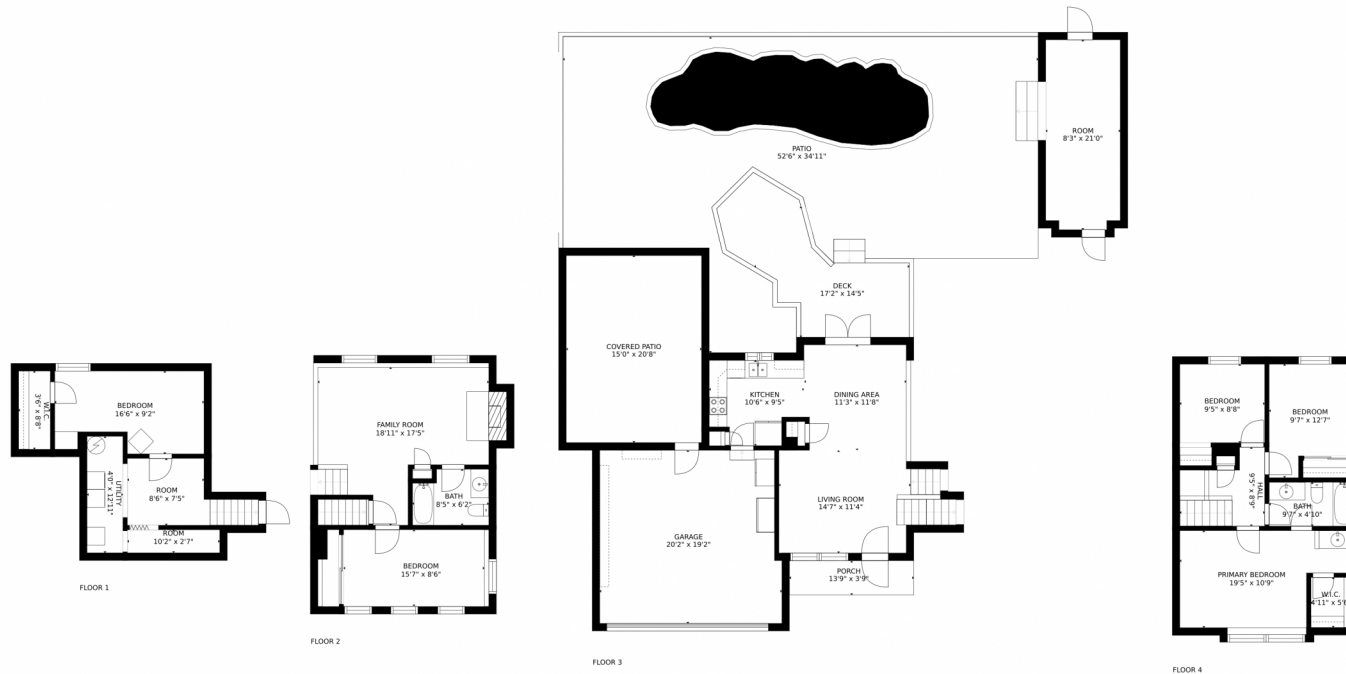
Disclaimer: Sizes and Dimensions are Approximate, Actual May Vary.



Tatyana Sturm
720-350-5909
tatyana@exitrealtydtc.com
<https://thestorckteam.com>



1831 S Ensenada Street, Aurora, CO 80017 – All Levels



GROSS INTERNAL AREA
FLOOR 1: 348 sq. ft. FLOOR 2: 525 sq. ft.
FLOOR 3: 596 sq. ft. FLOOR 4: 573 sq. ft.
EXCLUDED AREAS: GARAGE: 376 sq. ft.
DECK: 190 sq. ft. PATIO: 1570 sq. ft.
PORCH: 52 sq. ft.
TOTAL: 2042 sq. ft.

MEASUREMENTS CALCULATED BY V1Photos.com ARE DEEMED HIGHLY RELIABLE BUT NOT GUARANTEED.



Disclaimer: Sizes and Dimensions are Approximate, Actual May Vary.



Tatyana Sturm
720-350-5909
tatyana@exitrealttydtc.com
<https://thestorckteam.com>



Scan code
for more
property
details

