



6648 Hillside Way  
 Parker, CO 80134  
 COMMUNITY: The Pinery

MLS # 5892769  
 PRICE \$900,000



Single Family   3656 SQFT   4 Beds   3 Baths   2 Car   0.49 Acre

## PROPERTY DETAILS

Welcome home to the coveted and highly desirable community The Pinery of Parker, CO! Everything in this ranch style beauty is new, new, new from head to toe and at every turn. Immediately upon entering you are taken away with brilliant brand new interior paint along with gorgeous and rich flooring that carries you throughout the main living areas of the main level into the glorious owner's suite. Just off of the home's entryway is a completely remastered home office space further leading into the stunning and spacious living room area beautifully anchored by a stately and traditional brick lain wood burning fireplace. Next up is the kitchen and this one will knock your socks off showcasing all new cabinetry and appliances with brand new Quartz countertops and all new stainless steel appliances. The formal dining space is adorned with stunning new lighting offering plenty of space for any dining suite imaginable. Three generously sized bedrooms to include the owner's suite finish out the main level of the home. But wait, there's more... the basement is also fully finished complete with an expansive family room space which is ready for your next game or movie night with family and friends along with a fourth non-conforming bedroom and yet another bathroom. Quietly nestled atop nearly a half acre lot looking out further into community open spaces. You will love living in The Pinery where residents can enjoy a multitude of open spaces, parks, and even a fishing lake which is private



**Tatyana Sturm**  
 720-350-5909  
 tatyana@exitrealtydtc.com  
 https://thestorckteam.com



to Pinery residents. Miles and miles of trails intertwine you throughout your new community. The Pinery Country Club offers a robust tennis and golf club along with a lovely dining hall and community pool and fitness center with everything from Pilates to Golf Fitness to Total Body Conditioning. Residents of The Pinery enjoy the award winning education system of Douglas County Schools to include Ponderosa High School.



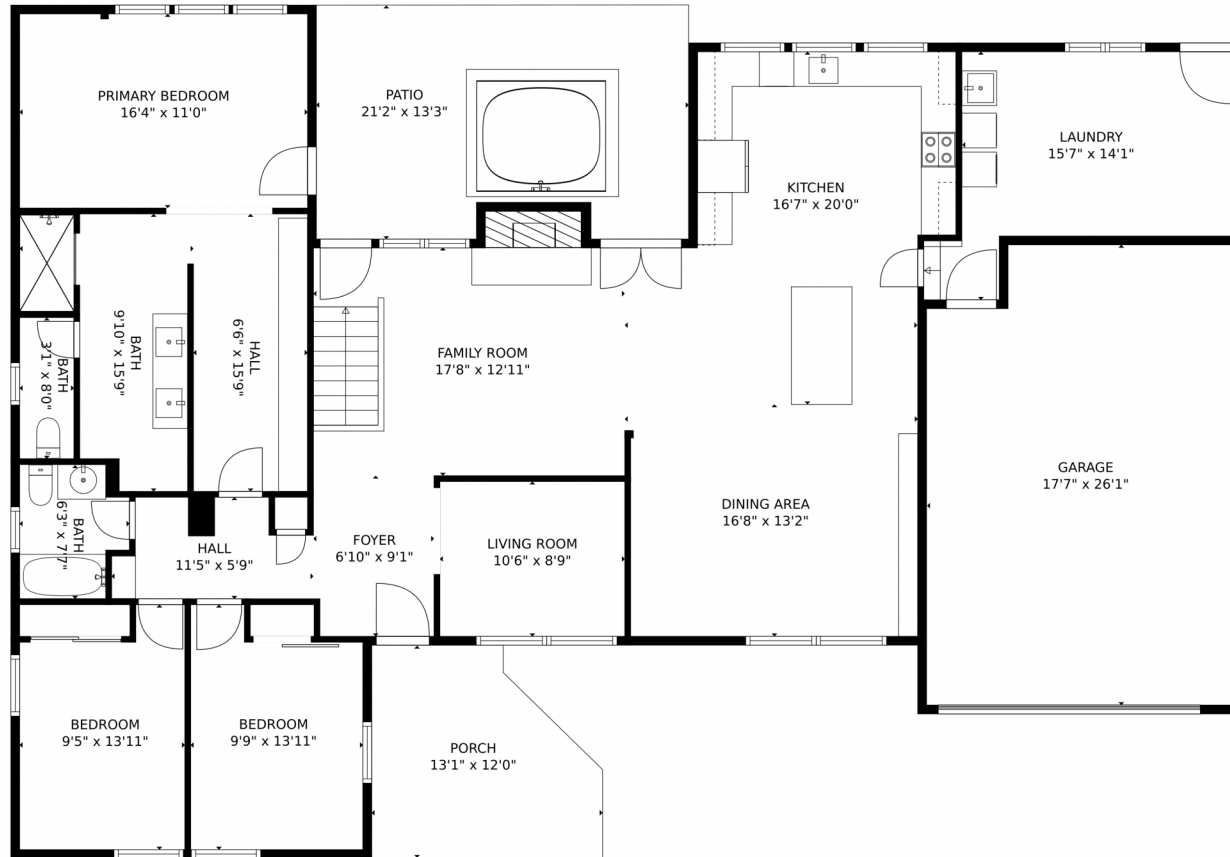
**Tatyana Sturm**  
720-350-5909  
tatyana@exitrealtydtc.com  
<https://thestorckteam.com>



Scan code  
for more  
property  
details



# 6648 Hillside Way, Parker, CO 80134 – Main Level



GROSS INTERNAL AREA  
Below Ground: 1272 sq. ft. FLOOR 2: 1895 sq. ft.  
EXCLUDED AREAS: ELECTRICAL ROOM: 77 sq. ft. FIREPLACE: 14 sq. ft. GARAGE: 443 sq. ft.  
PORCH: 134 sq. ft. LOW CEILING: 267 sq. ft.  
TOTAL: 3167 sq. ft.  
MEASUREMENTS CALCULATED BY V1Photos.COM ARE DEEMED HIGHLY RELIABLE BUT NOT GUARANTEED.



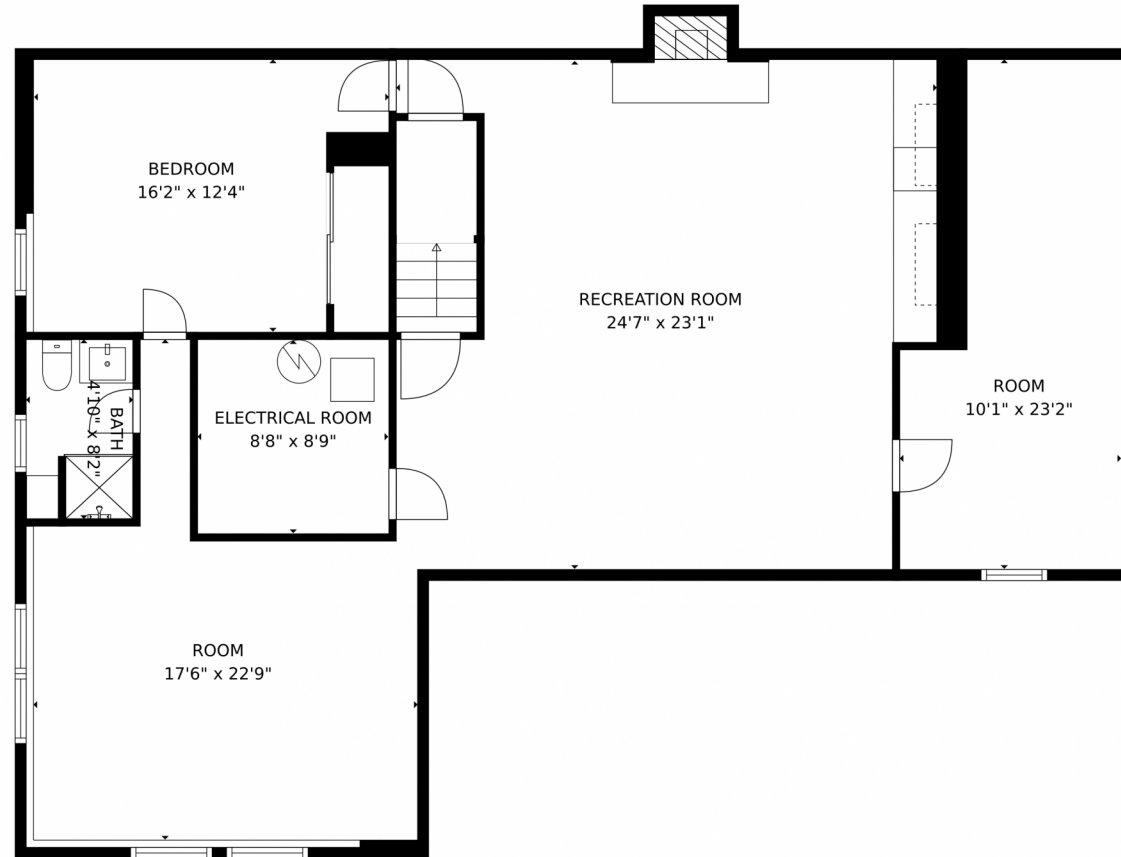
Disclaimer: Sizes and Dimensions are Approximate, Actual May Vary.



**Tatyana Sturm**  
720-350-5909  
tatyana@exitrealttydc.com  
<https://thestorckteam.com>



6648 Hillside Way, Parker, CO 80134 – Lower Level



GROSS INTERNAL AREA  
Below Ground: 1272 sq. ft. FLOOR 2: 1895 sq. ft.  
EXCLUDED AREAS: ELECTRICAL ROOM: 77 sq. ft. FIREPLACE: 14 sq. ft. GARAGE: 443 sq. ft.  
PORCH: 134 sq. ft. LOW CEILING: 267 sq. ft.  
TOTAL: 3167 sq. ft.  
MEASUREMENTS CALCULATED BY V1Photos.com ARE DEEMED HIGHLY RELIABLE BUT NOT GUARANTEED.



Disclaimer: Sizes and Dimensions are Approximate, Actual May Vary.

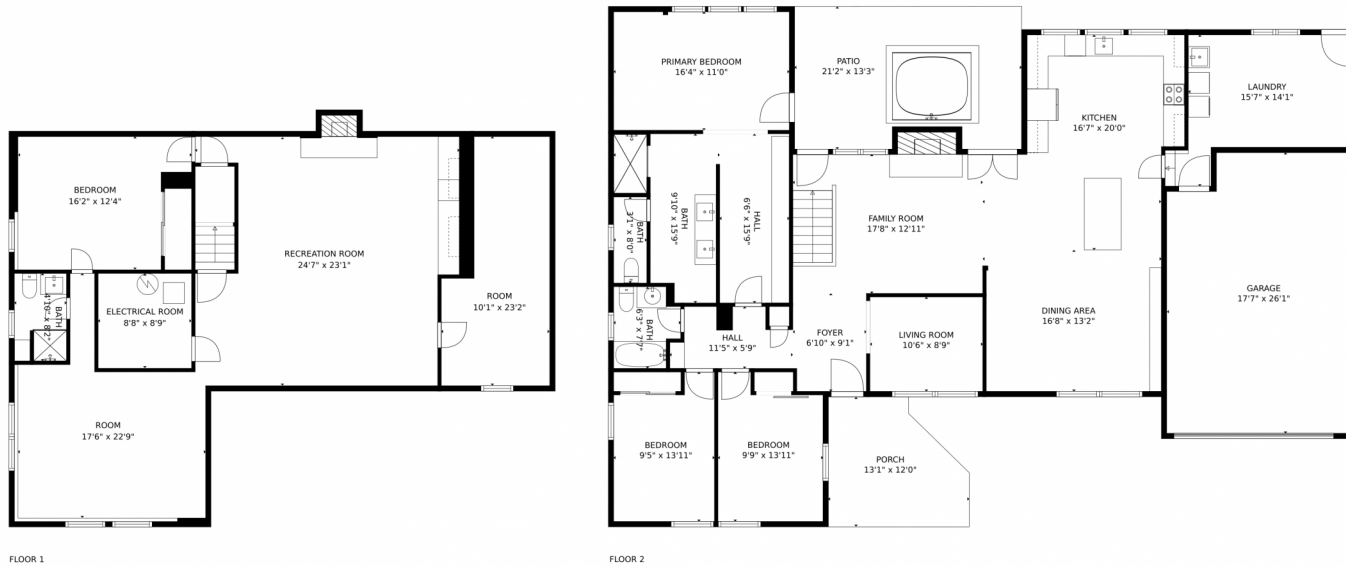


**Tatyana Sturm**  
720-350-5909  
tatyana@exitrealtydtc.com  
<https://thestorckteam.com>





# 6648 Hillside Way, Parker, CO 80134 – Upper Level



GROSS INTERNAL AREA  
Below Ground: 1272 sq. ft, FLOOR 2: 1895 sq. ft  
EXCLUDED AREAS: ELECTRICAL ROOM: 77 sq. ft, FIREPLACE: 14 sq. ft, GARAGE: 443 sq. ft,  
PORCH: 134 sq. ft, LOW CEILING: 267 sq. ft  
TOTAL: 3167 sq. ft  
MEASUREMENTS CALCULATED BY V1Photos.COM ARE DEEMED HIGHLY RELIABLE BUT NOT GUARANTEED.



Disclaimer: Sizes and Dimensions are Approximate, Actual May Vary.



**Tatyana Sturm**  
720-350-5909  
tatyana@exitrealtydtc.com  
<https://thestorckteam.com>

