



24977 Foothills Drive North  
Golden, CO 80401

PRICE \$1,500,000



Single Family



5928 SQFT



4 Beds



2/2 Baths



3 Car



0.5 Acre



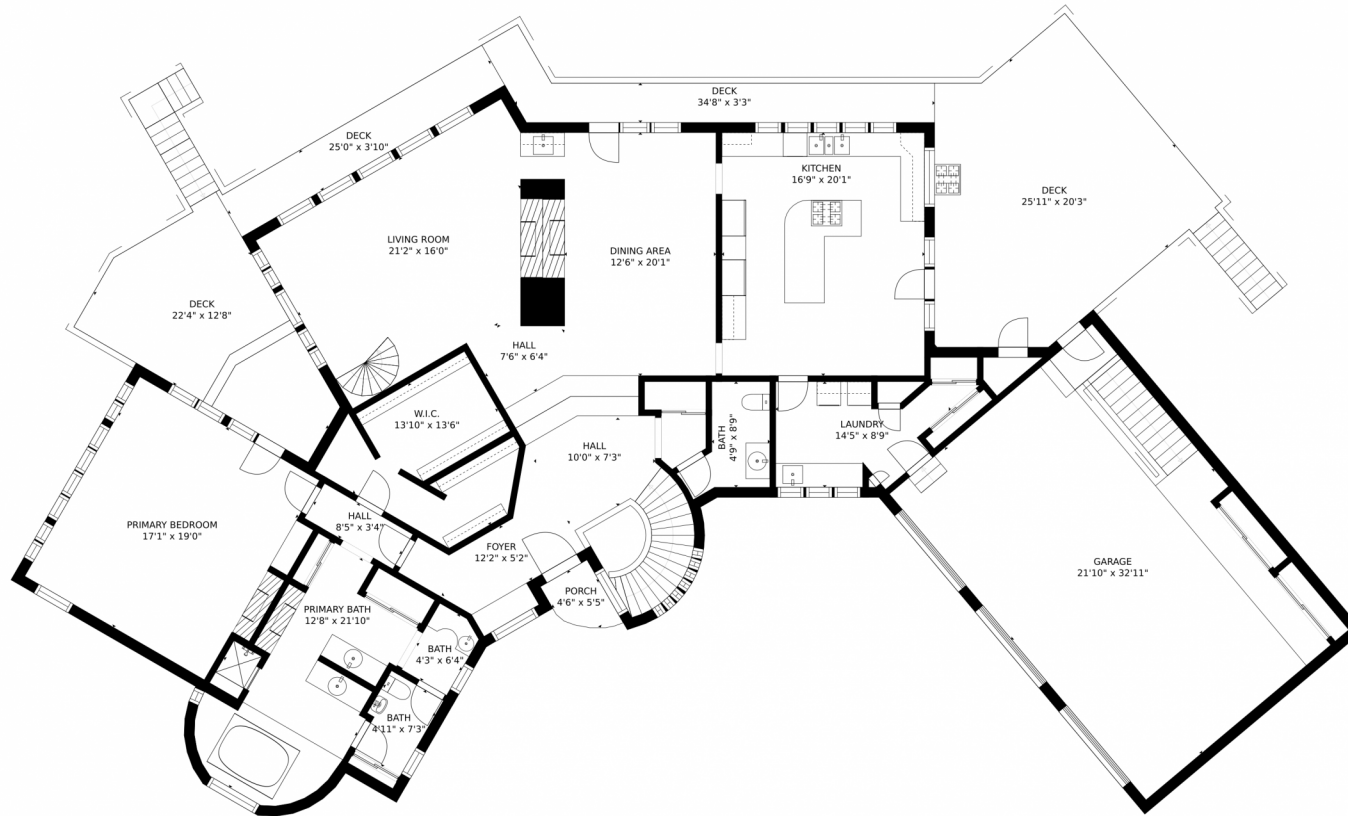
**Julie Leins**  
720-474-0928  
julieleins@kw.com  
<https://coloradohomesdreamteam.com>



Scan code  
for more  
property  
details



# 24977 Foothills Drive North, Golden, CO 80401 – Main Level



GROSS INTERNAL AREA  
FLOOR 1: 1862 sq. ft, FLOOR 2: 2442 sq. ft  
FLOOR 3: 250 sq. ft, EXCLUDED AREAS:  
UNFINISHED BASEMENT: 143 sq. ft, DECK: 1439 sq. ft  
GARAGE: 690 sq. ft, PORCH: 22 sq. ft  
TOTAL: 4554 sq. ft  
MEASUREMENTS CALCULATED BY V1Photos.COM ARE DEEMED HIGHLY RELIABLE BUT NOT GUARANTEED.



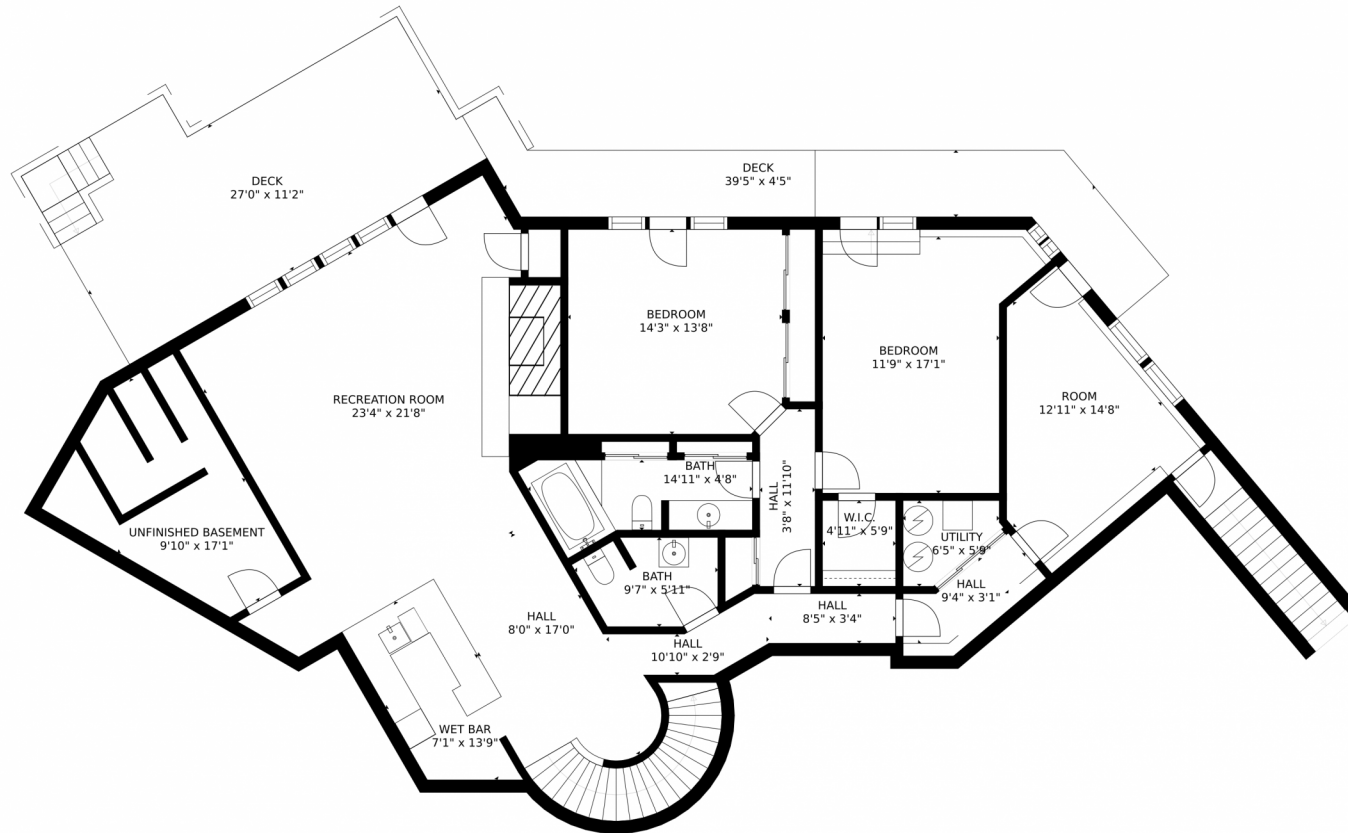
Disclaimer: Sizes and Dimensions are Approximate, Actual May Vary.



**Julie Leins**  
720-474-0928  
julieleins@kw.com  
<https://coloradohomesdreamteam.com>



# 24977 Foothills Drive North, Golden, CO 80401 – Lower Level



GROSS INTERNAL AREA  
FLOOR 1: 1862 sq. ft. FLOOR 2: 2442 sq. ft.  
FLOOR 3: 250 sq. ft. EXCLUDED AREAS:  
UNFINISHED BASEMENT: 143 sq. ft. DECK: 1439 sq. ft.  
GARAGE: 690 sq. ft. PORCH: 22 sq. ft.  
TOTAL: 4554 sq. ft.

MEASUREMENTS CALCULATED BY V1Photos.COM ARE DEEMED HIGHLY RELIABLE BUT NOT GUARANTEED.



Disclaimer: Sizes and Dimensions are Approximate, Actual May Vary.

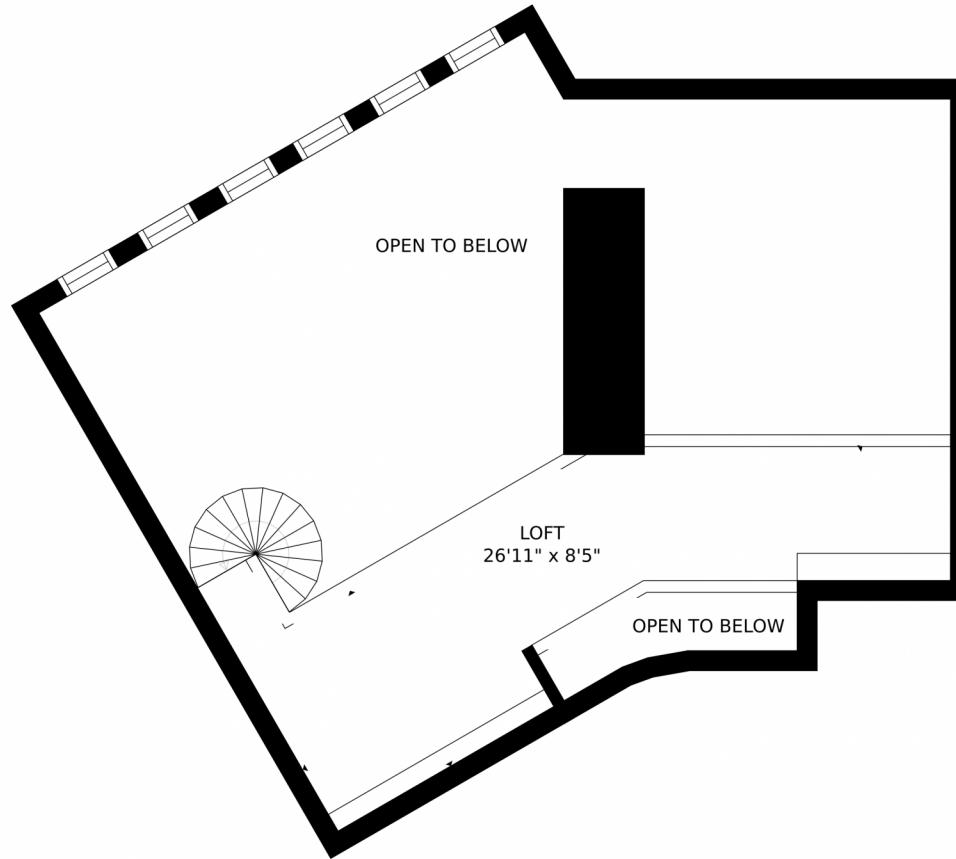


**Julie Leins**  
720-474-0928  
julieleins@kw.com  
<https://coloradohomesdreamteam.com>



Scan code  
for more  
property  
details





GROSS INTERNAL AREA  
FLOOR 1: 1862 sq. ft. FLOOR 2: 2442 sq. ft.  
FLOOR 3: 250 sq. ft. EXCLUDED AREAS:  
UNFINISHED BASEMENT: 143 sq. ft. DECK: 1439 sq. ft.  
GARAGE: 690 sq. ft. PORCH: 22 sq. ft.  
TOTAL: 4554 sq. ft.

MEASUREMENTS CALCULATED BY V1Photos.COM ARE DEEMED HIGHLY RELIABLE BUT NOT GUARANTEED.



Disclaimer: Sizes and Dimensions are Approximate, Actual May Vary.



**Julie Leins**

720-474-0928

julieleins@kw.com

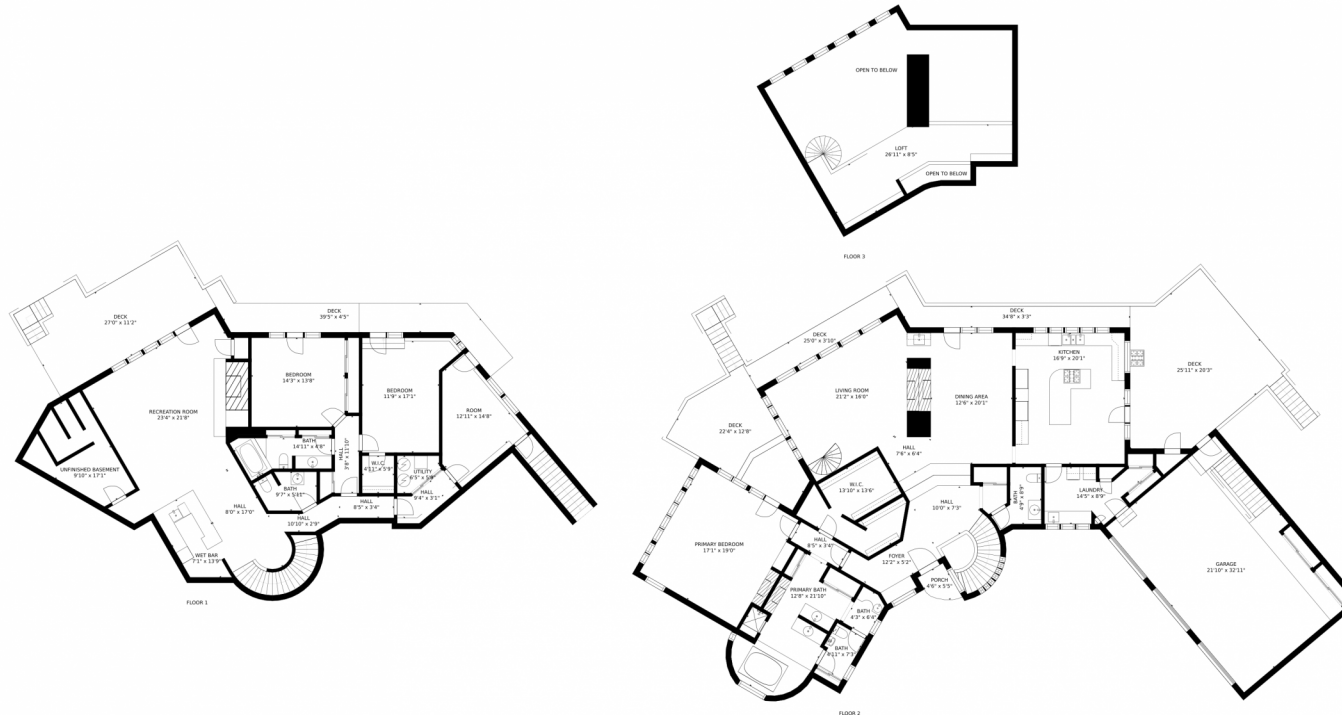
<https://coloradohomesdreamteam.com>



Scan code  
for more  
property  
details



# 24977 Foothills Drive North, Golden, CO 80401 — All Levels



GROSS INTERNAL AREA  
FLOOR 1: 1862 sq. ft. FLOOR 2: 2442 sq. ft.  
FLOOR 3: 250 sq. ft. EXCLUDED AREAS:  
UNFINISHED BASEMENT: 143 sq. ft. DECK: 1439 sq. ft.  
GARAGE: 690 sq. ft. PORCH: 22 sq. ft.  
TOTAL: 4554 sq. ft.

MEASUREMENTS CALCULATED BY V1Photos.COM ARE DEEMED HIGHLY RELIABLE BUT NOT GUARANTEED.



Disclaimer: Sizes and Dimensions are Approximate, Actual May Vary.



**Julie Leins**  
720-474-0928  
julieleins@kw.com  
<https://coloradohomesdreamteam.com>

