




 Single Family

 1498 SQFT

 4 Beds

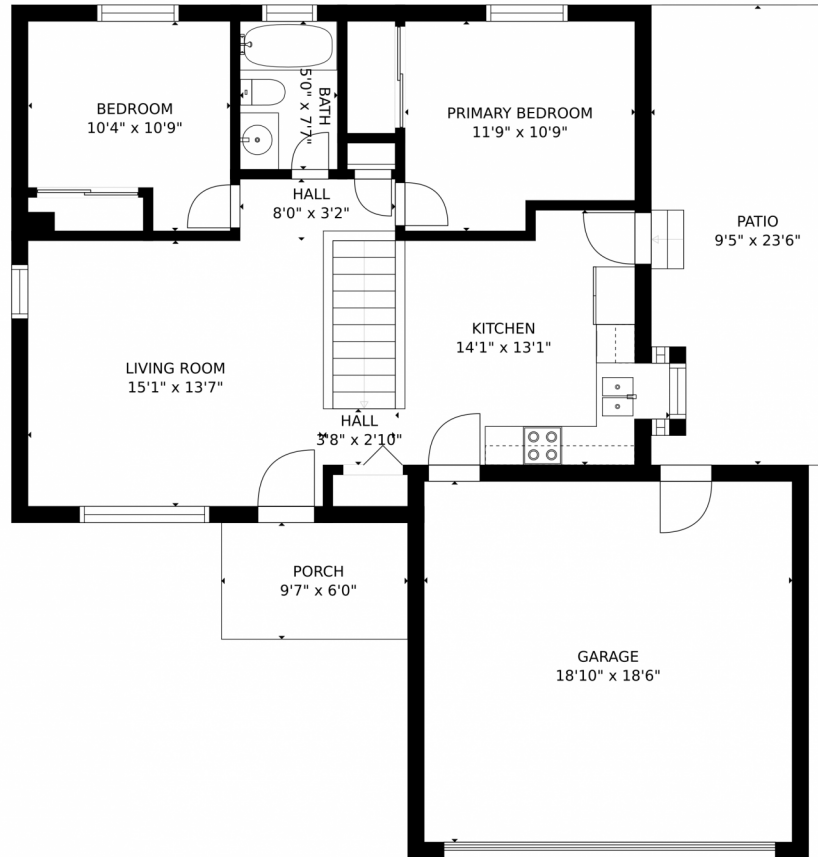
 2 Baths



Taylor Haas
303-665-7368
taylorh@coloradorpm.com
<https://www.coloradorpm.com/available-rental-properties-denver>



8518 Willows Place, Parker, CO 80134 – Main Level



GROSS INTERNAL AREA
FLOOR 1: 651 sq. ft., FLOOR 2: 754 sq. ft.
EXCLUDED AREAS: , GARAGE: 349 sq. ft.
PATIO: 213 sq. ft., PORCH: 57 sq. ft.
TOTAL: 1405 sq. ft.
MEASUREMENTS CALCULATED BY V1Photos.com ARE DEEMED HIGHLY RELIABLE BUT NOT GUARANTEED.



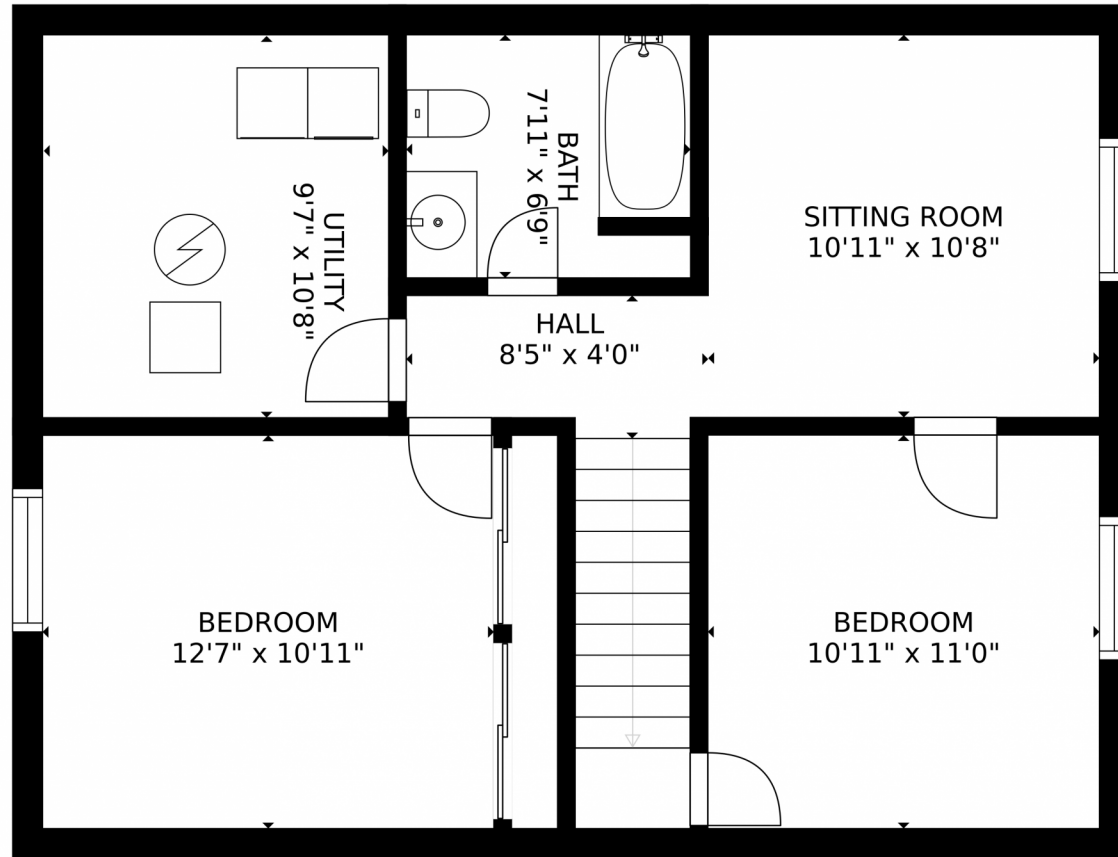
Disclaimer: Sizes and Dimensions are Approximate, Actual May Vary.



Taylor Haas
303-665-7368
taylorh@coloradorpm.com
<https://www.coloradorpm.com/available-rental-properties-denver>



8518 Willows Place, Parker, CO 80134 – Basement



GROSS INTERNAL AREA
FLOOR 1: 651 sq. ft, FLOOR 2: 754 sq. ft
EXCLUDED AREAS: , GARAGE: 349 sq. ft
PATIO: 213 sq. ft, PORCH: 57 sq. ft
TOTAL: 1405 sq. ft
MEASUREMENTS CALCULATED BY V1Photos.com ARE DEEMED HIGHLY RELIABLE BUT NOT GUARANTEED.



Disclaimer: Sizes and Dimensions are Approximate, Actual May Vary.



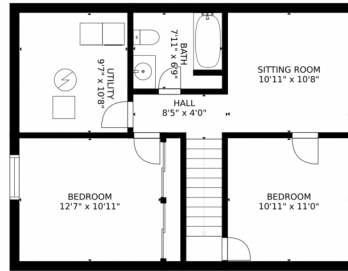
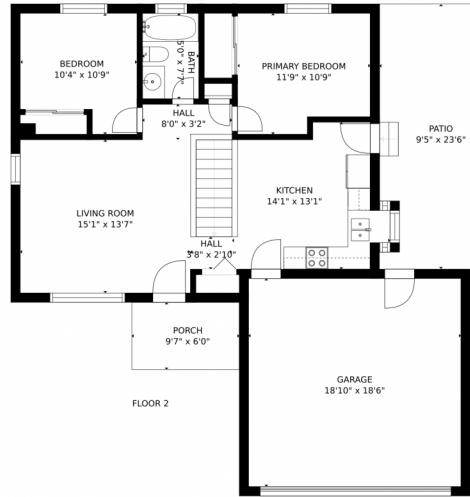
Taylor Haas
303-665-7368
taylorh@coloradorpm.com
<https://www.coloradorpm.com/available-rental-properties-denver>



Scan code
for more
property
details



8518 Willows Place, Parker, CO 80134 – All Levels



GROSS INTERNAL AREA
FLOOR 1: 651 sq. ft., FLOOR 2: 754 sq. ft.
EXCLUDED AREAS: , GARAGE: 349 sq. ft.
PATIO: 213 sq. ft., PORCH: 57 sq. ft.
TOTAL: 1405 sq. ft.
MEASUREMENTS CALCULATED BY V1Photos.com ARE DEEMED HIGHLY RELIABLE BUT NOT GUARANTEED.



Disclaimer: Sizes and Dimensions are Approximate, Actual May Vary.



Taylor Haas
303-665-7368
taylorh@coloradorpm.com
<https://www.coloradorpm.com/available-rental-properties-denver>

