

2889 West Long Circle  
Littleton, CO 80120  
COMMUNITY: SOUTHPARK

MLS # 4821493  
PRICE \$495,000



Townhouse



1864 SQFT



2 Beds



2/1 Baths



2 Car



0.03 Acre

## PROPERTY DETAILS

This gorgeous two-bedroom, three-bathroom townhome features a spacious primary suite with three closets plus a private retreat (the retreat was previously a bedroom and can easily be converted back into a third upstairs bedroom). The bright, open-concept living area has vaulted ceilings and a cozy fireplace. The kitchen features a newer garbage disposal, stainless-steel appliances, and an eat-in kitchen with beautiful mountain views. This townhome was impeccably maintained and updated by the previous owner who made recent updates to the kitchen, all three bathrooms, partially finished the basement (2021), added a new patio fence, newer windows throughout, some new interior paint, exterior paint (2022)/gutters (2021) and added brand new vinyl floors on the main floor in December of 2022. This end unit also includes a two-car garage. Southpark features "resort-like" living with a community swimming pool, clubhouse, and tennis courts. One of the best locations in the Denver Metro area, close to Aspen Grove shopping center, grocery stores, restaurants, breweries, Historic Main Street Littleton, hiking/biking trails along the Platte River System, Writers Vista Park, the Highline Canal and the RTD Light Rail less than 10-min walk. You can't miss this light-filled residence perfectly positioned within the sought-after Southpark 2 community.



**Christie Lysaught**

303-913-7539

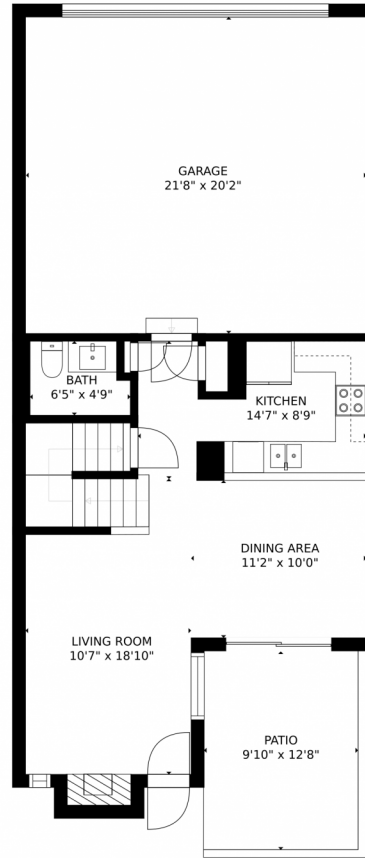
[clysaught@livosir.com](mailto:clysaught@livosir.com)

<https://www.christielysaught.com/>

Scan code  
for more  
property  
details



# 2889 West Long Circle, Littleton, CO 80120 – 1st Floor



GROSS INTERNAL AREA  
FLOOR 1: 12 sq. ft., FLOOR 2: 510 sq. ft.  
FLOOR 3: 781 sq. ft., EXCLUDED AREAS:  
UNFINISHED BASEMENT: 465 sq. ft., GARAGE: 438 sq. ft.  
PATIO: 124 sq. ft.  
TOTAL: 1302 sq. ft.

MEASUREMENTS CALCULATED BY V1Photos.COM ARE DEEMED HIGHLY RELIABLE BUT NOT GUARANTEED.



Disclaimer: Sizes and Dimensions are Approximate, Actual May Vary.



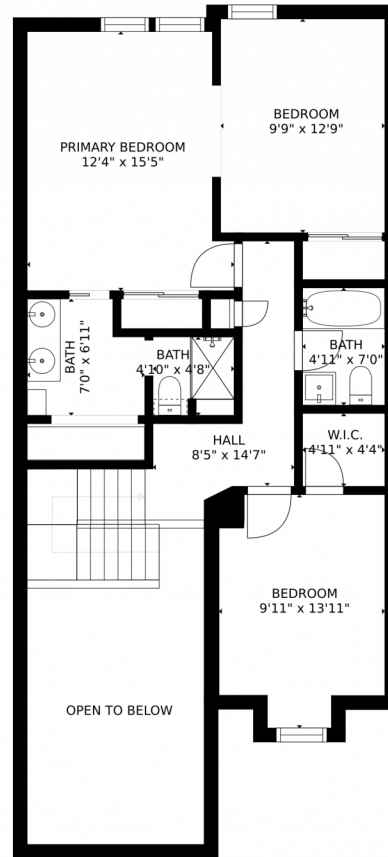
**Christie Lysaught**  
303-913-7539  
clysought@livosir.com  
<https://www.christielysaught.com/>



Scan code  
for more  
property  
details



2889 West Long Circle, Littleton, CO 80120 – 2nd Floor



GROSS INTERNAL AREA  
FLOOR 1: 12 sq. ft, FLOOR 2: 510 sq. ft  
FLOOR 3: 781 sq. ft, EXCLUDED AREAS:  
UNFINISHED BASEMENT: 465 sq. ft, GARAGE: 438 sq. ft  
PATIO: 124 sq. ft  
TOTAL: 1302 sq. ft  
MEASUREMENTS CALCULATED BY V1Photos.COM ARE DEEMED HIGHLY RELIABLE BUT NOT GUARANTEED.



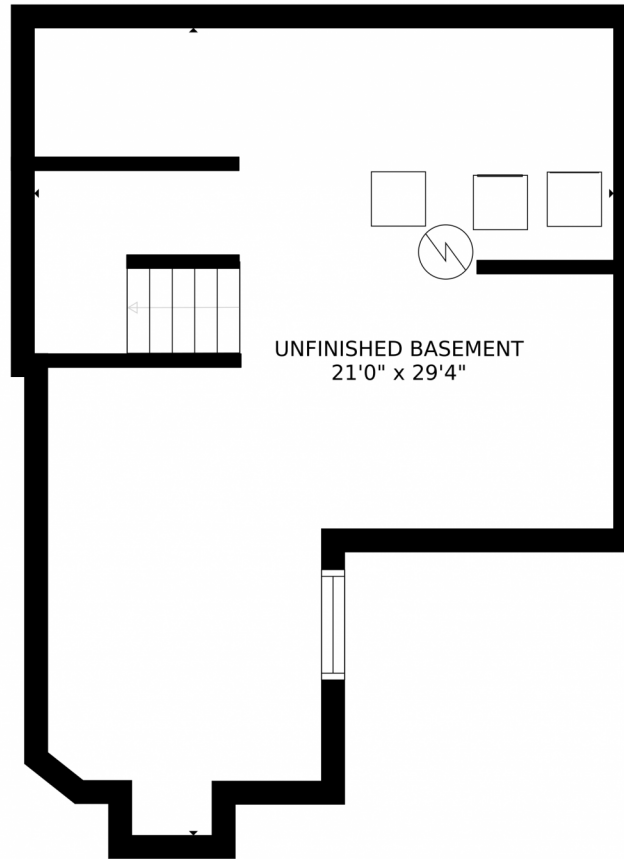
Disclaimer: Sizes and Dimensions are Approximate, Actual May Vary.



**Christie Lysaught**  
303-913-7539  
clysought@livosir.com  
<https://www.christielysaught.com/>







GROSS INTERNAL AREA  
FLOOR 1: 12 sq. ft, FLOOR 2: 510 sq. ft  
FLOOR 3: 781 sq. ft, EXCLUDED AREAS:  
UNFINISHED BASEMENT: 465 sq. ft, GARAGE: 438 sq. ft  
PATIO: 124 sq. ft  
TOTAL: 1302 sq. ft

MEASUREMENTS CALCULATED BY V1Photos.com ARE DEEMED HIGHLY RELIABLE BUT NOT GUARANTEED.



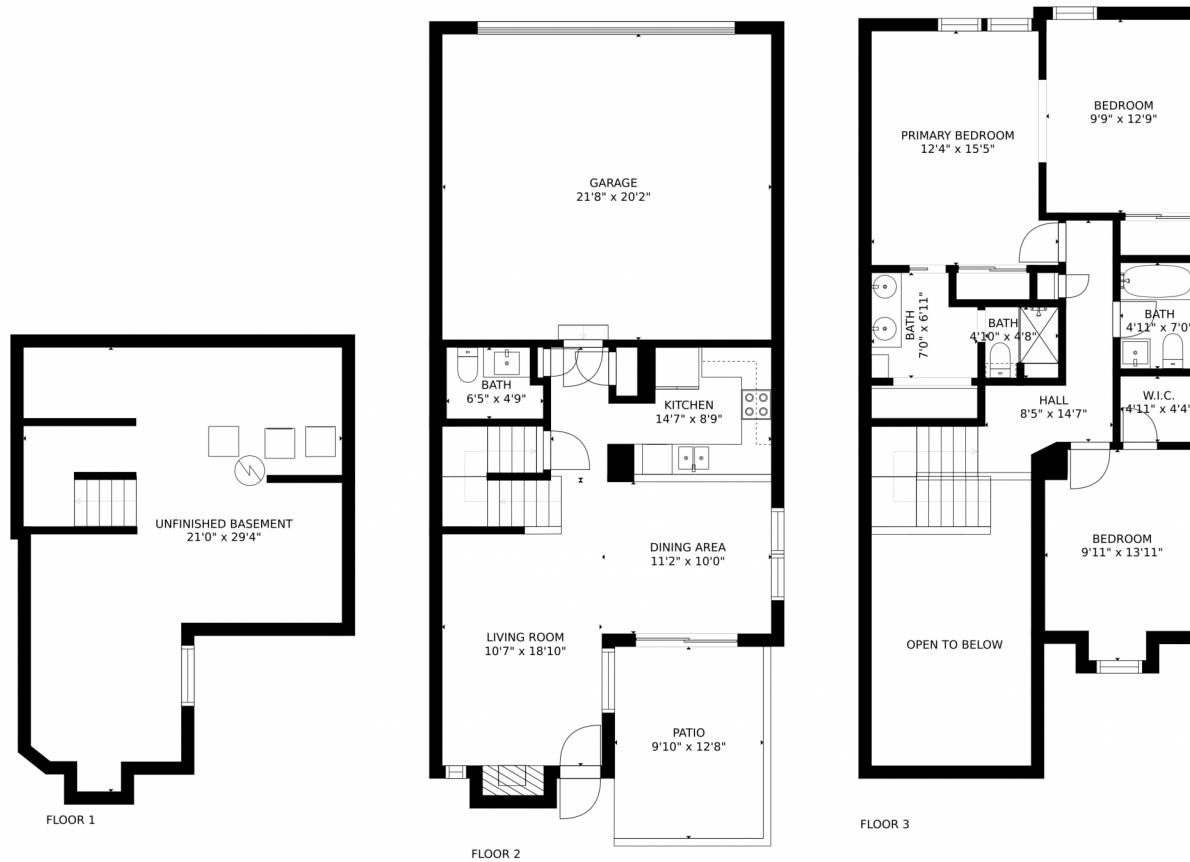
Disclaimer: Sizes and Dimensions are Approximate, Actual May Vary.



**Christie Lysaught**  
303-913-7539  
clysought@livsir.com  
<https://www.christielysaught.com/>



# 2889 West Long Circle, Littleton, CO 80120 – All Floors



GROSS INTERNAL AREA  
FLOOR 1: 12 sq. ft, FLOOR 2: 510 sq. ft  
FLOOR 3: 781 sq. ft, EXCLUDED AREAS:  
UNFINISHED BASEMENT: 465 sq. ft, GARAGE: 438 sq. ft  
PATIO: 124 sq. ft  
TOTAL: 1302 sq. ft

MEASUREMENTS CALCULATED BY V1Photos.com ARE DEEMED HIGHLY RELIABLE BUT NOT GUARANTEED.



Disclaimer: Sizes and Dimensions are Approximate, Actual May Vary.



**Christie Lysaught**  
303-913-7539  
clysaupt@livosir.com  
<https://www.christielysaupt.com/>

