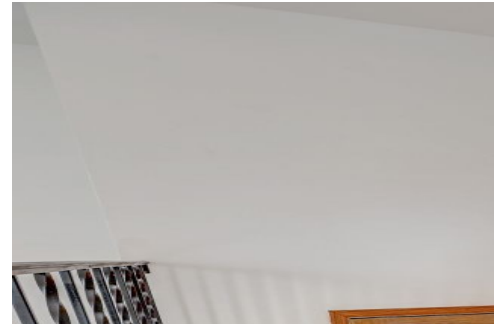





10522 Quail Court
Westminster, CO 80021
COMMUNITY: Countryside



 Single Family

 1620 SQFT

 3 Beds

 2 Baths

 2 Car

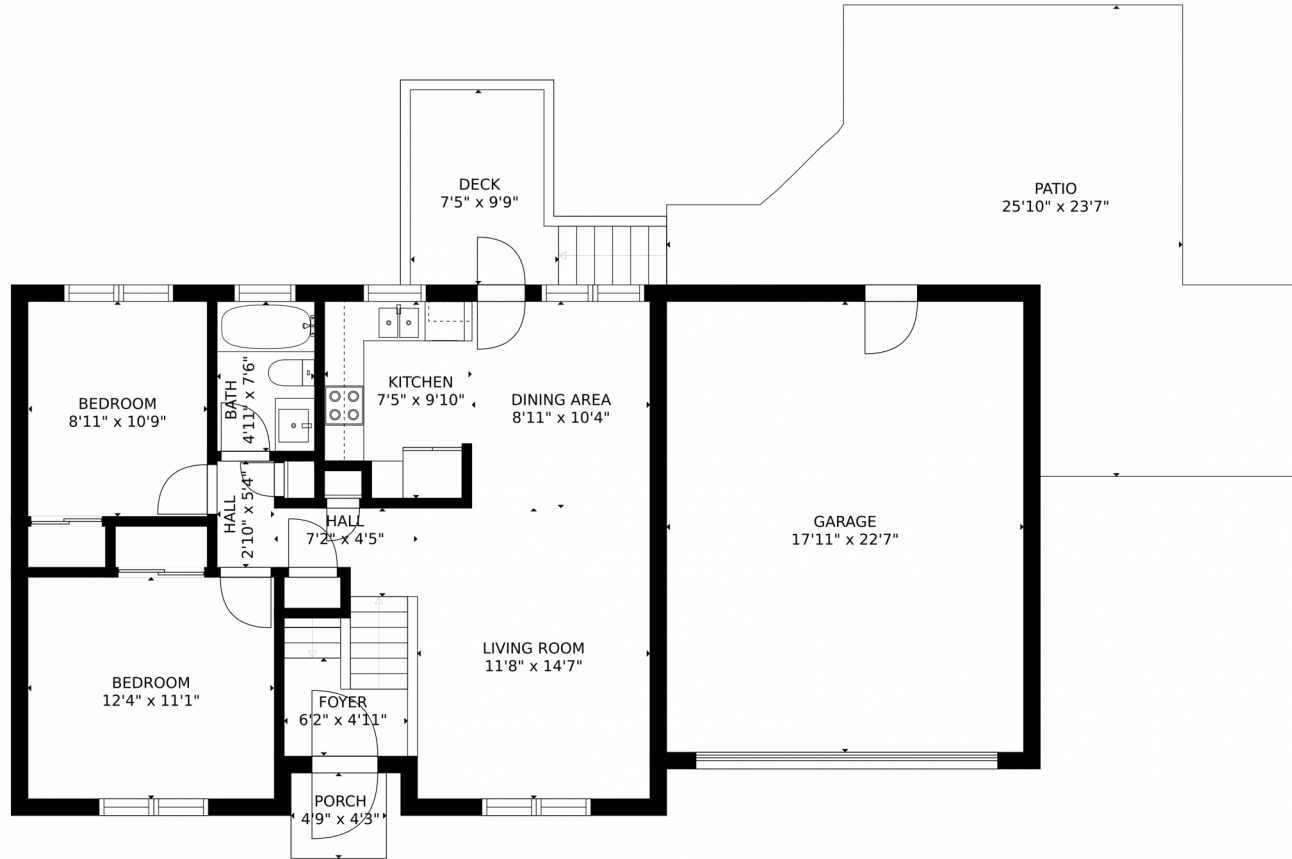
 0.18 Acre



Jason Cassidy
720-220-6964
jason@coloradorpm.com



10522 Quail Court, Westminster, CO 80021 – Main Level



GROSS INTERNAL AREA
FLOOR 1: 712 sq. ft. FLOOR 2: 762 sq. ft
EXCLUDED AREAS: , GARAGE: 404 sq. ft
DECK: 98 sq. ft. PATIO: 409 sq. ft
PORCH: 20 sq. ft
TOTAL: 1474 sq. ft

MEASUREMENTS CALCULATED BY V1Photos.com ARE DEEMED HIGHLY RELIABLE BUT NOT GUARANTEED.



Disclaimer: Sizes and Dimensions are Approximate, Actual May Vary.



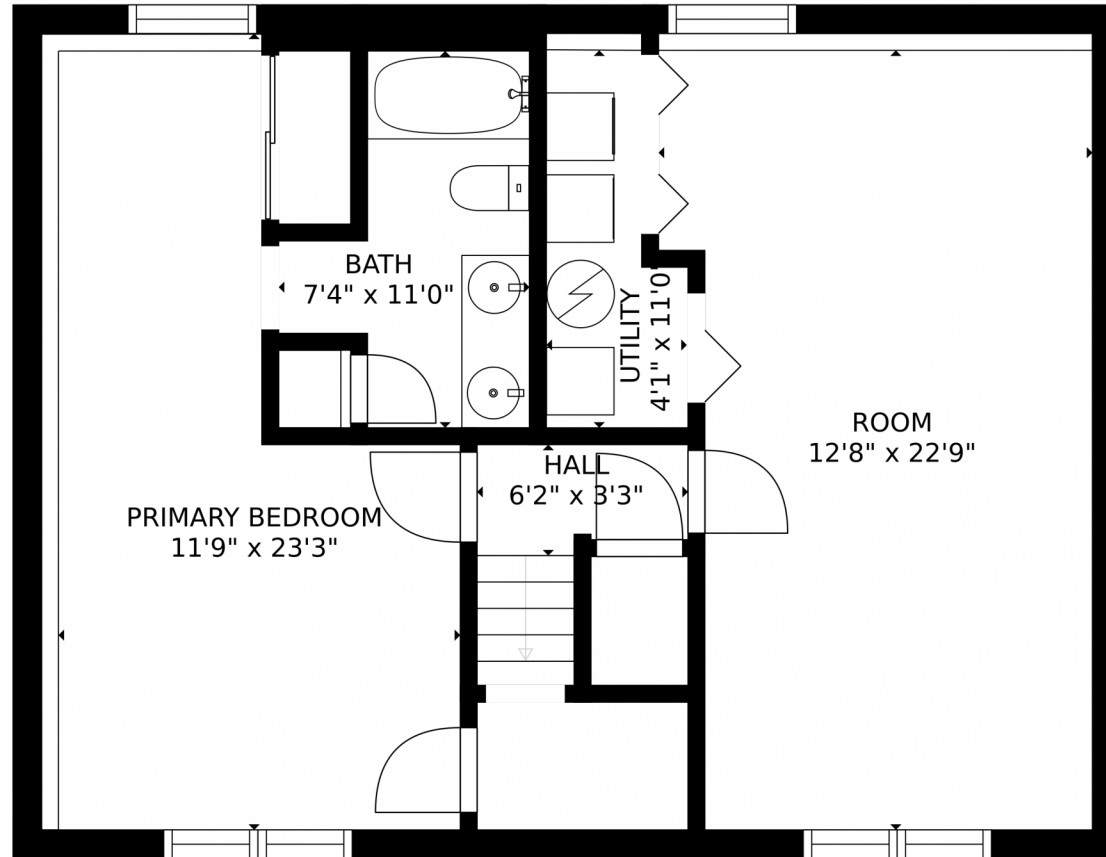
Jason Cassidy
720-220-6964
jason@coloradorpm.com



Scan code for more property details



10522 Quail Court, Westminster, CO 80021 – Lower Level



GROSS INTERNAL AREA
FLOOR 1: 712 sq. ft. FLOOR 2: 762 sq. ft
EXCLUDED AREAS: GARAGE: 404 sq. ft
DECK: 98 sq. ft. PATIO: 409 sq. ft
PORCH: 20 sq. ft
TOTAL: 1474 sq. ft

MEASUREMENTS CALCULATED BY V1Photos.COM ARE DEEMED HIGHLY RELIABLE BUT NOT GUARANTEED.



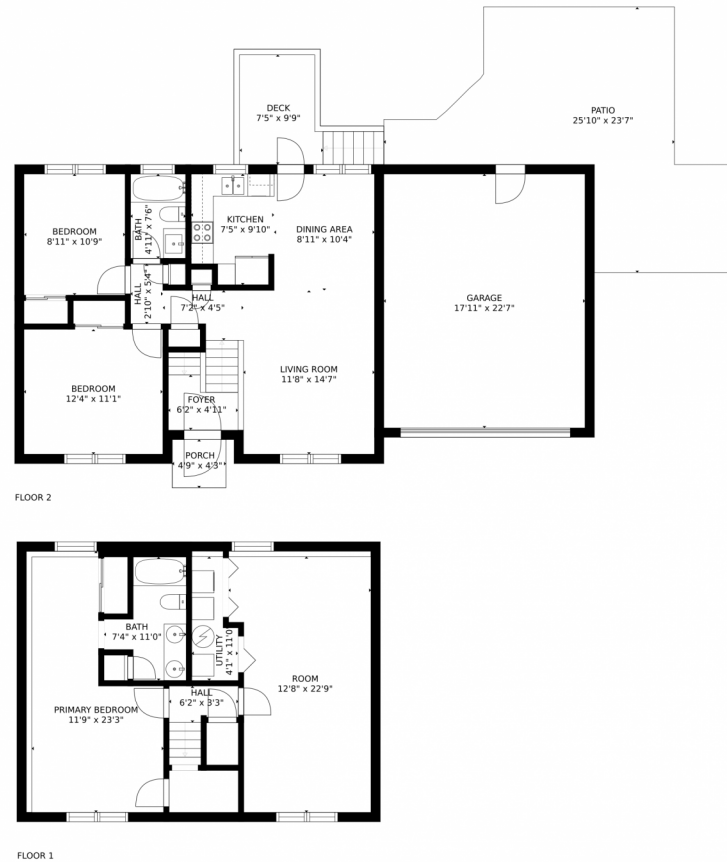
Disclaimer: Sizes and Dimensions are Approximate, Actual May Vary.



Jason Cassidy
720-220-6964
jason@coloradorpm.com



10522 Quail Court, Westminster, CO 80021 – All Levels



GROSS INTERNAL AREA
FLOOR 1: 712 sq. ft, FLOOR 2: 762 sq. ft
EXCLUDED AREAS: , GARAGE: 404 sq. ft
DECK: 98 sq. ft, PATIO: 409 sq. ft
PORCH: 20 sq. ft
TOTAL: 1474 sq. ft

MEASUREMENTS CALCULATED BY V1Photos.com ARE DEEMED HIGHLY RELIABLE BUT NOT GUARANTEED.



Disclaimer: Sizes and Dimensions are Approximate, Actual May Vary.



Jason Cassidy
720-220-6964
jason@coloradorpm.com

