


 Single Family

 1740 SQFT

 2 Beds

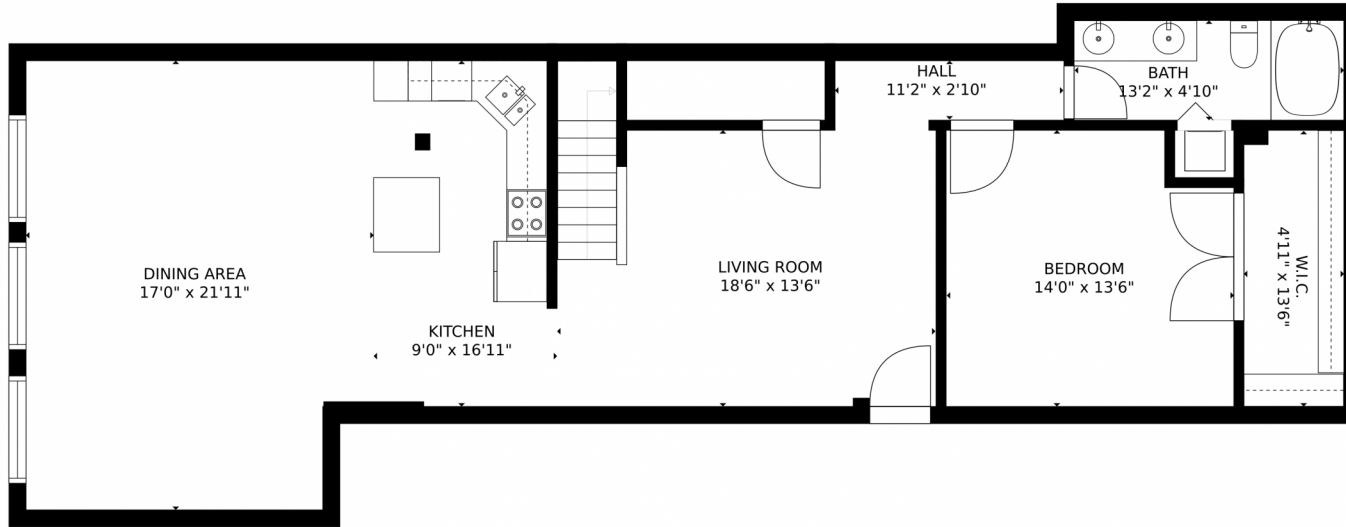
 2 Baths



Taylor Haas
303-665-7368
taylorh@coloradorpm.com
<https://www.coloradorpm.com/available-rental-properties-denv>



1555 California St #406, Denver, CO 80202 – Main Level



GROSS INTERNAL AREA
FLOOR 1: 1187 sq. ft, FLOOR 2: 502 sq. ft
TOTAL: 1689 sq. ft
MEASUREMENTS CALCULATED BY V1Photos.com ARE DEEMED HIGHLY RELIABLE BUT NOT GUARANTEED.



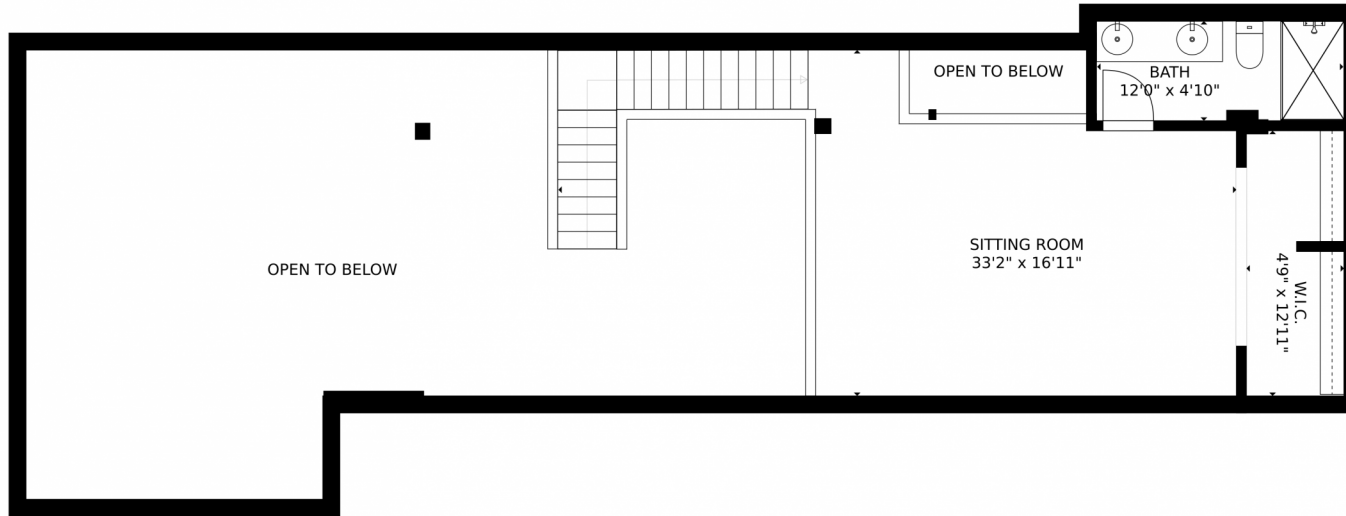
Disclaimer: Sizes and Dimensions are Approximate, Actual May Vary.



Taylor Haas
303-665-7368
taylorh@coloradorpm.com
<https://www.coloradorpm.com/available-rental-properties-denver>



1555 California St #406, Denver, CO 80202 – Upper Level



GROSS INTERNAL AREA
FLOOR 1: 1187 sq. ft, FLOOR 2: 502 sq. ft
TOTAL: 1689 sq. ft
MEASUREMENTS CALCULATED BY V1Photos.com ARE DEEMED HIGHLY RELIABLE BUT NOT GUARANTEED.



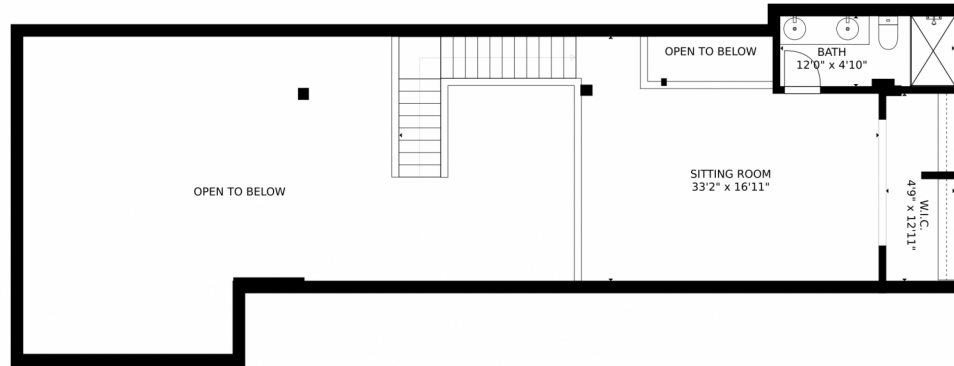
Disclaimer: Sizes and Dimensions are Approximate, Actual May Vary.



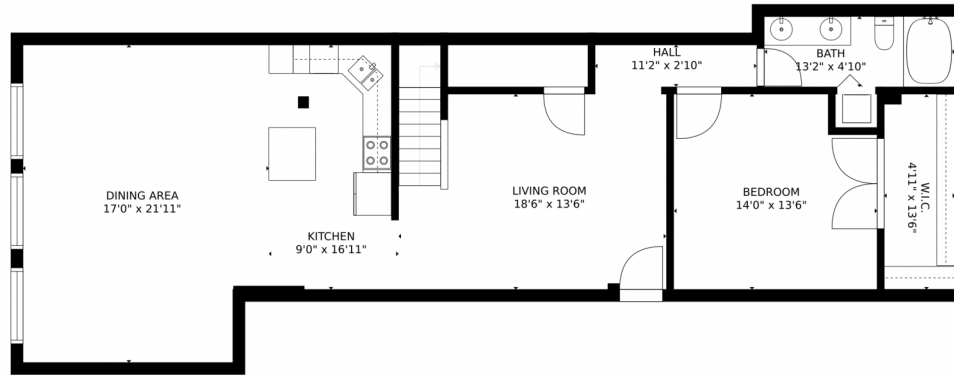
Taylor Haas
303-665-7368
taylorh@coloradorpm.com
<https://www.coloradorpm.com/available-rental-properties-denver>



1555 California St #406, Denver, CO 80202 – All Levels



FLOOR 2



FLOOR 1

GROSS INTERNAL AREA
FLOOR 1: 1187 sq. ft, FLOOR 2: 502 sq. ft
TOTAL: 1689 sq. ft
MEASUREMENTS CALCULATED BY V1Photos.COM ARE DEEMED HIGHLY RELIABLE BUT NOT GUARANTEED.



Disclaimer: Sizes and Dimensions are Approximate, Actual May Vary.



Taylor Haas
303-665-7368
taylorh@coloradorpm.com
<https://www.coloradorpm.com/available-rental-properties-denver>

