



1000 Hookline Circle
Loxahatchee, FL 33470
COMMUNITY: ARDEN

MLS # F10364386
PRICE \$1,399,999



Single Family 4422 SQFT 5 Beds 3/1 Baths 3 Car 0.24 Acre

PROPERTY DETAILS

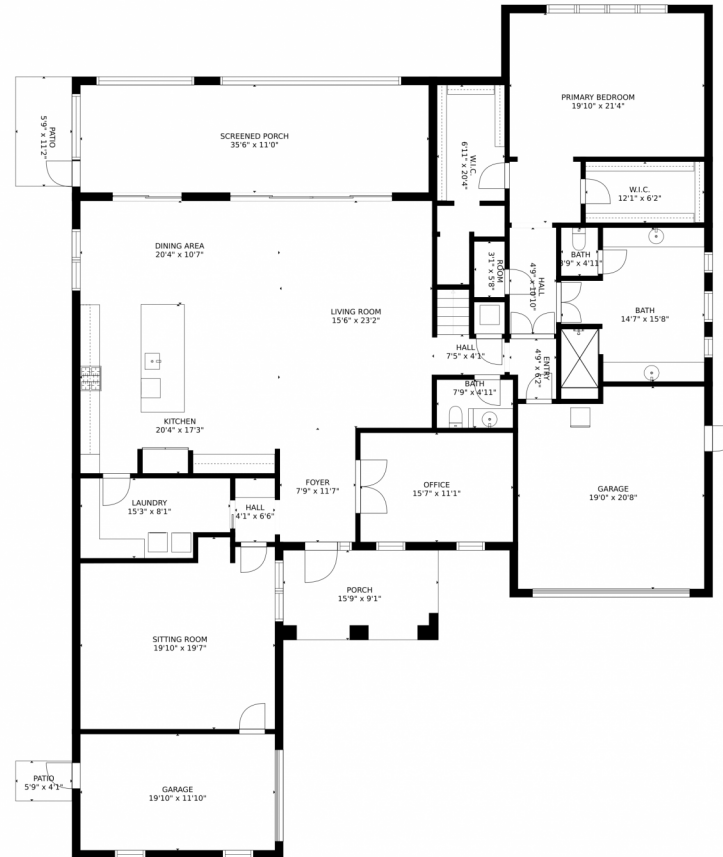
WELCOME HOME TO THIS FABULOUS CUSTOM KENCO ESTATE. AS YOU ENTER YOU WILL BE IN AWE OF THE SPACE BUILT FOR THE ENTERTAINER. CHEFS KITCHEN EQUIPPED W/ A LIEBHERR DBL SIDE BY SIDE FRIDGE & FREEZER & A BERTAZZONI 48" 6 BURNER GAS RANGE, KITCHEN AID WALL OVEN, MICROWAVE COMBO & DISHWASHER. TONS OF CABINET SPACE! CENTER ISLAND W/ SEATING. BREAKFAST AREA & OVERSIZED FAMILY ROOM. 2 LAUNDRY ROOMS! 5 BEDROOMS. LOFT EASILY CONVERTED INTO 6TH BEDROOM. MASTER ON MAIN, WALK IN CLOSETS, HIS/HERS SINKS, SEP TUB & SHOWER. BEDROOM 2 ON MAIN LEVEL IS WIRED AS A FUTURE MEDIA ROOM. MUD AREA, OFFICE HAS BUILT INS. CAMERAS, 3 AC'S, TANKLESS WH, IMPACT WINDOWS, BBQ PIT, & FENCED YARD. CLUBHOUSE, 5 ACRE FARM, TRAILS!



Beth Laggan
954-494-5143
beth@bethlagganrealestate.com
<https://bethlaggan.matrix.southfloridaml.com/Matrix/Public/>



1000 Hookline Circle, Loxahatchee, FL 33470 – 1st Floor



GROSS INTERNAL AREA
FLOOR 1: 2751 sq. ft, FLOOR 2: 1427 sq. ft
EXCLUDED AREAS: , GARAGE: 611 sq. ft
PATIO: 87 sq. ft, PORCH: 534 sq. ft
TOTAL: 4177 sq. ft
MEASUREMENTS CALCULATED BY V1Photos.com ARE DEEMED HIGHLY RELIABLE BUT NOT GUARANTEED.

Disclaimer: Sizes and Dimensions are Approximate, Actual May Vary.



Beth Laggan

954-494-5143

beth@bethlagganrealestate.com

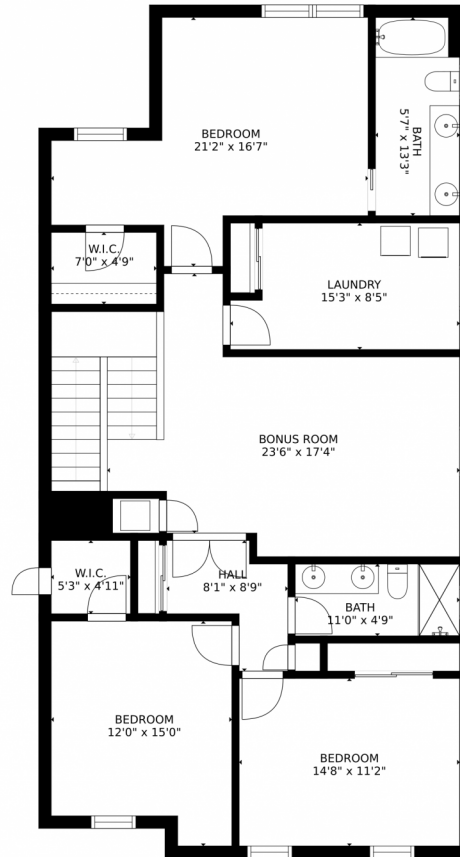
<https://bethlaggan.matrix.southfloridamls.com/Matrix/Public/>



Scan code
for more
property
details



1000 Hookline Circle, Loxahatchee, FL 33470 – 2nd Floor



GROSS INTERNAL AREA
FLOOR 1: 2751 sq. ft, FLOOR 2: 1427 sq. ft
EXCLUDED AREAS: GARAGE: 611 sq. ft
PATIO: 87 sq. ft, PORCH: 534 sq. ft
TOTAL: 4177 sq. ft
MEASUREMENTS CALCULATED BY V1Photos.com ARE DEEMED HIGHLY RELIABLE BUT NOT GUARANTEED.



Disclaimer: Sizes and Dimensions are Approximate, Actual May Vary.



Beth Laggan

954-494-5143

beth@bethlagganrealestate.com

<https://bethlaggan.matrix.southfloridaml.com/Matrix/Public/>



Scan code
for more
property
details



1000 Hookline Circle, Loxahatchee, FL 33470 – All Floors



GROSS INTERNAL AREA
FLOOR 1: 2751 sq. ft, FLOOR 2: 1427 sq. ft
EXCLUDED AREAS: GARAGE: 611 sq. ft
PATIO: 87 sq. ft, PORCH: 534 sq. ft
TOTAL: 4177 sq. ft
MEASUREMENTS CALCULATED BY V1Photos.com ARE DEEMED HIGHLY RELIABLE BUT NOT GUARANTEED.



Disclaimer: Sizes and Dimensions are Approximate, Actual May Vary.



Beth Laggan

954-494-5143

beth@bethlagganrealestate.com

<https://bethlaggan.matrix.southfloridamls.com/Matrix/Public/>



Scan code
for more
property
details

