




 Single Family

 2603 SQFT

 3 Beds

 3 Baths

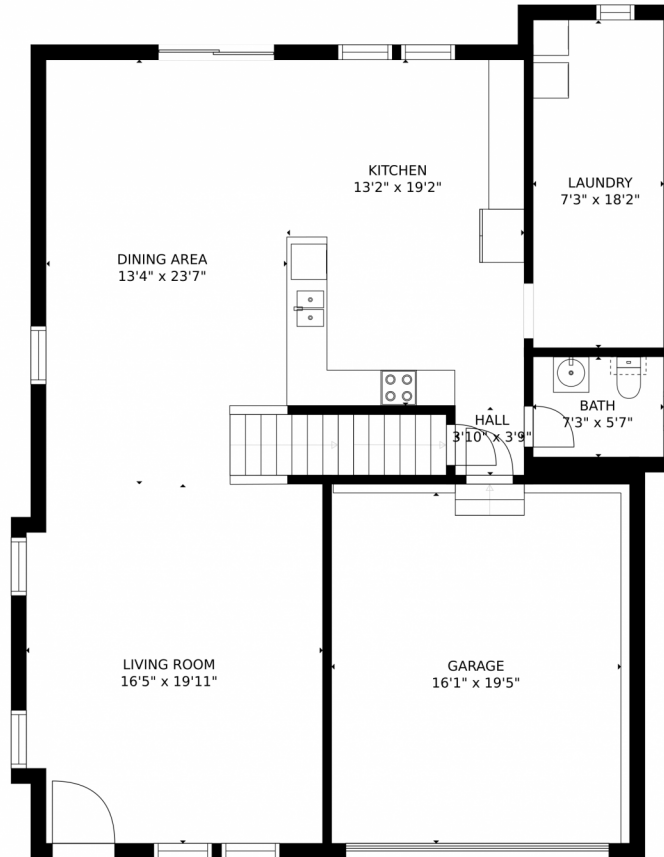


**Taylor Haas**  
303-665-7368  
taylorh@coloradorpm.com  
<https://www.coloradorpm.com/available-rental-properties-denver>

Scan code  
for more  
property  
details



# 3445 Dinosaur Street, Castle Rock, CO 80109 – Main Level



GROSS INTERNAL AREA  
FLOOR 1: 8 sq. ft. FLOOR 2: 1133 sq. ft.  
FLOOR 3: 1370 sq. ft. EXCLUDED AREAS:  
UNFINISHED BASEMENT: 988 sq. ft. GARAGE: 330 sq. ft.  
TOTAL: 2511 sq. ft.  
MEASUREMENTS CALCULATED BY V1Photos.COM ARE DEEMED HIGHLY RELIABLE BUT NOT GUARANTEED.



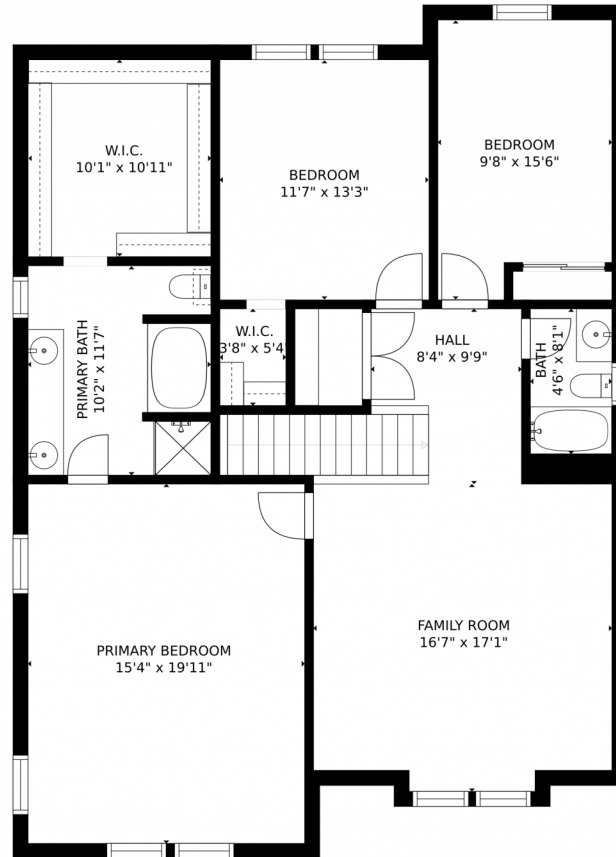
Disclaimer: Sizes and Dimensions are Approximate, Actual May Vary.



**Taylor Haas**  
303-665-7368  
taylorh@coloradorpm.com  
<https://www.coloradorpm.com/available-rental-properties-denver>



# 3445 Dinosaur Street, Castle Rock, CO 80109 – Upper Level



GROSS INTERNAL AREA  
FLOOR 1: 8 sq. ft. FLOOR 2: 1133 sq. ft.  
FLOOR 3: 1370 sq. ft. EXCLUDED AREAS:  
UNFINISHED BASEMENT: 988 sq. ft. GARAGE: 330 sq. ft.  
TOTAL: 2511 sq. ft.  
MEASUREMENTS CALCULATED BY V1Photos.COM ARE DEEMED HIGHLY RELIABLE BUT NOT GUARANTEED.



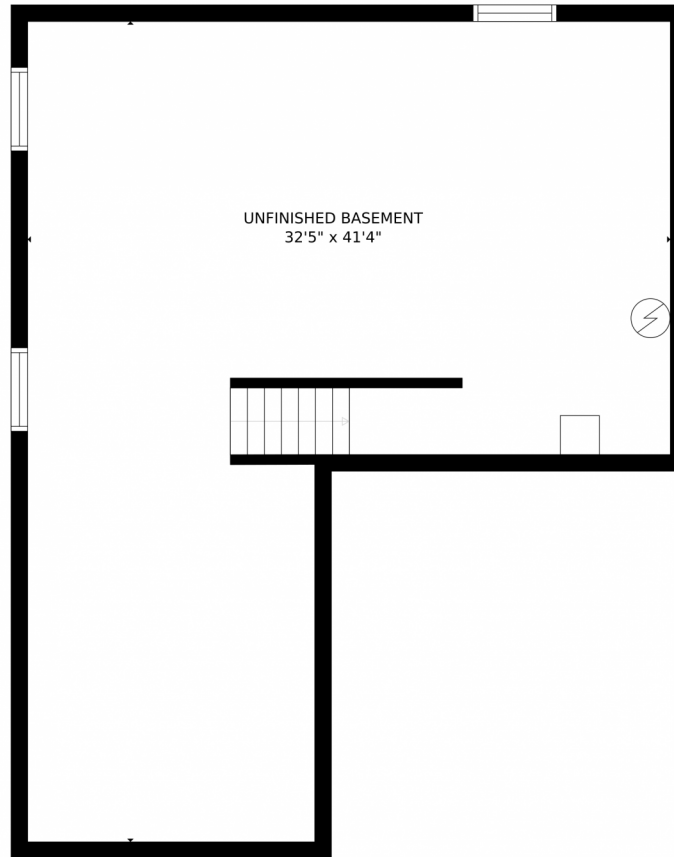
Disclaimer: Sizes and Dimensions are Approximate, Actual May Vary.



**Taylor Haas**  
303-665-7368  
taylorh@coloradorpm.com  
<https://www.coloradorpm.com/available-rental-properties-denver>



# 3445 Dinosaur Street, Castle Rock, CO 80109 – Lower Level



GROSS INTERNAL AREA  
FLOOR 1: 8 sq. ft, FLOOR 2: 1133 sq. ft  
FLOOR 3: 1370 sq. ft, EXCLUDED AREAS:  
UNFINISHED BASEMENT: 988 sq. ft, GARAGE: 330 sq. ft  
TOTAL: 2511 sq. ft  
MEASUREMENTS CALCULATED BY V1Photos.COM ARE DEEMED HIGHLY RELIABLE BUT NOT GUARANTEED.



Disclaimer: Sizes and Dimensions are Approximate, Actual May Vary.

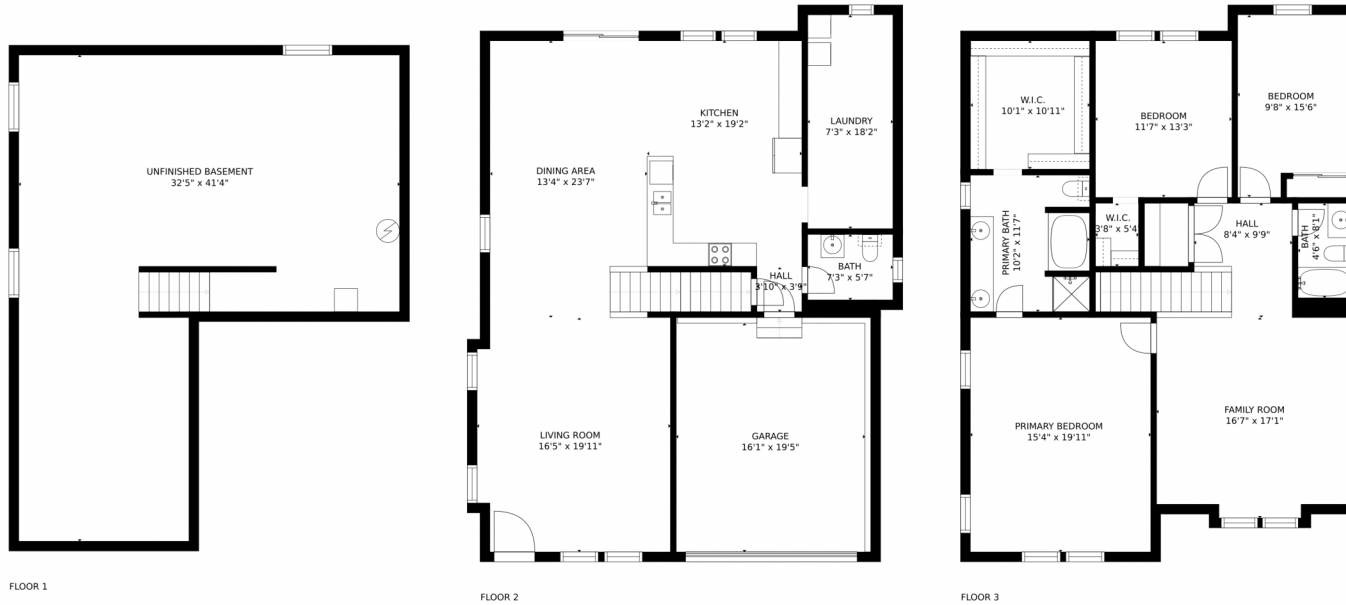


**Taylor Haas**  
303-665-7368  
taylorh@coloradorpm.com  
<https://www.coloradorpm.com/available-rental-properties-denver>



Scan code  
for more  
property  
details

# 3445 Dinosaur Street, Castle Rock, CO 80109 – All Levels



GROSS INTERNAL AREA  
FLOOR 1: 8 sq. ft, FLOOR 2: 1133 sq. ft  
FLOOR 3: 1370 sq. ft, EXCLUDED AREAS:  
UNFINISHED BASEMENT: 988 sq. ft, GARAGE: 330 sq. ft  
TOTAL: 2511 sq. ft  
MEASUREMENTS CALCULATED BY V1Photos.com ARE DEEMED HIGHLY RELIABLE BUT NOT GUARANTEED.



Disclaimer: Sizes and Dimensions are Approximate, Actual May Vary.



**Taylor Haas**  
303-665-7368  
taylorh@coloradorpm.com  
<https://www.coloradorpm.com/available-rental-properties-denver>



Scan code  
for more  
property  
details

