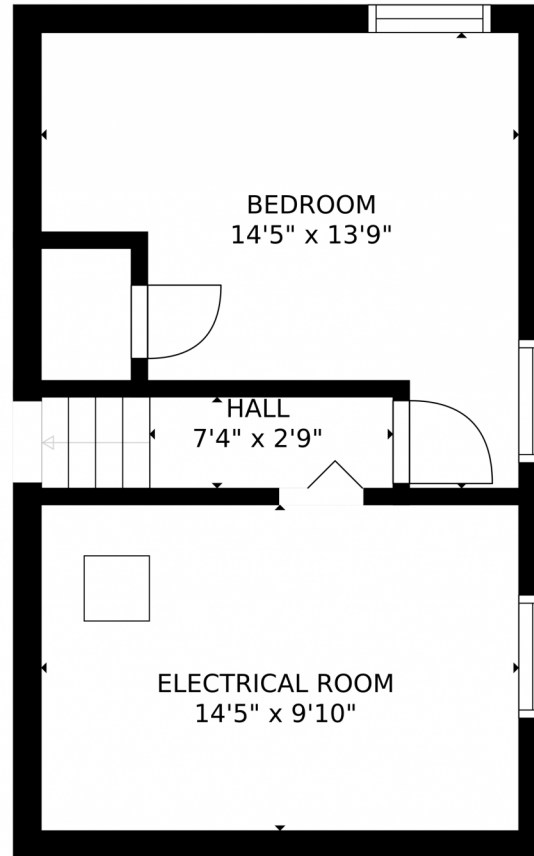


3368 Tail Spin Drive
Colorado Springs, CO 80916



 Single Family  2100 SQFT





GROSS INTERNAL AREA
FLOOR 1: 348 sq. ft. FLOOR 2: 390 sq. ft.
FLOOR 3: 399 sq. ft. FLOOR 4: 603 sq. ft.
EXCLUDED AREAS: , GARAGE: 475 sq. ft.
PATIO: 109 sq. ft. PORCH: 59 sq. ft.
TOTAL: 1740 sq. ft.

MEASUREMENTS CALCULATED BY V1Photos.COM ARE DEEMED HIGHLY RELIABLE BUT NOT GUARANTEED.

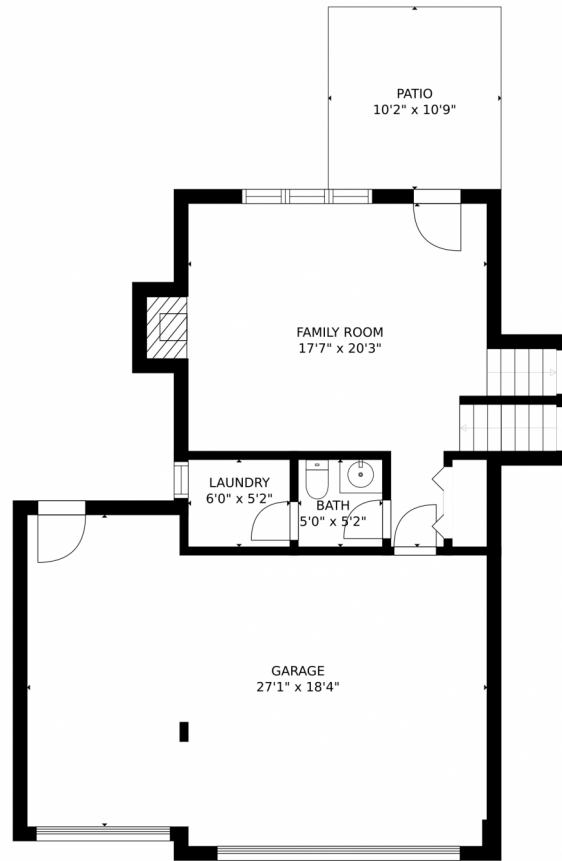


Disclaimer: Sizes and Dimensions are Approximate, Actual May Vary.



Scan code
for more
property
details

3368 Tail Spin Drive, Colorado Springs, CO 80916 – Lower Level



GROSS INTERNAL AREA
FLOOR 1: 348 sq. ft. FLOOR 2: 390 sq. ft.
FLOOR 3: 399 sq. ft. FLOOR 4: 603 sq. ft.
EXCLUDED AREAS: GARAGE: 475 sq. ft.
PATIO: 109 sq. ft. PORCH: 59 sq. ft.
TOTAL: 1740 sq. ft.

MEASUREMENTS CALCULATED BY V1Photos.com ARE DEEMED HIGHLY RELIABLE BUT NOT GUARANTEED.



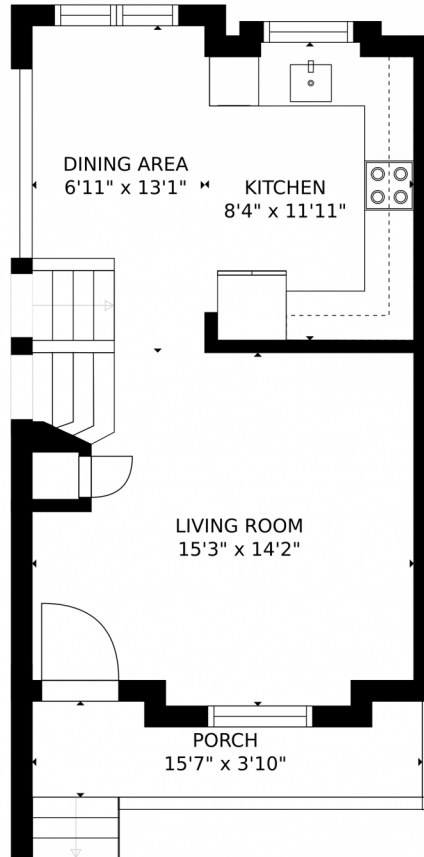
Disclaimer: Sizes and Dimensions are Approximate, Actual May Vary.



Scan code
for more
property
details



3368 Tail Spin Drive, Colorado Springs, CO 80916 – Main Level



GROSS INTERNAL AREA
FLOOR 1: 348 sq. ft., FLOOR 2: 390 sq. ft.
FLOOR 3: 399 sq. ft., FLOOR 4: 603 sq. ft.
EXCLUDED AREAS: , GARAGE: 475 sq. ft.
PATIO: 109 sq. ft., PORCH: 59 sq. ft.
TOTAL: 1740 sq. ft.
MEASUREMENTS CALCULATED BY V1Photos.COM ARE DEEMED HIGHLY RELIABLE BUT NOT GUARANTEED.



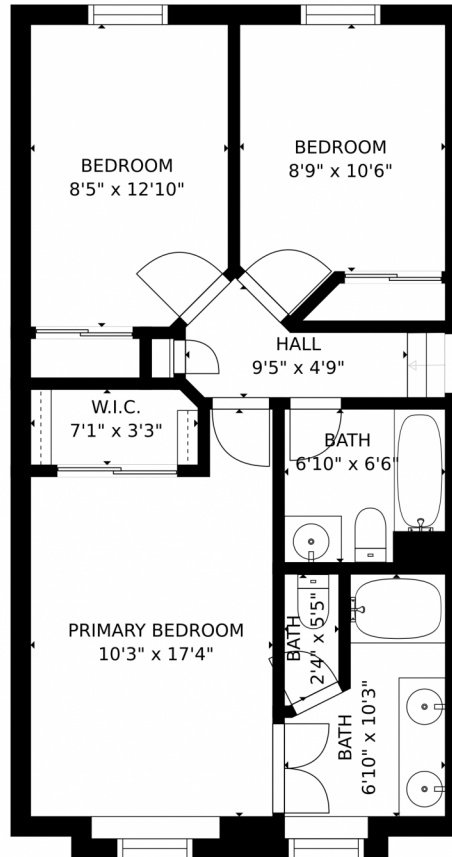
Disclaimer: Sizes and Dimensions are Approximate, Actual May Vary.



Scan code
for more
property
details



3368 Tail Spin Drive, Colorado Springs, CO 80916 — Upper Level



GROSS INTERNAL AREA
FLOOR 1: 348 sq. ft. FLOOR 2: 390 sq. ft
FLOOR 3: 399 sq. ft. FLOOR 4: 603 sq. ft
EXCLUDED AREAS: , GARAGE: 475 sq. ft
PATIO: 109 sq. ft. PORCH: 59 sq. ft
TOTAL: 1740 sq. ft
MEASUREMENTS CALCULATED BY V1Photos.COM ARE DEEMED HIGHLY RELIABLE BUT NOT GUARANTEED.



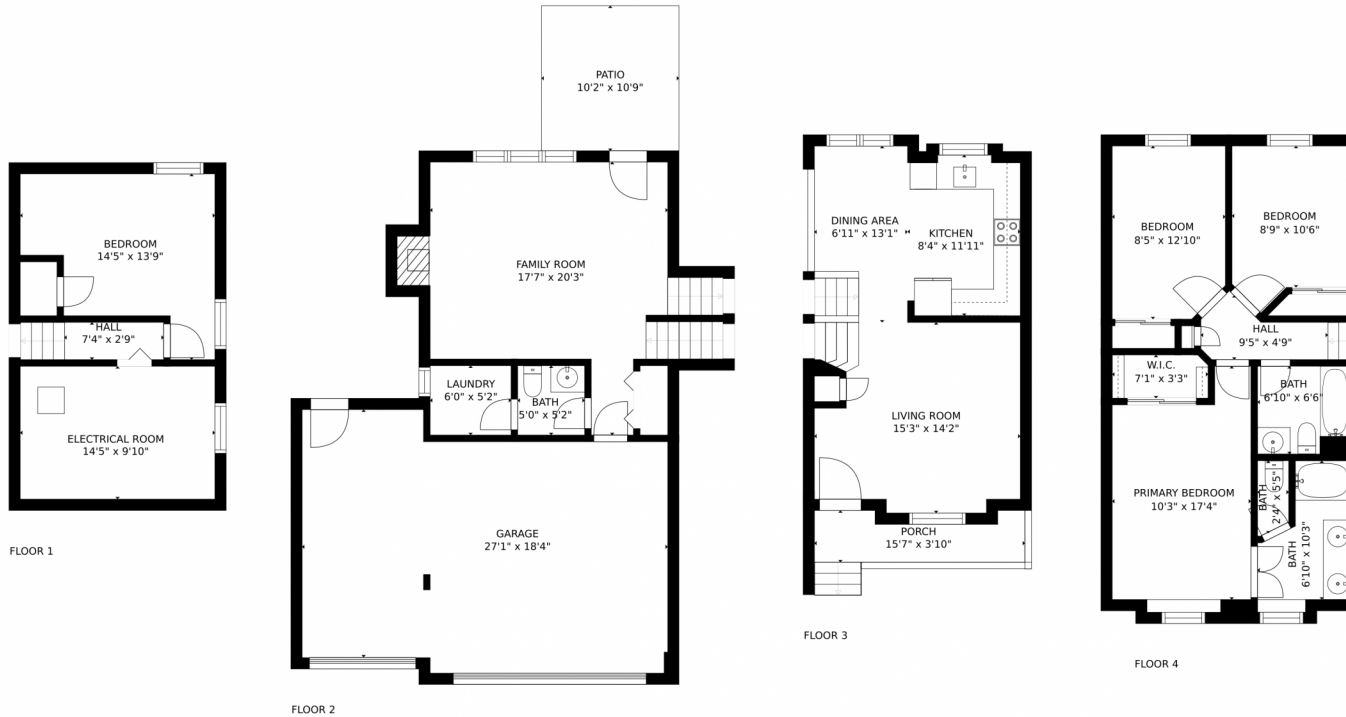
Disclaimer: Sizes and Dimensions are Approximate, Actual May Vary.



Scan code
for more
property
details



3368 Tail Spin Drive, Colorado Springs, CO 80916 – All Levels



GROSS INTERNAL AREA
 FLOOR 1: 348 sq. ft, FLOOR 2: 390 sq. ft
 FLOOR 3: 399 sq. ft, FLOOR 4: 603 sq. ft
 EXCLUDED AREAS: , GARAGE: 475 sq. ft
 PATIO: 109 sq. ft, PORCH: 59 sq. ft
 TOTAL: 1740 sq. ft
 MEASUREMENTS CALCULATED BY V1Photos.COM ARE DEEMED HIGHLY RELIABLE BUT NOT GUARANTEED.



Disclaimer: Sizes and Dimensions are Approximate, Actual May Vary.



Scan code for more property details