



139 County Road 64
 Shawnee, CO 80475
 COMMUNITY: Arrowhead

MLS # 8899700
 PRICE \$575,000



Single Family



2700 SQFT



2 Beds



2 Baths



1 Car



9.99 Acre

PROPERTY DETAILS

Are you looking for a private mountain home surrounded by trees? Do you like mountain adventures? Check out this custom, barn inspired home sitting on 10 wood acres and backing to national forest. Located between the small towns of Bailey and Shawnee with convenient access to the highway, shopping, fishing, hiking, ATV trails and local restaurants this home offers a feeling of mountain serenity surrounded by trees. Inside the lower level entry offers a place to kick off your boots and leads you to the family room and open kitchen. The open kitchen offers newer stainless steel appliances, fresh paint and a cozy wood burning stove to stay warm on those chilly nights. The lower lever bedroom is ample in size with a skylight. Adjacent to the full bathroom featuring slate tile jetted tub and laundry. Upstairs the big, open living room enjoys vaulted tongue and groove ceilings, natural light and access to the deck. The upstairs bedroom has a walk in closet, hidden storage and rustic bathroom. The garage offers a space for your car or toys and a workshop area. New DECRA stone coated steel roof and fenced in area for the pets complete the package. Working from home is easier here with options for a home office or additional space in the den . Outdoor enthusiasts will enjoy exploring the unlimited mountains that are your backyard and watching the local wildlife. Tour the surrounding towns and all they have to offer. Historical Shawnee offers small shops,



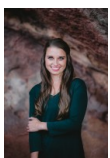
Kayla Maathuis
 303-507-2751
 kaylasellshomes@gmail.com
<http://yourjourneyhome.net>



Scan code
 for more
 property
 details



national forest access and a small town vibe. Bailey is just 12 minutes away and offers a brewery, winery, shops and the Sasquatch Outpost. Adventure to Guanalla Pass to enjoy food at the Shaggy Sheep or a drive to Mt Beirstadt, the local 14er. Located just a minute from Highway 285 which is paved, county maintained and on a school bus route! Current internet is Starlink at 40-60 mbps and Centurylink is available as well.



Kayla Maathuis

303-507-2751

kaylasellshomes@gmail.com

<http://yourjourneyhome.net>



Scan code
for more
property
details

