



519 North 28th Avenue Court
Greeley, CO 80631



Single Family



2536 SQFT



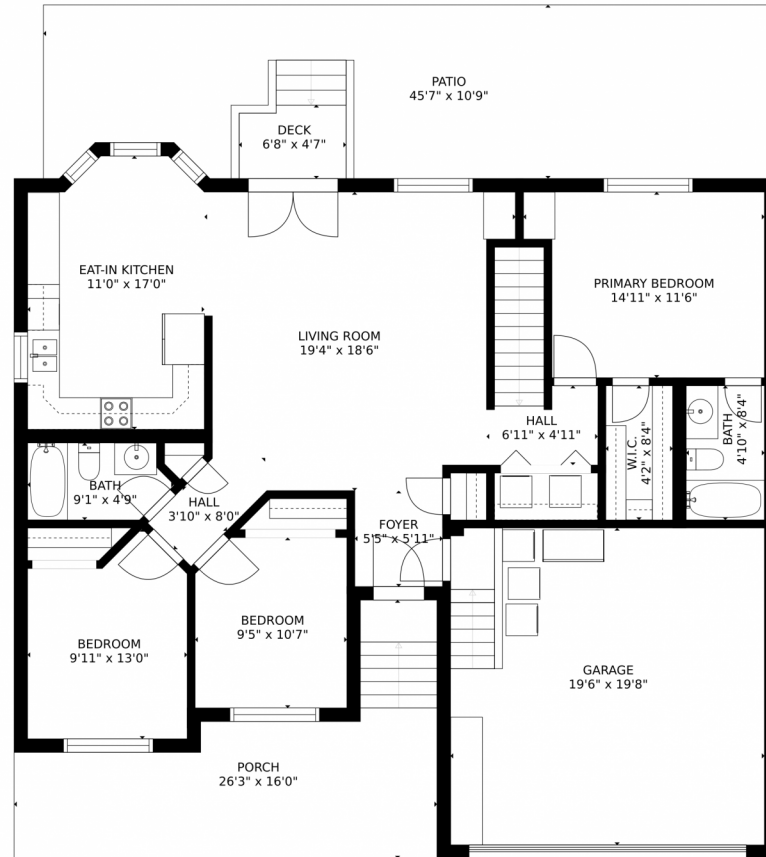
Chris Sauter
720-298-6702
csauter3@outlook.com



Scan code
for more
property
details



519 North 28th Avenue Court, Greeley, CO 80631 — Main Level



GROSS INTERNAL AREA
FLOOR 1: 367 sq. ft., FLOOR 2: 1219 sq. ft.
EXCLUDED AREAS: , UNFINISHED BASEMENT: 507 sq. ft.
GARAGE: 383 sq. ft., DECK: 41 sq. ft.
PATIO: 434 sq. ft., PORCH: 237 sq. ft.
TOTAL: 1585 sq. ft.
MEASUREMENTS CALCULATED BY V1Photos.com ARE DEEMED HIGHLY RELIABLE BUT NOT GUARANTEED.



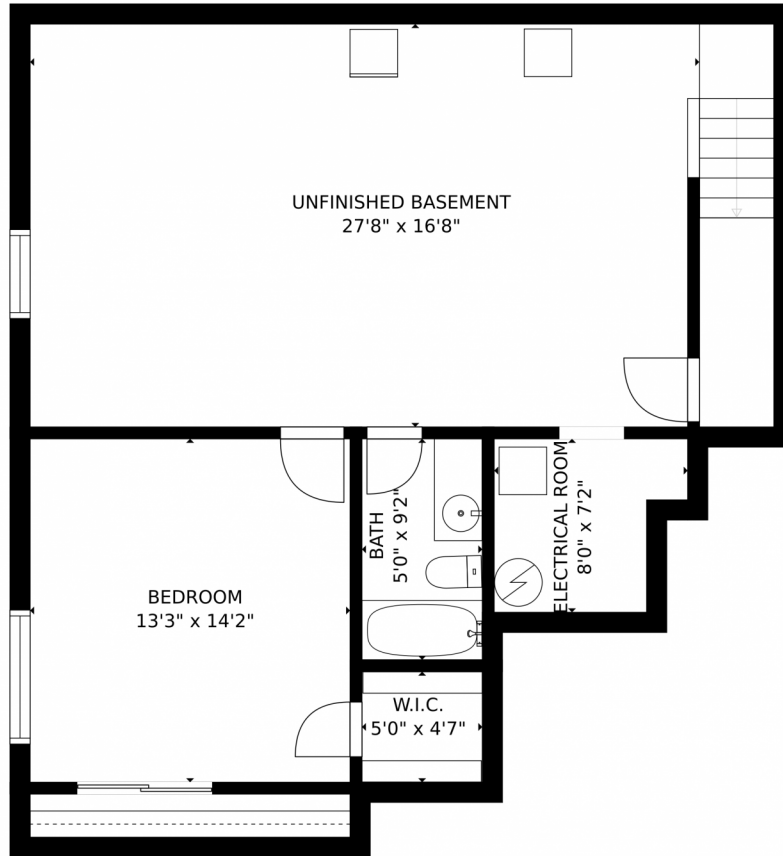
Disclaimer: Sizes and Dimensions are Approximate, Actual May Vary.



Chris Sauter
720-298-6702
csauter3@outlook.com



519 North 28th Avenue Court, Greeley, CO 80631 – Lower Level



GROSS INTERNAL AREA
FLOOR 1: 367 sq. ft, FLOOR 2: 1219 sq. ft
EXCLUDED AREAS: , UNFINISHED BASEMENT: 507 sq. ft
GARAGE: 383 sq. ft, DECK: 41 sq. ft
PATIO: 434 sq. ft, PORCH: 237 sq. ft
TOTAL: 1585 sq. ft
MEASUREMENTS CALCULATED BY V1Photos.com ARE DEEMED HIGHLY RELIABLE BUT NOT GUARANTEED.



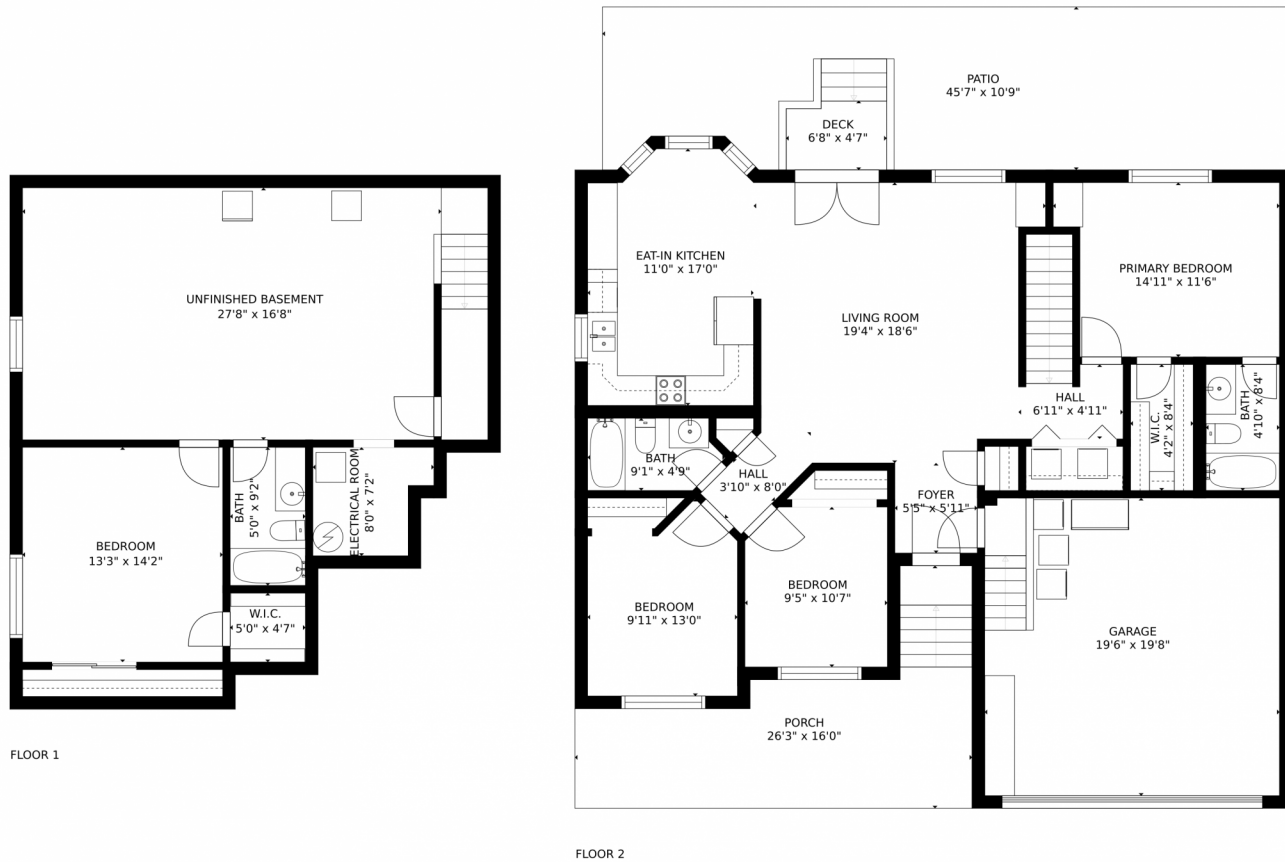
Disclaimer: Sizes and Dimensions are Approximate, Actual May Vary.



Chris Sauter
720-298-6702
csauter3@outlook.com



519 North 28th Avenue Court, Greeley, CO 80631 – All Levels



GROSS INTERNAL AREA
FLOOR 1: 367 sq. ft., FLOOR 2: 1219 sq. ft.
EXCLUDED AREAS: , UNFINISHED BASEMENT: 507 sq. ft.
GARAGE: 383 sq. ft., DECK: 41 sq. ft.
PATIO: 434 sq. ft., PORCH: 237 sq. ft.
TOTAL: 1585 sq. ft.

MEASUREMENTS CALCULATED BY V1Photos.com ARE DEEMED HIGHLY RELIABLE BUT NOT GUARANTEED.

Disclaimer: Sizes and Dimensions are Approximate, Actual May Vary.



Chris Sauter
720-298-6702
csauter3@outlook.com



Scan code
for more
property
details

