



 Single Family

 2652 SQFT

 4 Beds

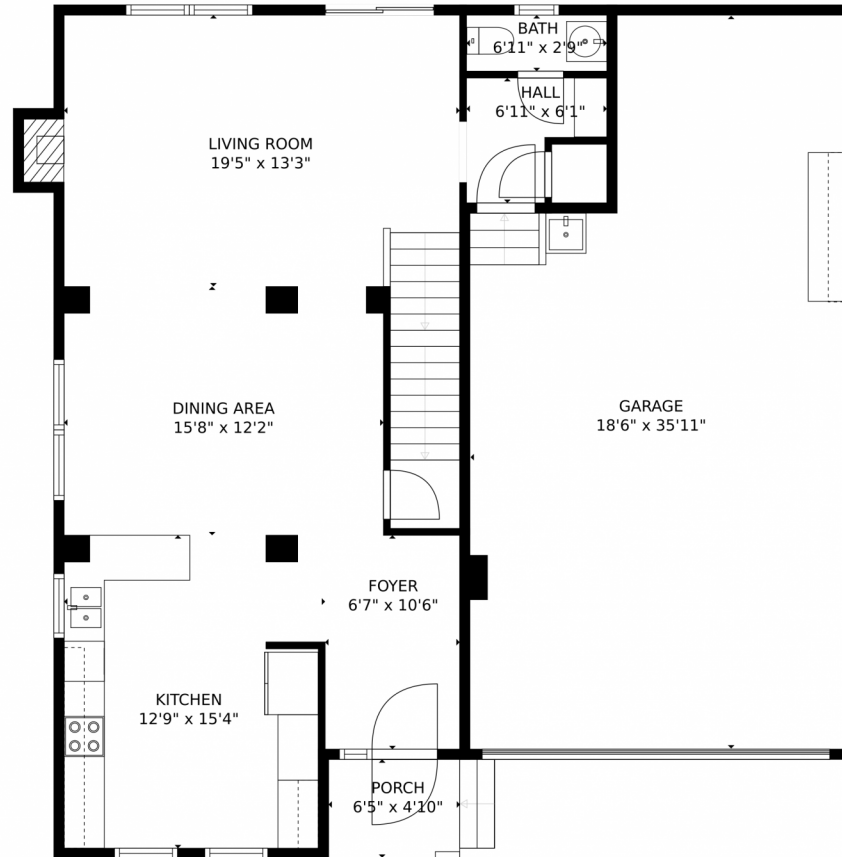
 3/1 Baths



Taylor Haas
303-665-7368
taylorh@coloradorpm.com
<https://www.coloradorpm.com/available-rental-properties-denver>



2030 Capital Dr, Colorado Springs, CO 80951 – Main Level



GROSS INTERNAL AREA
FLOOR 1: 755 sq. ft, FLOOR 2: 830 sq. ft
FLOOR 3: 1059 sq. ft, EXCLUDED AREAS:
GARAGE: 597 sq. ft, PORCH: 39 sq. ft
TOTAL: 2643 sq. ft
MEASUREMENTS CALCULATED BY V1Photos.COM ARE DEEMED HIGHLY RELIABLE BUT NOT GUARANTEED.



Disclaimer: Sizes and Dimensions are Approximate, Actual May Vary.



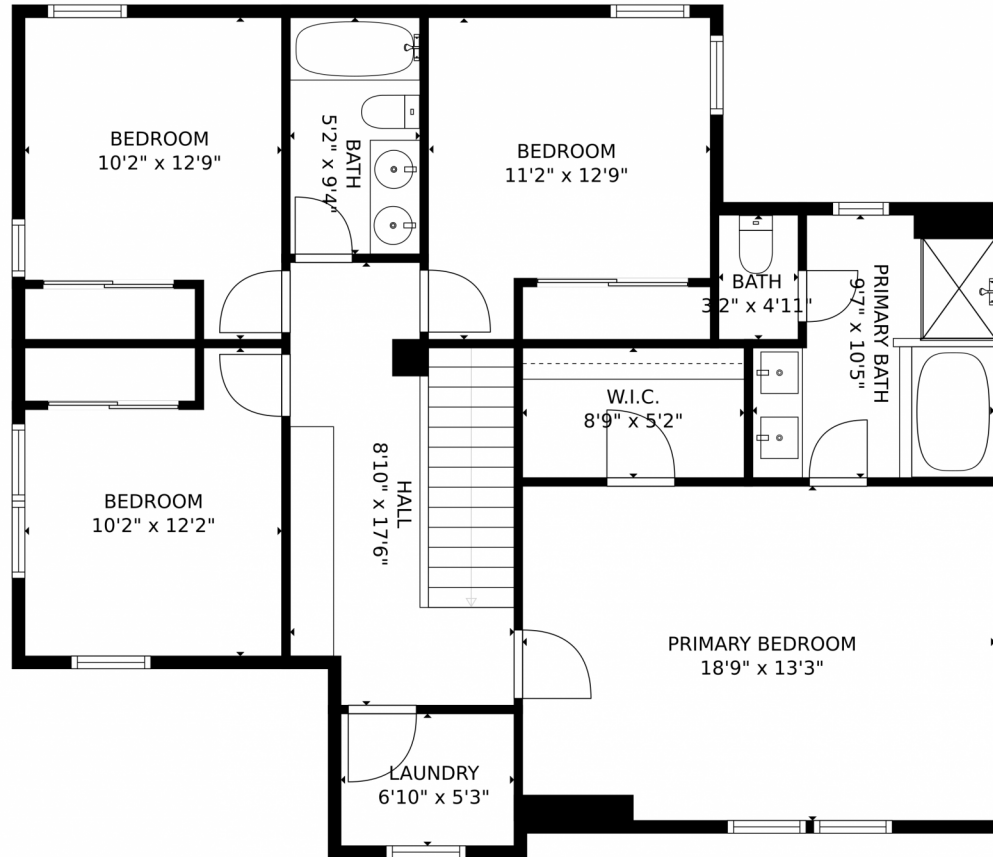
Taylor Haas
303-665-7368
taylorh@coloradorpm.com
<https://www.coloradorpm.com/available-rental-properties-denv>



Scan code for more property details



2030 Capital Dr, Colorado Springs, CO 80951 – Second Level



GROSS INTERNAL AREA
FLOOR 1: 755 sq. ft, FLOOR 2: 830 sq. ft
FLOOR 3: 1059 sq. ft, EXCLUDED AREAS:
GARAGE: 597 sq. ft, PORCH: 39 sq. ft
TOTAL: 2643 sq. ft
MEASUREMENTS CALCULATED BY V1Photos.COM ARE DEEMED HIGHLY RELIABLE BUT NOT GUARANTEED.



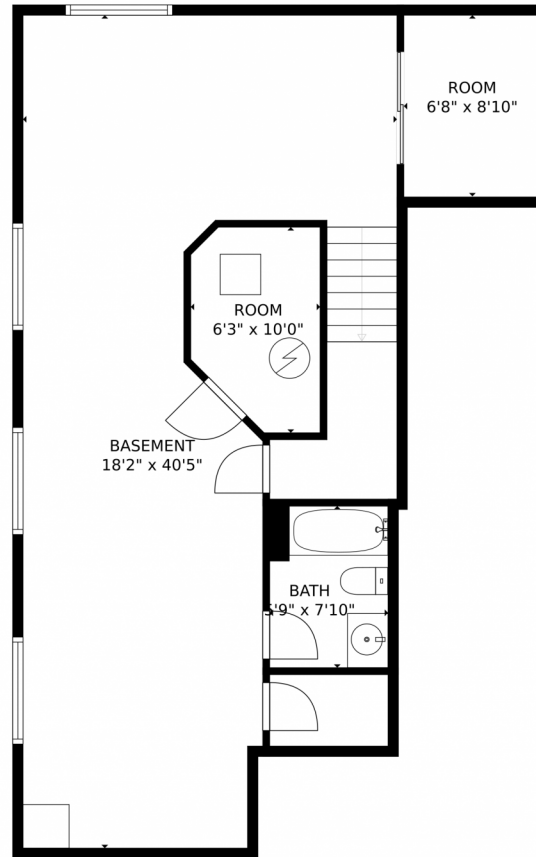
Disclaimer: Sizes and Dimensions are Approximate, Actual May Vary.



Taylor Haas
303-665-7368
taylorh@coloradorpm.com
<https://www.coloradorpm.com/available-rental-properties-denver>



2030 Capital Dr, Colorado Springs, CO 80951 — Lower Level



GROSS INTERNAL AREA
FLOOR 1: 755 sq. ft, FLOOR 2: 830 sq. ft
FLOOR 3: 1059 sq. ft, EXCLUDED AREAS:
GARAGE: 597 sq. ft, PORCH: 39 sq. ft
TOTAL: 2643 sq. ft

MEASUREMENTS CALCULATED BY V1Photos.COM ARE DEEMED HIGHLY RELIABLE BUT NOT GUARANTEED.



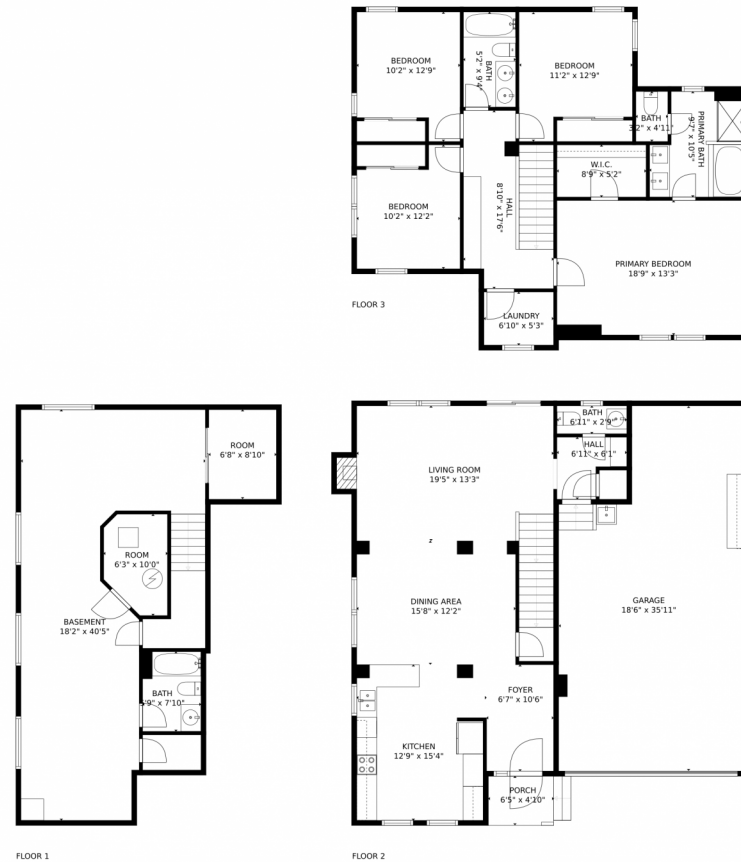
Disclaimer: Sizes and Dimensions are Approximate, Actual May Vary.



Taylor Haas
303-665-7368
taylorh@coloradorpm.com
<https://www.coloradorpm.com/available-rental-properties-denver>



2030 Capital Dr, Colorado Springs, CO 80951 — All Levels



GROSS INTERNAL AREA
FLOOR 1: 755 sq. ft, FLOOR 2: 830 sq. ft
FLOOR 3: 1059 sq. ft, EXCLUDED AREAS:
GARAGE: 597 sq. ft, PORCH: 39 sq. ft
TOTAL: 2643 sq. ft

MEASUREMENTS CALCULATED BY V1Photos.com ARE DEEMED HIGHLY RELIABLE BUT NOT GUARANTEED.



Disclaimer: Sizes and Dimensions are Approximate, Actual May Vary.



Taylor Haas
303-665-7368
taylorh@coloradorpm.com
<https://www.coloradorpm.com/available-rental-properties-denver>



Scan code
for more
property
details

