




 Single Family
  9649 SQFT
  4 Beds
  4/2 Baths
  6 Car
  5.03 Acre

PROPERTY DETAILS

When the opportunity knocks to live in one of the most exquisite custom homes in the Denver Metro area, you answer! 484 Spring Ranch Dr. is a Mesa Properties showstopper and truly exhibits the peaceful nature of the Foothills, but is only 1/2-hour from Empower Field and the amenities of the city. The exterior of the home highlights the great outdoors with \$100k in brand new landscaping since last year, a heated, covered dog run, multiple decks and patios, and a breathtaking porte cochere that leads through an iron-gated stone bell tower to a stunning courtyard with outdoor fireplace and multiple seating areas. All of this, welcoming you to cozy up and stay awhile. Once inside, you'll find this 4-bed, 6-bath home has been flawlessly designed down to every impeccable detail, including top notch Savant Smart Home technology. Custom paint, intricate woodwork and one-of-a-kind wall detailing will guide you through this masterful home. The kitchen is an entertainer's dream just waiting to have brand new memories made with guests enjoying fabulous food and beverage. With luxury appliances, multiple cooking spaces, breakfast nook, large pantry and an open concept to the living and dining rooms and a flow to the outdoor courtyard, entertaining will be a breeze. Toast to some of the most beautiful sunsets anywhere from the luxurious primary suite or entertain everyone you know in the expansive lower level complete with projector screen, game room, full bar, gym and



Jenna McMenaman
 303-912-0338
 jenna@madisonprops.com



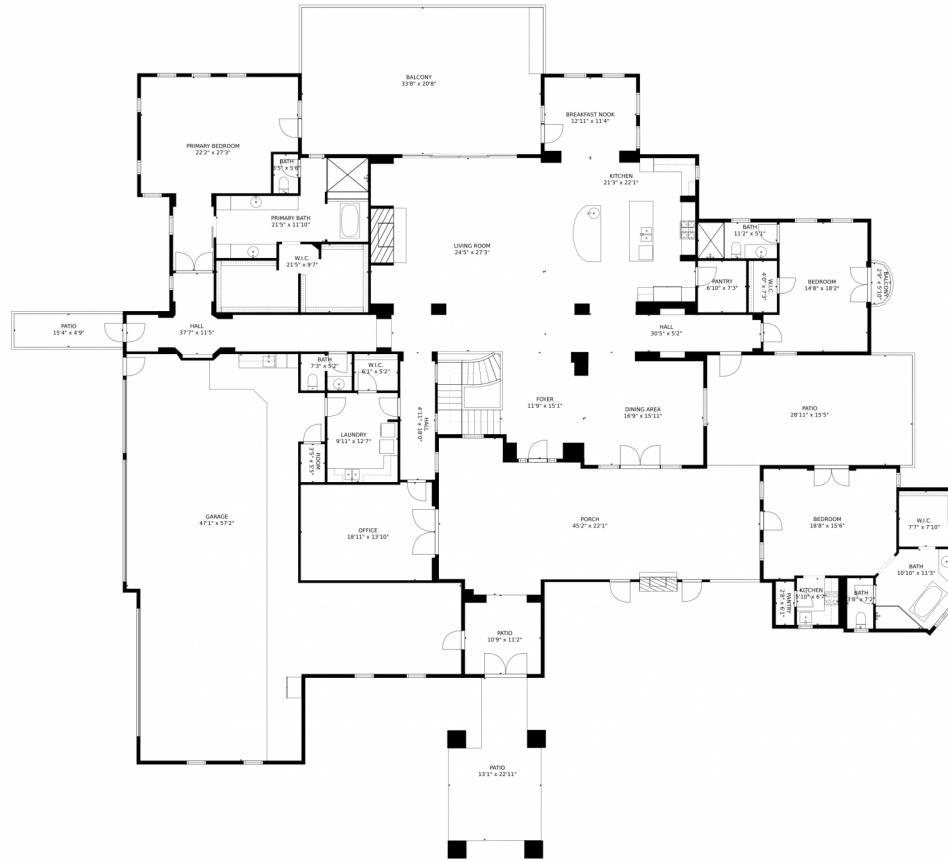
another bedroom with ensuite. If one of your guests would prefer a more private stay, they may opt for the 4th bedroom in the casita, which is a 1-bed, 1-bath, plus kitchenette across the courtyard. If luxury and character are what you've been looking for in the Foothills, you've found it here at 484 Spring Ranch Drive, where the best part of your day will be coming home!



Jenna McMenaman
303-912-0338
jenna@madisonprops.com



484 Spring Ranch Drive, Golden, CO 80401 – Main Level



GROSS INTERNAL AREA
FLOOR 1: 3724 sq. ft. FLOOR 2: 4586 sq. ft.
EXCLUDED AREAS: , PATIO: 1543 sq. ft
GARAGE: 1657 sq. ft. BALCONY: 713 sq. ft
PORCH: 780 sq. ft
TOTAL: 8310 sq. ft

MEASUREMENTS CALCULATED BY V1Photos.COM ARE DEEMED HIGHLY RELIABLE BUT NOT GUARANTEED.



Disclaimer: Sizes and Dimensions are Approximate, Actual May Vary.



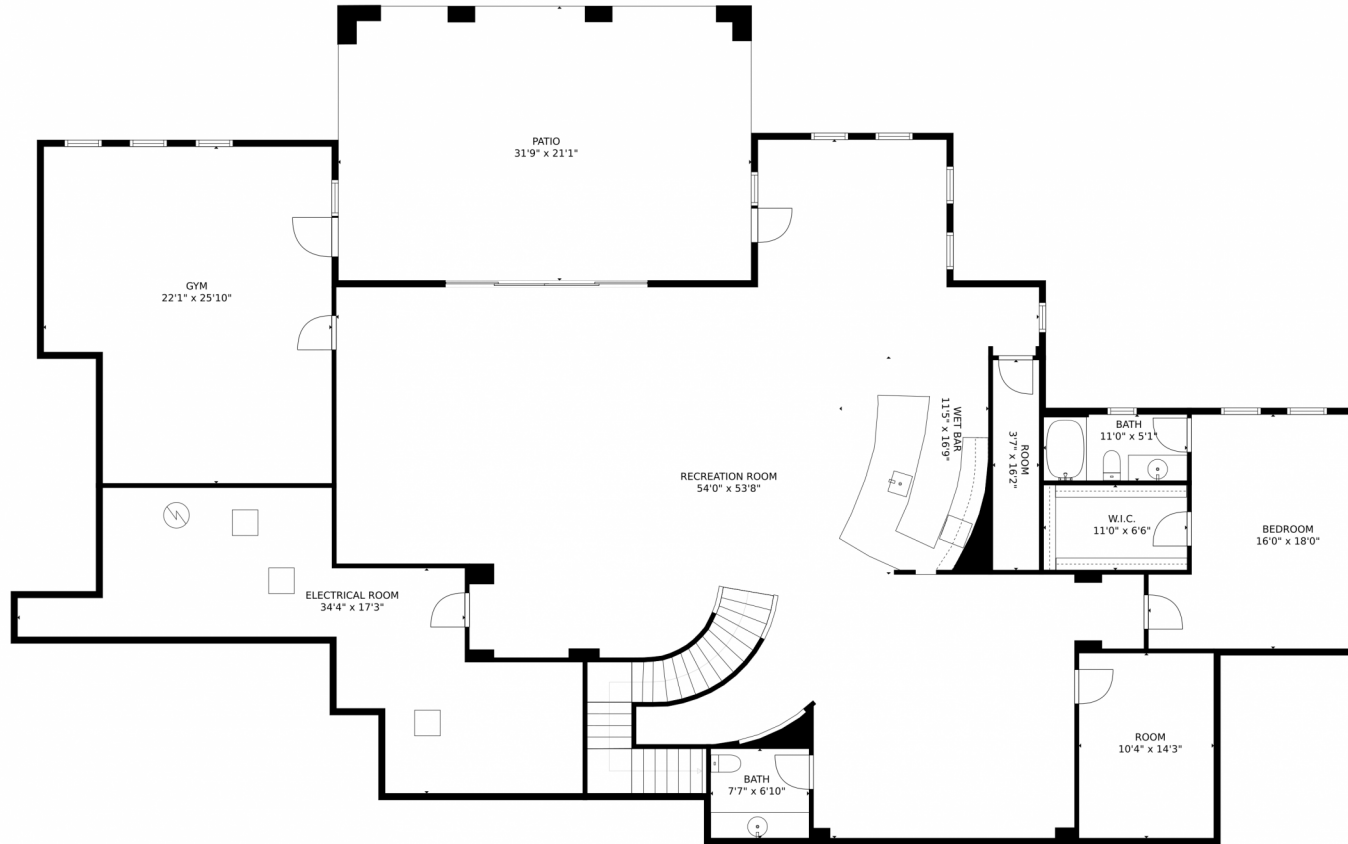
Jenna McMenaman
303-912-0338
jenna@madisonprops.com



Scan code
for more
property
details



484 Spring Ranch Drive, Golden, CO 80401 – Lower Level



GROSS INTERNAL AREA
FLOOR 1: 3724 sq. ft. FLOOR 2: 4586 sq. ft.
EXCLUDED AREAS: , PATIO: 1543 sq. ft
GARAGE: 1657 sq. ft. BALCONY: 713 sq. ft
PORCH: 780 sq. ft
TOTAL: 8310 sq. ft

MEASUREMENTS CALCULATED BY V1Photos.COM ARE DEEMED HIGHLY RELIABLE BUT NOT GUARANTEED.



Disclaimer: Sizes and Dimensions are Approximate, Actual May Vary.



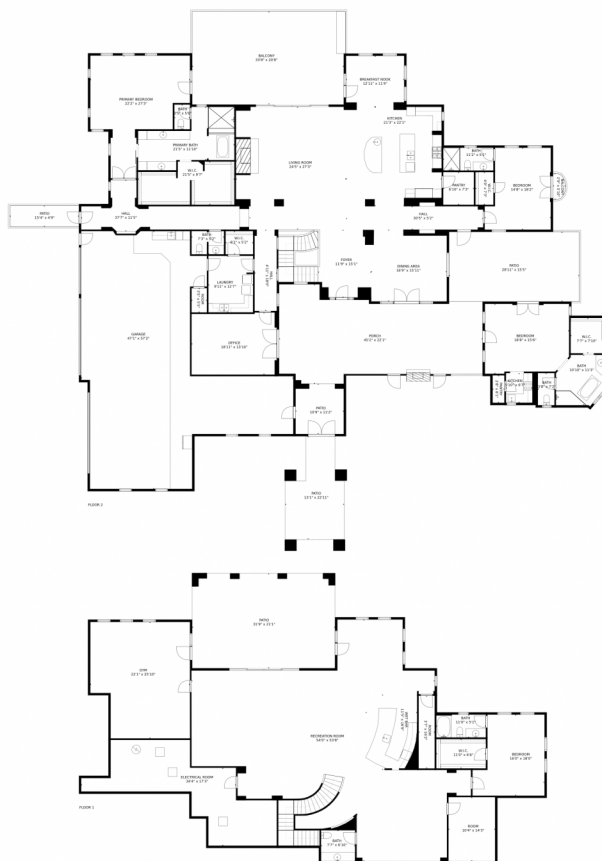
Jenna McMenaman
303-912-0338
jenna@madisonprops.com



Scan code
for more
property
details



484 Spring Ranch Drive, Golden, CO 80401 – All Levels



GROSS INTERNAL AREA
FLOOR 1: 3724 sq. ft. FLOOR 2: 4586 sq. ft.
EXCLUDED AREAS: , PATIO: 1543 sq. ft.
GARAGE: 1657 sq. ft. BALCONY: 713 sq. ft.
PORCH: 780 sq. ft.
TOTAL: 8310 sq. ft.

MEASUREMENTS CALCULATED BY V1Photos.COM ARE DEEMED HIGHLY RELIABLE BUT NOT GUARANTEED.



Disclaimer: Sizes and Dimensions are Approximate, Actual May Vary.



Jenna McMenaman
303-912-0338
jenna@madisonprops.com



Scan code
for more
property
details

