

COMPASS

14015 Willow Wood Court
Broomfield, CO 80020
COMMUNITY: Aspen Creek

Immaculate * Home Theater * Huge Garage Workshop Space



Single Family



5624 SQFT



5 Beds



4/1 Baths



3 Car



0.28 Acre

PROPERTY DETAILS

Immaculate semi-custom home on a cul-de-sac in the wonderful Aspen Creek neighborhood. Huge 3-car garage with 621 sqft additional workshop space! Home theater. Loft. 4 bedrooms + 3 baths upstairs. Beautiful Acacia wood floors. Nicely appointed kitchen with Maple cabinets, granite counters, island w/ seating, gas cooktop and new slate gray, no-fingerprint premium GE Profile appliances. Built-in outdoor BBQ, fountain/fire pit and plenty of privacy with mature trees. Neighborhood teaming with activity. Great neighbors. Community pool, Aspen Creek PK-8 school and multiple parks are just steps away. Welcome to Aspen Creek!



Brian MacDonald

303-915-6126

brian.macdonald@compass.com

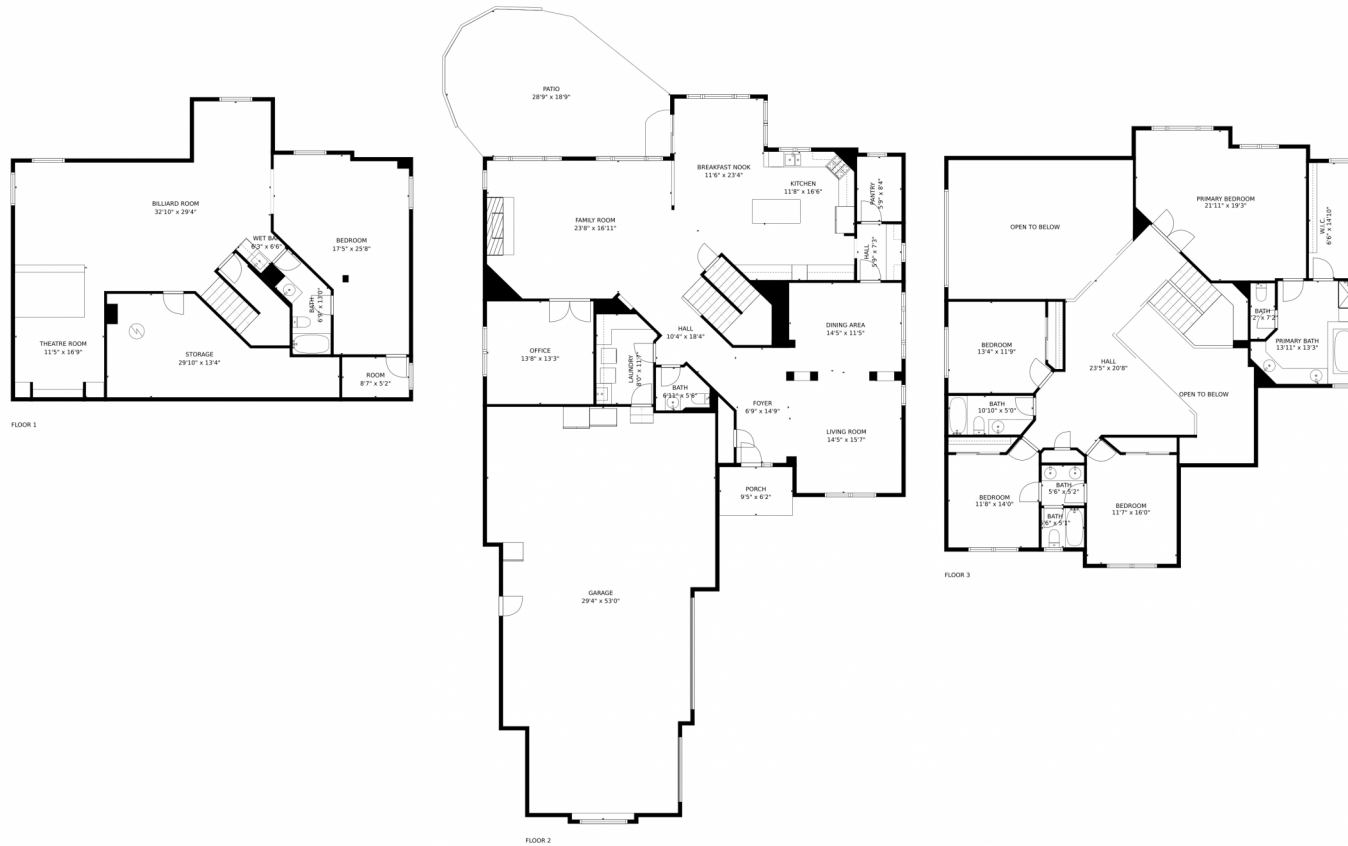
<http://www.IndianPeaks.Homes>



Scan code
for more
property
details



14015 Willow Wood Court, Broomfield, CO 80020 – All Levels



GROSS INTERNAL AREA
FLOOR 1: 1616 sq. ft. FLOOR 2: 2010 sq. ft.
FLOOR 3: 1741 sq. ft. EXCLUDED AREAS:
GARAGE: 1311 sq. ft. PATIO: 440 sq. ft.
PORCH: 59 sq. ft.
TOTAL: 5366 sq. ft.

MEASUREMENTS CALCULATED BY V1Photos.COM ARE DEEMED HIGHLY RELIABLE BUT NOT GUARANTEED.

Disclaimer: Sizes and Dimensions are Approximate, Actual May Vary.



Brian MacDonald
303-915-6126
brian.macdonald@compass.com
<http://www.IndianPeaks.Homes>



Scan code
for more
property
details

