



Single Family



1355 SQFT



3 Beds



1/1 Baths



**Taylor Haas**

303-665-7368

taylorh@coloradorpm.com

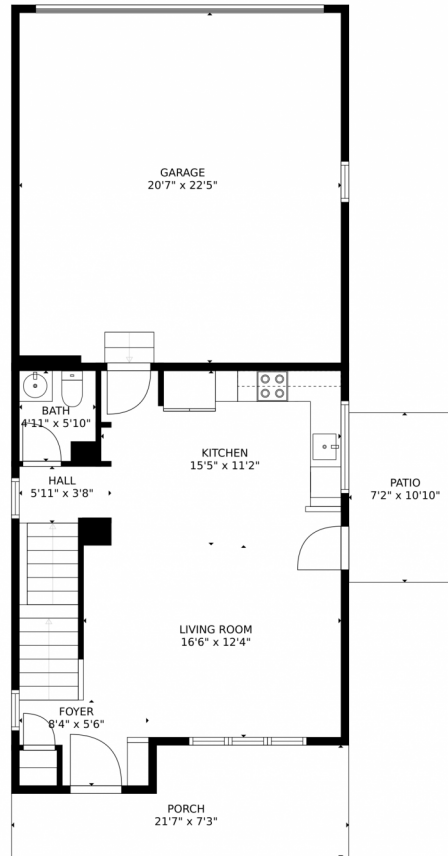
<https://www.coloradorpm.com/available-rental-properties-denver>



Scan code  
for more  
property  
details



# 4667 Crestone Peak Street, Brighton, CO 80601 – Main Level



GROSS INTERNAL AREA  
FLOOR 1: 179 sq. ft, FLOOR 2: 510 sq. ft  
FLOOR 3: 776 sq. ft, EXCLUDED AREAS:  
UNFINISHED BASEMENT: 268 sq. ft, GARAGE: 463 sq. ft  
PATIO: 78 sq. ft, PORCH: 128 sq. ft  
TOTAL: 1465 sq. ft

MEASUREMENTS CALCULATED BY V1Photos.com ARE DEEMED HIGHLY RELIABLE BUT NOT GUARANTEED.



Disclaimer: Sizes and Dimensions are Approximate, Actual May Vary.



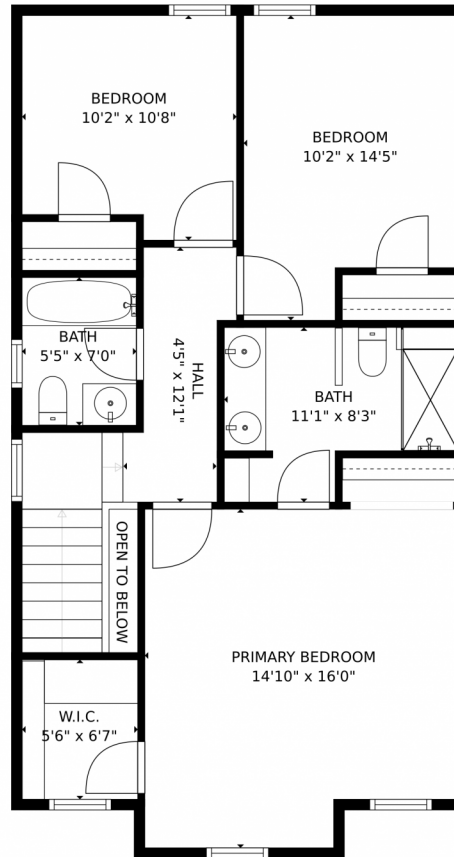
**Taylor Haas**  
303-665-7368  
taylorh@coloradorpm.com  
<https://www.coloradorpm.com/available-rental-properties-denv>



Scan code  
for more  
property  
details



4667 Crestone Peak Street, Brighton, CO 80601 — Upper Level



GROSS INTERNAL AREA  
FLOOR 1: 179 sq. ft. FLOOR 2: 510 sq. ft.  
FLOOR 3: 776 sq. ft. EXCLUDED AREAS:  
UNFINISHED BASEMENT: 268 sq. ft. GARAGE: 463 sq. ft.  
PATIO: 78 sq. ft. PORCH: 128 sq. ft.  
TOTAL: 1465 sq. ft.

MEASUREMENTS CALCULATED BY V1Photos.com ARE DEEMED HIGHLY RELIABLE BUT NOT GUARANTEED.



Disclaimer: Sizes and Dimensions are Approximate, Actual May Vary.



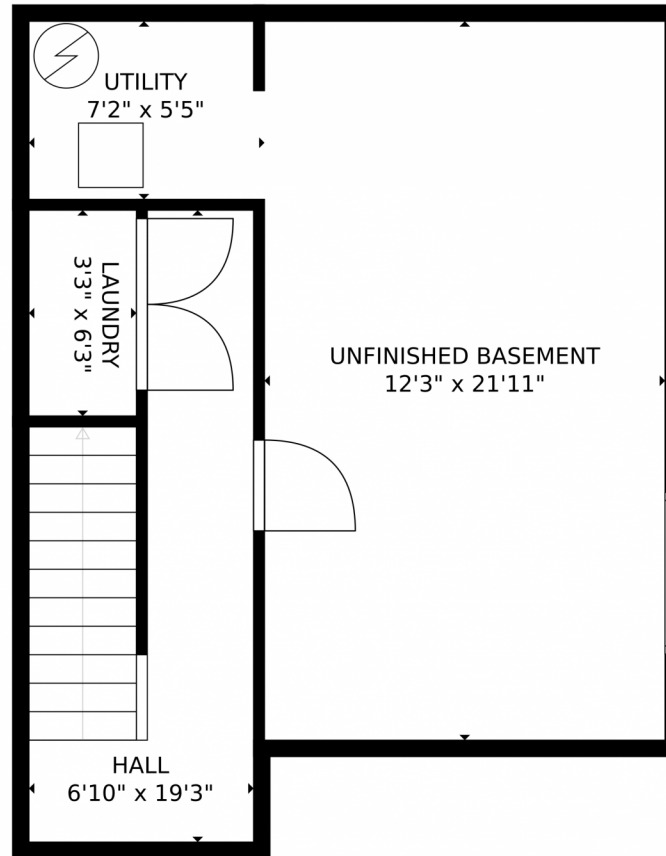
**Taylor Haas**  
303-665-7368  
taylorh@coloradorm.com  
<https://www.coloradorm.com/available-rental-properties-denver>



Scan code  
for more  
property  
details



4667 Crestone Peak Street, Brighton, CO 80601 – Lower Level



GROSS INTERNAL AREA  
FLOOR 1: 179 sq. ft, FLOOR 2: 510 sq. ft  
FLOOR 3: 776 sq. ft, EXCLUDED AREAS:  
UNFINISHED BASEMENT: 268 sq. ft, GARAGE: 463 sq. ft  
PATIO: 78 sq. ft, PORCH: 128 sq. ft  
TOTAL: 1465 sq. ft  
MEASUREMENTS CALCULATED BY V1Photos.com ARE DEEMED HIGHLY RELIABLE BUT NOT GUARANTEED.

Disclaimer: Sizes and Dimensions are Approximate, Actual May Vary.

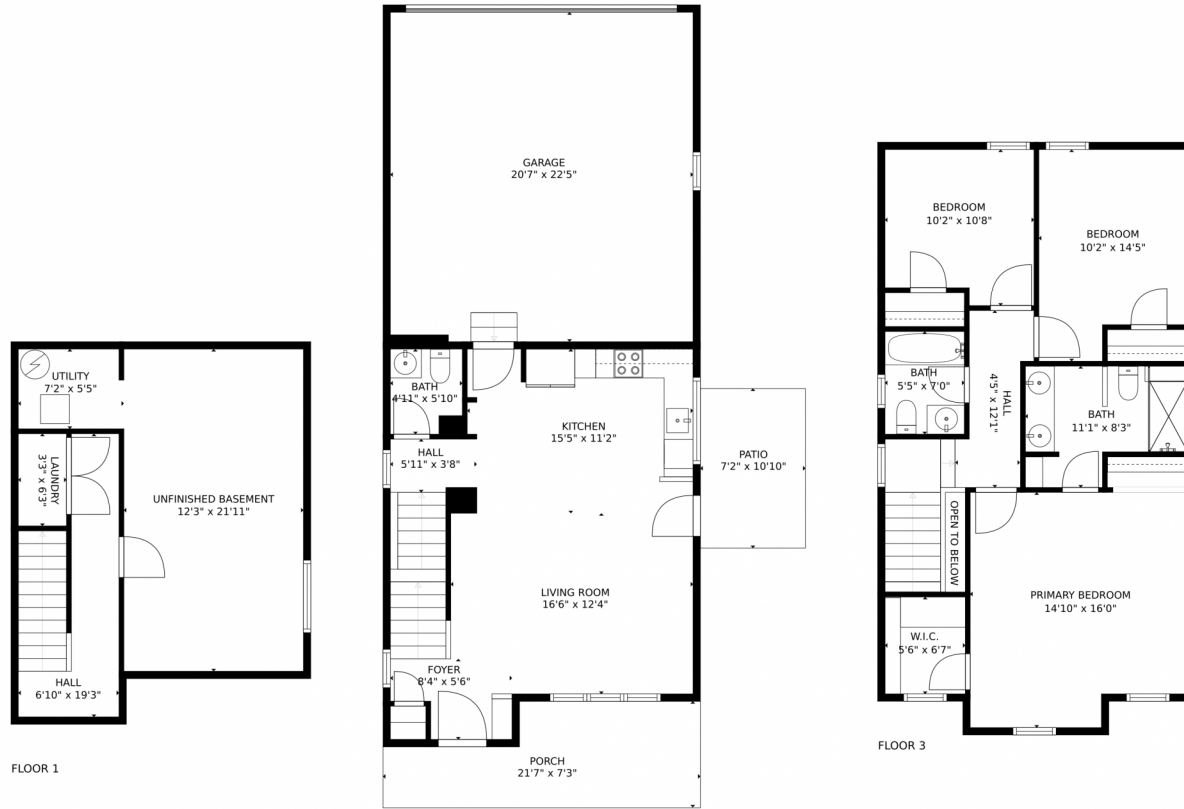


**Taylor Haas**  
303-665-7368  
taylorh@coloradorpm.com  
<https://www.coloradorpm.com/available-rental-properties-denver>





# 4667 Crestone Peak Street, Brighton, CO 80601 – All Levels



FLOOR 1

FLOOR 2

FLOOR 3

GROSS INTERNAL AREA  
FLOOR 1: 179 sq. ft. FLOOR 2: 510 sq. ft.  
FLOOR 3: 776 sq. ft. EXCLUDED AREAS:  
UNFINISHED BASEMENT: 268 sq. ft. GARAGE: 463 sq. ft.  
PATIO: 78 sq. ft. PORCH: 128 sq. ft.  
TOTAL: 1465 sq. ft.  
MEASUREMENTS CALCULATED BY V1Photos.com ARE DEEMED HIGHLY RELIABLE BUT NOT GUARANTEED.



Disclaimer: Sizes and Dimensions are Approximate, Actual May Vary.



**Taylor Haas**  
303-665-7368  
taylorh@coloradorpm.com  
<https://www.coloradorpm.com/available-rental-properties-denver>



Scan code for more property details

