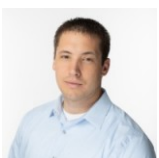


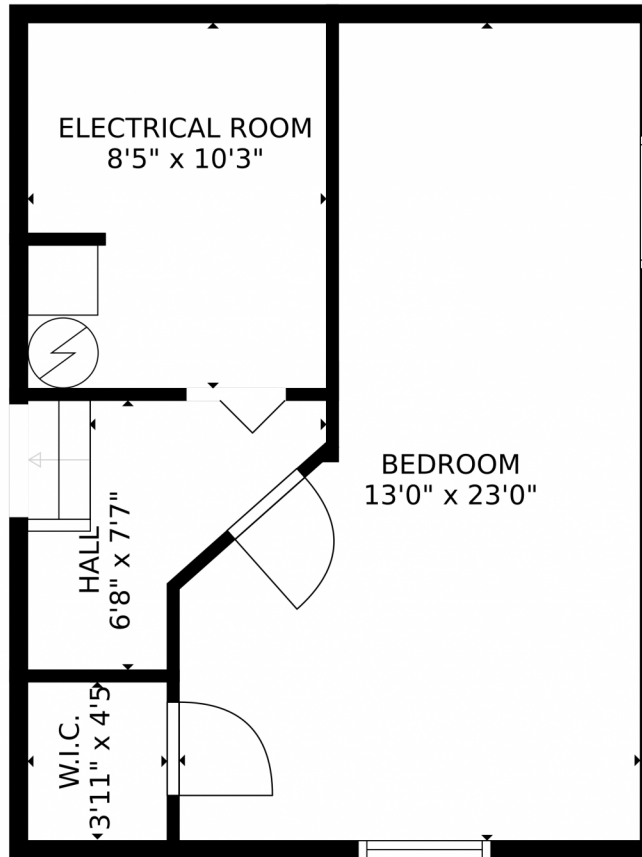
 Single Family  2347 SQFT



Jordan Kermes
952-956-2958
jordan@kermesllc.com



1242 Jet Wing Drive, Colorado Springs, CO 80916 – Lower Level



GROSS INTERNAL AREA
FLOOR 1: 397 sq. ft. FLOOR 2: 604 sq. ft.
FLOOR 3: 983 sq. ft. EXCLUDED AREAS:
GARAGE: 385 sq. ft. PATIO: 247 sq. ft.
BALCONY: 117 sq. ft. DECK: 379 sq. ft.
TOTAL: 1983 sq. ft.
MEASUREMENTS CALCULATED BY V1Photos.com ARE DEEMED HIGHLY RELIABLE BUT NOT GUARANTEED.



Disclaimer: Sizes and Dimensions are Approximate, Actual May Vary.



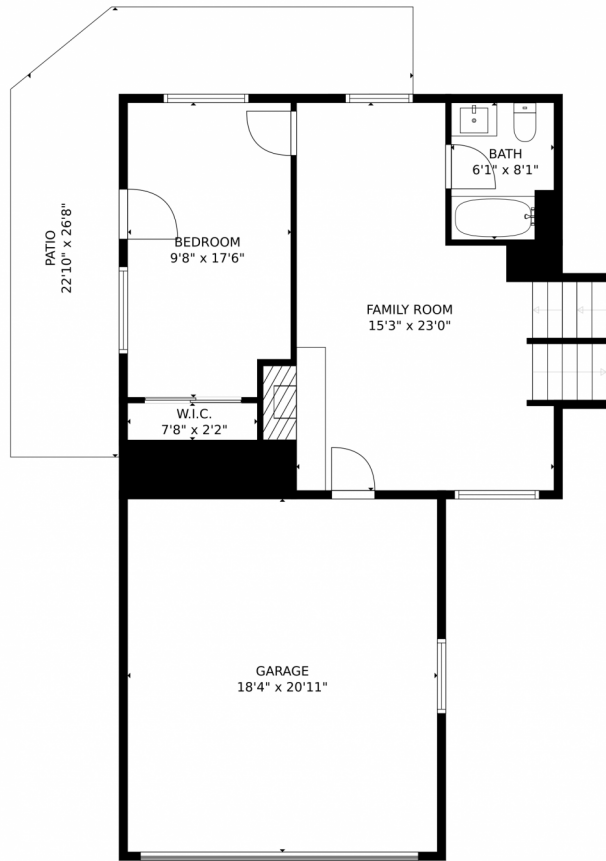
Jordan Kermes
952-956-2958
jordan@kermesllc.com



Scan code for more property details



1242 Jet Wing Drive, Colorado Springs, CO 80916 — First Level



GROSS INTERNAL AREA
FLOOR 1: 397 sq. ft. FLOOR 2: 604 sq. ft.
FLOOR 3: 983 sq. ft. EXCLUDED AREAS:
GARAGE: 385 sq. ft. PATIO: 247 sq. ft.
BALCONY: 117 sq. ft. DECK: 379 sq. ft.
TOTAL: 1983 sq. ft.
MEASUREMENTS CALCULATED BY V1Photos.COM ARE DEEMED HIGHLY RELIABLE BUT NOT GUARANTEED.

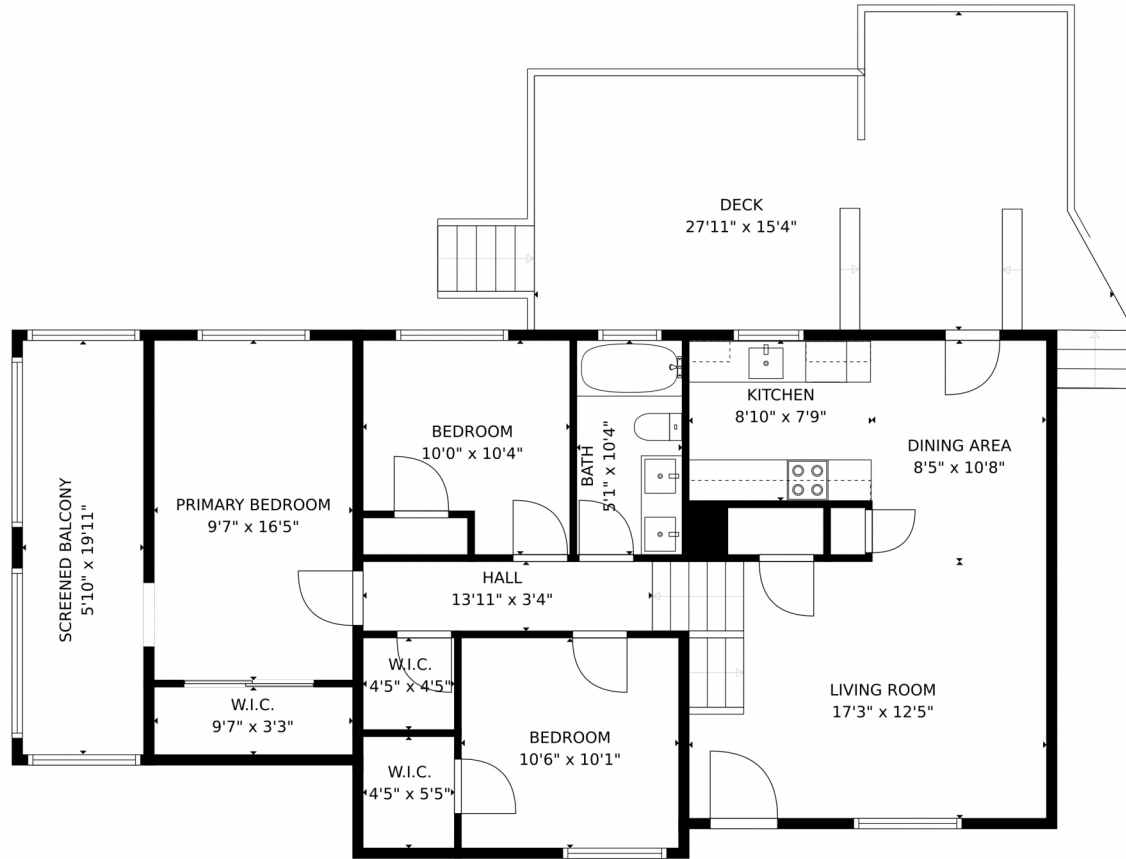
Disclaimer: Sizes and Dimensions are Approximate, Actual May Vary.



Jordan Kermes
952-956-2958
jordan@kermesllc.com



1242 Jet Wing Drive, Colorado Springs, CO 80916 – Second Level



GROSS INTERNAL AREA
FLOOR 1: 397 sq. ft. FLOOR 2: 604 sq. ft.
FLOOR 3: 983 sq. ft. EXCLUDED AREAS:
GARAGE: 385 sq. ft. PATIO: 247 sq. ft.
BALCONY: 117 sq. ft. DECK: 379 sq. ft.
TOTAL: 1983 sq. ft.
MEASUREMENTS CALCULATED BY V1Photos.com ARE DEEMED HIGHLY RELIABLE BUT NOT GUARANTEED.



Disclaimer: Sizes and Dimensions are Approximate, Actual May Vary.



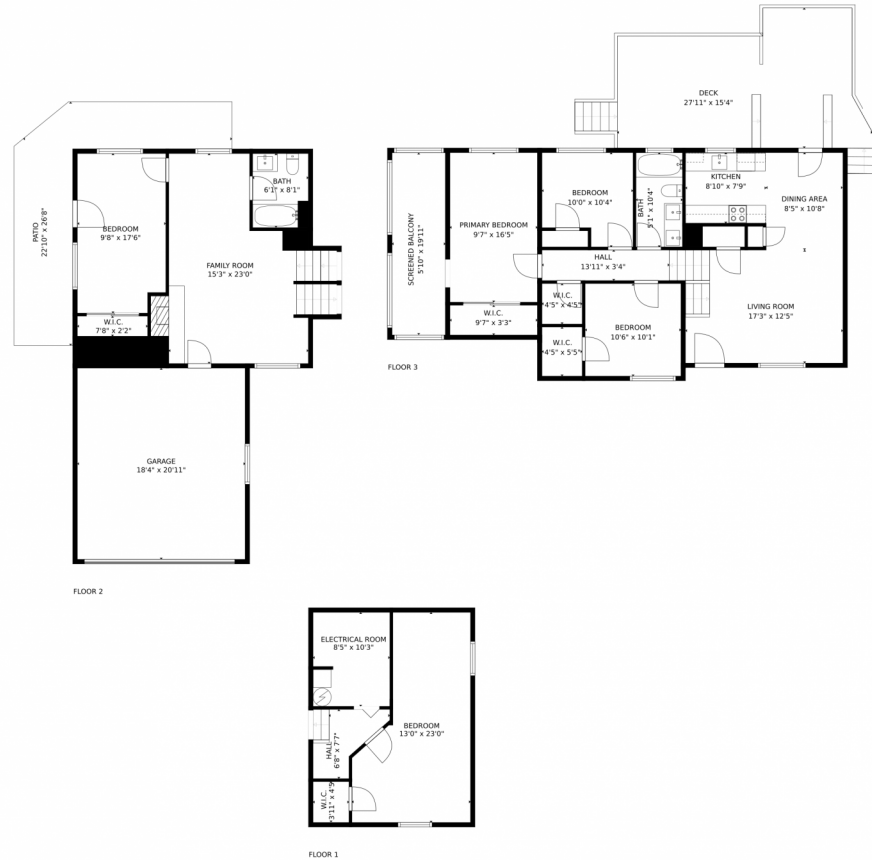
Jordan Kermes
952-956-2958
jordan@kermesllc.com



Scan code for more property details



1242 Jet Wing Drive, Colorado Springs, CO 80916 — All Levels



GROSS INTERNAL AREA
FLOOR 1: 397 sq. ft. FLOOR 2: 604 sq. ft.
FLOOR 3: 983 sq. ft. EXCLUDED AREAS:
GARAGE: 385 sq. ft. PATIO: 247 sq. ft.
BALCONY: 117 sq. ft. DECK: 379 sq. ft.
TOTAL: 1983 sq. ft.
MEASUREMENTS CALCULATED BY V1Photos.com ARE DEEMED HIGHLY RELIABLE BUT NOT GUARANTEED.



Disclaimer: Sizes and Dimensions are Approximate, Actual May Vary.



Jordan Kermes
952-956-2958
jordan@kermesllc.com

