




6575 Coldwater Drive
Parker, CO 80134
COMMUNITY: Stone Creek Ranch

MLS # 8566819




 Single Family

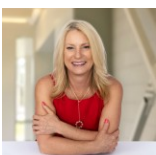
 3313 SQFT

 5 Beds

 3 Baths

 3 Car

 0.24 Acre

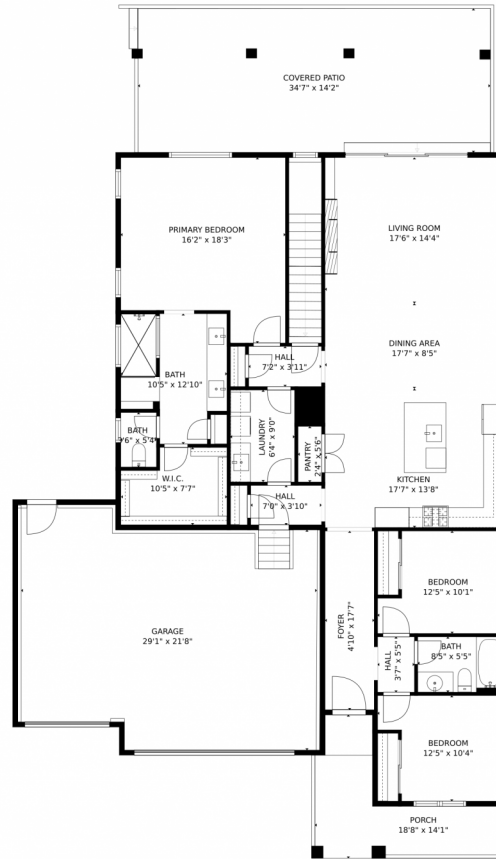


Mandi Mullin
303-726-3992
mandisellshomes2020@gmail.com



Scan code
for more
property
details

6575 Coldwater Drive, Parker, CO 80134 – Main Level



GROSS INTERNAL AREA
FLOOR 1: 1692 sq. ft, FLOOR 2: 1788 sq. ft
EXCLUDED AREAS: , GARAGE: 637 sq. ft
PATIO: 490 sq. ft, PORCH: 142 sq. ft
TOTAL: 3480 sq. ft

MEASUREMENTS CALCULATED BY V1Photos.com ARE DEEMED HIGHLY RELIABLE BUT NOT GUARANTEED.



Disclaimer: Sizes and Dimensions are Approximate, Actual May Vary.



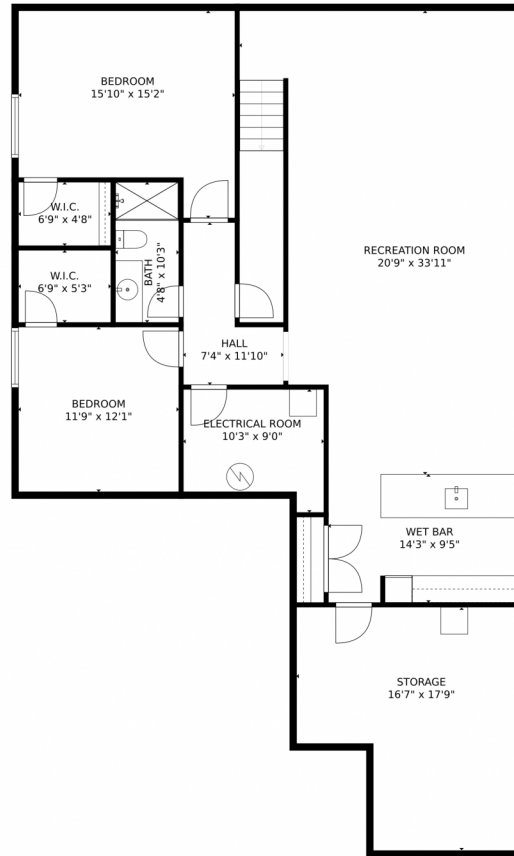
Mandi Mullin
303-726-3992
mandisellshomes2020@gmail.com



Scan code
for more
property
details



6575 Coldwater Drive, Parker, CO 80134 — Basement



GROSS INTERNAL AREA
FLOOR 1: 1692 sq. ft., FLOOR 2: 1788 sq. ft.
EXCLUDED AREAS: , GARAGE: 637 sq. ft.
PATIO: 490 sq. ft., PORCH: 142 sq. ft.
TOTAL: 3480 sq. ft.
MEASUREMENTS CALCULATED BY V1Photos.com ARE DEEMED HIGHLY RELIABLE BUT NOT GUARANTEED.



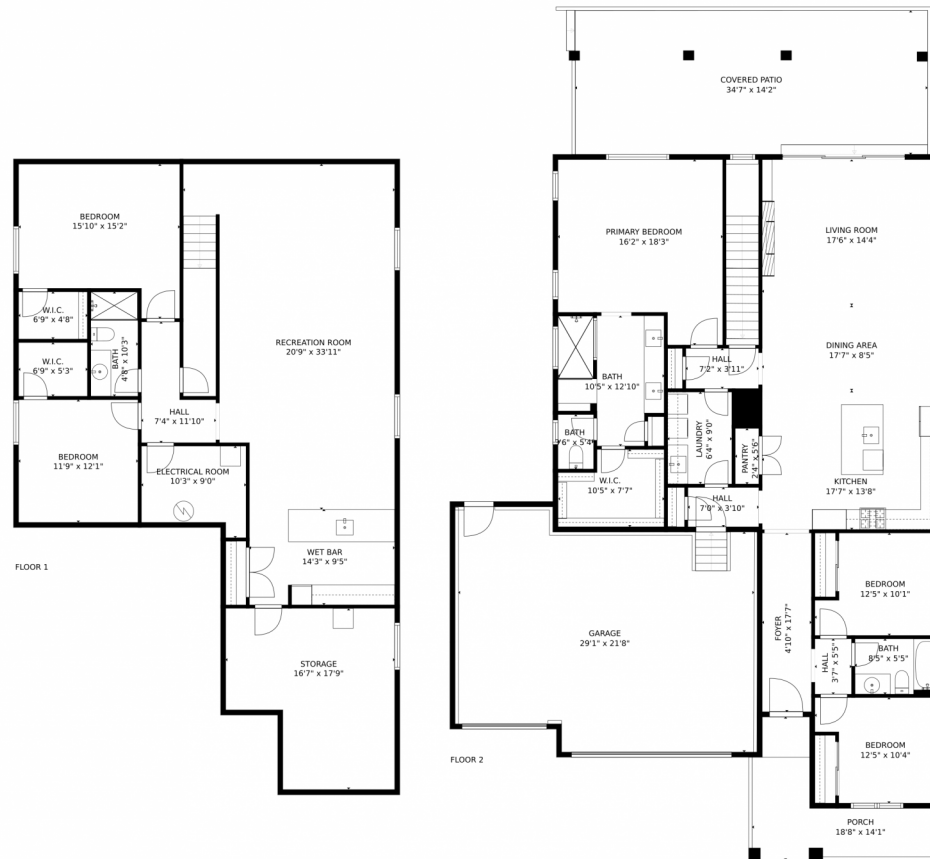
Disclaimer: Sizes and Dimensions are Approximate, Actual May Vary.



Mandi Mullin
303-726-3992
mandisellshomes2020@gmail.com



6575 Coldwater Drive, Parker, CO 80134 – All Levels



GROSS INTERNAL AREA
FLOOR 1: 1692 sq. ft, FLOOR 2: 1788 sq. ft
EXCLUDED AREAS: , GARAGE: 637 sq. ft
PATIO: 490 sq. ft, PORCH: 142 sq. ft
TOTAL: 3480 sq. ft
MEASUREMENTS CALCULATED BY V1Photos.com ARE DEEMED HIGHLY RELIABLE BUT NOT GUARANTEED.



Disclaimer: Sizes and Dimensions are Approximate, Actual May Vary.



Mandi Mullin
303-726-3992
mandisellshomes2020@gmail.com

