



 Single Family
  2135 SQFT
  4 Beds
  3/1 Baths
  2 Car

## PROPERTY DETAILS

Bright well maintained split level home is updated through out. The upper level features an open floor plan with primary bedroom complete with walk-in closet and 5 piece bath. Kitchen has new countertop and includes newer refrigerator, stove, microwave and dishwasher. Kitchen opens to a great room with gas fireplace insert and sliding door to patio, perfect for grilling. Garden level features 2 bright large bedrooms full updated bathroom and laundry, washer and dryer are included, and access to the fully fenced in backyard. The lower level is finished. It would be a great media/movie room. This level also has a bedroom and updated 3/4 bathroom.

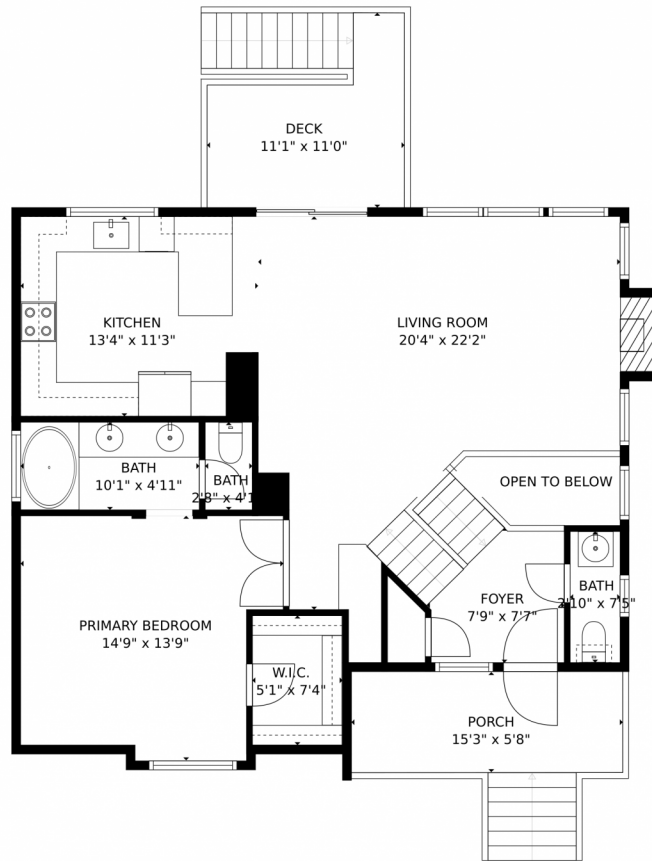
This home is move in ready. Don't miss your chance to live in beautiful Parker Colorado.



**Ken Clark**  
303-619-4656  
ken@mscadvisors.com



# 8459 SWEET CLOVER WAY, PARKER, CO 80134 – Main Level



GROSS INTERNAL AREA  
FLOOR 1: 622 sq. ft. FLOOR 2: 555 sq. ft.  
FLOOR 3: 915 sq. ft. EXCLUDED AREAS:  
GARAGE: 349 sq. ft. DECK: 88 sq. ft.  
PORCH: 87 sq. ft.  
TOTAL: 2092 sq. ft.

MEASUREMENTS CALCULATED BY V1Photos.COM ARE DEEMED HIGHLY RELIABLE BUT NOT GUARANTEED.



Disclaimer: Sizes and Dimensions are Approximate, Actual May Vary.



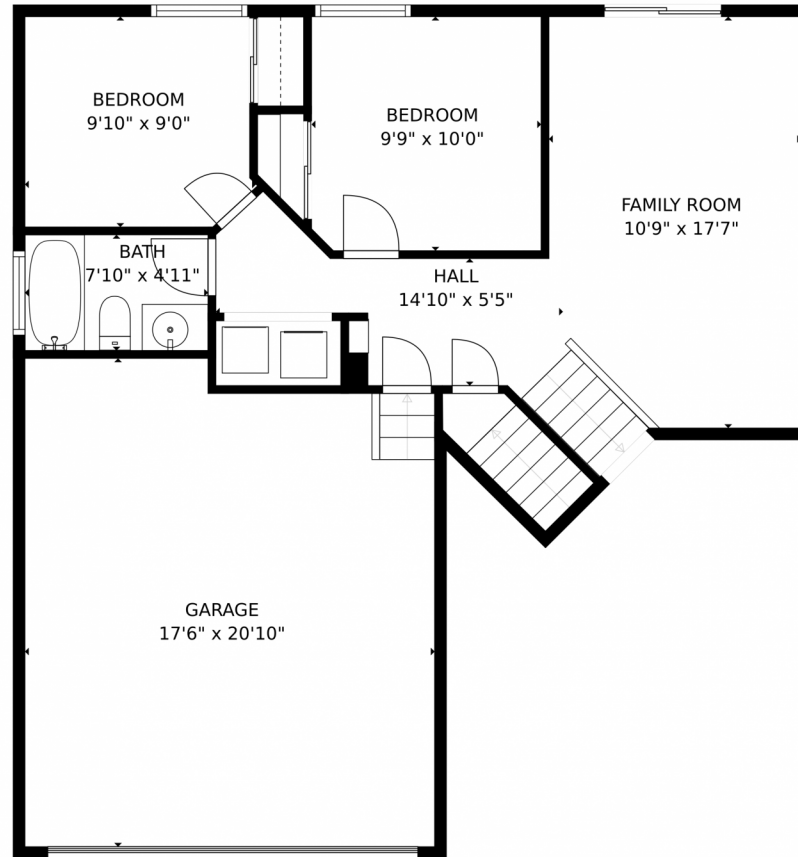
**Ken Clark**  
303-619-4656  
ken@mscadvisors.com



Scan code  
for more  
property  
details



# 8459 SWEET CLOVER WAY, PARKER, CO 80134 – Lower Level



GROSS INTERNAL AREA  
FLOOR 1: 622 sq. ft. FLOOR 2: 555 sq. ft.  
FLOOR 3: 915 sq. ft. EXCLUDED AREAS:  
GARAGE: 349 sq. ft. DECK: 88 sq. ft.  
PORCH: 87 sq. ft.  
TOTAL: 2092 sq. ft.

MEASUREMENTS CALCULATED BY V1Photos.COM ARE DEEMED HIGHLY RELIABLE BUT NOT GUARANTEED.

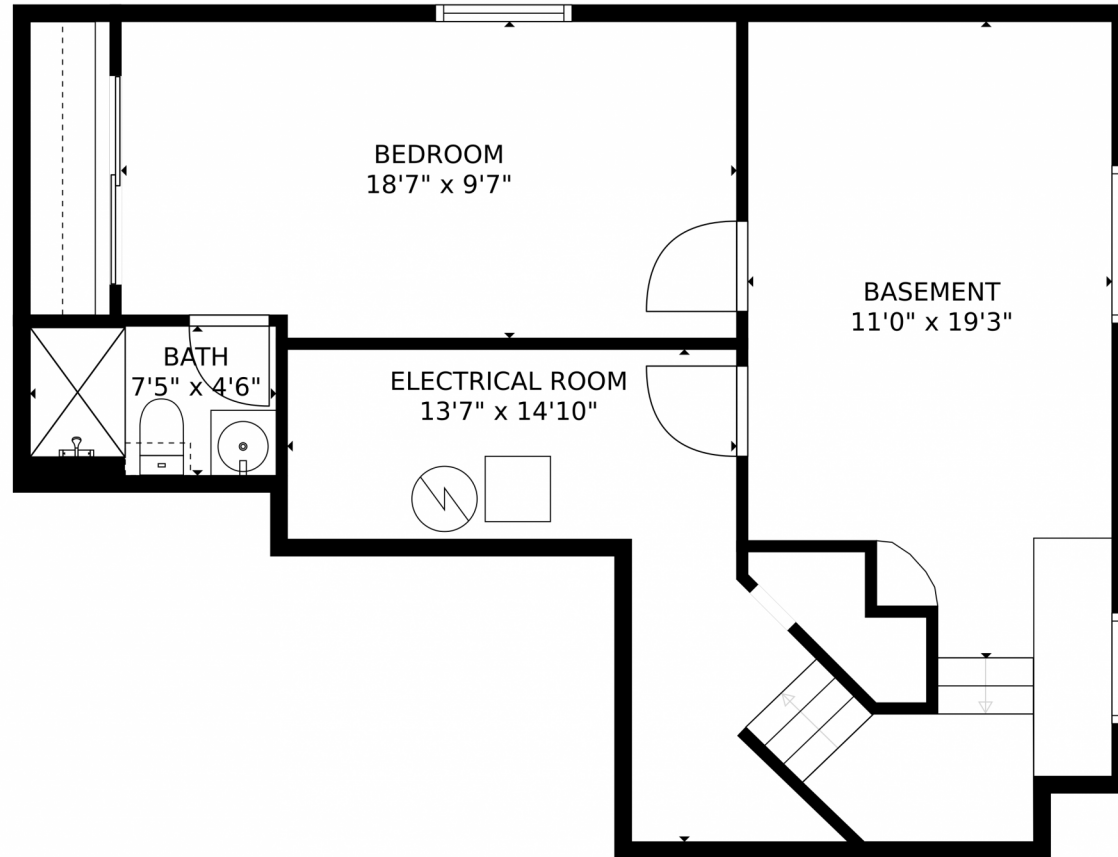


Disclaimer: Sizes and Dimensions are Approximate, Actual May Vary.



**Ken Clark**  
303-619-4656  
ken@mscadvisors.com





GROSS INTERNAL AREA  
FLOOR 1: 622 sq. ft. FLOOR 2: 555 sq. ft.  
FLOOR 3: 915 sq. ft. EXCLUDED AREAS:  
GARAGE: 349 sq. ft. DECK: 88 sq. ft.  
PORCH: 87 sq. ft.  
TOTAL: 2092 sq. ft.

MEASUREMENTS CALCULATED BY V1Photos.COM ARE DEEMED HIGHLY RELIABLE BUT NOT GUARANTEED.



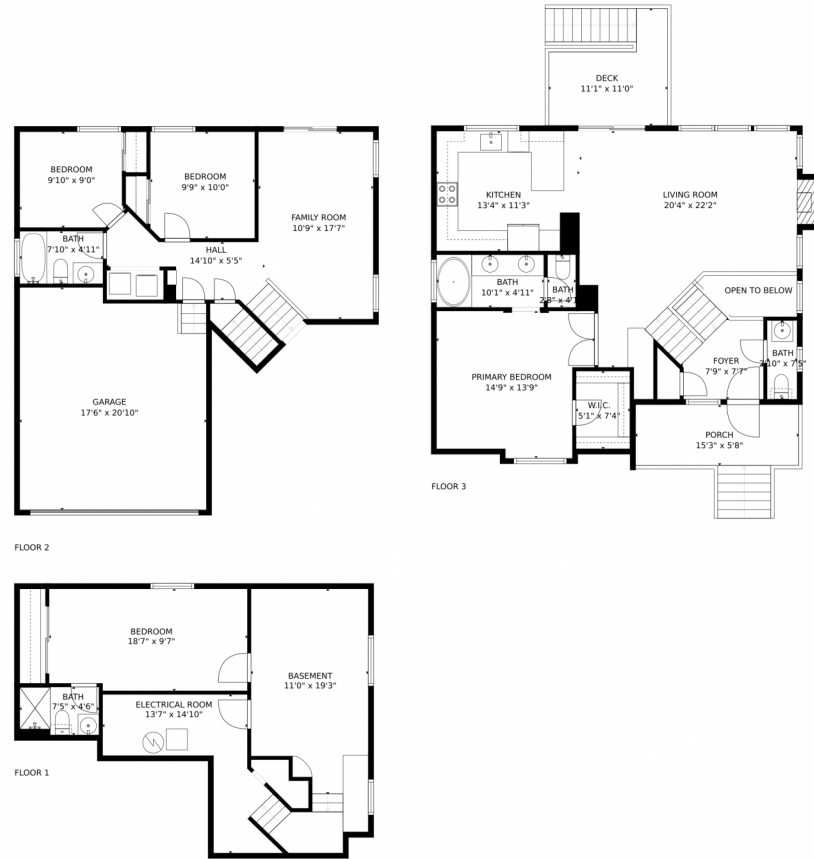
Disclaimer: Sizes and Dimensions are Approximate, Actual May Vary.



**Ken Clark**  
303-619-4656  
ken@mscadvisors.com



8459 SWEET CLOVER WAY, PARKER, CO 80134 – all\_floors\_dimensions\_8459\_sweet\_clover\_way\_\_\_park



GROSS INTERNAL AREA  
FLOOR 1: 622 sq. ft. FLOOR 2: 555 sq. ft  
FLOOR 3: 915 sq. ft. EXCLUDED AREAS:  
GARAGE: 349 sq. ft. DECK: 88 sq. ft  
PORCH: 87 sq. ft  
TOTAL: 2092 sq. ft

MEASUREMENTS CALCULATED BY V1Photos.COM ARE DEEMED HIGHLY RELIABLE BUT NOT GUARANTEED.



Disclaimer: Sizes and Dimensions are Approximate, Actual May Vary.



**Ken Clark**  
303-619-4656  
ken@mscadvisors.com



Scan code  
for more  
property  
details

