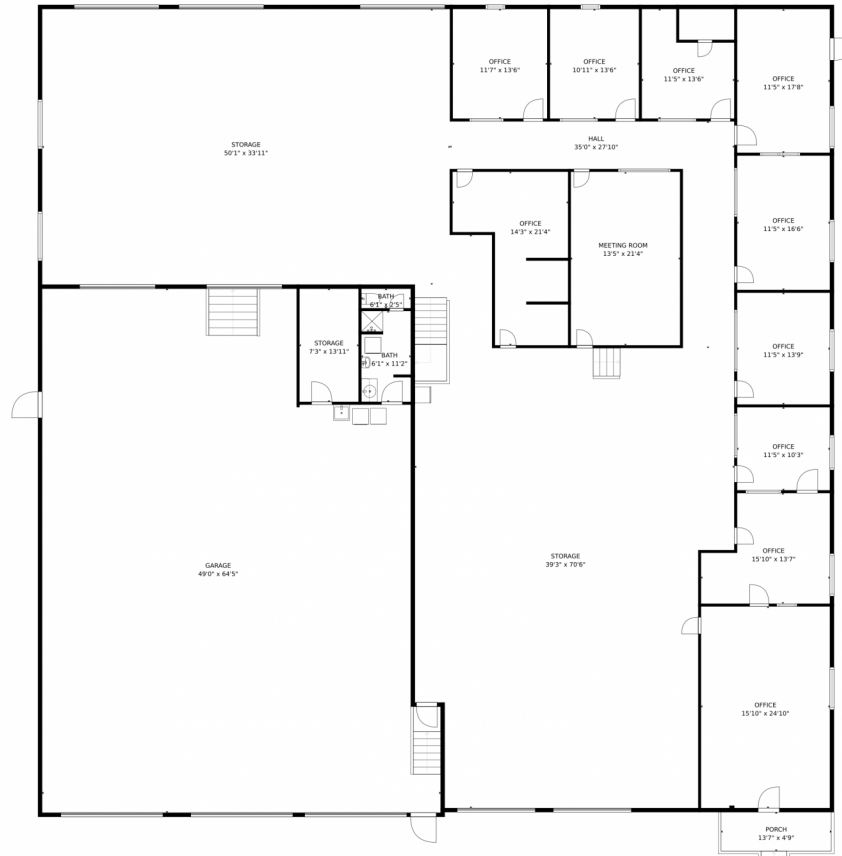


4870 Newport Street, Commerce City, CO 80022 – Main



GROSS INTERNAL AREA
FLOOR 1: 6710 sq. ft, FLOOR 2: 831 sq. ft
EXCLUDED AREAS: , GARAGE: 2769 sq. ft
PORCH: 65 sq. ft
TOTAL: 7541 sq. ft
MEASUREMENTS CALCULATED BY V1Photos.COM ARE DEEMED HIGHLY RELIABLE BUT NOT GUARANTEED.

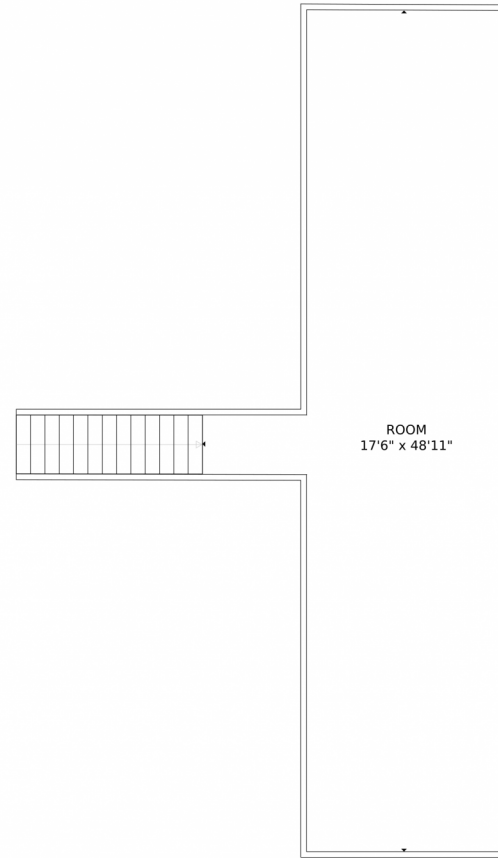
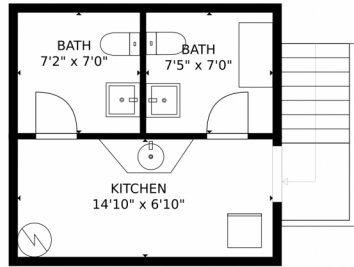


Disclaimer: Sizes and Dimensions are Approximate, Actual May Vary.

Aviva Sonenreich
720-276-2717
aviva@warehousehotline.com



4870 Newport Street, Commerce City, CO 80022 – Mezzanine



GROSS INTERNAL AREA
FLOOR 1: 6710 sq. ft, FLOOR 2: 831 sq. ft
EXCLUDED AREAS: , GARAGE: 2769 sq. ft
PORCH: 65 sq. ft
TOTAL: 7541 sq. ft

MEASUREMENTS CALCULATED BY V1Photos.com ARE DEEMED HIGHLY RELIABLE BUT NOT GUARANTEED.



Disclaimer: Sizes and Dimensions are Approximate, Actual May Vary.

Aviva Sonenreich
720-276-2717
aviva@warehousehotline.com



4870 Newport Street, Commerce City, CO 80022 – All Levels



GROSS INTERNAL AREA
FLOOR 1: 6710 sq. ft, FLOOR 2: 831 sq. ft
EXCLUDED AREAS: , GARAGE: 2769 sq. ft
PORCH: 65 sq. ft
TOTAL: 7541 sq. ft

MEASUREMENTS CALCULATED BY V1Photos.COM ARE DEEMED HIGHLY RELIABLE BUT NOT GUARANTEED.



Disclaimer: Sizes and Dimensions are Approximate, Actual May Vary.

Aviva Sonenreich
720-276-2717
aviva@warehousehotline.com

