





11767 Pleasant View Ridge
Longmont, CO 80504
COMMUNITY: Elms at Meadow Vale




 Single Family

 4979 SQFT

 5 Beds

 2/1 Baths

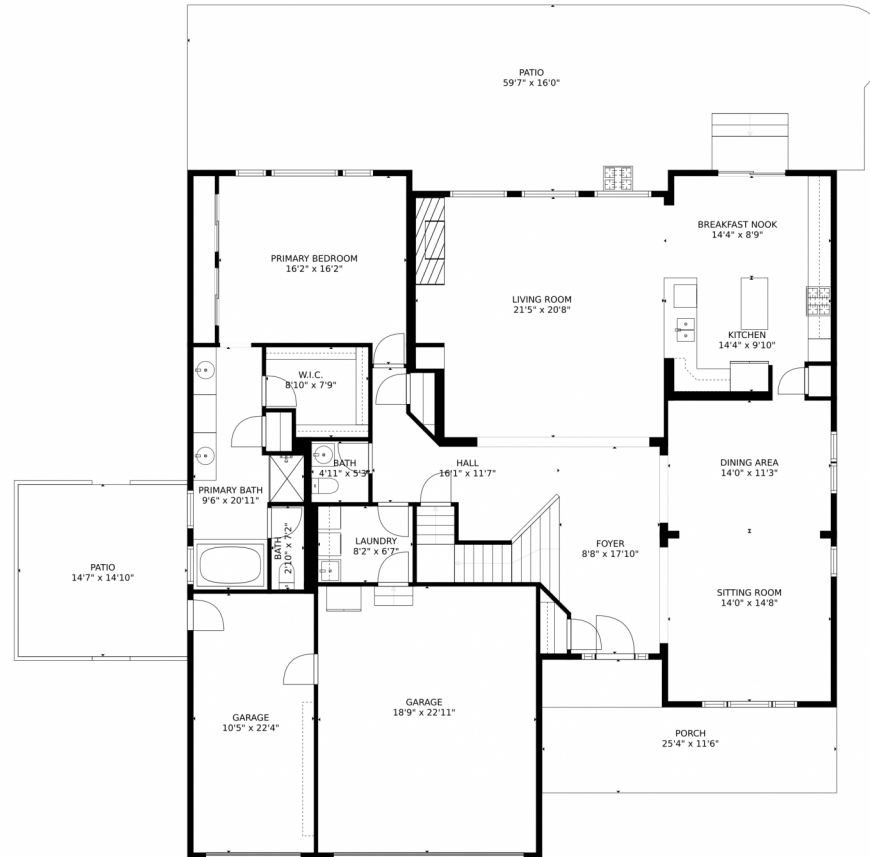
 0.24 Acre



Tina Kulp
303-489-6876
tinakulp.tk@gmail.com
<http://lifedesignsrealestate.com>



11767 Pleasant View Ridge, Longmont, CO 80504 – Main Level



GROSS INTERNAL AREA
FLOOR 1: 1984 sq. ft. FLOOR 2: 2097 sq. ft.
FLOOR 3: 1621 sq. ft. EXCLUDED AREAS:
GARAGE: 663 sq. ft. PATIO: 1091 sq. ft.
PORCH: 230 sq. ft.
TOTAL: 5701 sq. ft.

MEASUREMENTS CALCULATED BY V1Photos.COM ARE DEEMED HIGHLY RELIABLE BUT NOT GUARANTEED.



Disclaimer: Sizes and Dimensions are Approximate, Actual May Vary.



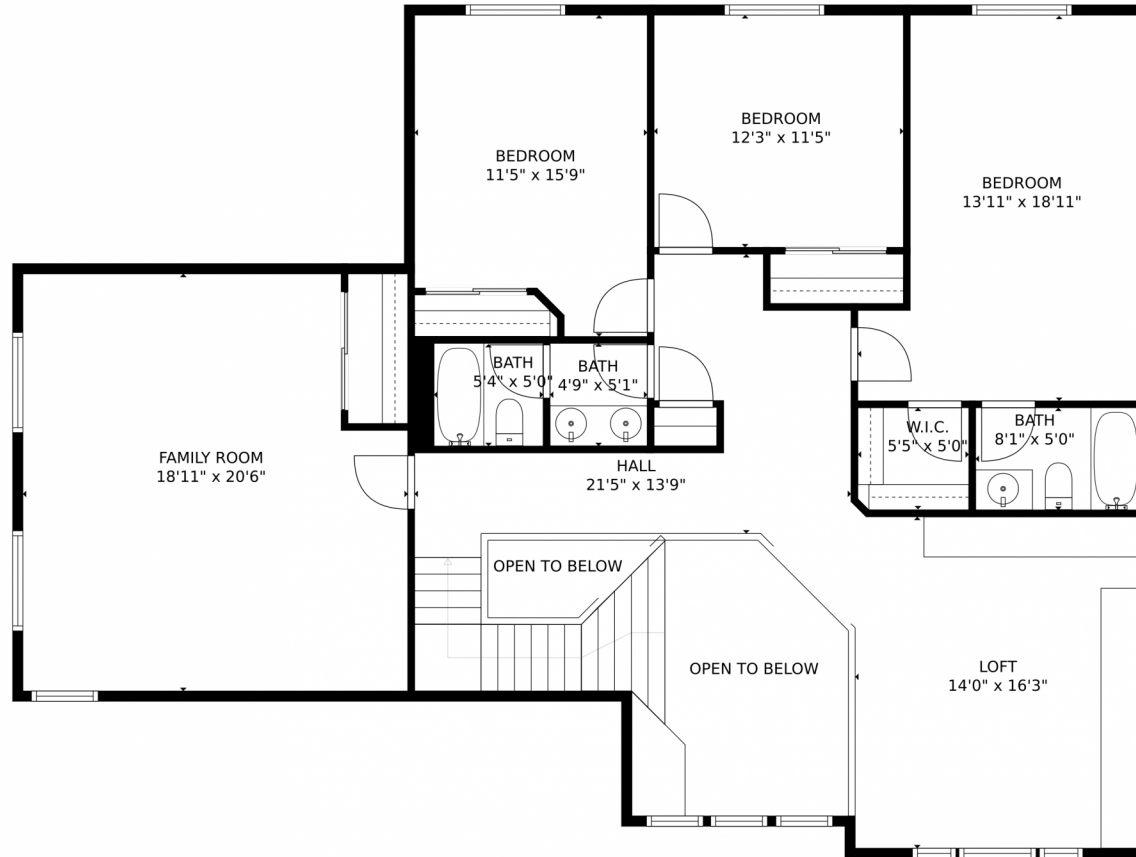
Tina Kulp
303-489-6876
tinakulp.tk@gmail.com
<http://lifedesignsrealestate.com>



Scan code
for more
property
details



11767 Pleasant View Ridge, Longmont, CO 80504 – Upper Level



GROSS INTERNAL AREA
FLOOR 1: 1984 sq. ft. FLOOR 2: 2097 sq. ft.
FLOOR 3: 1621 sq. ft. EXCLUDED AREAS:
GARAGE: 663 sq. ft. PATIO: 1091 sq. ft.
PORCH: 230 sq. ft.
TOTAL: 5701 sq. ft.
MEASUREMENTS CALCULATED BY V1Photos.COM ARE DEEMED HIGHLY RELIABLE BUT NOT GUARANTEED.



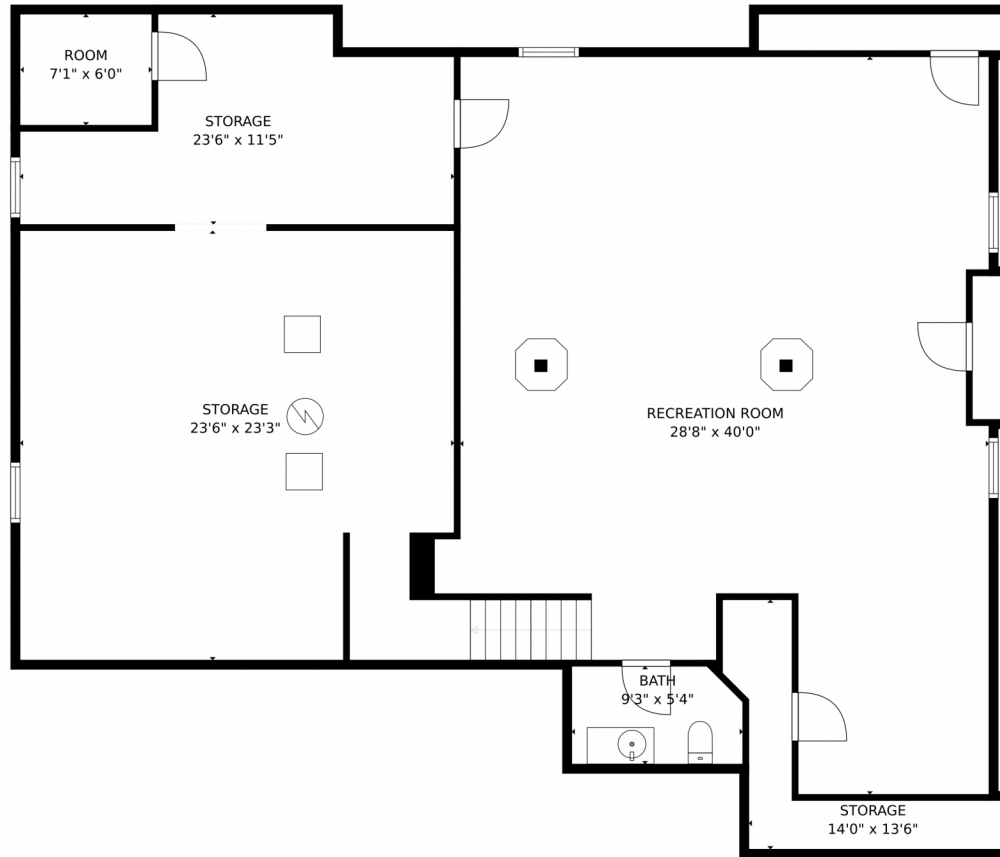
Disclaimer: Sizes and Dimensions are Approximate, Actual May Vary.



Tina Kulp
303-489-6876
tinakulp.tk@gmail.com
<http://lifedesignsrealestate.com>



11767 Pleasant View Ridge, Longmont, CO 80504 – Lower Level



GROSS INTERNAL AREA
FLOOR 1: 1984 sq. ft. FLOOR 2: 2097 sq. ft.
FLOOR 3: 1621 sq. ft. EXCLUDED AREAS:
GARAGE: 663 sq. ft. PATIO: 1091 sq. ft.
PORCH: 230 sq. ft.
TOTAL: 5701 sq. ft.

MEASUREMENTS CALCULATED BY V1Photos.COM ARE DEEMED HIGHLY RELIABLE BUT NOT GUARANTEED.



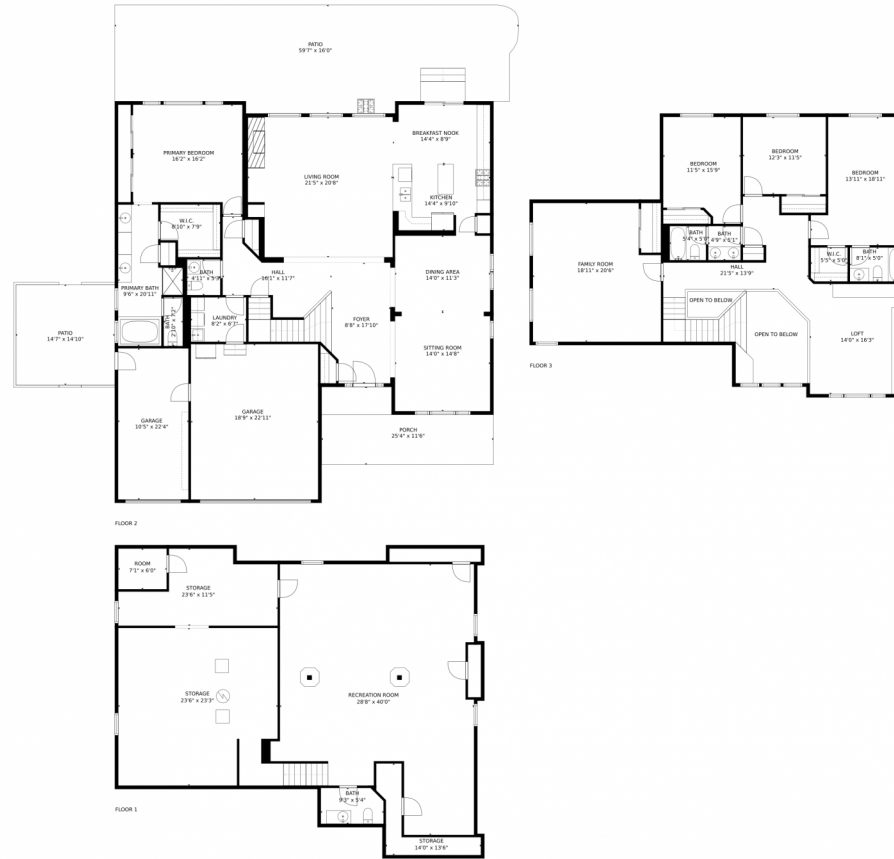
Disclaimer: Sizes and Dimensions are Approximate, Actual May Vary.



Tina Kulp
303-489-6876
tinakulp.tk@gmail.com
<http://lifedesignsrealestate.com>



11767 Pleasant View Ridge, Longmont, CO 80504 – All Levels



GROSS INTERNAL AREA
FLOOR 1: 1984 sq. ft. FLOOR 2: 2097 sq. ft.
FLOOR 3: 1621 sq. ft. EXCLUDED AREAS:
GARAGE: 663 sq. ft. PATIO: 1091 sq. ft.
PORCH: 230 sq. ft.
TOTAL: 5701 sq. ft.

MEASUREMENTS CALCULATED BY V1Photos.COM ARE DEEMED HIGHLY RELIABLE BUT NOT GUARANTEED.



Disclaimer: Sizes and Dimensions are Approximate, Actual May Vary.



Tina Kulp
303-489-6876
tinakulp.tk@gmail.com
<http://lifedesignsrealestate.com>



Scan code
for more
property
details

