



8253 Stags Leap Trail
 Morrison, CO 80465
 COMMUNITY: Homestead

PRICE \$1,599,000

Completion July 1, 2023.



Single Family



3553 SQFT



5 Beds



4/1 Baths



4 Car



2.1 Acre

PROPERTY DETAILS

The heart of this home lies in the gourmet kitchen, featuring high end appliances. The expansive 13-foot island provides ample space for culinary masterpieces & gathering with loved ones. Cozy up by the 63" gas fireplace in the spacious living area, creating an inviting ambiance for relaxation & entertainment. The 16' bifold door creates an inviting indoor-outdoor living experience. Enjoy the convenience of multiple decks, perfect for entertaining or simply taking in the breathtaking views. Indulge in the mountain modern bathroom design, where elegance meets functionality. The luxurious steam shower offers a spa-like experience, while the enormous primary closet is a dream come true for the fashionista. The 4 car garage provide convenience & flexibility for all your storage needs. The warmth of beautiful hardwood floors throughout with attention to detail is evident in every corner, from the closed cell insulation that ensures optimal energy efficiency to the insulated midfloor & interior walls that provide superior soundproofing. Tour with the builder today & make this dream home your reality.



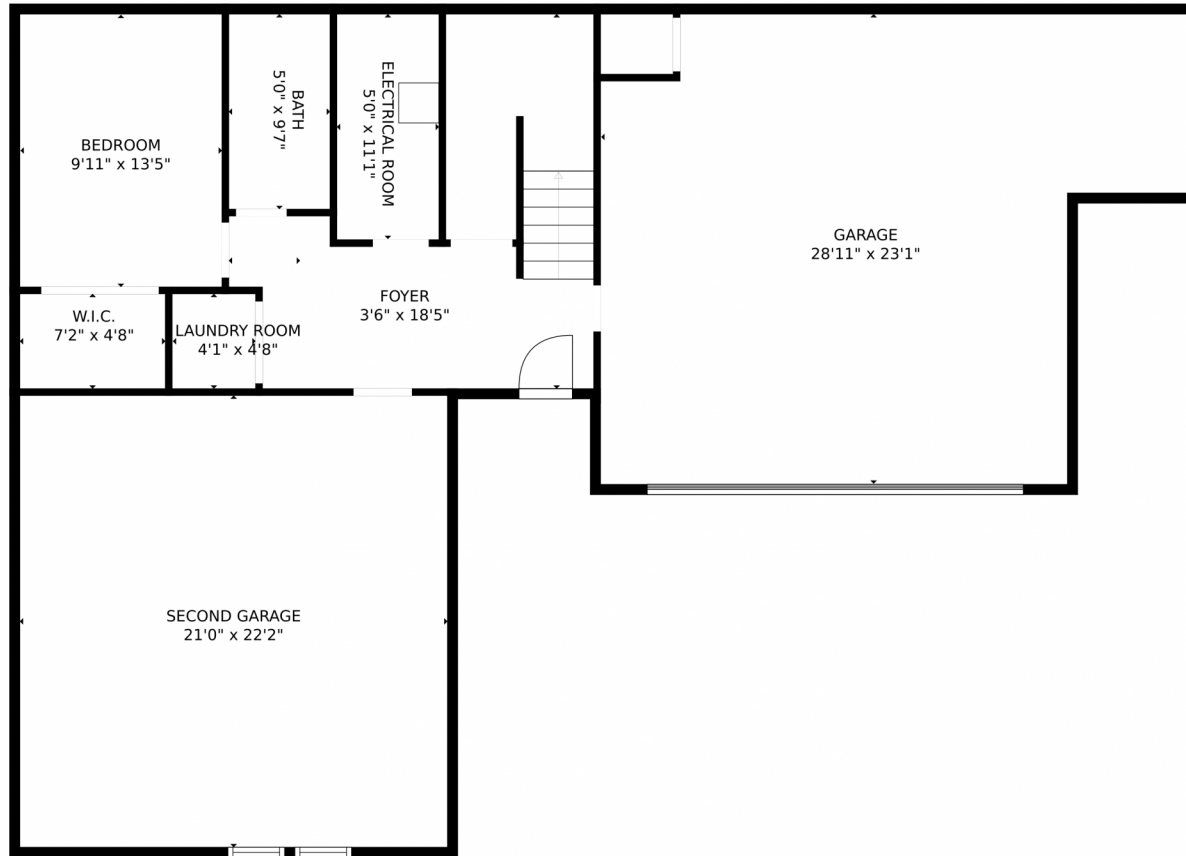
Matthew Lutz
 720-448-3822
 matthew.f.lutz@gmail.com



Scan code
 for more
 property
 details



8253 Stags Leap Trail, Morrison, CO 80465 – First Level



GROSS INTERNAL AREA
FLOOR 1: 1003 sq. ft. FLOOR 2: 1713 sq. ft.
FLOOR 3: 1478 sq. ft. EXCLUDED AREAS:
GARAGE: 570 sq. ft. DECK: 36 sq. ft.
TOTAL: 4194 sq. ft.
MEASUREMENTS CALCULATED BY V1Photos.com ARE DEEMED HIGHLY RELIABLE BUT NOT GUARANTEED.



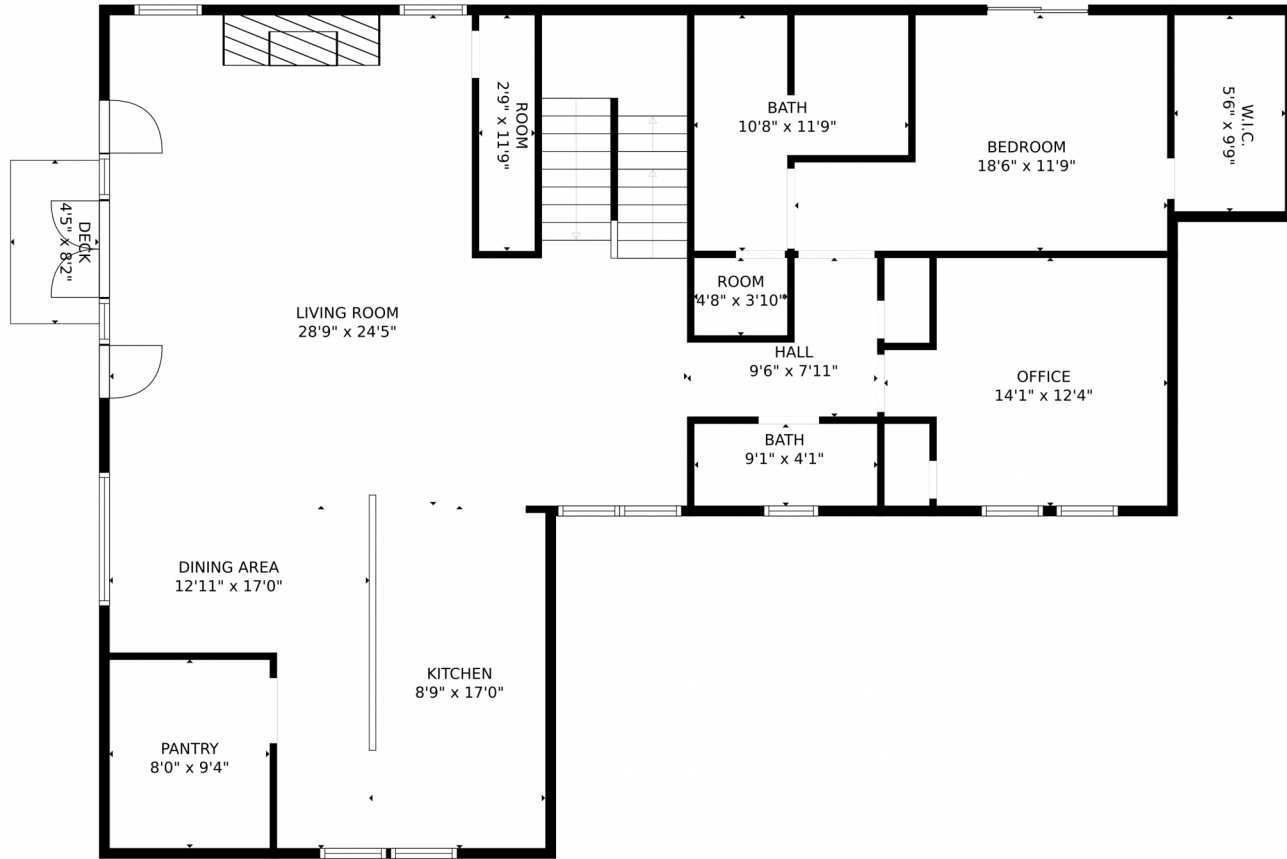
Disclaimer: Sizes and Dimensions are Approximate, Actual May Vary.



Matthew Lutz
720-448-3822
matthew.f.lutz@gmail.com



8253 Stags Leap Trail, Morrison, CO 80465 – Main Level



GROSS INTERNAL AREA
FLOOR 1: 1003 sq. ft., FLOOR 2: 1713 sq. ft.
FLOOR 3: 1478 sq. ft., EXCLUDED AREAS:
GARAGE: 570 sq. ft., DECK: 36 sq. ft.
TOTAL: 4194 sq. ft.
MEASUREMENTS CALCULATED BY V1Photos.COM ARE DEEMED HIGHLY RELIABLE BUT NOT GUARANTEED.



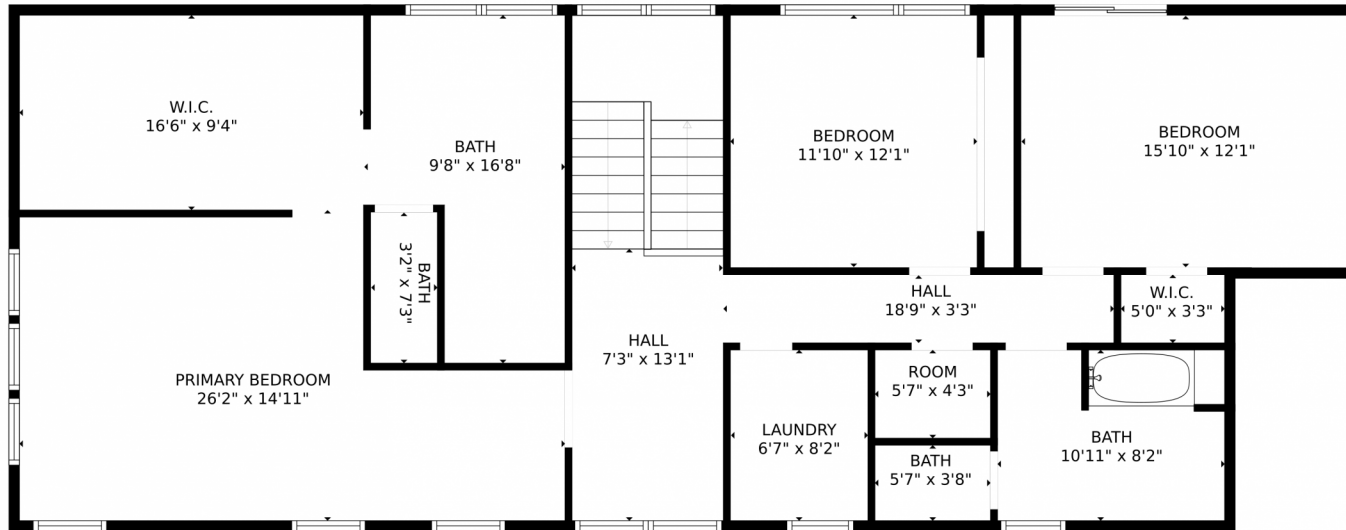
Disclaimer: Sizes and Dimensions are Approximate, Actual May Vary.



Matthew Lutz
720-448-3822
matthew.f.lutz@gmail.com



8253 Stags Leap Trail, Morrison, CO 80465 – Third Level



GROSS INTERNAL AREA
FLOOR 1: 1003 sq. ft, FLOOR 2: 1713 sq. ft
FLOOR 3: 1478 sq. ft, EXCLUDED AREAS:
GARAGE: 570 sq. ft, DECK: 36 sq. ft
TOTAL: 4194 sq. ft
MEASUREMENTS CALCULATED BY V1Photos.com ARE DEEMED HIGHLY RELIABLE BUT NOT GUARANTEED.



Disclaimer: Sizes and Dimensions are Approximate, Actual May Vary.



Matthew Lutz
720-448-3822
matthew.f.lutz@gmail.com



8253 Stags Leap Trail, Morrison, CO 80465 – All Levels



GROSS INTERNAL AREA
 Below Ground: 445 sq. ft, FLOOR 2: 1576 sq. ft, FLOOR 3: 1351 sq. ft
 EXCLUDED AREAS: UNDEFINED: 15 sq. ft, ELECTRICAL ROOM: 66 sq. ft, GARAGE: 1007 sq. ft,
 PORCH: 32 sq. ft, STORAGE: 53 sq. ft, DECK: 256 sq. ft,
 BALCONY: 21 sq. ft
 TOTAL: 3372 sq. ft
 MEASUREMENTS CALCULATED BY V1Photos.COM ARE DEEMED HIGHLY RELIABLE BUT NOT GUARANTEED.



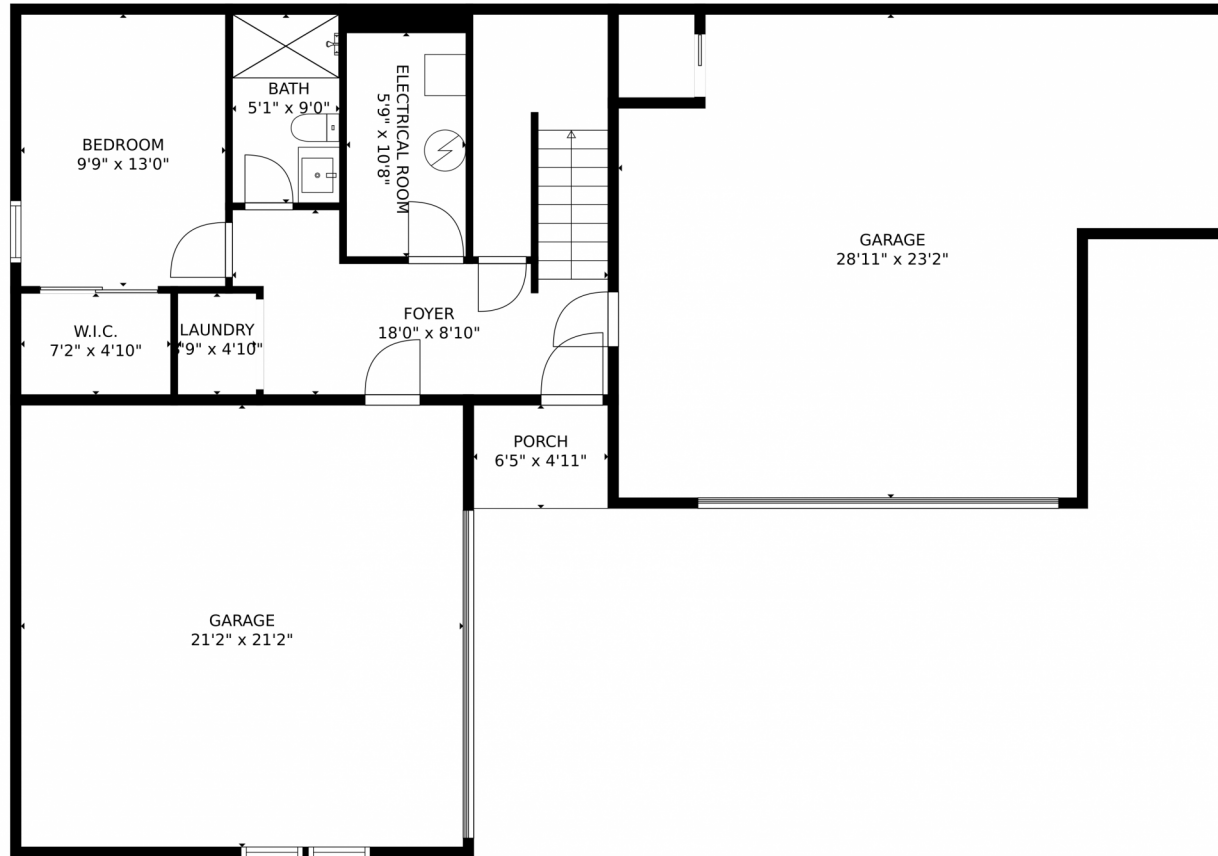
Disclaimer: Sizes and Dimensions are Approximate, Actual May Vary.



Matthew Lutz
 720-448-3822
 matthew.f.lutz@gmail.com



8253 Stags Leap Trail, Morrison, CO 80465 – Lower Level



GROSS INTERNAL AREA
Below Ground: 445 sq. ft, FLOOR 2: 1576 sq. ft, FLOOR 3: 1351 sq. ft
EXCLUDED AREAS: UNDEFINED: 15 sq. ft, ELECTRICAL ROOM: 66 sq. ft, GARAGE: 1007 sq. ft,
PORCH: 32 sq. ft, STORAGE: 53 sq. ft, DECK: 256 sq. ft,
BALCONY: 21 sq. ft
TOTAL: 3372 sq. ft
MEASUREMENTS CALCULATED BY V1Photos.COM ARE DEEMED HIGHLY RELIABLE BUT NOT GUARANTEED.



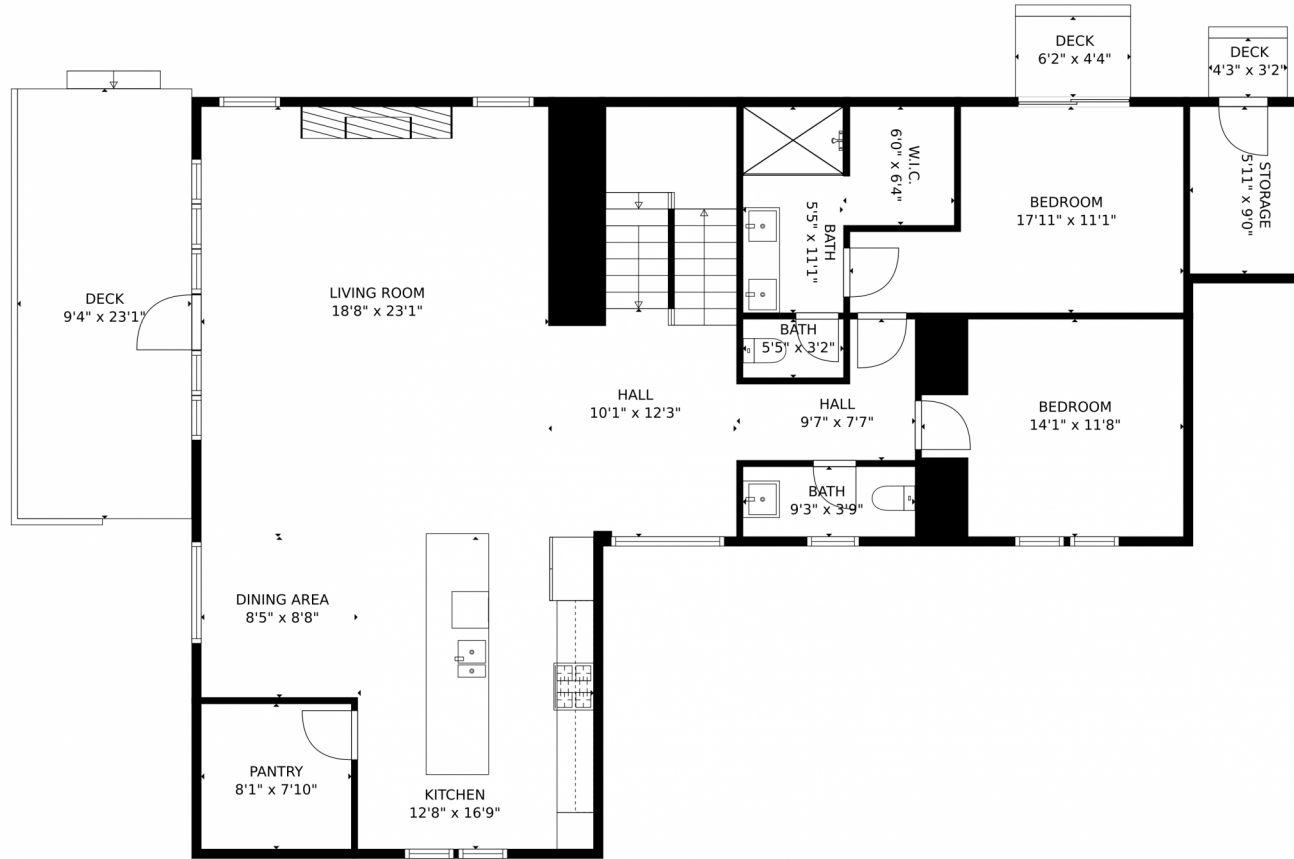
Disclaimer: Sizes and Dimensions are Approximate, Actual May Vary.



Matthew Lutz
720-448-3822
matthew.f.lutz@gmail.com



8253 Stags Leap Trail, Morrison, CO 80465 – Main Level



GROSS INTERNAL AREA
Below Ground: 445 sq. ft, FLOOR 2: 1576 sq. ft, FLOOR 3: 1351 sq. ft
EXCLUDED AREAS: UNDEFINED: 15 sq. ft, ELECTRICAL ROOM: 66 sq. ft, GARAGE: 1007 sq. ft,
PORCH: 32 sq. ft, STORAGE: 53 sq. ft, DECK: 256 sq. ft,
BALCONY: 21 sq. ft
TOTAL: 3372 sq. ft
MEASUREMENTS CALCULATED BY V1Photos.COM ARE DEEMED HIGHLY RELIABLE BUT NOT GUARANTEED.



Disclaimer: Sizes and Dimensions are Approximate, Actual May Vary.



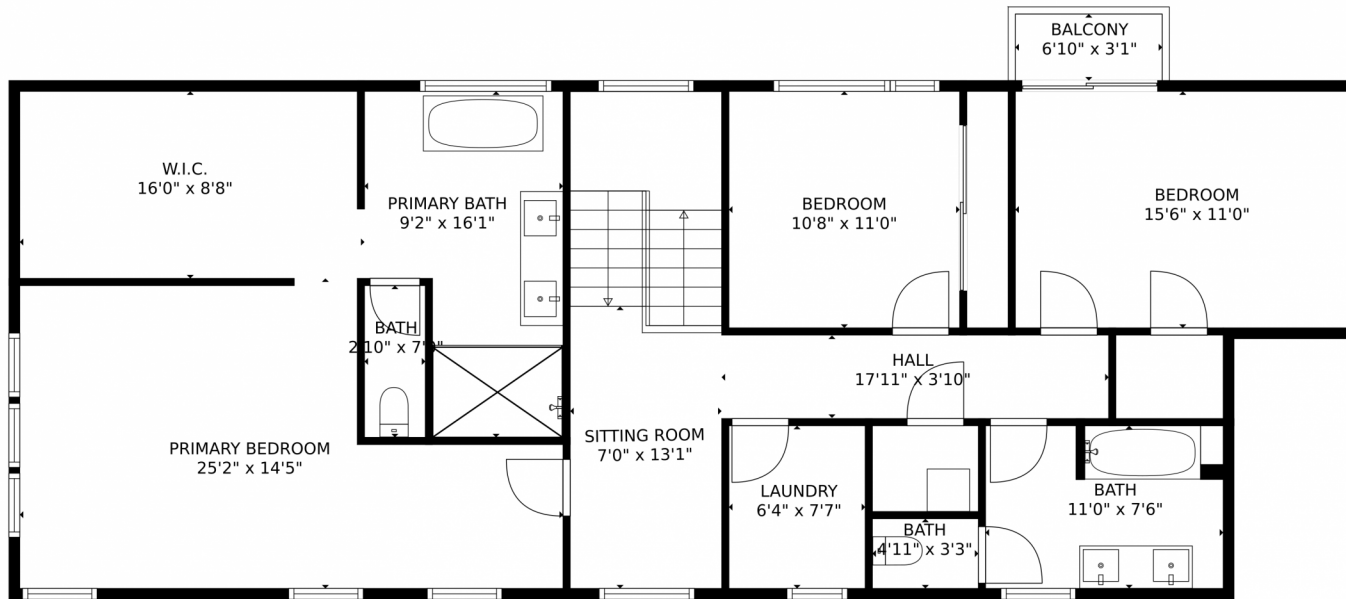
Matthew Lutz
720-448-3822
matthew.f.lutz@gmail.com



Scan code
for more
property
details



8253 Stags Leap Trail, Morrison, CO 80465 – Second Level



GROSS INTERNAL AREA
Below Ground: 445 sq. ft, FLOOR 2: 1576 sq. ft, FLOOR 3: 1351 sq. ft
EXCLUDED AREAS: UNDEFINED: 15 sq. ft, ELECTRICAL ROOM: 66 sq. ft, GARAGE: 1007 sq. ft,
PORCH: 32 sq. ft, STORAGE: 53 sq. ft, DECK: 256 sq. ft,
BATH: 21 sq. ft
TOTAL: 3372 sq. ft
MEASUREMENTS CALCULATED BY V1Photos.COM ARE DEEMED HIGHLY RELIABLE BUT NOT GUARANTEED.



Disclaimer: Sizes and Dimensions are Approximate, Actual May Vary.



Matthew Lutz
720-448-3822
matthew.f.lutz@gmail.com

