



3125 Antelope Ridge Trail
 Parker, CO 80138
 COMMUNITY: Elkhorn Ranch

MLS # 8170518

PRICE
 \$1,190,000



Single Family



4458 SQFT



3 Beds



3 Baths



4 Car



5 Acre

PROPERTY DETAILS

Home on over 5 acres of pristine land and backs to 220 acres of natural landscape
 Gourmet kitchen- stainless appliances, double oven, massive island with seating, 5-burner gas stove, walk-in pantry
 Master suite w/ views, 5-piece bath including soaking tub, dual vanities, and a spacious walk-in closet
 Spacious loft for additional family room, playroom, or office space
 4-car garage (one bay is tandem)
 Large unfinished walk-out basement
 Covered main floor deck, custom gas fire pit/sitting area, and stamped concrete sun patio



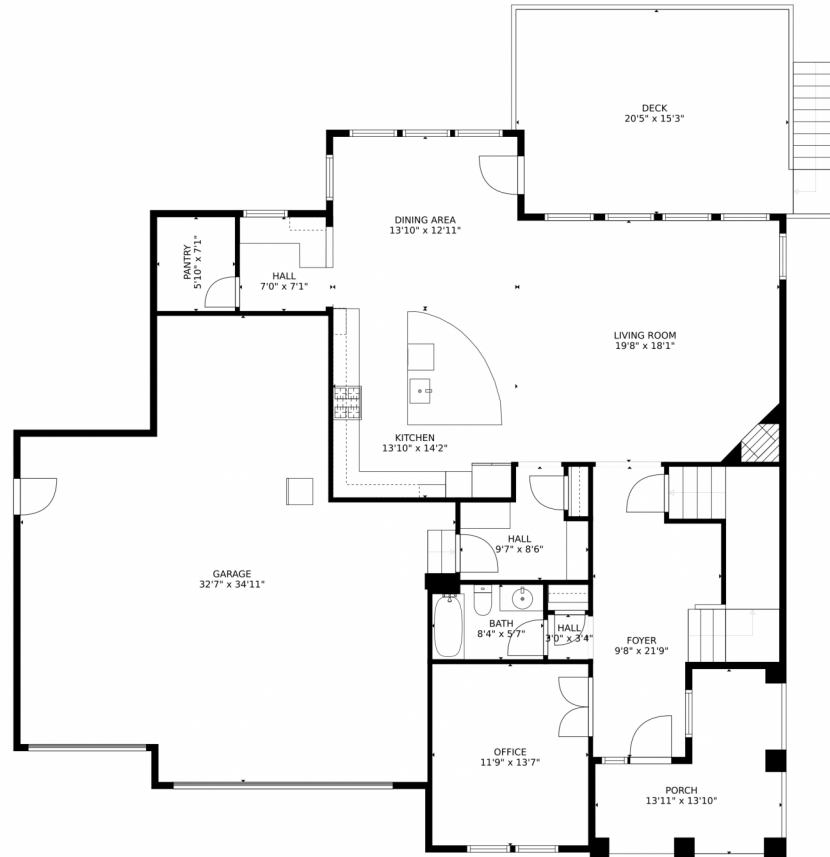
Stephanie Gunther
 303-669-7766
 realestate@stephaniegunther.com



Scan code
 for more
 property
 details



3125 Antelope Ridge Trail, Parker, CO 80138 – Main Level



GROSS INTERNAL AREA
FLOOR 1: 7 sq. ft, FLOOR 2: 1393 sq. ft
FLOOR 3: 1521 sq. ft, EXCLUDED AREAS:
UNFINISHED BASEMENT: 1341 sq. ft, PATIO: 673 sq. ft
GARAGE: 855 sq. ft, DECK: 310 sq. ft
PORCH: 134 sq. ft
TOTAL: 2922 sq. ft

MEASUREMENTS CALCULATED BY V1Photos.com ARE DEEMED HIGHLY RELIABLE BUT NOT GUARANTEED.



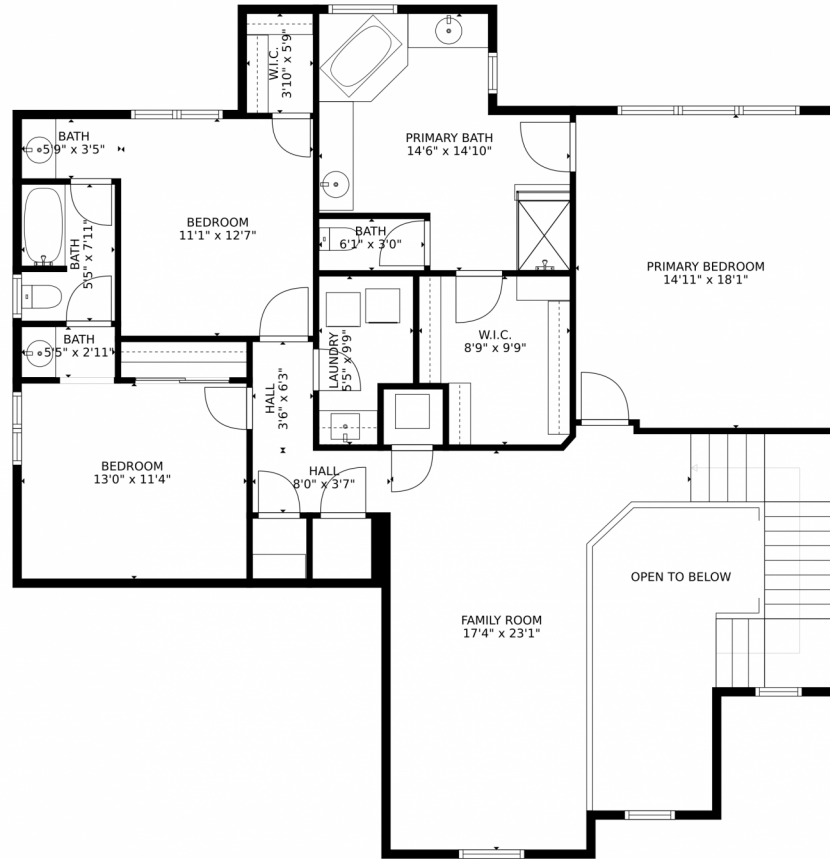
Disclaimer: Sizes and Dimensions are Approximate, Actual May Vary.



Stephanie Gunther
303-669-7766
realestate@stephaniegunther.com



3125 Antelope Ridge Trail, Parker, CO 80138 — Second Level



GROSS INTERNAL AREA
FLOOR 1: 7 sq. ft, FLOOR 2: 1393 sq. ft
FLOOR 3: 1521 sq. ft, EXCLUDED AREAS:
UNFINISHED BASEMENT: 1341 sq. ft, PATIO: 673 sq. ft
GARAGE: 855 sq. ft, DECK: 310 sq. ft
PORCH: 134 sq. ft
TOTAL: 2922 sq. ft

MEASUREMENTS CALCULATED BY V1Photos.com ARE DEEMED HIGHLY RELIABLE BUT NOT GUARANTEED.



Disclaimer: Sizes and Dimensions are Approximate, Actual May Vary.



Stephanie Gunther
303-669-7766
realestate@stephaniegunther.com

