




 Single Family

 7000 SQFT

 6 Beds

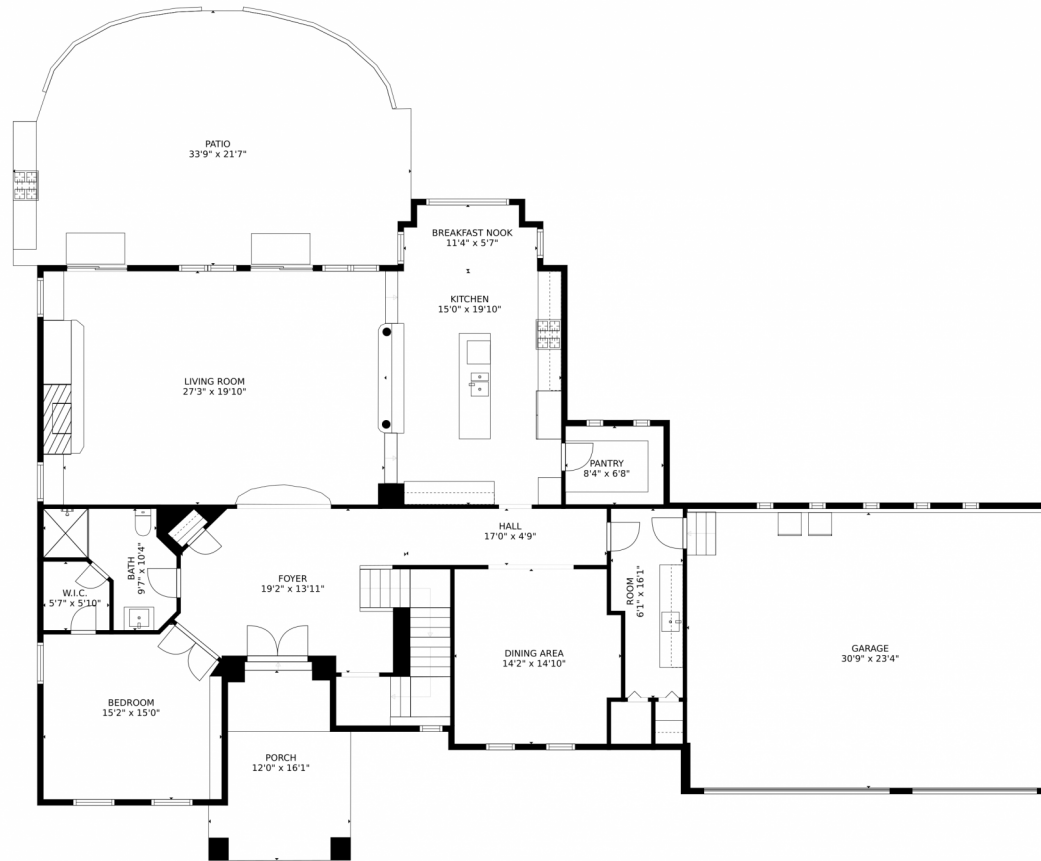
 5 Baths



**Laura Gilsdorf**  
720-530-9085  
laura.gilsdorf@madisonprops.com



# 4358 West Hinsdale Avenue, Littleton, CO 80128 – Main Level



GROSS INTERNAL AREA  
FLOOR 1: 1835 sq. ft. FLOOR 2: 2074 sq. ft.  
FLOOR 3: 2555 sq. ft. EXCLUDED AREAS:  
GARAGE: 729 sq. ft. PATIO: 638 sq. ft.  
PORCH: 173 sq. ft.  
TOTAL: 6464 sq. ft.

MEASUREMENTS CALCULATED BY V1Photos.com ARE DEEMED HIGHLY RELIABLE BUT NOT GUARANTEED.



Disclaimer: Sizes and Dimensions are Approximate, Actual May Vary.

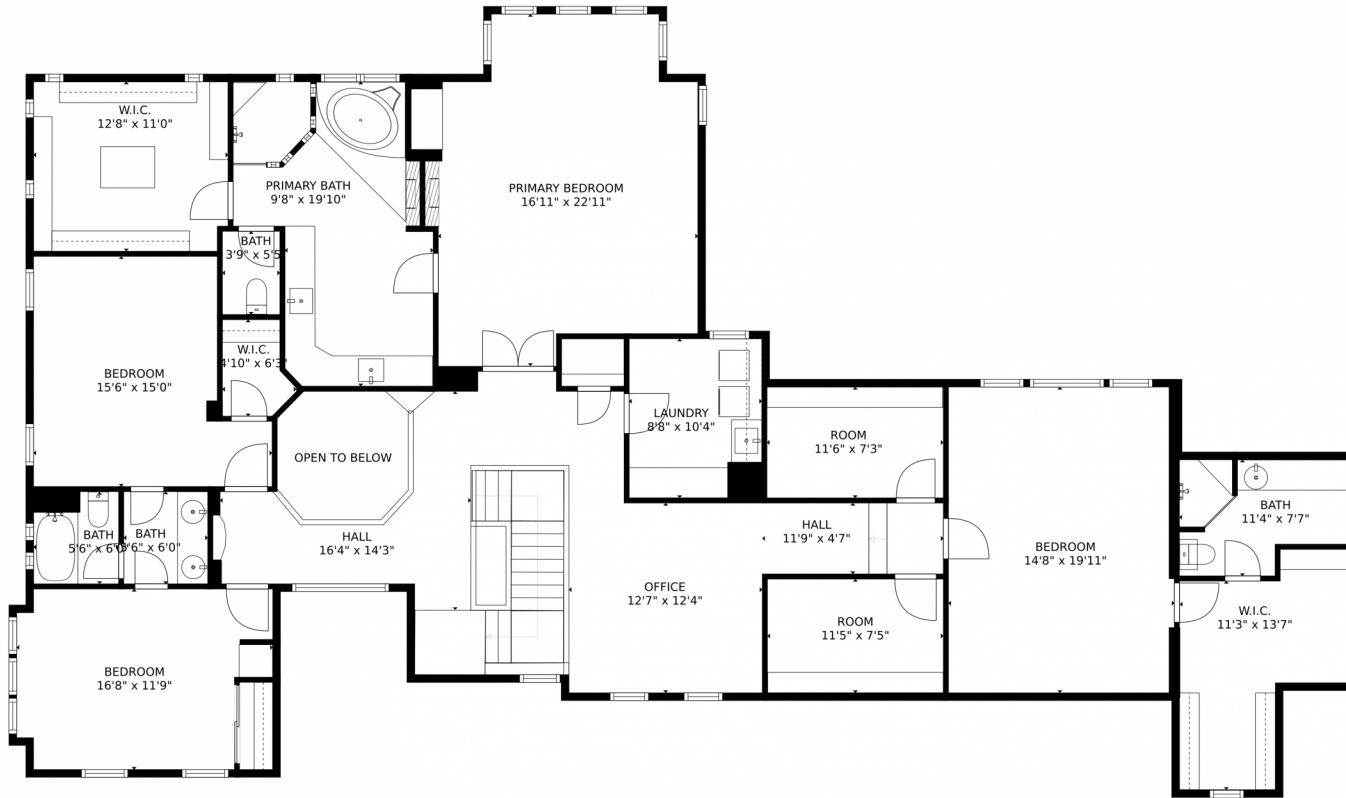


**Laura Gilsdorf**  
720-530-9085  
laura.gilsdorf@madisonprops.com



Scan code  
for more  
property  
details

# 4358 West Hinsdale Avenue, Littleton, CO 80128 – Second Level



GROSS INTERNAL AREA  
FLOOR 1: 1835 sq. ft. FLOOR 2: 2074 sq. ft.  
FLOOR 3: 2555 sq. ft. EXCLUDED AREAS:  
GARAGE: 729 sq. ft. PATIO: 638 sq. ft.  
PORCH: 173 sq. ft.  
TOTAL: 6464 sq. ft.

MEASUREMENTS CALCULATED BY V1Photos.com ARE DEEMED HIGHLY RELIABLE BUT NOT GUARANTEED.



Disclaimer: Sizes and Dimensions are Approximate, Actual May Vary.



**Laura Gilsdorf**  
720-530-9085  
laura.gilsdorf@madisonprops.com



Scan code  
for more  
property  
details



# 4358 West Hinsdale Avenue, Littleton, CO 80128 – Basement



GROSS INTERNAL AREA  
FLOOR 1: 1835 sq. ft. FLOOR 2: 2074 sq. ft.  
FLOOR 3: 2555 sq. ft. EXCLUDED AREAS:  
GARAGE: 729 sq. ft. PATIO: 638 sq. ft.  
PORCH: 173 sq. ft.  
TOTAL: 6464 sq. ft.

MEASUREMENTS CALCULATED BY V1Photos.com ARE DEEMED HIGHLY RELIABLE BUT NOT GUARANTEED.



Disclaimer: Sizes and Dimensions are Approximate, Actual May Vary.



**Laura Gilsdorf**  
720-530-9085  
laura.gilsdorf@madisonprops.com

