





 Single Family

 1893 SQFT

 3 Beds

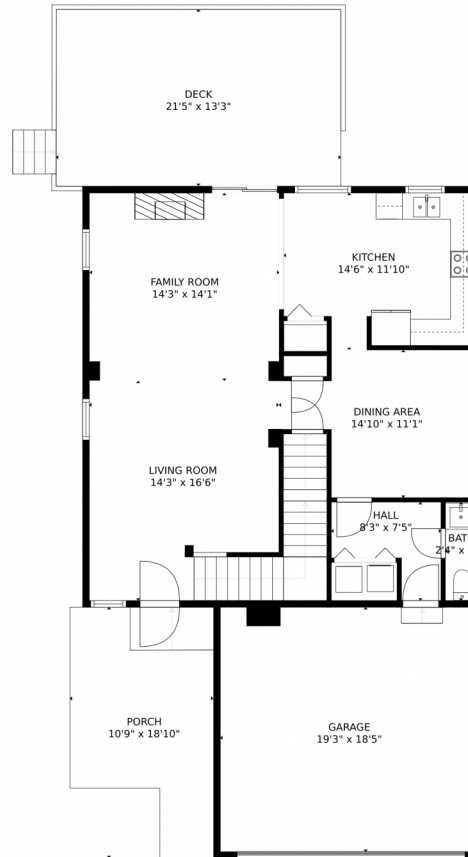
 10+ Baths



Taylor Haas
303-665-7368
taylorh@coloradorpm.com
<https://www.coloradorpm.com/available-rental-properties-denver>



17624 Peyton Dr, Parker, CO 80134 – Main Level



GROSS INTERNAL AREA
FLOOR 1: 5 sq. ft., FLOOR 2: 892 sq. ft.
FLOOR 3: 913 sq. ft., EXCLUDED AREAS:
UNFINISHED BASEMENT: 854 sq. ft., GARAGE: 354 sq. ft.
DECK: 284 sq. ft., PORCH: 168 sq. ft.
TOTAL: 1811 sq. ft.

MEASUREMENTS CALCULATED BY V1Photos.com ARE DEEMED HIGHLY RELIABLE BUT NOT GUARANTEED.



Disclaimer: Sizes and Dimensions are Approximate, Actual May Vary.



Taylor Haas

303-665-7368

taylorh@coloradorpm.com

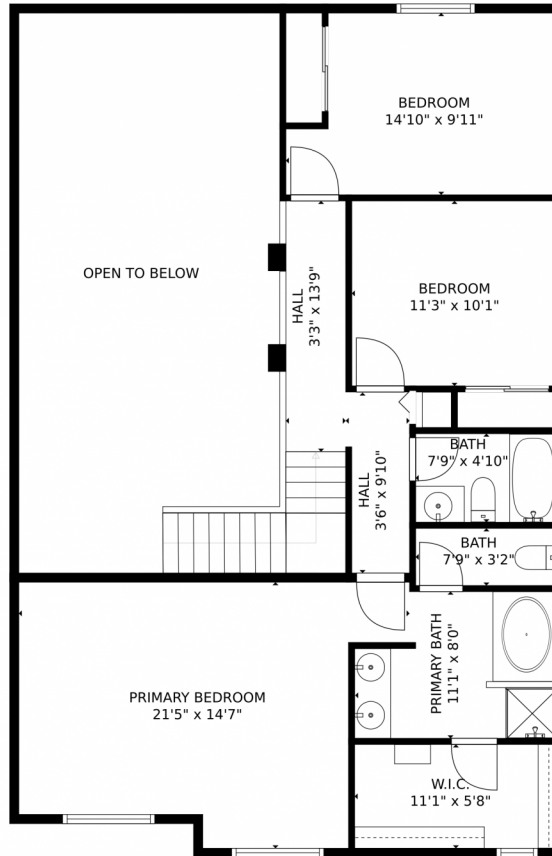
<https://www.coloradorpm.com/available-rental-properties-denver>



Scan code
for more
property
details



17624 Peyton Dr, Parker, CO 80134 – Second Level



GROSS INTERNAL AREA
FLOOR 1: 5 sq. ft., FLOOR 2: 892 sq. ft.
FLOOR 3: 913 sq. ft., EXCLUDED AREAS:
UNFINISHED BASEMENT: 854 sq. ft., GARAGE: 354 sq. ft.
DECK: 284 sq. ft., PORCH: 168 sq. ft.
TOTAL: 1811 sq. ft.
MEASUREMENTS CALCULATED BY V1Photos.com ARE DEEMED HIGHLY RELIABLE BUT NOT GUARANTEED.

Disclaimer: Sizes and Dimensions are Approximate, Actual May Vary.

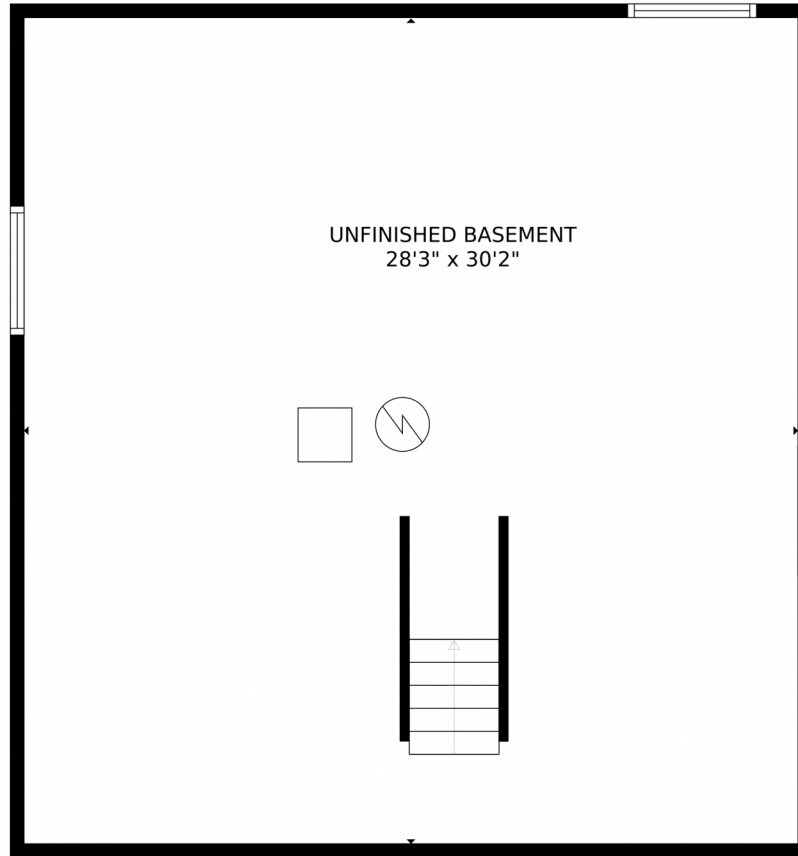


Taylor Haas
303-665-7368
taylorh@coloradorpm.com
<https://www.coloradorpm.com/available-rental-properties-denver>



Scan code
for more
property
details





GROSS INTERNAL AREA
FLOOR 1: 5 sq. ft., FLOOR 2: 892 sq. ft.
FLOOR 3: 913 sq. ft., EXCLUDED AREAS:
UNFINISHED BASEMENT: 854 sq. ft., GARAGE: 354 sq. ft.
DECK: 284 sq. ft., PORCH: 168 sq. ft.
TOTAL: 1811 sq. ft.

MEASUREMENTS CALCULATED BY V1Photos.COM ARE DEEMED HIGHLY RELIABLE BUT NOT GUARANTEED.



Disclaimer: Sizes and Dimensions are Approximate, Actual May Vary.



Taylor Haas
303-665-7368
taylorh@coloradorpm.com
<https://www.coloradorpm.com/available-rental-properties-denver>



17624 Peyton Dr, Parker, CO 80134 – All Levels



FLOOR 1

FLOOR 2

FLOOR 3

GROSS INTERNAL AREA
FLOOR 1: 5 sq. ft., FLOOR 2: 892 sq. ft.
FLOOR 3: 913 sq. ft., EXCLUDED AREAS:
UNFINISHED BASEMENT: 854 sq. ft., GARAGE: 354 sq. ft.
DECK: 284 sq. ft., PORCH: 168 sq. ft.
TOTAL: 1811 sq. ft.

MEASUREMENTS CALCULATED BY V1Photos.com ARE DEEMED HIGHLY RELIABLE BUT NOT GUARANTEED.



Disclaimer: Sizes and Dimensions are Approximate, Actual May Vary.



Taylor Haas

303-665-7368

taylorh@coloradorpm.com

<https://www.coloradorpm.com/available-rental-properties-denver>



Scan code
for more
property
details

