



1548 HARRISON Court  
 Louisville, CO 80027  
 COMMUNITY: Hillsborough West 1

MLS # IR983479  
 PRICE \$834,500



Single Family   1736 SQFT   4 Beds   2 Baths   2 Car   0.31 Acre

## PROPERTY DETAILS

SHOWINGS BEGIN: Open house March 18 11 AM-2 PM Welcome to Harrison Ct, a safe & family-friendly cul-de-sac that offers the best of both worlds - easy access to the city & a peaceful suburban lifestyle. This beautiful home has been thoughtfully updated & upgraded with modern amenities & features that will make your life a breeze. From the fenced yard to the energy efficient details, this property is sure to delight. The updated kitchen makes life easier, with newer appliances & organized spaces. The dining area is adjacent to the kitchen, creating an open concept space that's perfect for seamless living & entertaining. From here, you can step outside onto the deck and enjoy the park-like 1/3 acre fenced backyard with raised garden beds, irrigation, & plenty of room for outdoor activities. The bedrooms feature closet organization units, & the bathrooms have been updated too. Easy care, pet friendly luxury vinyl plank flooring throughout. Living on Harrison Ct without any HOAs is a dream come true - you're just minutes away from everything you need, from groceries to schools, and there are walking paths and trails in every direction. You can enjoy the outdoors at Harper Lake, the dog park, or the nearby off-leash trails. The Coal Creek Elementary is within walking distance, and the Louisville amenities make life easy and fun. Plus, the easy access to Boulder/Denver amenities & the Foothills makes it an ideal location. Don't miss out on this opportunity to



Colleen Vandendriessche  
 303-877-7440  
 colleen@relopros.com



own this stunning home in a prime location. Schedule a showing today!



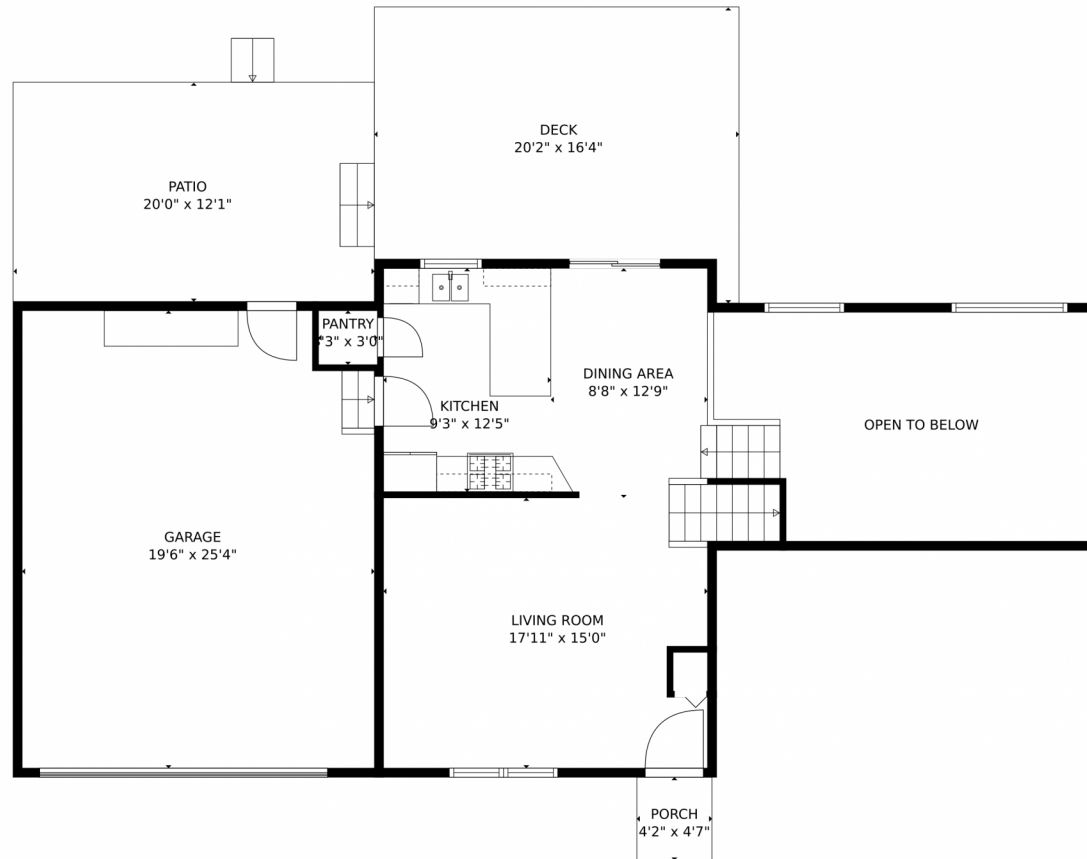
**Colleen Vandendriessche**  
303-877-7440  
colleen@relopros.com



Scan code  
for more  
property  
details



# 1548 HARRISON Court, Louisville, CO 80027 – Main Level



GROSS INTERNAL AREA  
FLOOR 1: 513 sq. ft. FLOOR 2: 537 sq. ft.  
FLOOR 3: 633 sq. ft. EXCLUDED AREAS:  
GARAGE: 483 sq. ft. DECK: 285 sq. ft.  
PATIO: 243 sq. ft. PORCH: 19 sq. ft.  
TOTAL: 1684 sq. ft.

MEASUREMENTS CALCULATED BY V1Photos.COM ARE DEEMED HIGHLY RELIABLE BUT NOT GUARANTEED.



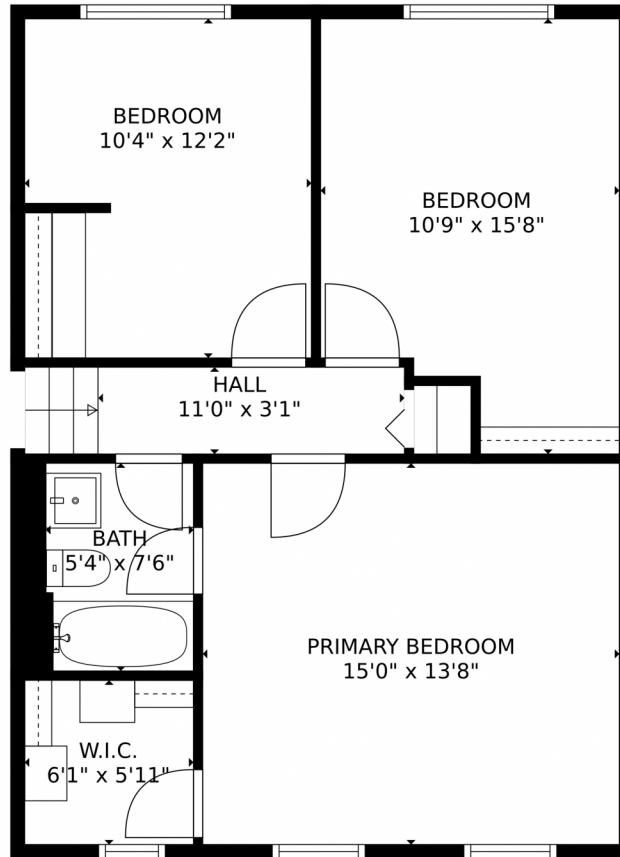
Disclaimer: Sizes and Dimensions are Approximate, Actual May Vary.



Colleen Vandendriessche  
303-877-7440  
colleen@relopros.com



1548 HARRISON Court, Louisville, CO 80027 – Upper Level



GROSS INTERNAL AREA  
FLOOR 1: 513 sq. ft. FLOOR 2: 537 sq. ft.  
FLOOR 3: 633 sq. ft. EXCLUDED AREAS:  
GARAGE: 483 sq. ft. DECK: 285 sq. ft.  
PATIO: 243 sq. ft. PORCH: 19 sq. ft.  
TOTAL: 1684 sq. ft.

MEASUREMENTS CALCULATED BY V1Photos.COM ARE DEEMED HIGHLY RELIABLE BUT NOT GUARANTEED.



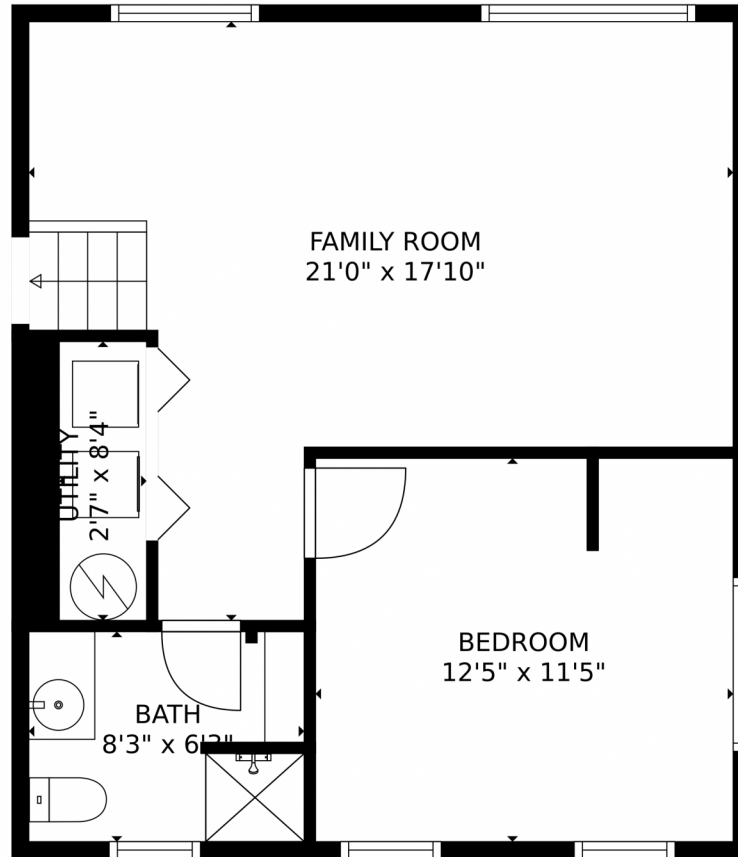
Disclaimer: Sizes and Dimensions are Approximate, Actual May Vary.



Colleen Vandendriessche  
303-877-7440  
colleen@relopros.com



1548 HARRISON Court, Louisville, CO 80027 – Lower Level



GROSS INTERNAL AREA  
FLOOR 1: 513 sq. ft. FLOOR 2: 537 sq. ft.  
FLOOR 3: 633 sq. ft. EXCLUDED AREAS:  
GARAGE: 483 sq. ft. DECK: 285 sq. ft.  
PATIO: 243 sq. ft. PORCH: 19 sq. ft.  
TOTAL: 1684 sq. ft.

MEASUREMENTS CALCULATED BY V1Photos.COM ARE DEEMED HIGHLY RELIABLE BUT NOT GUARANTEED.



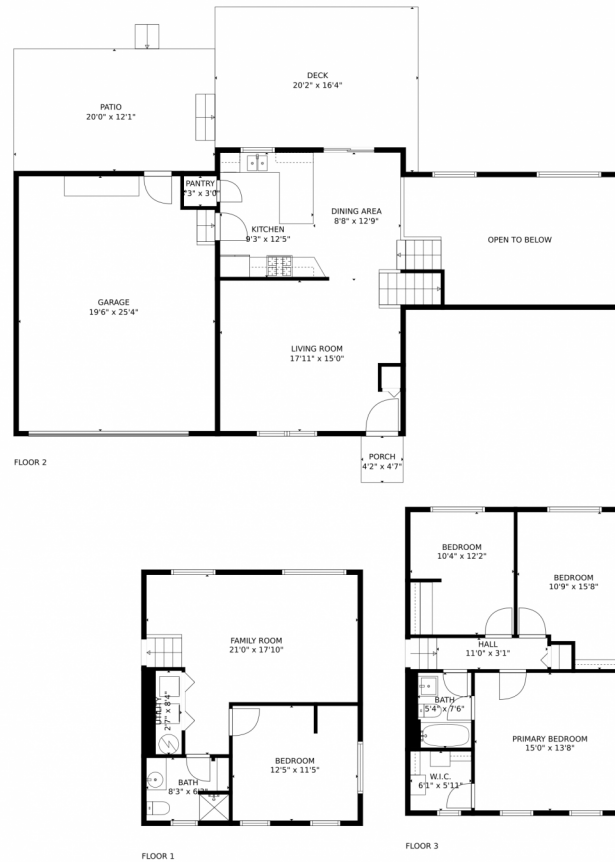
Disclaimer: Sizes and Dimensions are Approximate, Actual May Vary.



Colleen Vandendriessche  
303-877-7440  
colleen@relopros.com



# 1548 HARRISON Court, Louisville, CO 80027 – All Levels



GROSS INTERNAL AREA  
FLOOR 1: 513 sq. ft. FLOOR 2: 537 sq. ft.  
FLOOR 3: 633 sq. ft. EXCLUDED AREAS:  
GARAGE: 483 sq. ft. DECK: 285 sq. ft.  
PATIO: 243 sq. ft. PORCH: 19 sq. ft.  
TOTAL: 1684 sq. ft.  
MEASUREMENTS CALCULATED BY V1Photos.COM ARE DEEMED HIGHLY RELIABLE BUT NOT GUARANTEED.



Disclaimer: Sizes and Dimensions are Approximate, Actual May Vary.



Colleen Vandendriessche  
303-877-7440  
colleen@relopros.com

