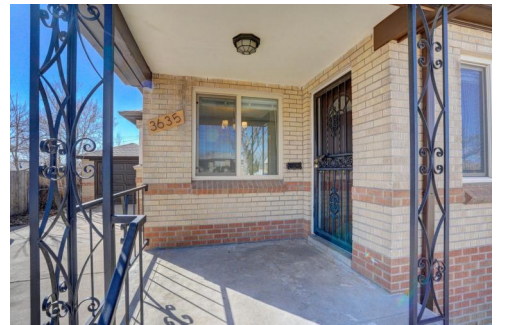


3635 Ivy St.
Denver, CO 80207



Single Family



1500 SQFT



Jaden Combs
303-324-1437
jaden@kentwood.com



Scan code
for more
property
details



3635 Ivy St., Denver, CO 80207 – Main Level



GROSS INTERNAL AREA
FLOOR 1: 812 sq. ft. FLOOR 2: 857 sq. ft.
EXCLUDED AREAS: GARAGE: 220 sq. ft.
PATIO: 174 sq. ft. PORCH: 52 sq. ft.
TOTAL: 1669 sq. ft.

MEASUREMENTS CALCULATED BY V1Photos.COM ARE DEEMED HIGHLY RELIABLE BUT NOT GUARANTEED.



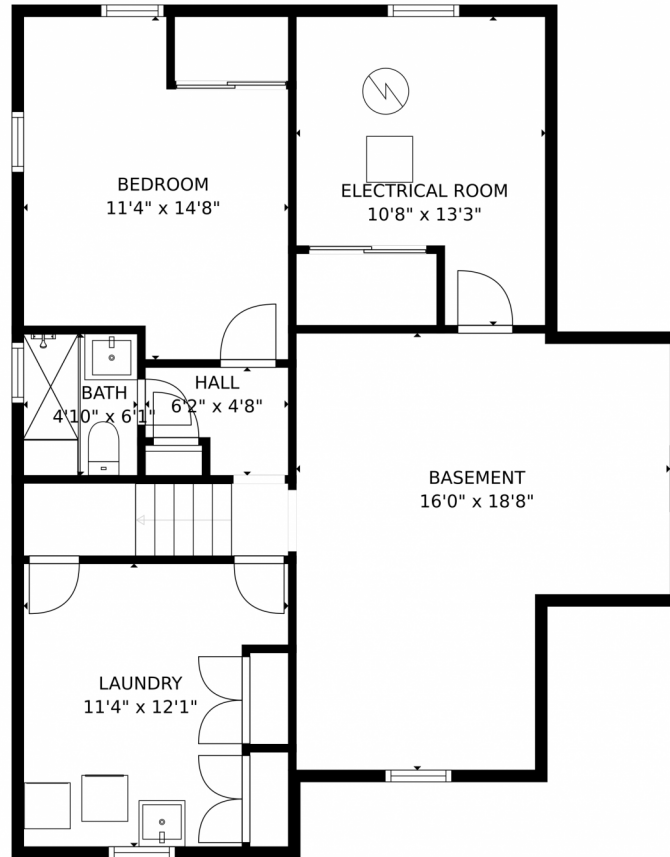
Disclaimer: Sizes and Dimensions are Approximate, Actual May Vary.



Jaden Combs
303-324-1437
jaden@kentwood.com



3635 Ivy St., Denver, CO 80207 – Lower Level



GROSS INTERNAL AREA
FLOOR 1: 812 sq. ft., FLOOR 2: 857 sq. ft.
EXCLUDED AREAS: , GARAGE: 220 sq. ft.
PATIO: 174 sq. ft., PORCH: 52 sq. ft.
TOTAL: 1669 sq. ft.
MEASUREMENTS CALCULATED BY V1Photos.com ARE DEEMED HIGHLY RELIABLE BUT NOT GUARANTEED.



Disclaimer: Sizes and Dimensions are Approximate, Actual May Vary.



Jaden Combs
303-324-1437
jaden@kentwood.com



Scan code
for more
property
details



3635 Ivy St., Denver, CO 80207 – All Levels



GROSS INTERNAL AREA
FLOOR 1: 812 sq. ft, FLOOR 2: 857 sq. ft
EXCLUDED AREAS: , GARAGE: 220 sq. ft
PATIO: 174 sq. ft, PORCH: 52 sq. ft
TOTAL: 1669 sq. ft
MEASUREMENTS CALCULATED BY V1Photos.com ARE DEEMED HIGHLY RELIABLE BUT NOT GUARANTEED.



Disclaimer: Sizes and Dimensions are Approximate, Actual May Vary.



Jaden Combs
303-324-1437
jaden@kentwood.com

