

Stunning Park Hill Tudor



 Single Family
  3264 SQFT
  4 Beds
  3 Baths
  2 Car
  0.15 Acre

PROPERTY DETAILS

Welcome to this stunning Tudor home, nestled on a serene, tree-lined street surrounded by some of Denver's finest homes. From the moment you step inside, you'll be captivated by the open and spacious layout, boasting with gorgeous vaulted ceilings and exquisite woodwork throughout. The kitchen and bathrooms have been thoughtfully remodeled, adding a touch of modern elegance to the classic charm of this quintessential home. With its Southern exposure and high ceilings, the home is filled with natural light, creating a warm and inviting ambiance. The lower level is equally impressive, featuring 9' ceilings, a cozy gas fireplace, smart shades, and an abundance of natural light, making it the perfect space for entertaining or simply relaxing. The bonus room is a versatile space that can be used as an office, workout room, shop, or craft room. It opens up to a private and inviting backyard, complete with garden beds, ideal for gardening or outdoor entertaining. The two-car garage provides ample space for your vehicles and storage. Located just moments away from City Park, Cherry Creek, and with easy



**Jennifer Steinert**  
 303-246-2226  
 jen@madisonprops.com



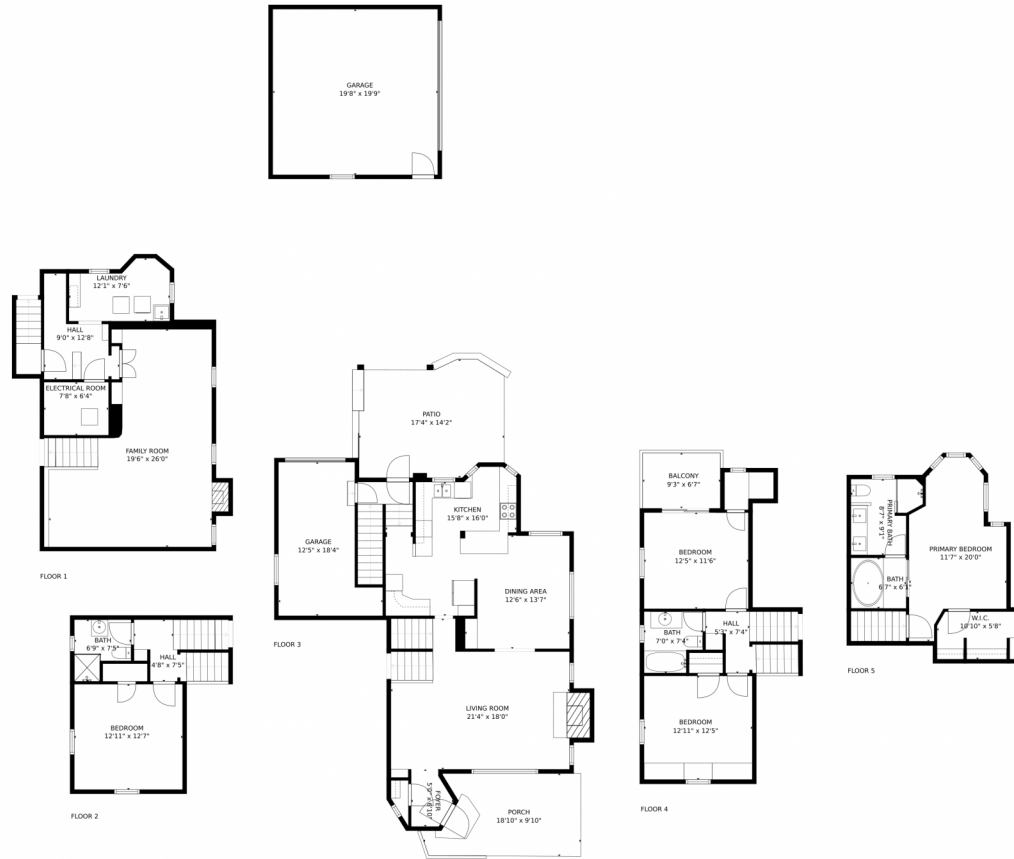
access to all areas of town, this home truly embodies the Park Hill lifestyle. Don't miss out on the opportunity to make this magnificent home your own!



**Jennifer Steinert**  
303-246-2226  
jen@madisonprops.com



# 1600 N Leyden Street, Denver, CO 80220 – All Levels



GROSS INTERNAL AREA  
 FLOOR 1: 669 sq. ft, FLOOR 2: 303 sq. ft  
 FLOOR 3: 806 sq. ft, FLOOR 4: 471 sq. ft  
 FLOOR 5: 391 sq. ft, EXCLUDED AREAS:  
 GARAGE: 569 sq. ft, PATIO: 219 sq. ft  
 PORCH: 163 sq. ft, BALCONY: 62 sq. ft  
 TOTAL: 2640 sq. ft

MEASUREMENTS CALCULATED BY V1Photos.COM ARE DEEMED HIGHLY RELIABLE BUT NOT GUARANTEED.



Disclaimer: Sizes and Dimensions are Approximate, Actual May Vary.



**Jennifer Steinert**  
 303-246-2226  
 jen@madisonprops.com



Scan code for more property details