



13790 Night Owl Lane
 Parker, CO 80134
 COMMUNITY: Stepping Stone

MLS # 5309203
 PRICE \$940,000

STEPPING STONE BEAUTY!



Single Family 4156 SQFT 4 Beds 4 Baths 3 Car 0.18 Acre

PROPERTY DETAILS

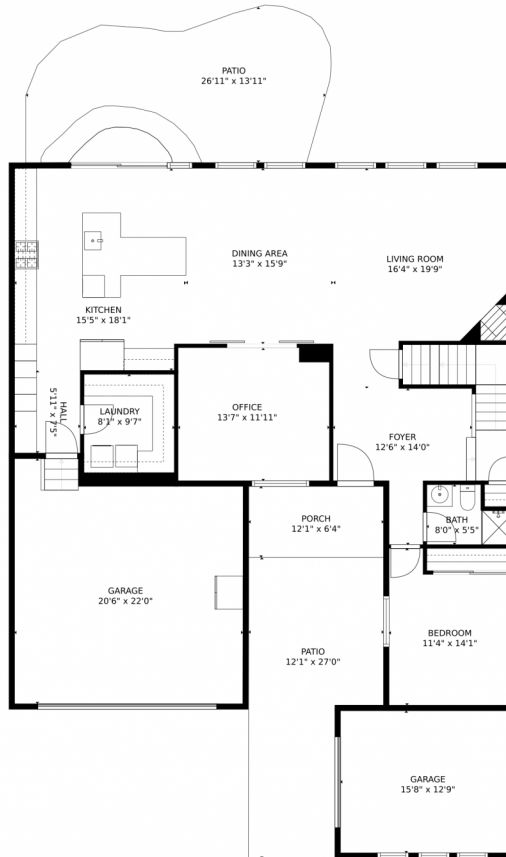
Location, location, location! Lone Tree adjacent, turn key Shea home in the award-winning destination neighborhood, Stepping Stone, backs to open space, nature trail and the Parker Incline. The main level features barn doors, modern stone fireplace, and designer lighting fixtures. The immaculate kitchen opens to a spacious family room, with an adjacent oversized office. Entertainers will love the well appointed kitchen, including granite counter tops, gas stainless-steel appliances, and top-of-the-line cabinetry. The oversized primary suite is the epitome of luxury, which includes a spacious walk-in closet, oversized tub and shower and executive height counters. Families will appreciate the second floor layout which includes a bonus room and 2 bedrooms and 2 bathroom. The private and large backyard has been professionally landscaped and is perfect for family time or entertaining. There is no need to leave the neighborhood that has it all--clubhouse, pool, parks and trails. But when you need to leave, Lone Tree, Light Rail and DTC are all nearby.



Jennifer Blandon
 720-839-7100
 jennblandon@comcast.net



13790 Night Owl Lane, Parker, CO 80134 – Main Level



GROSS INTERNAL AREA
FLOOR 1: 7 sq. ft, FLOOR 2: 1476 sq. ft
FLOOR 3: 1308 sq. ft, EXCLUDED AREAS:
UNFINISHED BASEMENT: 1159 sq. ft, GARAGE: 615 sq. ft
PATIO: 593 sq. ft, PORCH: 77 sq. ft
TOTAL: 2791 sq. ft
MEASUREMENTS CALCULATED BY V1Photos.COM ARE DEEMED HIGHLY RELIABLE BUT NOT GUARANTEED.

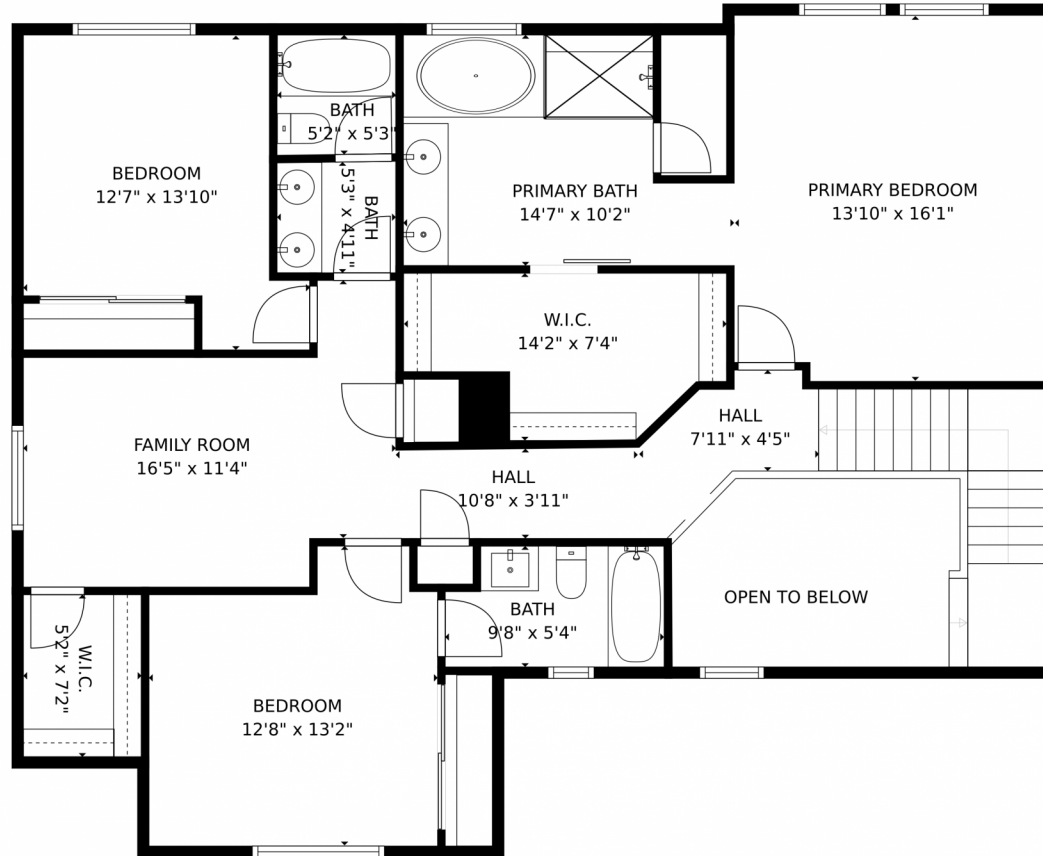
Disclaimer: Sizes and Dimensions are Approximate, Actual May Vary.



Jennifer Blandon
720-839-7100
jennblandon@comcast.net



13790 Night Owl Lane, Parker, CO 80134 – Upper Level



GROSS INTERNAL AREA
FLOOR 1: 7 sq. ft, FLOOR 2: 1476 sq. ft
FLOOR 3: 1308 sq. ft, EXCLUDED AREAS:
UNFINISHED BASEMENT: 1159 sq. ft, GARAGE: 615 sq. ft
PATIO: 593 sq. ft, PORCH: 77 sq. ft
TOTAL: 2791 sq. ft
MEASUREMENTS CALCULATED BY V1Photos.com ARE DEEMED HIGHLY RELIABLE BUT NOT GUARANTEED.

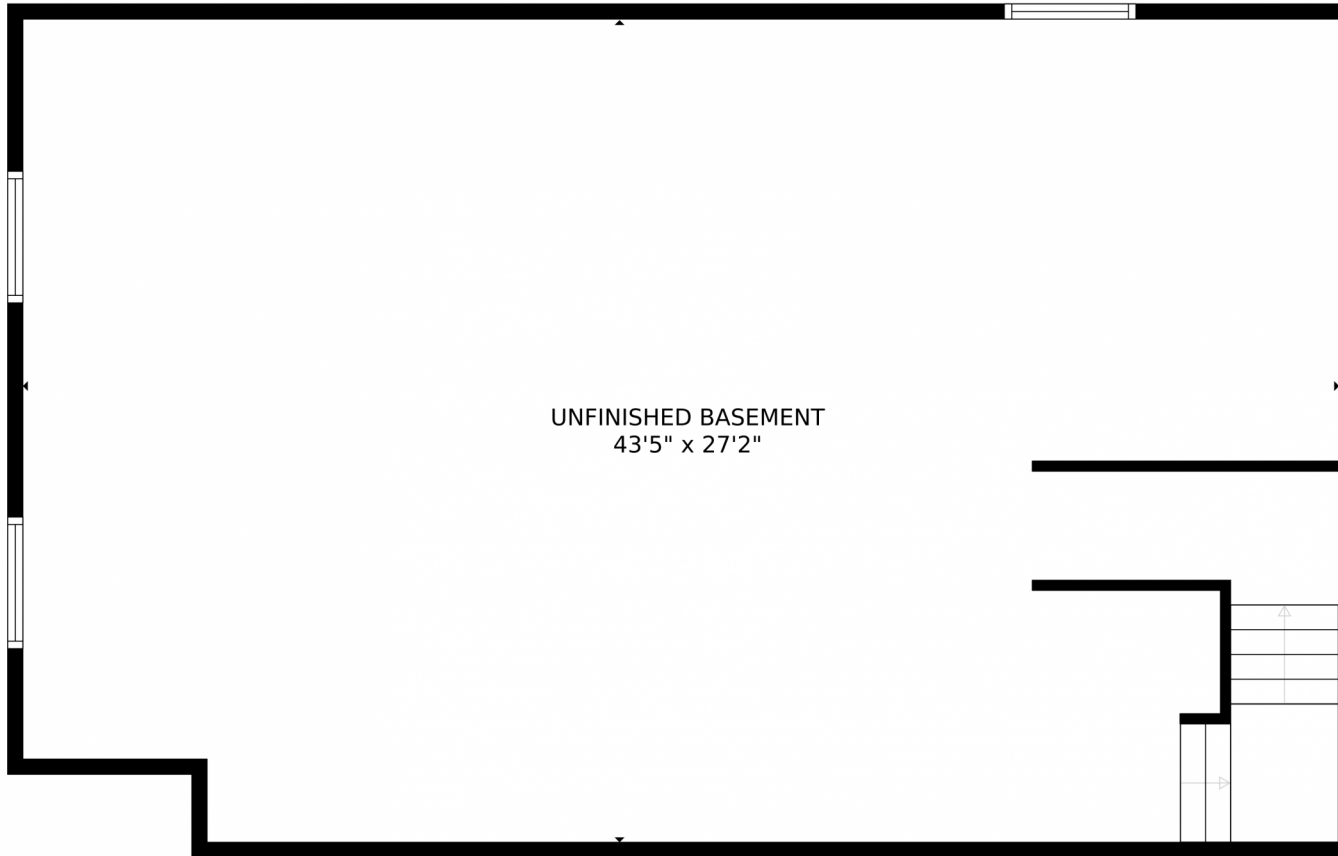


Disclaimer: Sizes and Dimensions are Approximate, Actual May Vary.



Jennifer Blandon
720-839-7100
jennblandon@comcast.net





UNFINISHED BASEMENT
43'5" x 27'2"

GROSS INTERNAL AREA
FLOOR 1: 7 sq. ft, FLOOR 2: 1476 sq. ft
FLOOR 3: 1308 sq. ft, EXCLUDED AREAS:
UNFINISHED BASEMENT: 1159 sq. ft, GARAGE: 615 sq. ft
PATIO: 593 sq. ft, PORCH: 77 sq. ft
TOTAL: 2791 sq. ft
MEASUREMENTS CALCULATED BY V1Photos.com ARE DEEMED HIGHLY RELIABLE BUT NOT GUARANTEED.



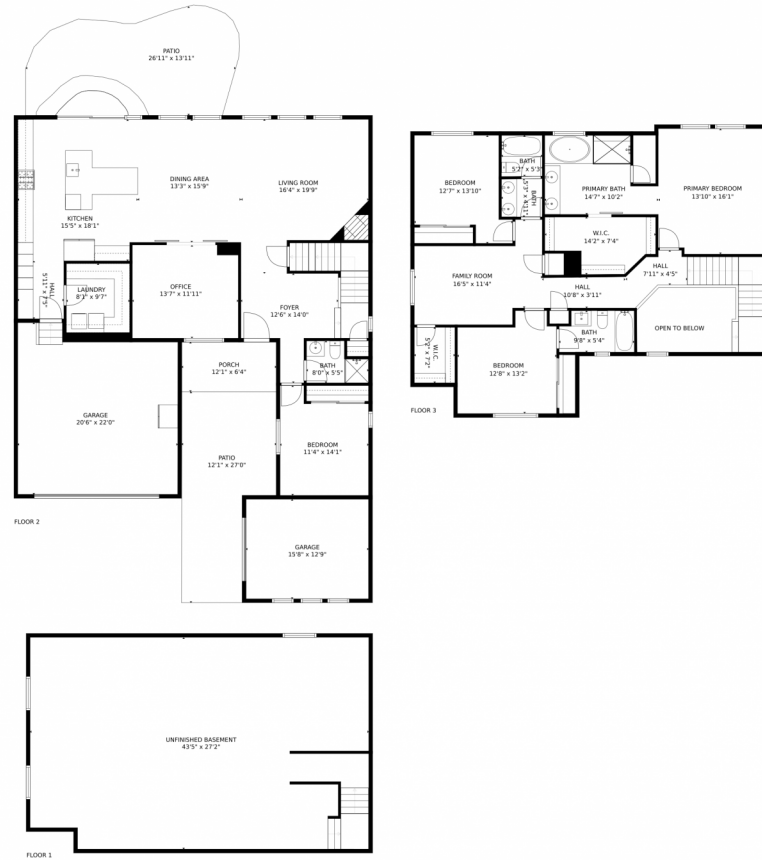
Disclaimer: Sizes and Dimensions are Approximate, Actual May Vary.



Jennifer Blandon
720-839-7100
jennblandon@comcast.net



13790 Night Owl Lane, Parker, CO 80134 – All Levels



GROSS INTERNAL AREA
FLOOR 1: 7 sq. ft, FLOOR 2: 1476 sq. ft
FLOOR 3: 1308 sq. ft, EXCLUDED AREAS:
UNFINISHED BASEMENT: 1159 sq. ft, GARAGE: 615 sq. ft
PATIO: 593 sq. ft, PORCH: 77 sq. ft
TOTAL: 2791 sq. ft
MEASUREMENTS CALCULATED BY V1Photos.com ARE DEEMED HIGHLY RELIABLE BUT NOT GUARANTEED.



Disclaimer: Sizes and Dimensions are Approximate, Actual May Vary.



Jennifer Blandon
720-839-7100
jennblandon@comcast.net

