



20828 E Progress Avenue
 Centennial, CO 80015
 COMMUNITY: Park View Meadows

MLS # 6036283
 PRICE \$525,000



Single Family 2476 SQFT 3 Beds 2 Baths 2 Car 0.16 Acre

PROPERTY DETAILS

Welcome Home to Parkview Highlands! Many honey do's have already been honey done making this sparkling ranch beauty move in ready to the max: brand new interior paint throughout, recently remastered cabinetry in the kitchen, many new lighting features are also found throughout the home along with all tile flooring being new new new! A formal living room and bedroom currently serving as a home office greet you upon arrival. This open ranch has it all for one level living at its very finest with a lovely main entertainment area found quietly nestled at the back of this phenomenal layout flawlessly connecting the family room, massive eat-in dining space, and then the hardy gourmet kitchen. A generously sized owner's suite has it all including a private bathroom and massive walk in closet. Adjacent to the owner's suite you will find a spare bedroom making for three on the main level, perfect for a nursery or teen suite as the secondary full bathroom is just across the hallway. The Park View community has it all just minutes from E-470, Southlands Mall, Aurora Reservoir, and the Saddle Rock Golf Course are all practically in your backyard! Miles and miles of trails intertwine connecting you to your neighborhood and beyond, opting outside is never a problem in Park View. Cool off during the Summer at Lookout Swimming Pool or get in some play time at the park. Park View is also home to a community only pool along with the award winning education system of Cherry Creek



Tatyana Sturm
 720-350-5909
 tatyana@exitrealtydtc.com
 https://thestorckteam.com



Schools including Timberline Elementary, Thunder Ridge Middle, and Eaglecrest High Schools. Enjoy endless dining, shopping, and entertainment options in the Southlands Outdoor Retail District featuring a full AMC Dine-In Movie Theater, abundant casual dining options along with higher end restaurant options as well, and so many shopping choices. The Southlands Mall also features a robust courtyard area with a mini splash park in the Summer and a skating rink in the Winter.



Tatyana Sturm

720-350-5909

tatyana@exitrealtydtc.com

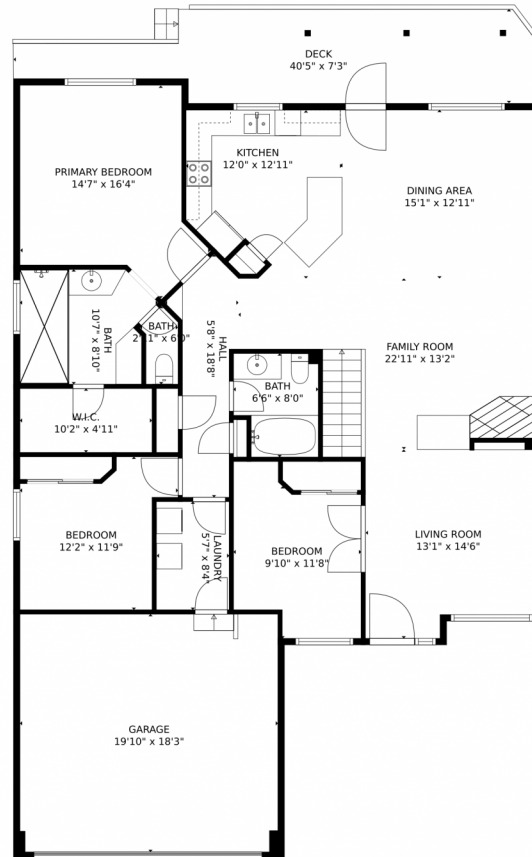
<https://thestorckteam.com>



Scan code
for more
property
details



20828 E Progress Avenue, Centennial, CO 80015 – 1st Floor



GROSS INTERNAL AREA
FLOOR 1: 261 sq. ft, FLOOR 2: 1581 sq. ft
EXCLUDED AREAS: UNFINISHED BASEMENT: 487 sq. ft
GARAGE: 363 sq. ft, DECK: 231 sq. ft
TOTAL: 1842 sq. ft
MEASUREMENTS CALCULATED BY V1Photos.com ARE DEEMED HIGHLY RELIABLE BUT NOT GUARANTEED.



Disclaimer: Sizes and Dimensions are Approximate, Actual May Vary.

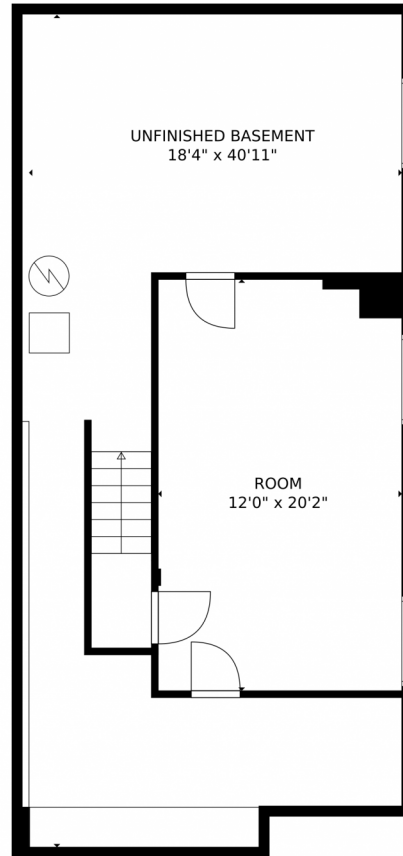


Tatyana Sturm
720-350-5909
tatyana@exitrealttydtc.com
<https://thestorckteam.com>



Scan code
for more
property
details





GROSS INTERNAL AREA
FLOOR 1: 261 sq. ft, FLOOR 2: 1581 sq. ft
EXCLUDED AREAS: , UNFINISHED BASEMENT: 487 sq. ft
GARAGE: 363 sq. ft, DECK: 231 sq. ft
TOTAL: 1842 sq. ft
MEASUREMENTS CALCULATED BY V1Photos.COM ARE DEEMED HIGHLY RELIABLE BUT NOT GUARANTEED.



Disclaimer: Sizes and Dimensions are Approximate, Actual May Vary.



Tatyana Sturm
720-350-5909
tatyana@exitrealtydtc.com
<https://thestorckteam.com>



20828 E Progress Avenue, Centennial, CO 80015 – All Floors



GROSS INTERNAL AREA
FLOOR 1: 261 sq. ft, FLOOR 2: 1581 sq. ft
EXCLUDED AREAS: , UNFINISHED BASEMENT: 487 sq. ft
GARAGE: 363 sq. ft, DECK: 231 sq. ft
TOTAL: 1842 sq. ft

MEASUREMENTS CALCULATED BY V1Photos.COM ARE DEEMED HIGHLY RELIABLE BUT NOT GUARANTEED.



Disclaimer: Sizes and Dimensions are Approximate, Actual May Vary.



Tatyana Sturm
720-350-5909
tatyana@exitrealtydtc.com
<https://thestorckteam.com>



Scan code
for more
property
details

