



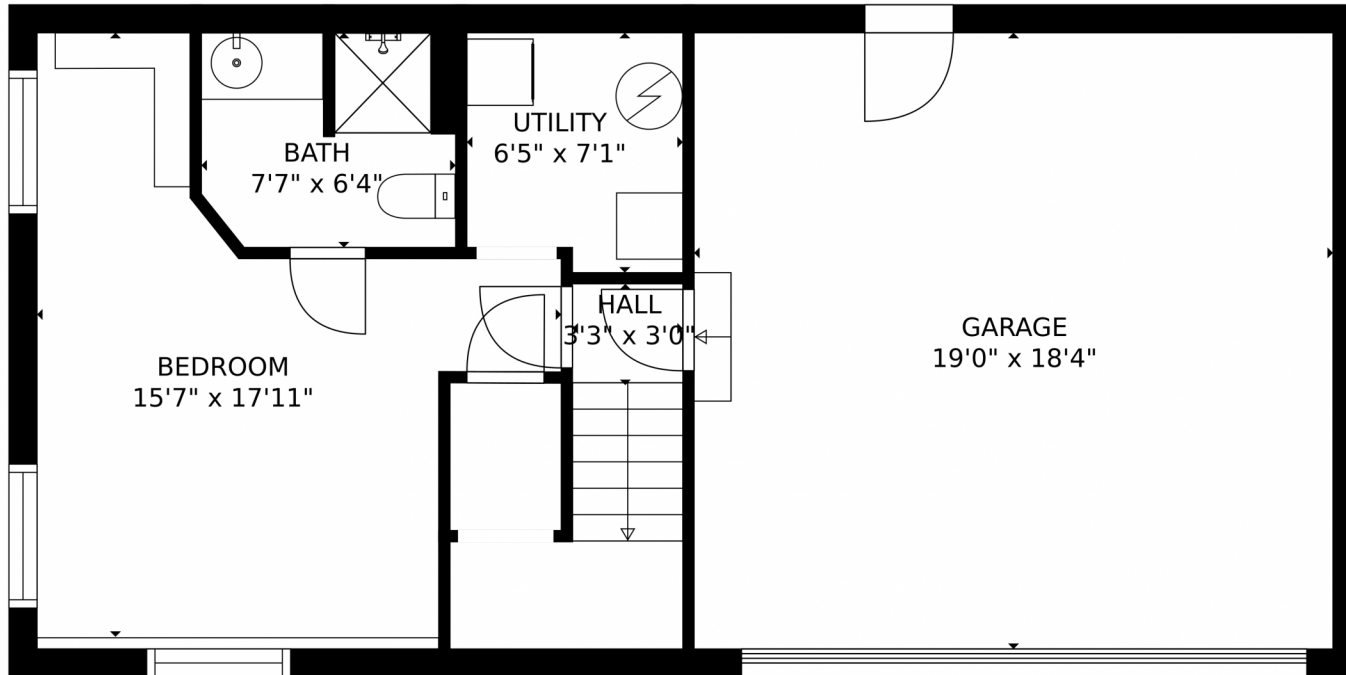
 Single Family  1346 SQFT



**Taylor Haas**  
303-665-7368  
taylorh@coloradorpm.com  
<https://www.coloradorpm.com/available-rental-properties-denver>



2706 North Chestnut Street, Colorado Springs, CO 80907 – Lower Level



GROSS INTERNAL AREA  
FLOOR 1: 351 sq. ft. FLOOR 2: 876 sq. ft  
EXCLUDED AREAS: GARAGE: 347 sq. ft  
DECK: 115 sq. ft. PATIO: 345 sq. ft  
PORCH: 63 sq. ft  
TOTAL: 1227 sq. ft

MEASUREMENTS CALCULATED BY V1Photos.com ARE DEEMED HIGHLY RELIABLE BUT NOT GUARANTEED.



Disclaimer: Sizes and Dimensions are Approximate, Actual May Vary.



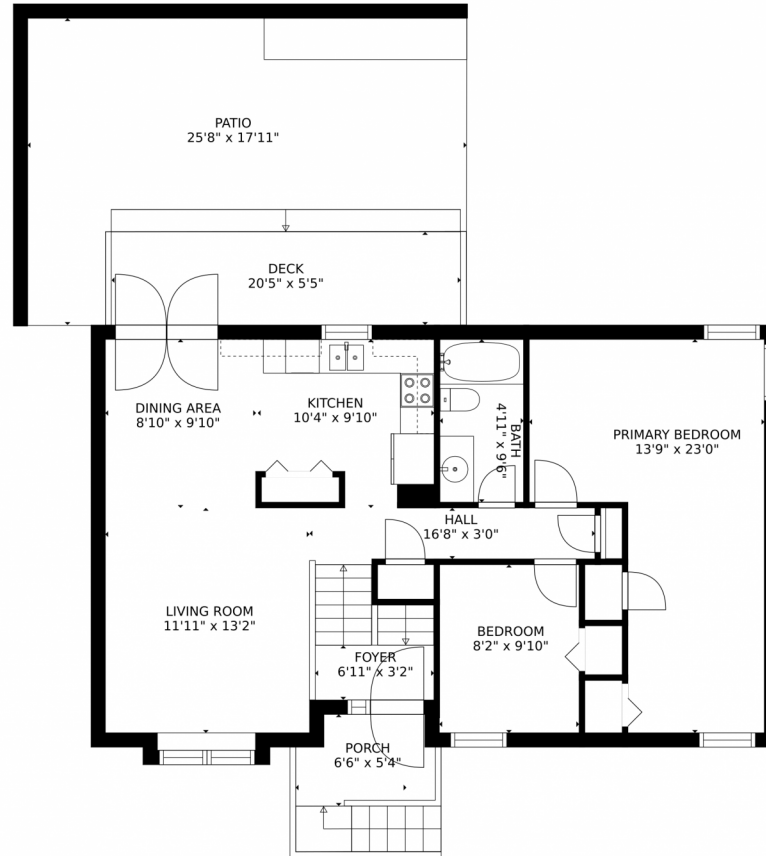
**Taylor Haas**  
303-665-7368  
taylorh@coloradorpm.com  
<https://www.coloradorpm.com/available-rental-properties-denver>



Scan code  
for more  
property  
details



# 2706 North Chestnut Street, Colorado Springs, CO 80907 – Main Level



GROSS INTERNAL AREA  
FLOOR 1: 351 sq. ft. FLOOR 2: 876 sq. ft  
EXCLUDED AREAS: GARAGE: 347 sq. ft  
DECK: 115 sq. ft. PATIO: 345 sq. ft  
PORCH: 63 sq. ft  
TOTAL: 1227 sq. ft

MEASUREMENTS CALCULATED BY V1Photos.COM ARE DEEMED HIGHLY RELIABLE BUT NOT GUARANTEED.



Disclaimer: Sizes and Dimensions are Approximate, Actual May Vary.



**Taylor Haas**

303-665-7368

taylorh@coloradorpm.com

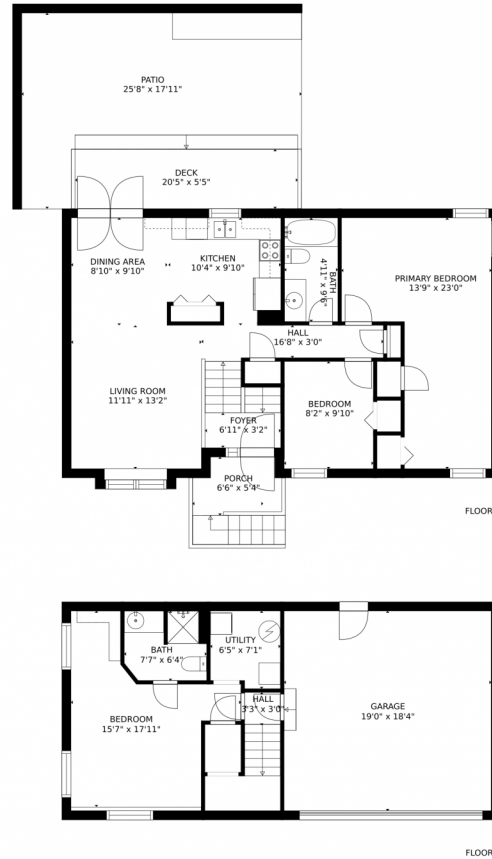
<https://www.coloradorpm.com/available-rental-properties-denver>



Scan code  
for more  
property  
details



# 2706 North Chestnut Street, Colorado Springs, CO 80907 – All Levels



GROSS INTERNAL AREA  
FLOOR 1: 351 sq. ft, FLOOR 2: 876 sq. ft  
EXCLUDED AREAS: , GARAGE: 347 sq. ft  
DECK: 115 sq. ft, PATIO: 345 sq. ft  
PORCH: 63 sq. ft  
TOTAL: 1227 sq. ft

MEASUREMENTS CALCULATED BY V1Photos.COM ARE DEEMED HIGHLY RELIABLE BUT NOT GUARANTEED.



Disclaimer: Sizes and Dimensions are Approximate, Actual May Vary.



**Taylor Haas**  
303-665-7368  
taylorh@coloradorpm.com  
<https://www.coloradorpm.com/available-rental-properties-denver>

