




 Single Family

 2294 SQFT

 4 Beds

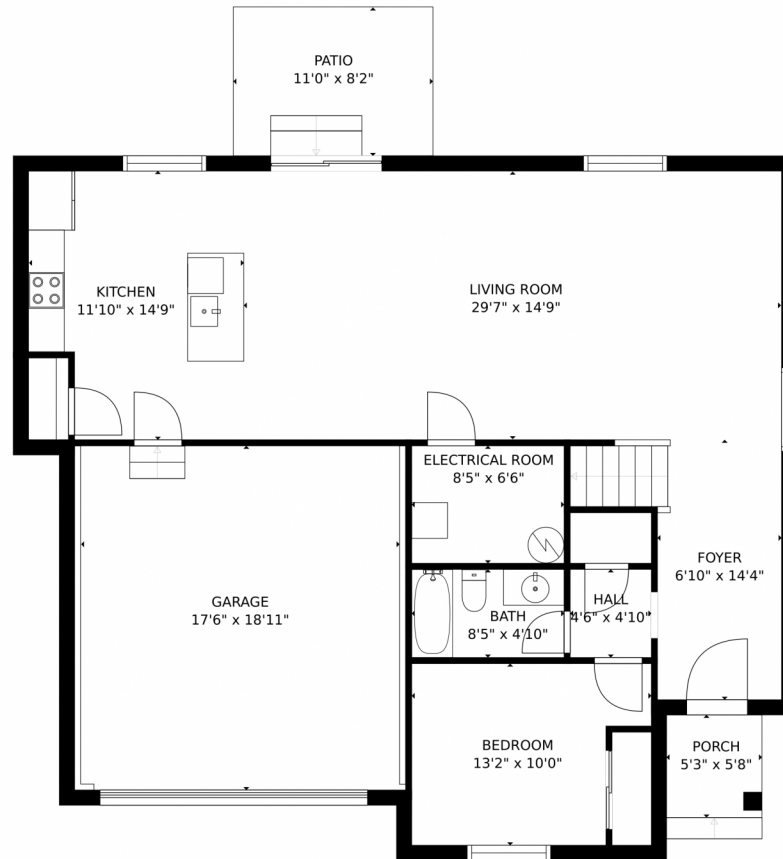
 3/1 Baths



Taylor Haas
303-665-7368
taylorh@coloradorpm.com
<https://www.coloradorpm.com/available-rental-properties-denver>



5993 Mumford Drive, Colorado Springs, CO 80925 – Main Level



GROSS INTERNAL AREA
FLOOR 1: 1009 sq. ft, FLOOR 2: 1267 sq. ft
EXCLUDED AREAS: , GARAGE: 345 sq. ft
PATIO: 90 sq. ft, PORCH: 30 sq. ft
TOTAL: 2275 sq. ft
MEASUREMENTS CALCULATED BY V1Photos.COM ARE DEEMED HIGHLY RELIABLE BUT NOT GUARANTEED.



Disclaimer: Sizes and Dimensions are Approximate, Actual May Vary.



Taylor Haas
303-665-7368
taylorh@coloradorpm.com
<https://www.coloradorpm.com/available-rental-properties-denver>



Scan code
for more
property
details



5993 Mumford Drive, Colorado Springs, CO 80925 – Upper Level



GROSS INTERNAL AREA
FLOOR 1: 1009 sq. ft, FLOOR 2: 1267 sq. ft
EXCLUDED AREAS: , GARAGE: 345 sq. ft
PATIO: 90 sq. ft, PORCH: 30 sq. ft
TOTAL: 2275 sq. ft
MEASUREMENTS CALCULATED BY V1Photos.COM ARE DEEMED HIGHLY RELIABLE BUT NOT GUARANTEED.



Disclaimer: Sizes and Dimensions are Approximate, Actual May Vary.



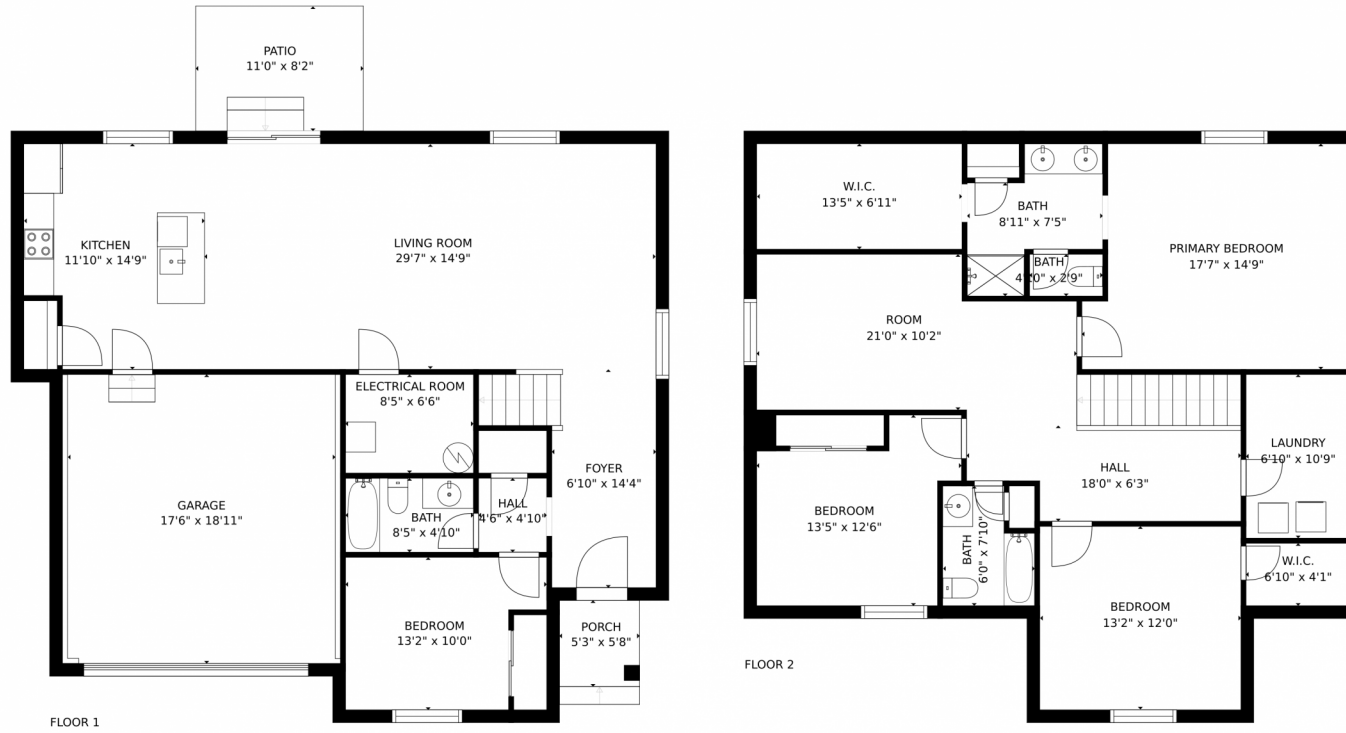
Taylor Haas
303-665-7368
taylorh@coloradorpm.com
<https://www.coloradorpm.com/available-rental-properties-denver>



Scan code
for more
property
details



5993 Mumford Drive, Colorado Springs, CO 80925 – All Levels



GROSS INTERNAL AREA
FLOOR 1: 1009 sq. ft, FLOOR 2: 1267 sq. ft
EXCLUDED AREAS: , GARAGE: 345 sq. ft
PATIO: 90 sq. ft, PORCH: 30 sq. ft
TOTAL: 2275 sq. ft
MEASUREMENTS CALCULATED BY V1Photos.com ARE DEEMED HIGHLY RELIABLE BUT NOT GUARANTEED.



Disclaimer: Sizes and Dimensions are Approximate, Actual May Vary.



Taylor Haas
303-665-7368
taylorh@coloradorpm.com
<https://www.coloradorpm.com/available-rental-properties-denver>



Scan code
for more
property
details

