

Situated along Open Space and Hecla Lake



 Townhouse  2652 SQFT  3 Beds  3/1 Baths  2 Car

PROPERTY DETAILS

Unique opportunity awaits with this stylish, low-maintenance townhome overlooking Hecla Lake! You are greeted with an abundance of natural light, lofty ceilings and gleaming hardwood floors as you enter an open floor plan. The sophisticated chef's kitchen highlights maple cabinets, quartz countertops and stainless steel premium appliances with a breakfast bar outfitted with custom maple and walnut paneling. With expansive windows and a sliding glass door, the dining and living room integrate beautifully to the natural setting leading to your private pergola covered deck. On chilly days, cozy up indoors with a gas fireplace while enjoying the views. Upstairs, a spacious loft offers a flex space or convert into a bedroom. The covetable, lake facing primary bedroom suite features vaulted ceilings, a 5-piece bath with soaking tub and walk-in closet. A full bath with double sinks, secondary bedroom and ample laundry room round out the second floor. The finished basement highlights a 3/4 bath and plenty of space for an office, recreation room or 3rd non-conforming bedroom suite. The attached 2 car garage has extra storage and an EV charger. Designer light fixtures and custom, exotic hardwood floating shelves enhance the home throughout. This location is exceptional! Watch the 4th of July fireworks from your private sanctuary, walk or bike from the adjacent open space to Waneka Lake and trails, minutes from shops and restaurants in downtown Louisville and quick commute to Boulder!



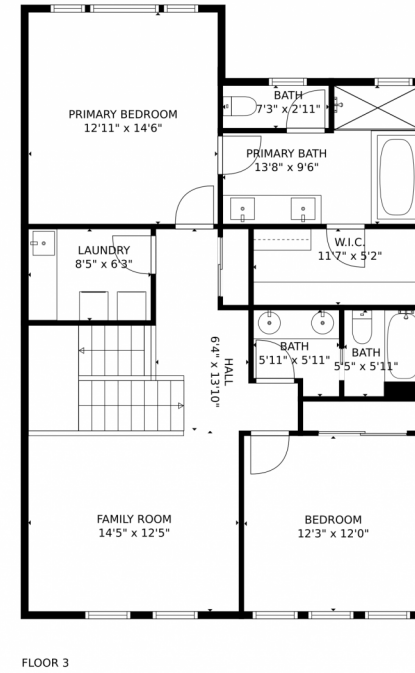
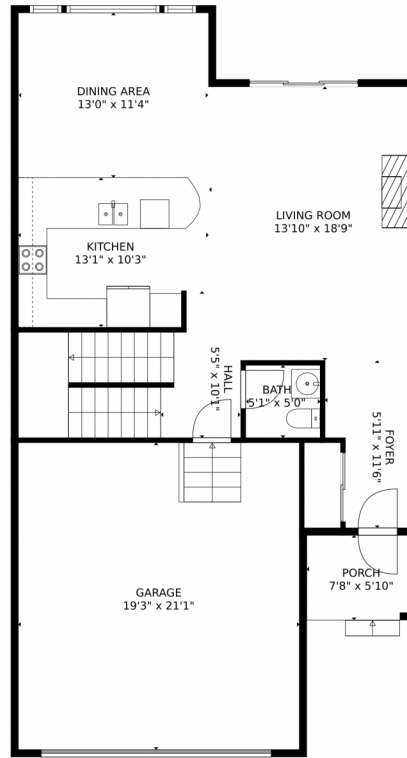
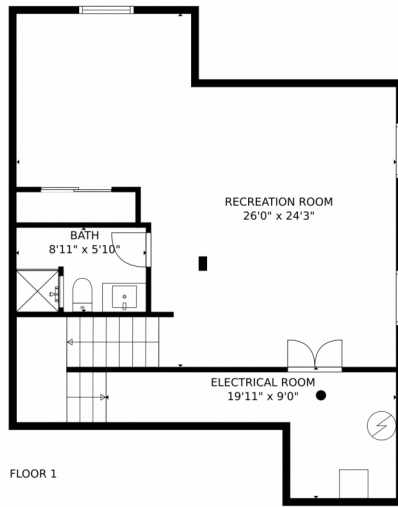
Jessica Lynch
720-556-2833
jessicalynchmurgacz@gmail.com



Jay Kalinski
303-489-1050
jaykalinski@gmail.com



2180 East Hecla Drive, Louisville, CO 80027 – All Levels



GROSS INTERNAL AREA
 FLOOR 1: 698 sq. ft, FLOOR 2: 760 sq. ft
 FLOOR 3: 1041 sq. ft, EXCLUDED AREAS:
 GARAGE: 406 sq. ft, PORCH: 44 sq. ft
 TOTAL: 2498 sq. ft
 MEASUREMENTS CALCULATED BY V1Photos.COM ARE DEEMED HIGHLY RELIABLE BUT NOT GUARANTEED.



Disclaimer: Sizes and Dimensions are Approximate, Actual May Vary.



Jessica Lynch
 720-556-2833
 jessicalynchmurgacz@gmail.com



Jay Kalinski
 303-489-1050
 jaykalinski@gmail.com



Scan code
 for more
 property
 details

