





 Single Family

 1603 SQFT

 3 Beds

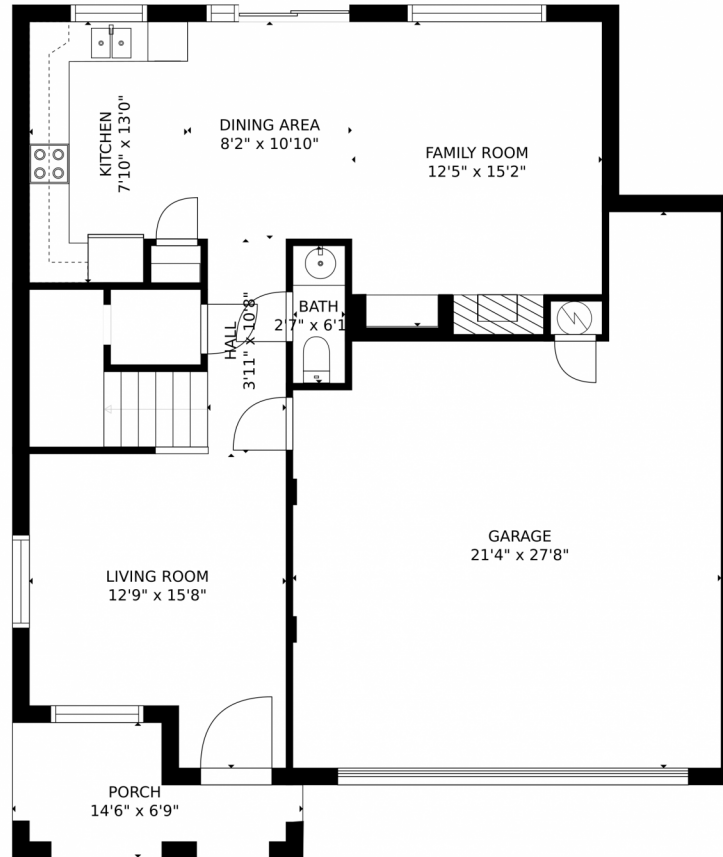
 1/1 Baths



**Taylor Haas**  
303-665-7368  
taylorh@coloradorpm.com  
<https://www.coloradorpm.com/available-rental-properties-denver>



# 9468 Pony Gulch Way, Colorado Springs, CO 80925 – Main Level



GROSS INTERNAL AREA  
FLOOR 1: 701 sq. ft. FLOOR 2: 862 sq. ft  
EXCLUDED AREAS: , GARAGE: 481 sq. ft  
PORCH: 76 sq. ft  
TOTAL: 1563 sq. ft  
MEASUREMENTS CALCULATED BY V1Photos.com ARE DEEMED HIGHLY RELIABLE BUT NOT GUARANTEED.



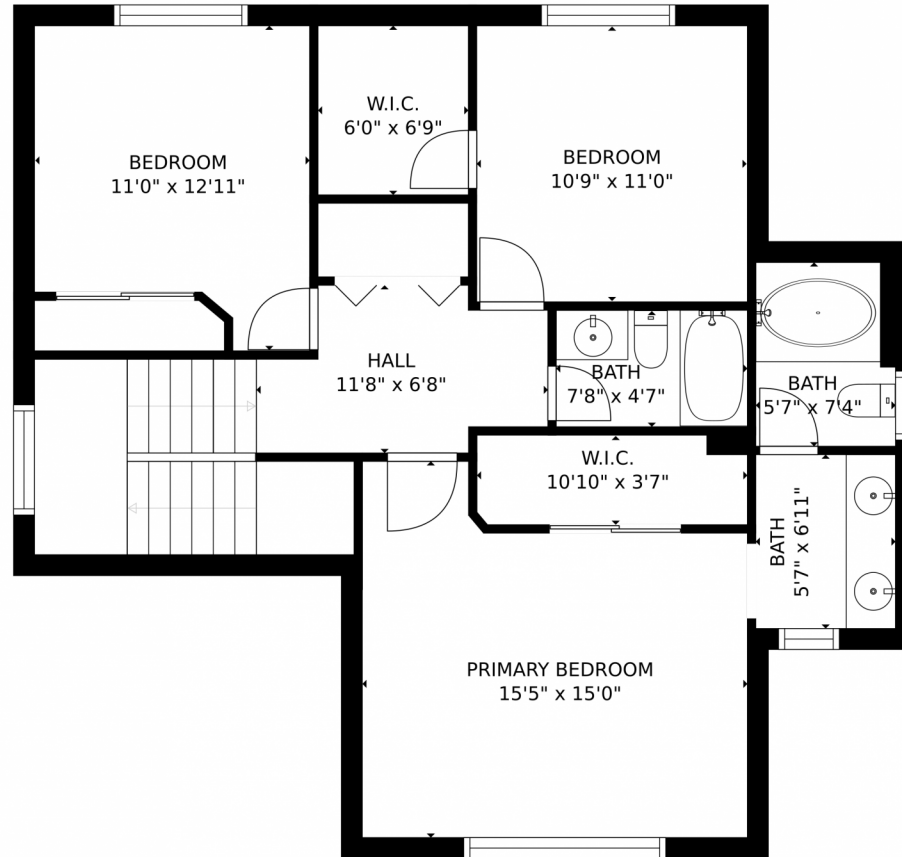
Disclaimer: Sizes and Dimensions are Approximate, Actual May Vary.



**Taylor Haas**  
303-665-7368  
taylorh@coloradorpm.com  
<https://www.coloradorpm.com/available-rental-properties-denv>



9468 Pony Gulch Way, Colorado Springs, CO 80925 – Upper Level



GROSS INTERNAL AREA  
FLOOR 1: 701 sq. ft. FLOOR 2: 862 sq. ft  
EXCLUDED AREAS: , GARAGE: 481 sq. ft  
PORCH: 76 sq. ft  
TOTAL: 1563 sq. ft  
MEASUREMENTS CALCULATED BY V1Photos.COM ARE DEEMED HIGHLY RELIABLE BUT NOT GUARANTEED.



Disclaimer: Sizes and Dimensions are Approximate, Actual May Vary.



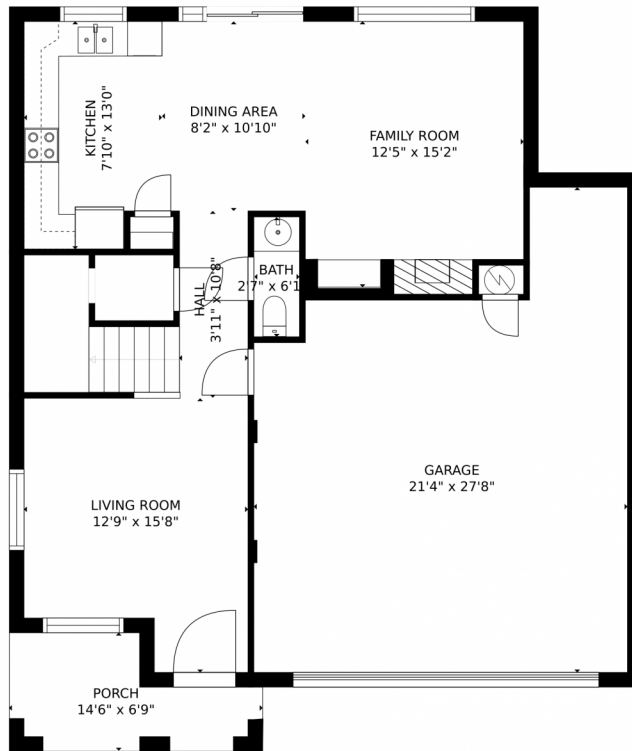
**Taylor Haas**  
303-665-7368  
taylorh@coloradorpm.com  
<https://www.coloradorpm.com/available-rental-properties-denv>



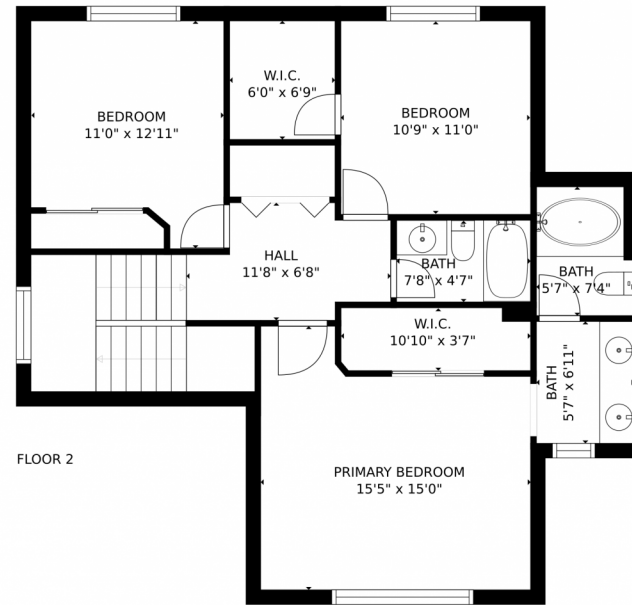
Scan code  
for more  
property  
details



# 9468 Pony Gulch Way, Colorado Springs, CO 80925 – All Levels



FLOOR 1



FLOOR 2

GROSS INTERNAL AREA  
FLOOR 1: 701 sq. ft. FLOOR 2: 862 sq. ft  
EXCLUDED AREAS: , GARAGE: 481 sq. ft  
PORCH: 76 sq. ft  
TOTAL: 1563 sq. ft

MEASUREMENTS CALCULATED BY V1Photos.com ARE DEEMED HIGHLY RELIABLE BUT NOT GUARANTEED.



Disclaimer: Sizes and Dimensions are Approximate, Actual May Vary.



**Taylor Haas**  
303-665-7368  
taylorh@coloradorpm.com  
<https://www.coloradorpm.com/available-rental-properties-denver>



Scan code  
for more  
property  
details

