



 Single Family

 1439 SQFT

 3 Beds

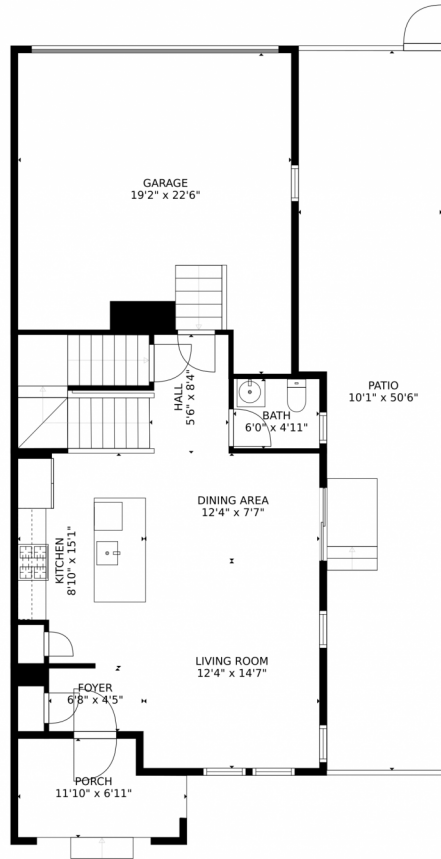
 2/1 Baths



Taylor Haas
303-665-7368
taylorh@coloradorpm.com
<https://www.coloradorpm.com/available-rental-properties-denver>



7626 South Zante Court, Aurora, CO 80016 – Main Level



GROSS INTERNAL AREA
FLOOR 1: 6 sq. ft., FLOOR 2: 602 sq. ft.
FLOOR 3: 775 sq. ft., EXCLUDED AREAS:
UNFINISHED BASEMENT: 561 sq. ft., GARAGE: 386 sq. ft.
PATIO: 455 sq. ft., PORCH: 73 sq. ft.
TOTAL: 1383 sq. ft.

MEASUREMENTS CALCULATED BY V1Photos.com ARE DEEMED HIGHLY RELIABLE BUT NOT GUARANTEED.



Disclaimer: Sizes and Dimensions are Approximate, Actual May Vary.



Taylor Haas

303-665-7368

taylorh@coloradorm.com

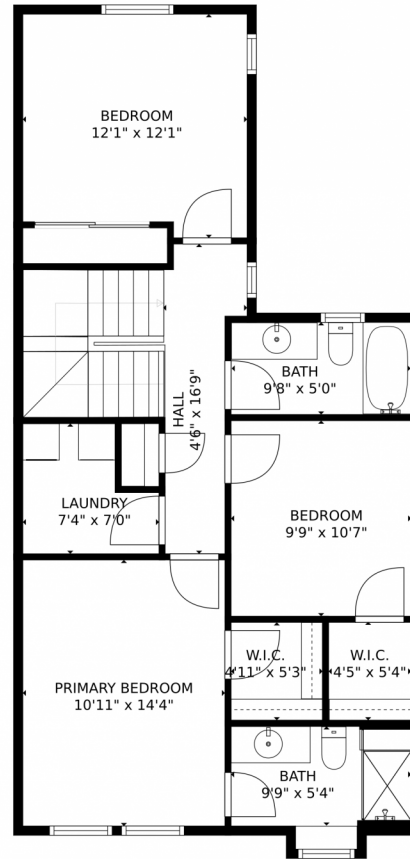
<https://www.coloradorm.com/available-rental-properties-denver>



Scan code
for more
property
details



7626 South Zante Court, Aurora, CO 80016 – Upper Level



GROSS INTERNAL AREA
FLOOR 1: 6 sq. ft., FLOOR 2: 602 sq. ft.
FLOOR 3: 775 sq. ft., EXCLUDED AREAS:
UNFINISHED BASEMENT: 561 sq. ft., GARAGE: 386 sq. ft.
PATIO: 455 sq. ft., PORCH: 73 sq. ft.
TOTAL: 1383 sq. ft.
MEASUREMENTS CALCULATED BY V1Photos.com ARE DEEMED HIGHLY RELIABLE BUT NOT GUARANTEED.



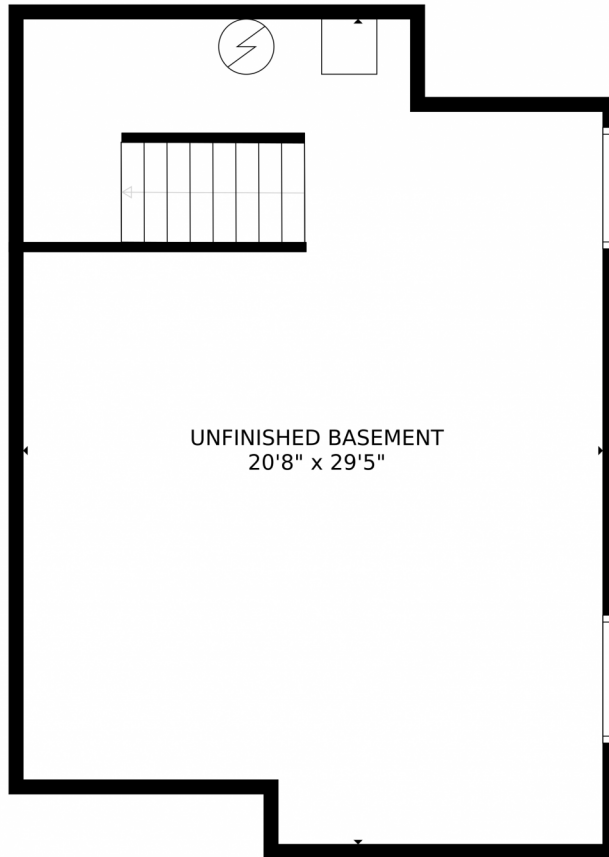
Disclaimer: Sizes and Dimensions are Approximate, Actual May Vary.



Taylor Haas
303-665-7368
taylorh@coloradorpm.com
<https://www.coloradorpm.com/available-rental-properties-denver>



7626 South Zante Court, Aurora, CO 80016 – Lower Level



UNFINISHED BASEMENT
20'8" x 29'5"

GROSS INTERNAL AREA
FLOOR 1: 6 sq. ft., FLOOR 2: 602 sq. ft.
FLOOR 3: 775 sq. ft., EXCLUDED AREAS:
UNFINISHED BASEMENT: 561 sq. ft., GARAGE: 386 sq. ft.
PATIO: 455 sq. ft., PORCH: 73 sq. ft.
TOTAL: 1383 sq. ft.
MEASUREMENTS CALCULATED BY V1Photos.COM ARE DEEMED HIGHLY RELIABLE BUT NOT GUARANTEED.



Disclaimer: Sizes and Dimensions are Approximate, Actual May Vary.



Taylor Haas
303-665-7368
taylorh@coloradorpm.com
<https://www.coloradorpm.com/available-rental-properties-denver>



7626 South Zante Court, Aurora, CO 80016 – All Levels



GROSS INTERNAL AREA
FLOOR 1: 6 sq. ft., FLOOR 2: 602 sq. ft.
FLOOR 3: 775 sq. ft., EXCLUDED AREAS:
UNFINISHED BASEMENT: 561 sq. ft., GARAGE: 386 sq. ft.
PATIO: 455 sq. ft., PORCH: 73 sq. ft.
TOTAL: 1383 sq. ft.
MEASUREMENTS CALCULATED BY V1Photos.com ARE DEEMED HIGHLY RELIABLE BUT NOT GUARANTEED.

Disclaimer: Sizes and Dimensions are Approximate, Actual May Vary.



Taylor Haas
303-665-7368
taylorh@coloradorpm.com
<https://www.coloradorpm.com/available-rental-properties-denver>



Scan code
for more
property
details

