



34422 Chilton Ave
Pine, CO 80470

MLS # 3756647
PRICE \$719,000



Single Family



2774 SQFT



3 Beds



2/1 Baths



2 Car



1.69 Acre

PROPERTY DETAILS

Welcome to this wonderful raised ranch mountain home with 1.69 acres of serene mountain land to call your own! *Updated kitchen with granite counters, stainless appliances, pull-out shelves & plenty of storage with large pantry *Eating area provides direct access to secondary upper deck, perfect for relaxing or grilling *Main living area features vaulted ceilings, skylights & gas fireplace with quintessential floor to ceiling stone work *Bask in the natural light of the many windows providing views to your beautiful property *Relax in your generous primary suite with walk-in closet & 5-piece primary bath *Adjoining office through French doors would also make a great art studio, work-out space or nursery *Beautiful hardwood floors throughout main level *2 additional bedrooms are bright & spacious with lots of natural light *Lower living area features another gas fireplace & walk-out access to lower flagstone patio & gorgeous lot *Go for a hike out your back gate or sit & enjoy the views & solitude on your huge covered front deck *Enjoy your homegrown veggies from the greenhouse on the 3rd deck *2 car heated garage, plus additional 1 space carport & plenty of room for RV parking & lots of recreational toys with 2 paved driveways *Newer roof & newer central a/c *Within 1 mile of Pine Junction & easily accessed by a publicly maintained paved road *Walking distance to coffee, dining & convenient store *Conveniently located off 285 near a Park-n-Ride & easy commute to Littleton (30min), Golden (40min), Evergreen (20min), Conifer & Baily (12min), Denver (45min) *Don't miss out on the



Amy Cammack

303-981-4571

amy@cammackgroup.com



Scan code
for more
property
details



opportunity to own a bit of mountain peace & serenity!

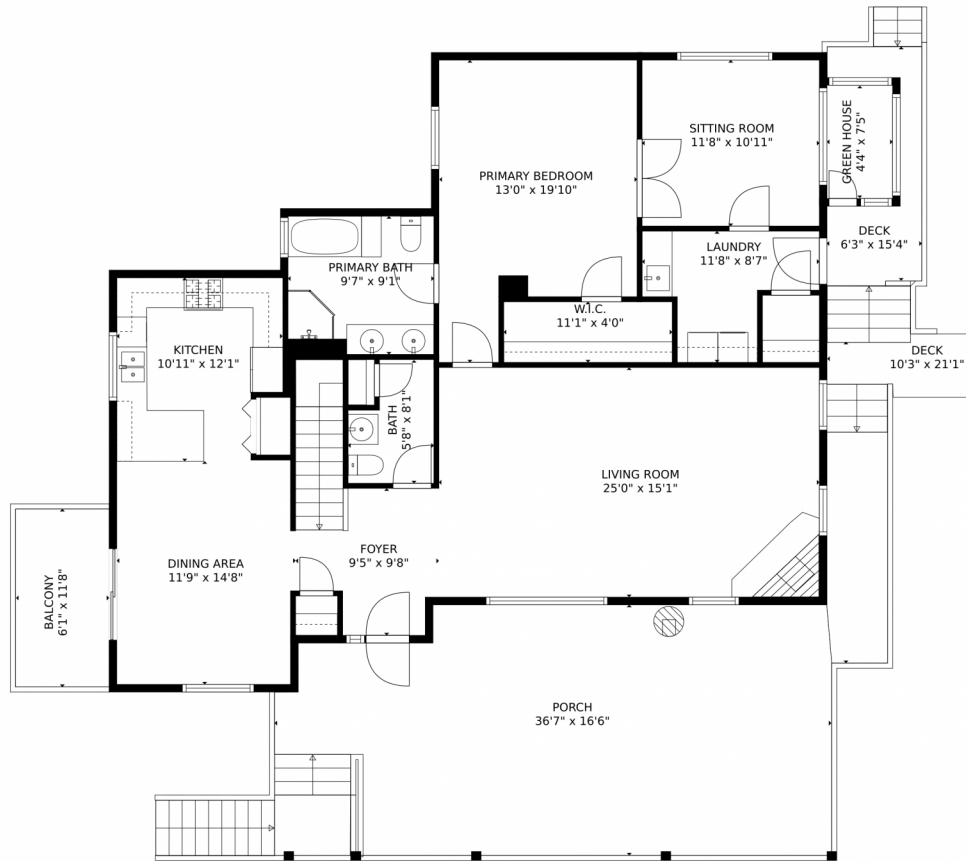


Amy Cammack
303-981-4571
amy@cammackgroup.com



Scan code
for more
property
details

34422 Chilton Ave, Pine, CO 80470 – Main Level



GROSS INTERNAL AREA
FLOOR 1: 1040 sq. ft. FLOOR 2: 1489 sq. ft.
EXCLUDED AREAS: , PATIO: 465 sq. ft
BALCONY: 72 sq. ft. DECK: 185 sq. ft
PORCH: 538 sq. ft
TOTAL: 2529 sq. ft

MEASUREMENTS CALCULATED BY V1Photos.COM ARE DEEMED HIGHLY RELIABLE BUT NOT GUARANTEED.



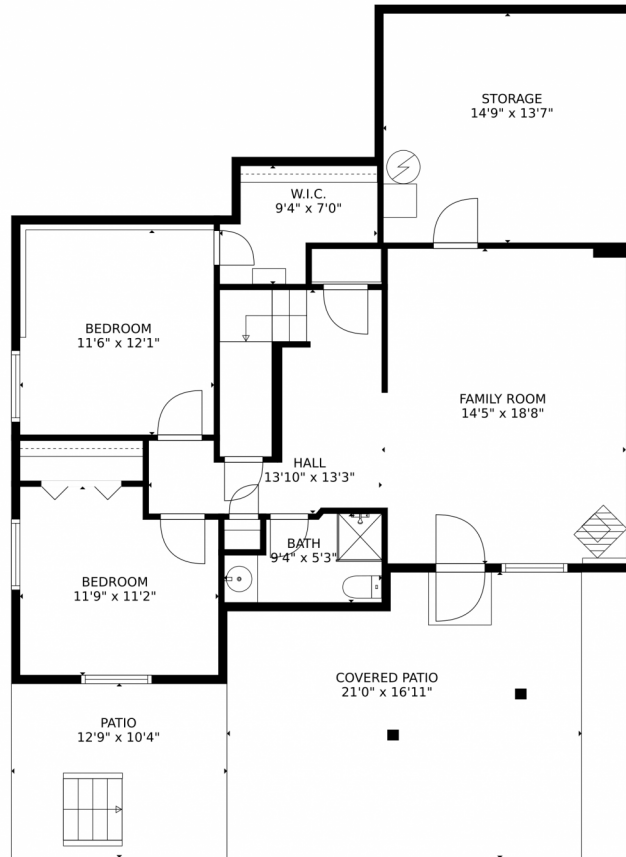
Disclaimer: Sizes and Dimensions are Approximate, Actual May Vary.



Amy Cammack
303-981-4571
amy@cammackgroup.com



34422 Chilton Ave, Pine, CO 80470 – Lower Level



GROSS INTERNAL AREA
FLOOR 1: 1040 sq. ft. FLOOR 2: 1489 sq. ft.
EXCLUDED AREAS: , PATIO: 465 sq. ft.
BALCONY: 72 sq. ft. DECK: 185 sq. ft.
PORCH: 538 sq. ft.
TOTAL: 2529 sq. ft.

MEASUREMENTS CALCULATED BY V1Photos.COM ARE DEEMED HIGHLY RELIABLE BUT NOT GUARANTEED.



Disclaimer: Sizes and Dimensions are Approximate, Actual May Vary.



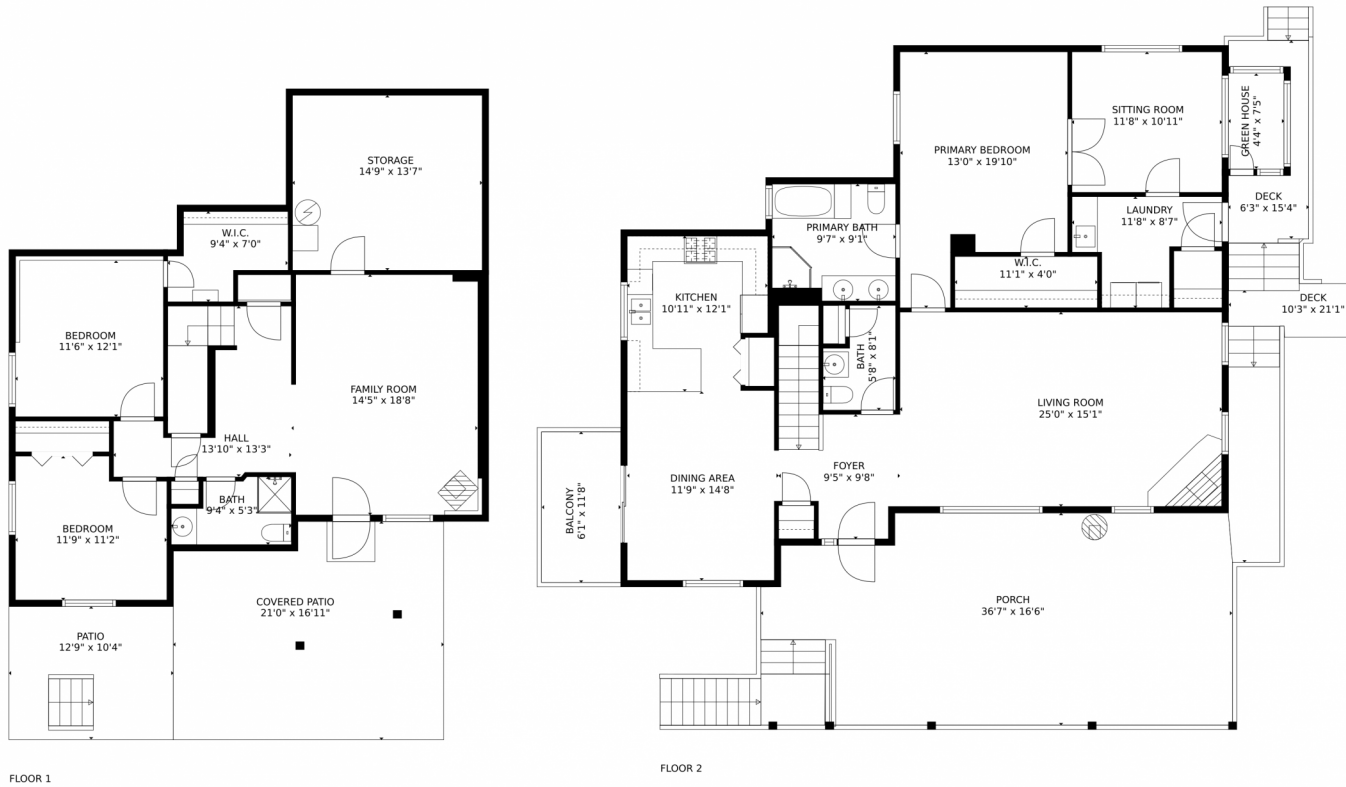
Amy Cammack
303-981-4571
amy@cammackgroup.com



Scan code for more property details



34422 Chilton Ave, Pine, CO 80470 – All Levels



GROSS INTERNAL AREA
FLOOR 1: 1040 sq. ft. FLOOR 2: 1489 sq. ft.
EXCLUDED AREAS: , PATIO: 465 sq. ft.
BALCONY: 72 sq. ft. DECK: 185 sq. ft.
PORCH: 538 sq. ft.
TOTAL: 2529 sq. ft.

MEASUREMENTS CALCULATED BY V1Photos.COM ARE DEEMED HIGHLY RELIABLE BUT NOT GUARANTEED.



Disclaimer: Sizes and Dimensions are Approximate, Actual May Vary.



Amy Cammack
303-981-4571
amy@cammackgroup.com

