




 Single Family

 950 SQFT

 2 Beds

 1 Baths

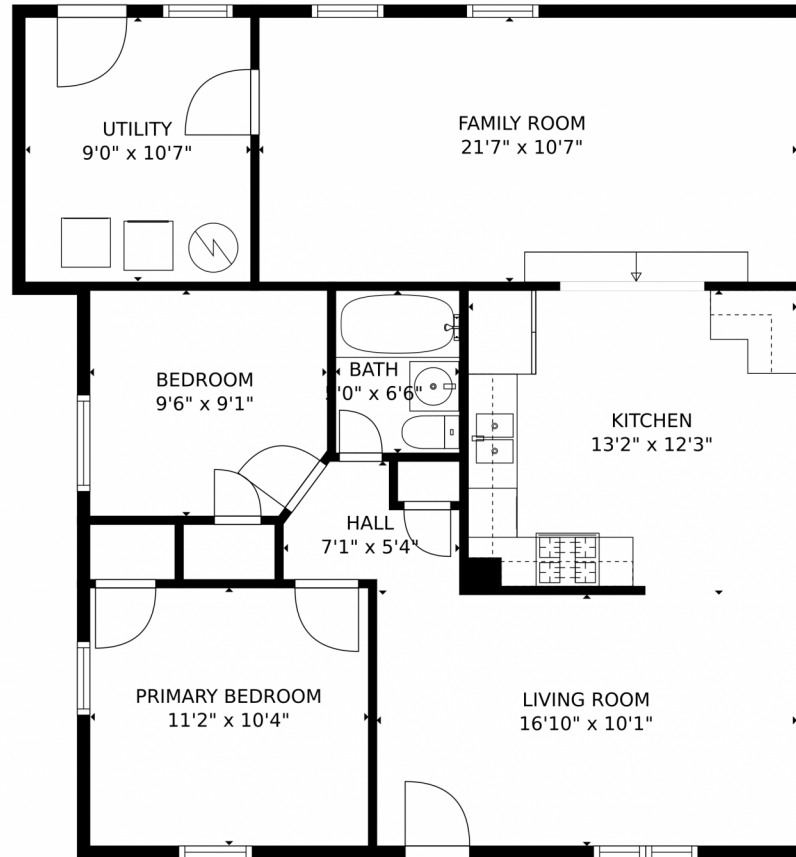
 2 Car



Joey Hoiescu
619-806-7014
joey@luxdenver.com
<https://www.thepropertysomm.com>



930 Grove Street, Denver, CO 80204 – Main Floor



GROSS INTERNAL AREA
FLOOR 1: 971 sq. ft, FLOOR 2: 177 sq. ft
EXCLUDED AREAS: , GARAGE: 292 sq. ft
PORCH: 15 sq. ft
TOTAL: 1149 sq. ft
MEASUREMENTS CALCULATED BY V1Photos.COM ARE DEEMED HIGHLY RELIABLE BUT NOT GUARANTEED.



Disclaimer: Sizes and Dimensions are Approximate, Actual May Vary.

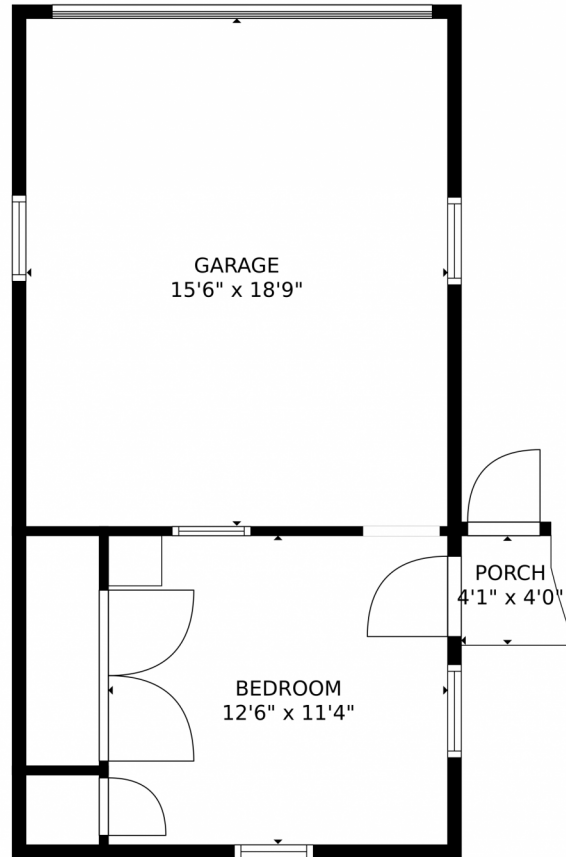


Joey Hoiescu
619-806-7014
joey@luxdenver.com
<https://www.thepropertysomm.com>



Scan code
for more
property
details

930 Grove Street, Denver, CO 80204 – Detached Garage



GROSS INTERNAL AREA
FLOOR 1: 971 sq. ft, FLOOR 2: 177 sq. ft
EXCLUDED AREAS: , GARAGE: 292 sq. ft
PORCH: 15 sq. ft
TOTAL: 1149 sq. ft

MEASUREMENTS CALCULATED BY V1Photos.COM ARE DEEMED HIGHLY RELIABLE BUT NOT GUARANTEED.



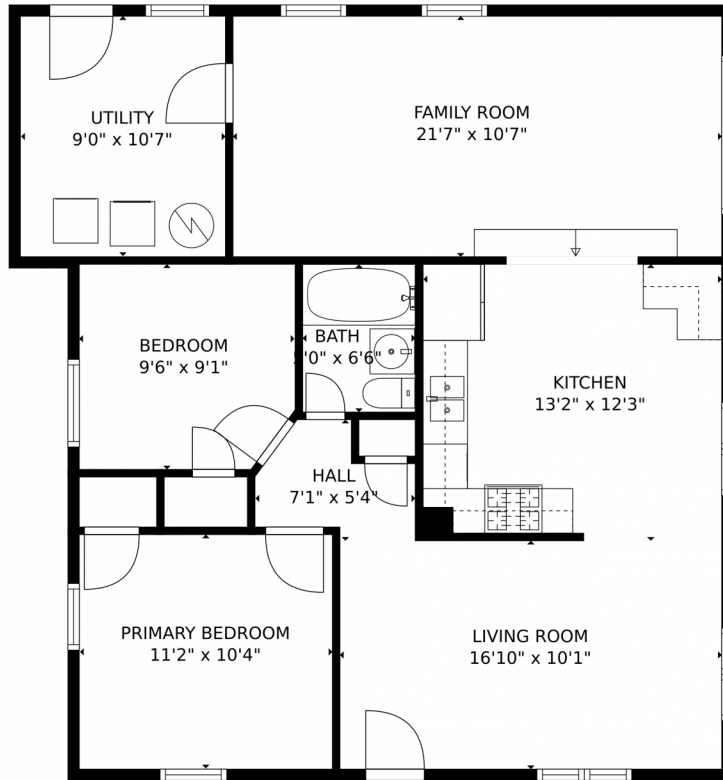
Disclaimer: Sizes and Dimensions are Approximate, Actual May Vary.



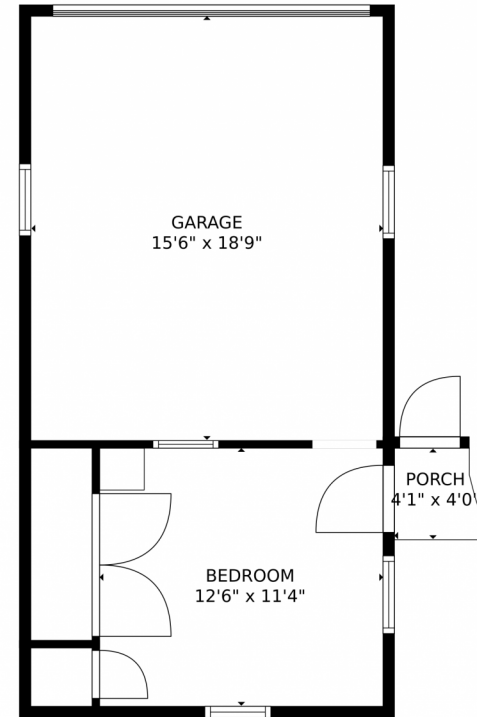
Joey Hoiescu
619-806-7014
joey@luxdenver.com
<https://www.thepropertysomm.com>



Scan code
for more
property
details



FLOOR 1



FLOOR 2

GROSS INTERNAL AREA
FLOOR 1: 971 sq. ft. FLOOR 2: 177 sq. ft.
EXCLUDED AREAS: , GARAGE: 292 sq. ft.
PORCH: 15 sq. ft.
TOTAL: 1149 sq. ft.

MEASUREMENTS CALCULATED BY V1Photos.com ARE DEEMED HIGHLY RELIABLE BUT NOT GUARANTEED.



Disclaimer: Sizes and Dimensions are Approximate, Actual May Vary.



Joey Hoiescu
619-806-7014
joey@luxdenver.com
<https://www.thepropertysomm.com>



Scan code
for more
property
details