




 Single Family

 3147 SQFT

 6 Beds

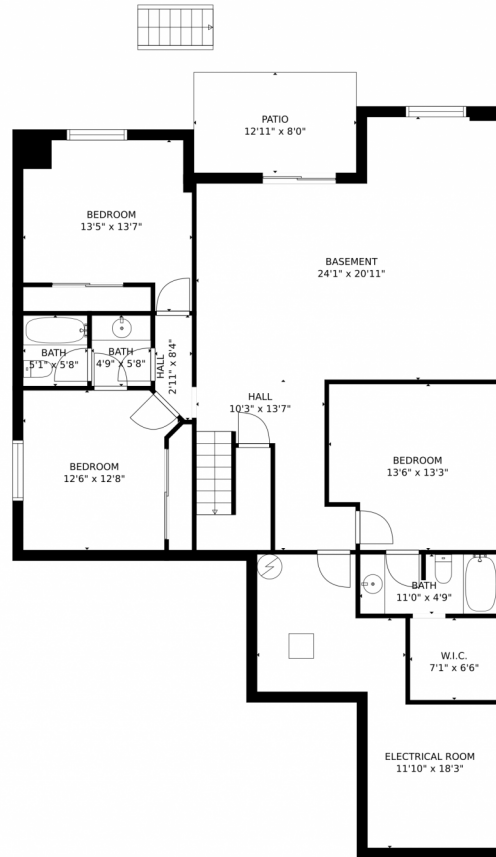
 3 Baths



Taylor Haas
303-665-7368
taylorh@coloradorpm.com
<https://www.coloradorpm.com/available-rental-properties-denver>



6792 Yocona Drive, Colorado Springs, CO 80925 – Lower Level



GROSS INTERNAL AREA
FLOOR 1: 1551 sq. ft, FLOOR 2: 1568 sq. ft
EXCLUDED AREAS: , PATIO: 104 sq. ft
GARAGE: 579 sq. ft, DECK: 139 sq. ft
PORCH: 50 sq. ft
TOTAL: 3119 sq. ft

MEASUREMENTS CALCULATED BY V1Photos.COM ARE DEEMED HIGHLY RELIABLE BUT NOT GUARANTEED.



Disclaimer: Sizes and Dimensions are Approximate, Actual May Vary.



Taylor Haas

303-665-7368

taylorh@coloradorpm.com

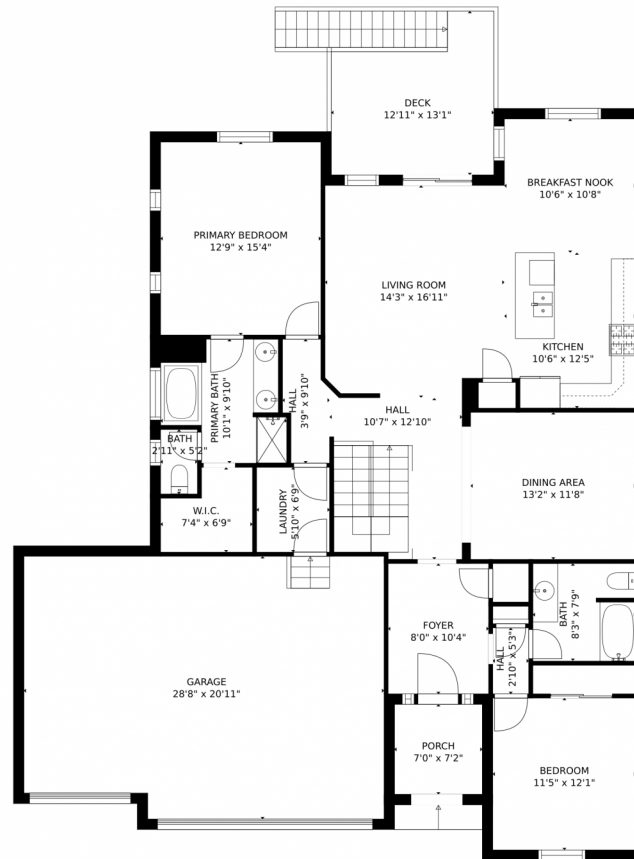
<https://www.coloradorpm.com/available-rental-properties-denver>



Scan code
for more
property
details



6792 Yocona Drive, Colorado Springs, CO 80925 – Main Level



GROSS INTERNAL AREA
FLOOR 1: 1551 sq. ft, FLOOR 2: 1568 sq. ft
EXCLUDED AREAS: , PATIO: 104 sq. ft
GARAGE: 579 sq. ft, DECK: 139 sq. ft
PORCH: 50 sq. ft
TOTAL: 3119 sq. ft

MEASUREMENTS CALCULATED BY V1Photos.COM ARE DEEMED HIGHLY RELIABLE BUT NOT GUARANTEED.



Disclaimer: Sizes and Dimensions are Approximate, Actual May Vary.



Taylor Haas

303-665-7368

taylorh@coloradorpm.com

<https://www.coloradorpm.com/available-rental-properties-denver>



Scan code
for more
property
details



6792 Yocona Drive, Colorado Springs, CO 80925 – All Levels



GROSS INTERNAL AREA
 FLOOR 1: 1551 sq. ft, FLOOR 2: 1568 sq. ft
 EXCLUDED AREAS: , PATIO: 104 sq. ft
 GARAGE: 579 sq. ft, DECK: 139 sq. ft
 PORCH: 50 sq. ft
 TOTAL: 3119 sq. ft

MEASUREMENTS CALCULATED BY V1Photos.com ARE DEEMED HIGHLY RELIABLE BUT NOT GUARANTEED.

Disclaimer: Sizes and Dimensions are Approximate, Actual May Vary.



Taylor Haas

303-665-7368

taylorh@coloradorpm.com

<https://www.coloradorpm.com/available-rental-properties-denver>



Scan code
 for more
 property
 details

