



Single Family



2575 SQFT



5 Beds



3/1 Baths



2 Car



0.12 Acre

## PROPERTY DETAILS

Welcome to this spacious and well-maintained four-level home with over 2500 square feet located in Stetson Hills! The main level boasts an open floor plan, featuring a bright and airy living room, a cozy dining area that leads to a nicely landscaped, fenced backyard, and an efficient eat-in kitchen. Upstairs, you'll find three bedrooms, including a primary suite with a private bathroom on its own level with a walk-in closet. The lower level is perfect for entertaining, with a large family room which has a gas fireplace to keep you warm on those cold Colorado nights. Find MORE space in the basement to include a fifth bedroom with an attached bathroom; an office; and a play area for the kids or for you to get that workout in! Other features of this beautiful home include hardwood floors, newer water heater, seller-owned solar panels, A/C, fenced backyard, and a two-car attached garage. Conveniently located near Highway 83, close to parks, schools, shopping, and restaurants. Don't miss your chance to own this stunning home!



Heather Hilton

719-243-0094

heathersellsco@gmail.com

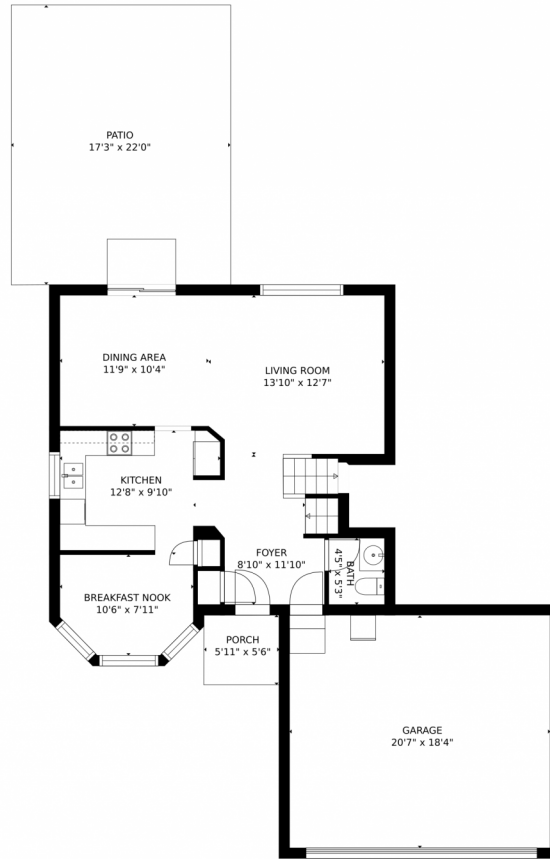
<https://www.bluespring-co.com/>



Scan code  
for more  
property  
details



# 6296 Grand Mesa Drive, Colorado Springs, CO 80923 — Main Level



GROSS INTERNAL AREA  
FLOOR 1: 585 sq. ft. FLOOR 2: 341 sq. ft.  
FLOOR 3: 636 sq. ft. FLOOR 4: 304 sq. ft.  
FLOOR 5: 564 sq. ft. EXCLUDED AREAS:  
GARAGE: 378 sq. ft. PATIO: 382 sq. ft.  
PORCH: 33 sq. ft.  
TOTAL: 2429 sq. ft.

MEASUREMENTS CALCULATED BY V1Photos.COM ARE DEEMED HIGHLY RELIABLE BUT NOT GUARANTEED.



Disclaimer: Sizes and Dimensions are Approximate, Actual May Vary.



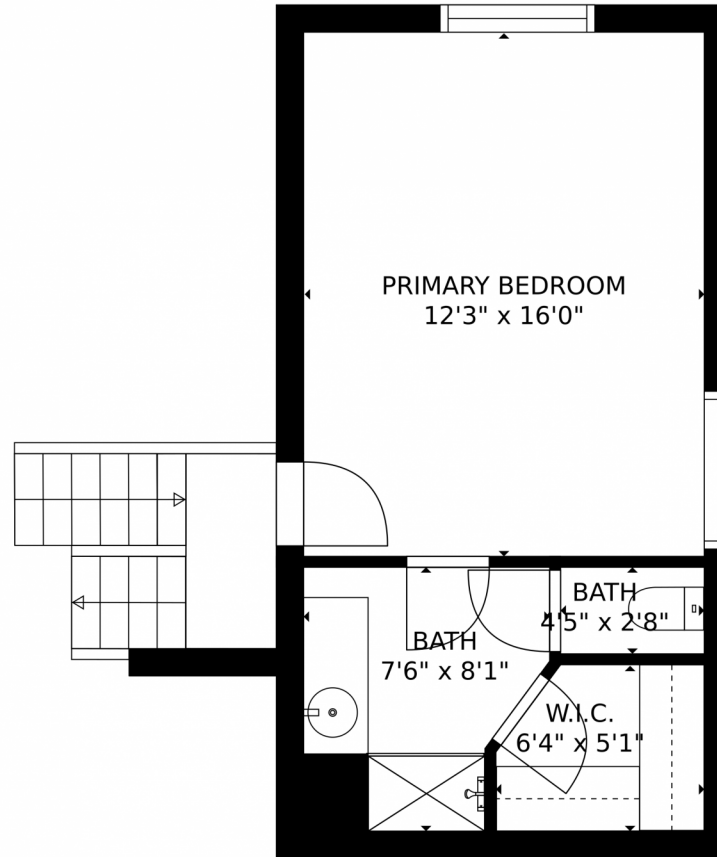
**Heather Hilton**  
719-243-0094  
heathersellsco@gmail.com  
<https://www.bluespring-co.com/>



Scan code  
for more  
property  
details



6296 Grand Mesa Drive, Colorado Springs, CO 80923 — Primary Bedroom



GROSS INTERNAL AREA  
FLOOR 1: 585 sq. ft. FLOOR 2: 341 sq. ft.  
FLOOR 3: 636 sq. ft. FLOOR 4: 304 sq. ft.  
FLOOR 5: 564 sq. ft. EXCLUDED AREAS:  
GARAGE: 378 sq. ft. PATIO: 382 sq. ft.  
PORCH: 33 sq. ft.  
TOTAL: 2429 sq. ft.

MEASUREMENTS CALCULATED BY V1Photos.com ARE DEEMED HIGHLY RELIABLE BUT NOT GUARANTEED.



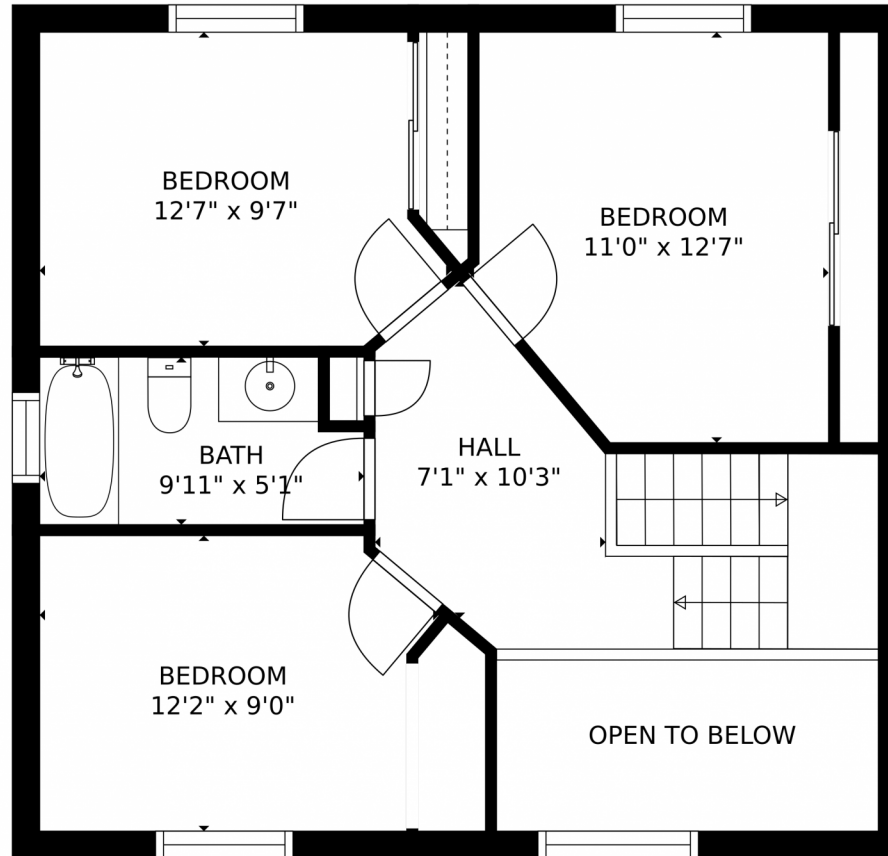
Disclaimer: Sizes and Dimensions are Approximate, Actual May Vary.



**Heather Hilton**  
719-243-0094  
heathersellsco@gmail.com  
<https://www.bluespring-co.com/>



6296 Grand Mesa Drive, Colorado Springs, CO 80923 — Upper Level



GROSS INTERNAL AREA  
FLOOR 1: 585 sq. ft. FLOOR 2: 341 sq. ft.  
FLOOR 3: 636 sq. ft. FLOOR 4: 304 sq. ft.  
FLOOR 5: 564 sq. ft. EXCLUDED AREAS:  
GARAGE: 378 sq. ft. PATIO: 382 sq. ft.  
PORCH: 33 sq. ft.  
TOTAL: 2429 sq. ft.

MEASUREMENTS CALCULATED BY V1Photos.COM ARE DEEMED HIGHLY RELIABLE BUT NOT GUARANTEED.



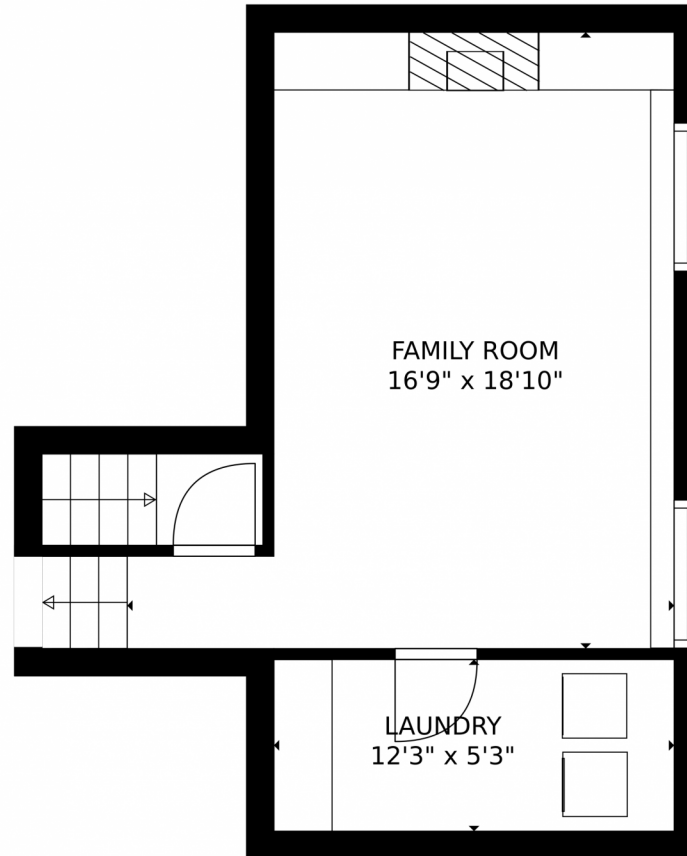
Disclaimer: Sizes and Dimensions are Approximate, Actual May Vary.



**Heather Hilton**  
719-243-0094  
heathersellsco@gmail.com  
<https://www.bluespring-co.com/>



6296 Grand Mesa Drive, Colorado Springs, CO 80923 — Family Room



GROSS INTERNAL AREA  
FLOOR 1: 585 sq. ft. FLOOR 2: 341 sq. ft.  
FLOOR 3: 636 sq. ft. FLOOR 4: 304 sq. ft.  
FLOOR 5: 564 sq. ft. EXCLUDED AREAS:  
GARAGE: 378 sq. ft. PATIO: 382 sq. ft.  
PORCH: 33 sq. ft.  
TOTAL: 2429 sq. ft.

MEASUREMENTS CALCULATED BY V1Photos.COM ARE DEEMED HIGHLY RELIABLE BUT NOT GUARANTEED.



Disclaimer: Sizes and Dimensions are Approximate, Actual May Vary.



**Heather Hilton**

719-243-0094

heathersellsco@gmail.com

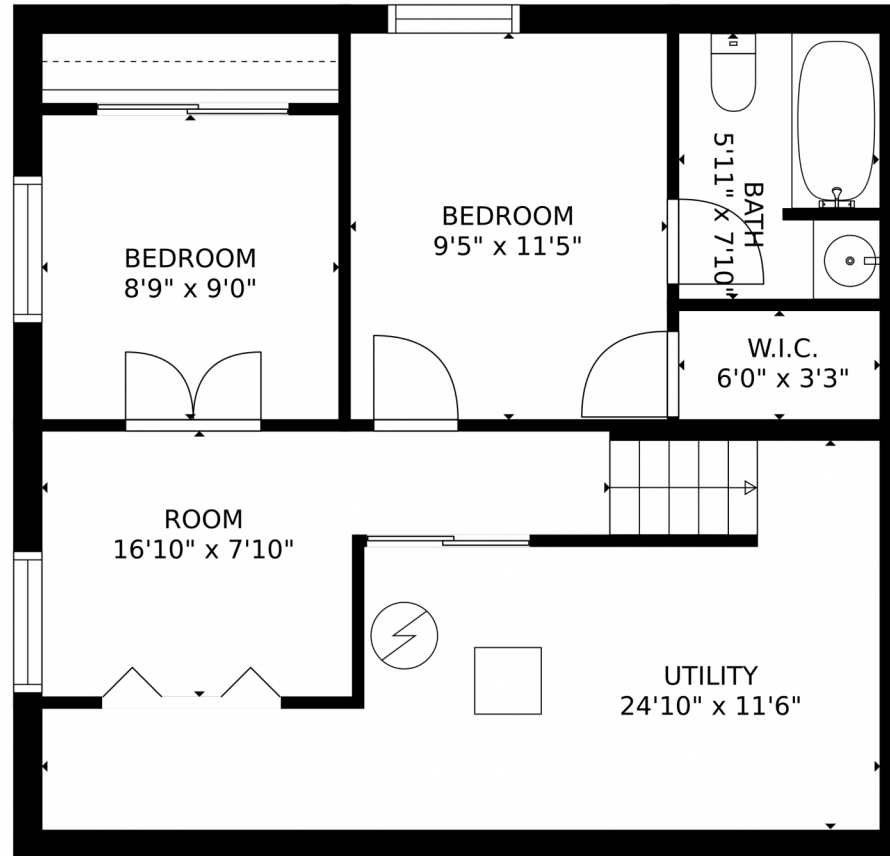
<https://www.bluespring-co.com/>



Scan code  
for more  
property  
details



6296 Grand Mesa Drive, Colorado Springs, CO 80923 – Lower Level



GROSS INTERNAL AREA  
FLOOR 1: 585 sq. ft. FLOOR 2: 341 sq. ft.  
FLOOR 3: 636 sq. ft. FLOOR 4: 304 sq. ft.  
FLOOR 5: 564 sq. ft. EXCLUDED AREAS:  
GARAGE: 378 sq. ft. PATIO: 382 sq. ft.  
PORCH: 33 sq. ft.  
TOTAL: 2429 sq. ft.

MEASUREMENTS CALCULATED BY V1Photos.COM ARE DEEMED HIGHLY RELIABLE BUT NOT GUARANTEED.



Disclaimer: Sizes and Dimensions are Approximate, Actual May Vary.



**Heather Hilton**  
719-243-0094  
heathersellsco@gmail.com  
<https://www.bluespring-co.com/>



# 6296 Grand Mesa Drive, Colorado Springs, CO 80923 – All Levels



GROSS INTERNAL AREA  
 FLOOR 1: 585 sq. ft. FLOOR 2: 341 sq. ft.  
 FLOOR 3: 636 sq. ft. FLOOR 4: 304 sq. ft.  
 FLOOR 5: 564 sq. ft. EXCLUDED AREAS:  
 GARAGE: 378 sq. ft. PATIO: 382 sq. ft.  
 PORCH: 33 sq. ft.  
 TOTAL: 2429 sq. ft.

MEASUREMENTS CALCULATED BY V1Photos.com ARE DEEMED HIGHLY RELIABLE BUT NOT GUARANTEED.



Disclaimer: Sizes and Dimensions are Approximate, Actual May Vary.



**Heather Hilton**  
 719-243-0094  
 heathersellsco@gmail.com  
<https://www.bluespring-co.com/>



Scan code  
 for more  
 property  
 details

