




 Single Family

 1577 SQFT

 3 Beds

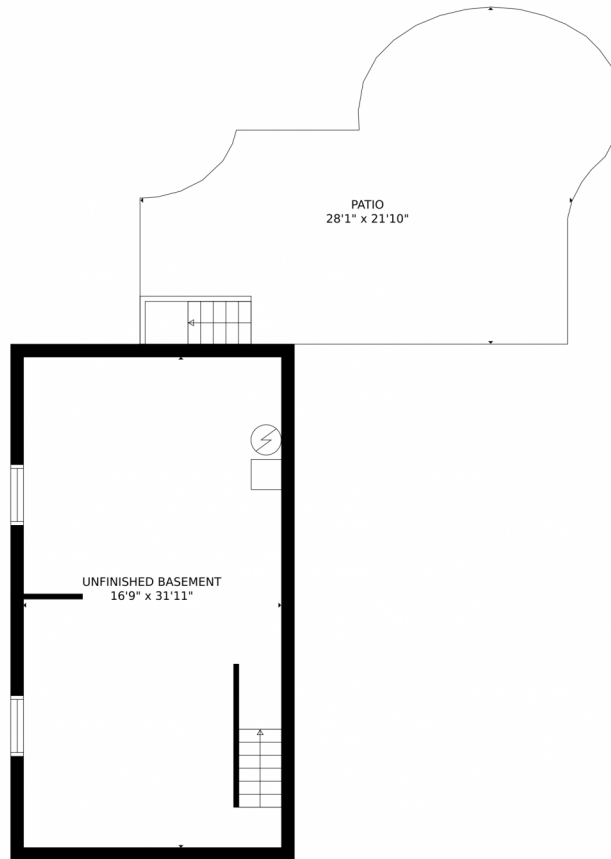
 2 Baths



**Taylor Haas**  
303-665-7368  
taylorh@coloradorpm.com  
<https://www.coloradorpm.com/available-rental-properties-denver>



# 2234 Streambank Drive, Colorado Springs, CO 80951 — Lower Level



GROSS INTERNAL AREA  
FLOOR 1: 1 sq. ft, FLOOR 2: 573 sq. ft  
FLOOR 3: 821 sq. ft, EXCLUDED AREAS:  
UNFINISHED BASEMENT: 534 sq. ft, PATIO: 487 sq. ft  
GARAGE: 553 sq. ft, PORCH: 102 sq. ft  
TOTAL: 1395 sq. ft

MEASUREMENTS CALCULATED BY V1Photos.com ARE DEEMED HIGHLY RELIABLE BUT NOT GUARANTEED.

Disclaimer: Sizes and Dimensions are Approximate, Actual May Vary.



**Taylor Haas**

303-665-7368

taylorh@coloradorpm.com

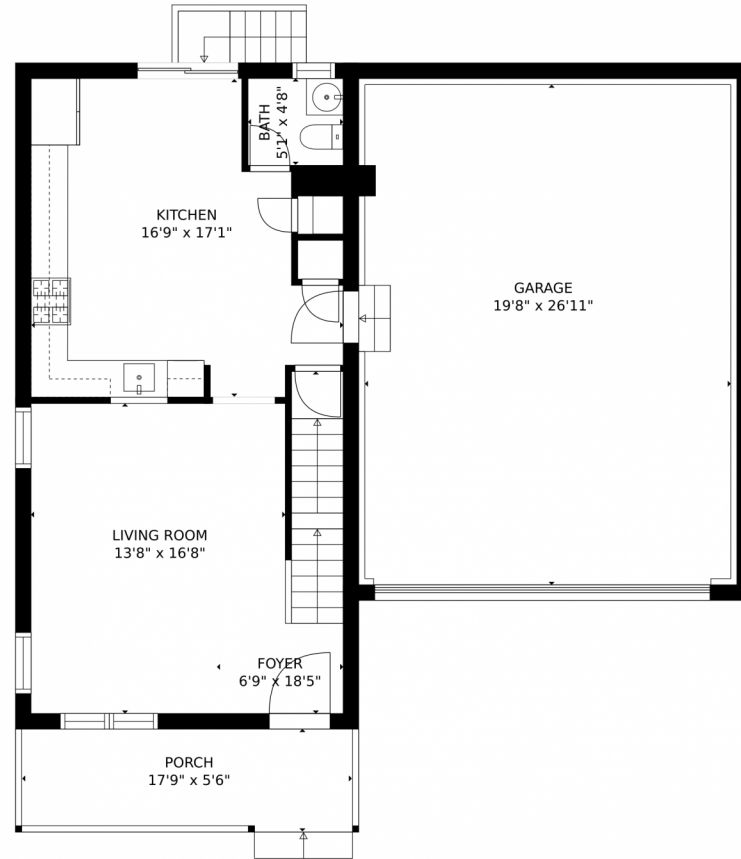
<https://www.coloradorpm.com/available-rental-properties-denver>



Scan code  
for more  
property  
details



# 2234 Streambank Drive, Colorado Springs, CO 80951 — Main Level



GROSS INTERNAL AREA  
FLOOR 1: 1 sq. ft., FLOOR 2: 573 sq. ft.  
FLOOR 3: 821 sq. ft., EXCLUDED AREAS:  
UNFINISHED BASEMENT: 534 sq. ft., PATIO: 487 sq. ft.  
GARAGE: 553 sq. ft., PORCH: 102 sq. ft.  
TOTAL: 1395 sq. ft.

MEASUREMENTS CALCULATED BY V1Photos.com ARE DEEMED HIGHLY RELIABLE BUT NOT GUARANTEED.



Disclaimer: Sizes and Dimensions are Approximate, Actual May Vary.



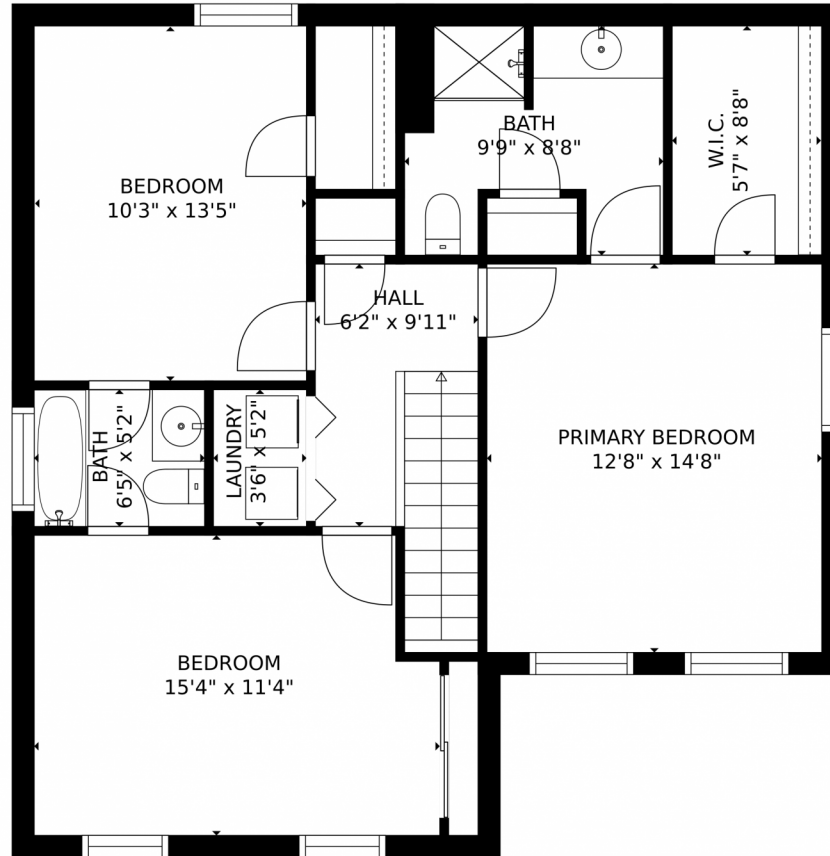
**Taylor Haas**  
303-665-7368  
taylorh@coloradorpm.com  
<https://www.coloradorpm.com/available-rental-properties-denver>



Scan code  
for more  
property  
details



# 2234 Streambank Drive, Colorado Springs, CO 80951 — Upper Level



GROSS INTERNAL AREA  
FLOOR 1: 1 sq. ft., FLOOR 2: 573 sq. ft.  
FLOOR 3: 821 sq. ft., EXCLUDED AREAS:  
UNFINISHED BASEMENT: 534 sq. ft., PATIO: 487 sq. ft.  
GARAGE: 553 sq. ft., PORCH: 102 sq. ft.  
TOTAL: 1395 sq. ft.  
MEASUREMENTS CALCULATED BY V1Photos.COM ARE DEEMED HIGHLY RELIABLE BUT NOT GUARANTEED.



Disclaimer: Sizes and Dimensions are Approximate, Actual May Vary.



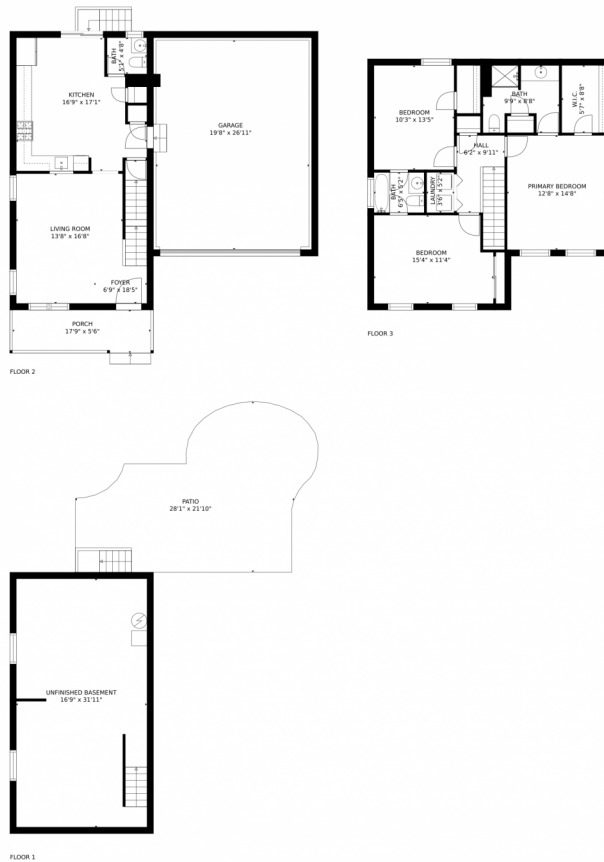
**Taylor Haas**  
303-665-7368  
taylorh@coloradorpm.com  
<https://www.coloradorpm.com/available-rental-properties-denver>



Scan code  
for more  
property  
details



# 2234 Streambank Drive, Colorado Springs, CO 80951 — All Levels



GROSS INTERNAL AREA  
FLOOR 1: 1 sq. ft., FLOOR 2: 573 sq. ft.  
FLOOR 3: 821 sq. ft., EXCLUDED AREAS:  
UNFINISHED BASEMENT: 534 sq. ft., PATIO: 487 sq. ft.  
GARAGE: 553 sq. ft., PORCH: 102 sq. ft.  
TOTAL: 1395 sq. ft.

MEASUREMENTS CALCULATED BY V1Photos.com ARE DEEMED HIGHLY RELIABLE BUT NOT GUARANTEED.



Disclaimer: Sizes and Dimensions are Approximate, Actual May Vary.



**Taylor Haas**

303-665-7368

taylorh@coloradorpm.com

<https://www.coloradorpm.com/available-rental-properties-denver>



Scan code  
for more  
property  
details

