







540 Somerset
Golden, CO 80401
COMMUNITY: Lakota Hills

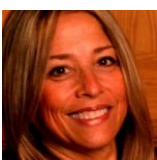
MLS # 9024497
PRICE \$875,000



 Single Family  2392 SQFT  3 Beds  2/1 Baths  2 Car  0.14 Acre

PROPERTY DETAILS

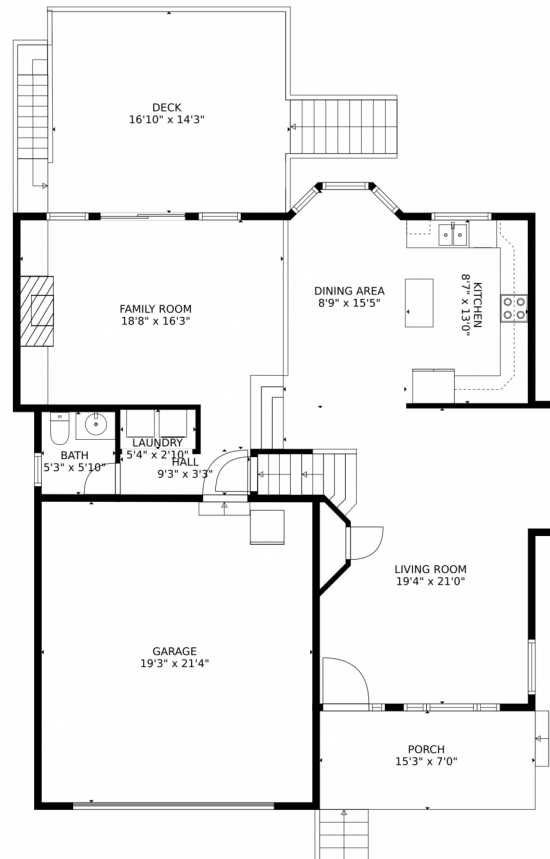
THIS IS THE ONE! This remarkable home has both Mountain and city Views. Light and Bright with windows on every floor. Sit and relax with your favorite glass of wine and take in the beauty of Golden on your private deck and hot tub. Private vistas overlooking Table Mesa to the South and North and Imposing views to the West out the living room window! Light and bright, relaxing and calm. Hands down this home is the absolute best value in Golden. This outstanding home has many updates. New flooring, new designer hand crafted railings, new concrete work, new deck, new paint, solar, tankless water heater, state of the art upright washer and dryer! Located a minute or two to Jeffco Government Center and Downtown Golden. One minute to the light rail. Walk to coffee in the am or stroll the trails just minutes outside your front door! Fantastic schools and shopping!
Bonus!! This home has an unfinished walkout basement with it's own private entrance that can be finished for a mother-in-law, an office, an air bnb, visitor, you name it!



Susan Keeney
720-232-5258
sue@realnetcolorado.com



540 Somerset, Golden, CO 80401 — 1st Floor



GROSS INTERNAL AREA
FLOOR 1: 359 sq. ft. FLOOR 2: 942 sq. ft.
FLOOR 3: 773 sq. ft. EXCLUDED AREAS:
UNFINISHED BASEMENT: 528 sq. ft. GARAGE: 411 sq. ft.
DECK: 296 sq. ft. PORCH: 107 sq. ft.
TOTAL: 2073 sq. ft.
MEASUREMENTS CALCULATED BY V1Photos.COM ARE DEEMED HIGHLY RELIABLE BUT NOT GUARANTEED.



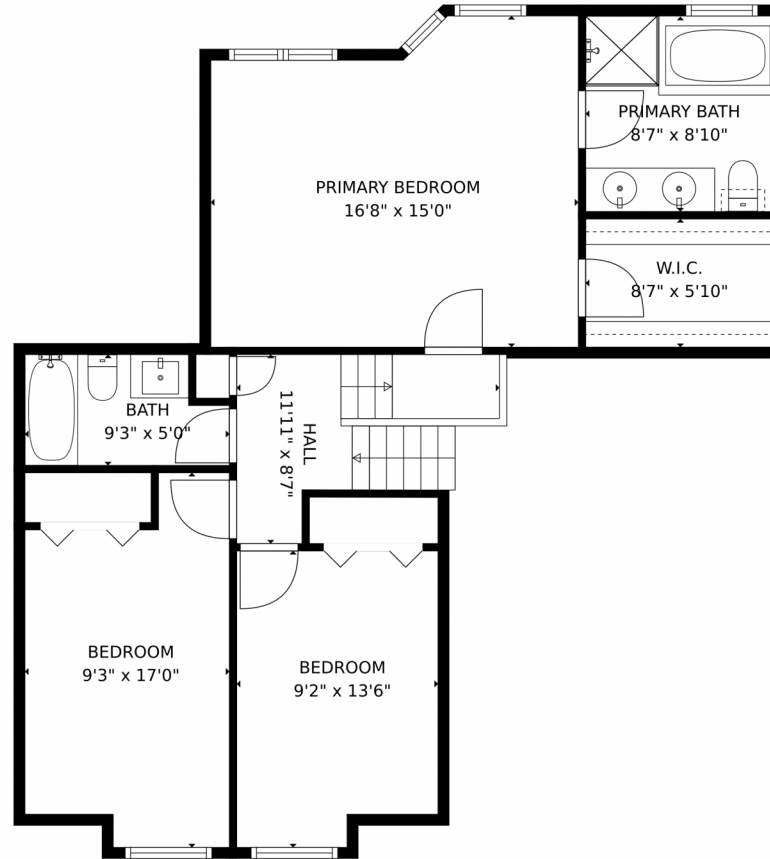
Disclaimer: Sizes and Dimensions are Approximate, Actual May Vary.



Susan Keeney
720-232-5258
sue@realnetcolorado.com



540 Somerset, Golden, CO 80401 – 2nd Floor



GROSS INTERNAL AREA
FLOOR 1: 359 sq. ft. FLOOR 2: 942 sq. ft.
FLOOR 3: 773 sq. ft. EXCLUDED AREAS:
UNFINISHED BASEMENT: 528 sq. ft. GARAGE: 411 sq. ft.
DECK: 296 sq. ft. PORCH: 107 sq. ft.
TOTAL: 2073 sq. ft.
MEASUREMENTS CALCULATED BY V1Photos.COM ARE DEEMED HIGHLY RELIABLE BUT NOT GUARANTEED.



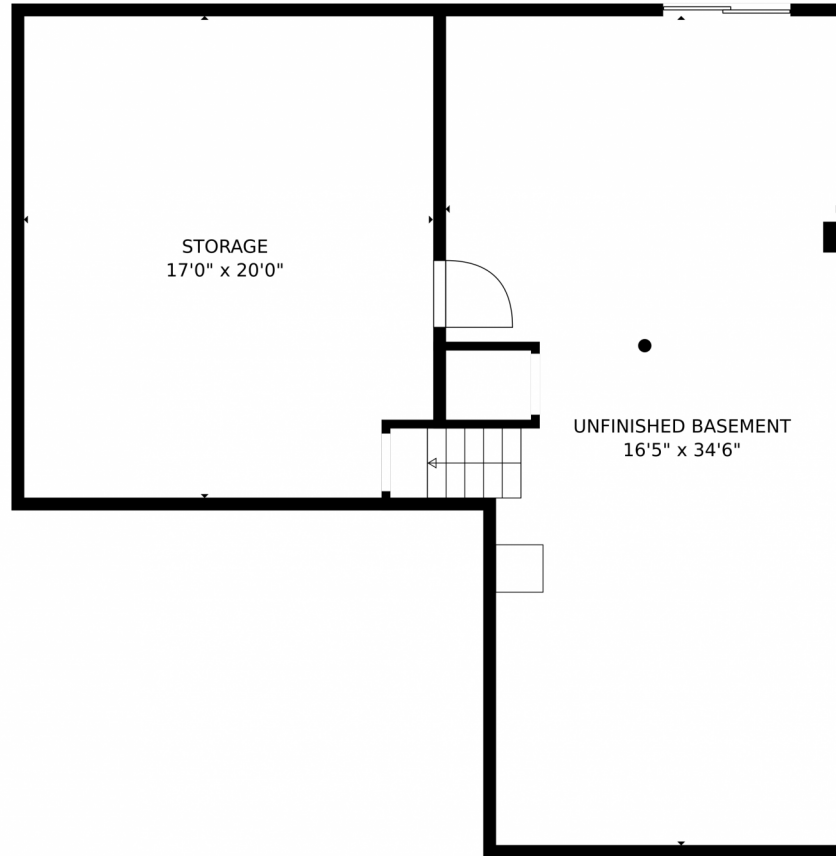
Disclaimer: Sizes and Dimensions are Approximate, Actual May Vary.



Susan Keeney
720-232-5258
sue@realnetcolorado.com



540 Somerset, Golden, CO 80401 — Basement



GROSS INTERNAL AREA
FLOOR 1: 359 sq. ft. FLOOR 2: 942 sq. ft.
FLOOR 3: 773 sq. ft. EXCLUDED AREAS:
UNFINISHED BASEMENT: 528 sq. ft. GARAGE: 411 sq. ft.
DECK: 296 sq. ft. PORCH: 107 sq. ft.
TOTAL: 2073 sq. ft.

MEASUREMENTS CALCULATED BY V1Photos.COM ARE DEEMED HIGHLY RELIABLE BUT NOT GUARANTEED.



Disclaimer: Sizes and Dimensions are Approximate, Actual May Vary.



Susan Keeney
720-232-5258
sue@realnetcolorado.com



540 Somerset, Golden, CO 80401 – All Floors



GROSS INTERNAL AREA
FLOOR 1: 359 sq. ft. FLOOR 2: 942 sq. ft
FLOOR 3: 773 sq. ft. EXCLUDED AREAS:
UNFINISHED BASEMENT: 528 sq. ft. GARAGE: 411 sq. ft
DECK: 296 sq. ft. PORCH: 107 sq. ft
TOTAL: 2073 sq. ft
MEASUREMENTS CALCULATED BY V1Photos.COM ARE DEEMED HIGHLY RELIABLE BUT NOT GUARANTEED.



Disclaimer: Sizes and Dimensions are Approximate, Actual May Vary.



Susan Keeney
720-232-5258
sue@realnetcolorado.com

