



2900 Salerno Way
 Delray Beach, FL 33445
 COMMUNITY: VERONA WOODS

MLS # R10877948
 PRICE \$925,000



Single Family



2496 SQFT



3 Beds



2 Baths



2 Car



0.3 Acre



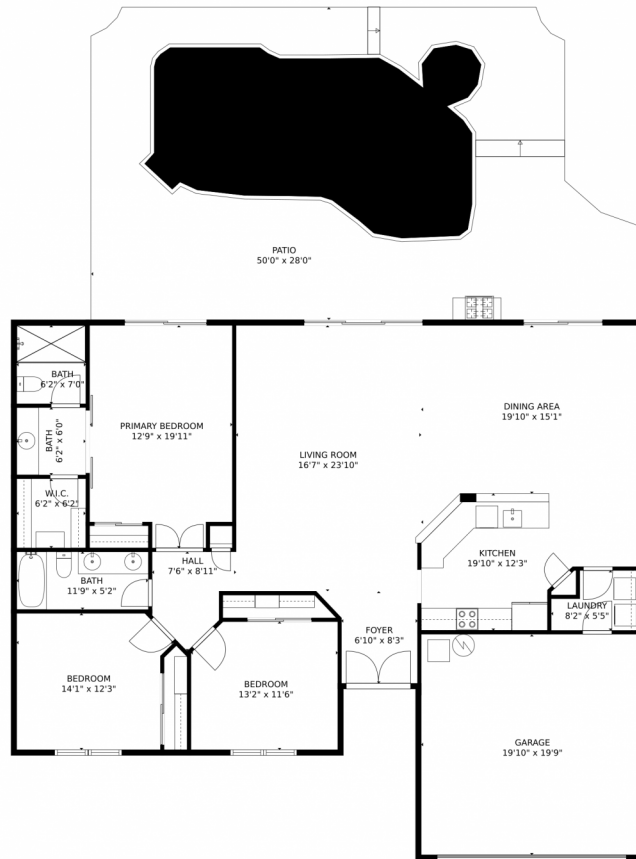
Bob Weyrauch
 561-305-1491
 BobWeyrauch@BHHSFloridaRealty.net



Scan code
 for more
 property
 details



2900 Salerno Way, Delray Beach, FL 33445 – Main Floor



GROSS INTERNAL AREA
FLOOR 1: 1874 sq. ft. EXCLUDED AREAS:
GARAGE: 392 sq. ft. PATIO: 1254 sq. ft.
TOTAL: 1874 sq. ft.
MEASUREMENTS CALCULATED BY V1Photos.COM ARE DEEMED HIGHLY RELIABLE BUT NOT GUARANTEED.



Disclaimer: Sizes and Dimensions are Approximate, Actual May Vary.



Bob Weyrauch
561-305-1491
BobWeyrauch@BHHSFloridaRealty.net

