




 Single Family

 862 SQFT

 2 Beds

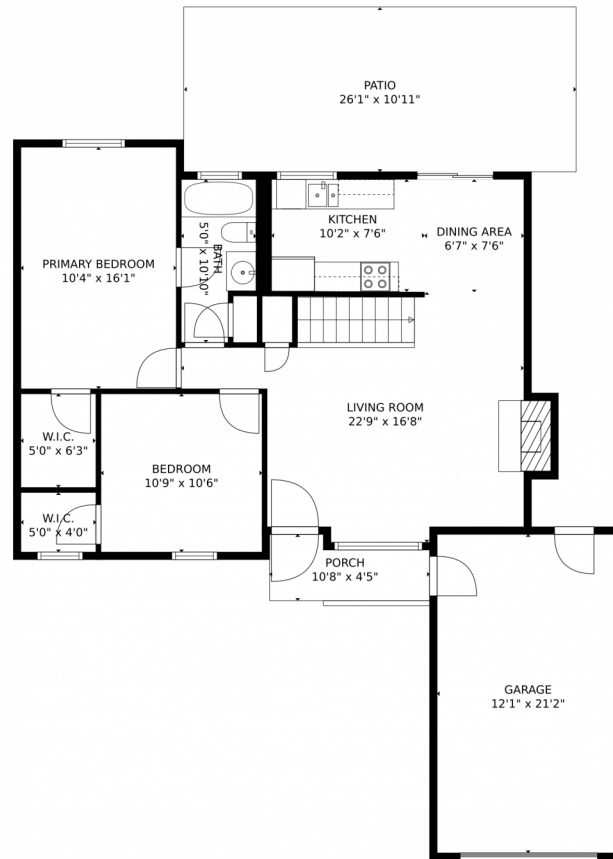
 1 Baths



Taylor Haas
303-665-7368
taylorh@coloradorpm.com
<https://www.coloradorpm.com/available-rental-properties-denver>



6233 Alkire Ct, Arvada, CO 80004 – 1st Floor



GROSS INTERNAL AREA
FLOOR 1: 10 sq. ft, FLOOR 2: 838 sq. ft
EXCLUDED AREAS: , UNFINISHED BASEMENT: 724 sq. ft
GARAGE: 257 sq. ft, PATIO: 286 sq. ft
PORCH: 40 sq. ft
TOTAL: 847 sq. ft

MEASUREMENTS CALCULATED BY V1Photos.COM ARE DEEMED HIGHLY RELIABLE BUT NOT GUARANTEED.



Disclaimer: Sizes and Dimensions are Approximate, Actual May Vary.



Taylor Haas

303-665-7368

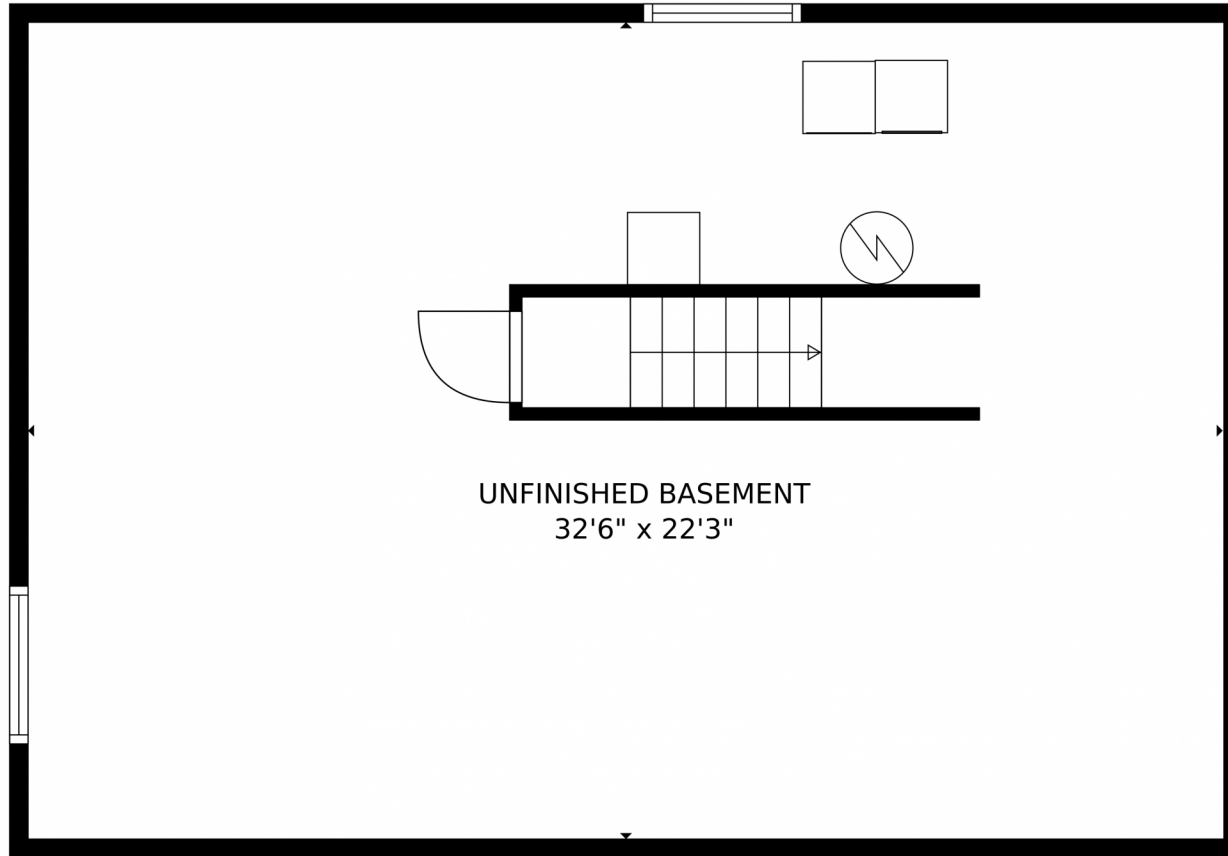
taylorh@coloradorpm.com

<https://www.coloradorpm.com/available-rental-properties-denver>



Scan code
for more
property
details





GROSS INTERNAL AREA
FLOOR 1: 10 sq. ft., FLOOR 2: 838 sq. ft.
EXCLUDED AREAS: , UNFINISHED BASEMENT: 724 sq. ft.
GARAGE: 257 sq. ft., PATIO: 286 sq. ft.
PORCH: 40 sq. ft.
TOTAL: 847 sq. ft.

MEASUREMENTS CALCULATED BY V1Photos.COM ARE DEEMED HIGHLY RELIABLE BUT NOT GUARANTEED.



Disclaimer: Sizes and Dimensions are Approximate, Actual May Vary.



Taylor Haas

303-665-7368

taylorh@coloradorpm.com

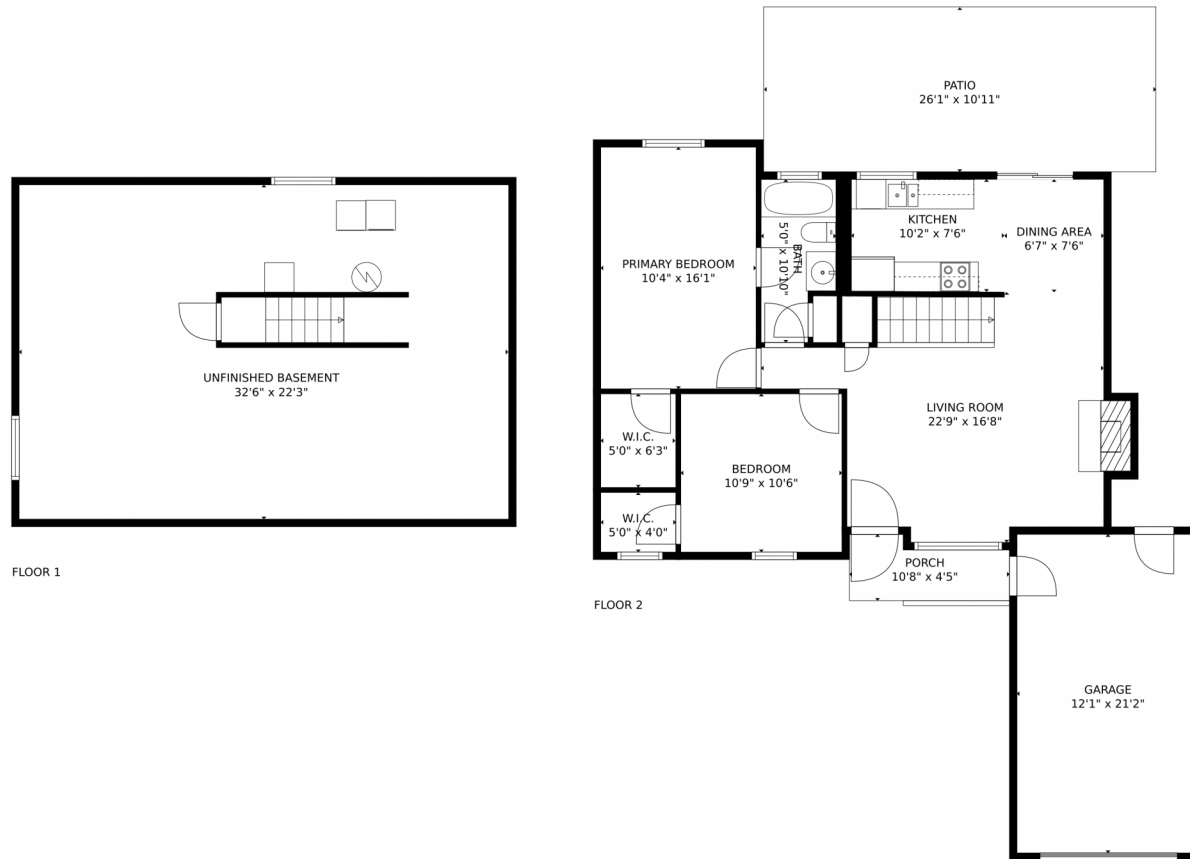
<https://www.coloradorpm.com/available-rental-properties-denver>



Scan code
for more
property
details



6233 Alkire Ct, Arvada, CO 80004 – All Floors



GROSS INTERNAL AREA
FLOOR 1: 10 sq. ft., FLOOR 2: 838 sq. ft.
EXCLUDED AREAS: , UNFINISHED BASEMENT: 724 sq. ft.
GARAGE: 257 sq. ft., PATIO: 286 sq. ft.
PORCH: 40 sq. ft.
TOTAL: 847 sq. ft.

MEASUREMENTS CALCULATED BY V1Photos.com ARE DEEMED HIGHLY RELIABLE BUT NOT GUARANTEED.



Disclaimer: Sizes and Dimensions are Approximate, Actual May Vary.



Taylor Haas

303-665-7368

taylorh@coloradorpm.com

<https://www.coloradorpm.com/available-rental-properties-denver>



Scan code
for more
property
details

