



8812 Antero Court
 Arvada, CO 80007
 COMMUNITY: Leyden Rock

MLS # 4203257

PRICE
 \$1,350,000

Beautiful executive home on Antero Ct, gorgeous enclave of Leyden Rock



Single Family



4564 SQFT



6 Beds



3/1 Baths



3 Car



0.21 Acre

PROPERTY DETAILS

The most gorgeous views in all of Leyden rock, seen from every main living space in the home, including master & basement. Come see for yourself, it's a true stunner! \$90k premium lot & you will see why. Also \$100k builder upgrades & \$100k post construction upgrades. Custom Ranch Craftsman w/walkout basement & multiple ext living spaces. Antero Ct is the best street in Leyden Rock. Larger, more upgraded homes w/undisputed views. Driving up you will notice location, set high in Leyden Rock, you will experience Antero as the upgraded enclave. As you walk to entry, notice added seating area. Upon entry you immediately see the dramatic views, handsome wood floors & attention to details of this well appointed executive home. Living, dining & kitchen are open & expansive, tall coffered ceilings. Enjoy this chef's kitchen with a 12' Calcutta marble island. No expense spared in over 30k upgraded cabinetry. Chef Grade Top of Line Kitchen Aid SS appliances: 36" 6-Burner Gas Chef Style Cooktop, 36" 400 CFM Chimney Hood, 30" Double Oven w/ Dual Convection, Dishwasher w/hidden Controls, SS Tub, and



Brenda Meyers
 303-883-5856
 brenda.meyers@exprealty.com



Scan code
 for more
 property
 details



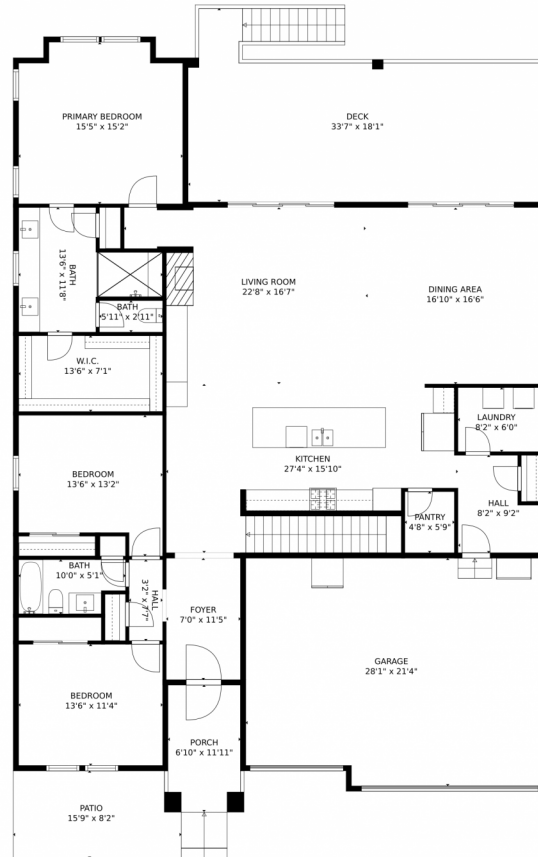
3 Racks, 2.2 CF Microwave built-in. More post construction upgrades are the custom mantle & tile fireplace surround, Plantation shutters, walkout dining or living to expansive covered deck w/access to yard - cooking, dining & living w/gas line. Main level Primary suite w/more extraordinary views. Primary bath has 10k upgraded cabinetry & built in bench, double headed shower. Completely finished walkout basement has upgraded carpet & pad, two bedrooms w/jack & jill bath, an additional large bedroom (non-conforming) & a half bath. Walkout to covered patio has newer deep seated hot tub. Access to yard & another patio/entertaining area w/gas line. Three rear yard entertaining areas. Upgrades incl superior solar system (ask agent for solar supplement, save \$1000s annually.) Whole home humidifier too. Community house & pool. Come and experience 8812 Antero Ct.



Brenda Meyers
303-883-5856
brenda.meyers@exprealty.com



8812 Antero Court, Arvada, CO 80007 – Main Level



GROSS INTERNAL AREA
FLOOR 1: 2031 sq. ft, FLOOR 2: 2180 sq. ft
EXCLUDED AREAS: , PATIO: 1001 sq. ft
GARAGE: 580 sq. ft, DECK: 458 sq. ft
PORCH: 80 sq. ft
TOTAL: 4211 sq. ft
MEASUREMENTS CALCULATED BY V1Photos.COM ARE DEEMED HIGHLY RELIABLE BUT NOT GUARANTEED.



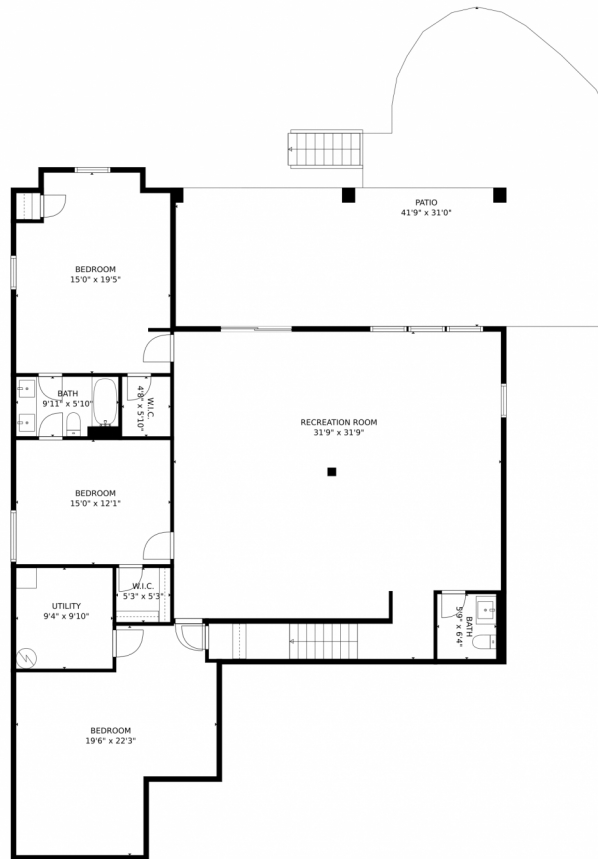
Disclaimer: Sizes and Dimensions are Approximate, Actual May Vary.



Brenda Meyers
303-883-5856
brenda.meyers@exprealty.com



8812 Antero Court, Arvada, CO 80007 – Lower Level



GROSS INTERNAL AREA
FLOOR 1: 2031 sq. ft, FLOOR 2: 2180 sq. ft
EXCLUDED AREAS: , PATIO: 1001 sq. ft
GARAGE: 580 sq. ft, DECK: 458 sq. ft
PORCH: 80 sq. ft
TOTAL: 4211 sq. ft

MEASUREMENTS CALCULATED BY V1Photos.COM ARE DEEMED HIGHLY RELIABLE BUT NOT GUARANTEED.



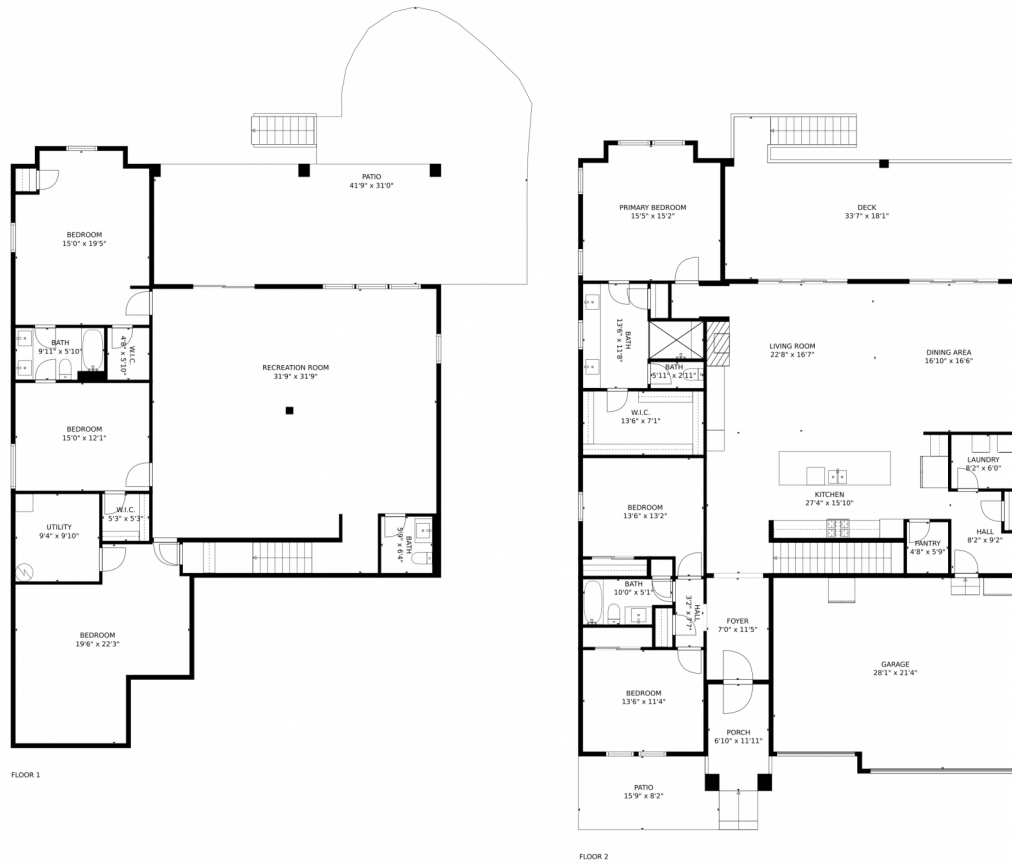
Disclaimer: Sizes and Dimensions are Approximate, Actual May Vary.



Brenda Meyers
303-883-5856
brenda.meyers@exprealty.com



8812 Antero Court, Arvada, CO 80007 – All Levels



GROSS INTERNAL AREA
FLOOR 1: 2031 sq. ft, FLOOR 2: 2180 sq. ft
EXCLUDED AREAS: , PATIO: 1001 sq. ft
GARAGE: 580 sq. ft, DECK: 458 sq. ft
PORCH: 80 sq. ft
TOTAL: 4211 sq. ft
MEASUREMENTS CALCULATED BY V1Photos.com ARE DEEMED HIGHLY RELIABLE BUT NOT GUARANTEED.



Disclaimer: Sizes and Dimensions are Approximate, Actual May Vary.



Brenda Meyers
303-883-5856
brenda.meyers@exprealty.com

