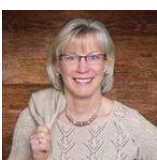




 Single Family  4790 SQFT  5 Beds  4/1 Baths  3 Car  0.2 Acre

PROPERTY DETAILS

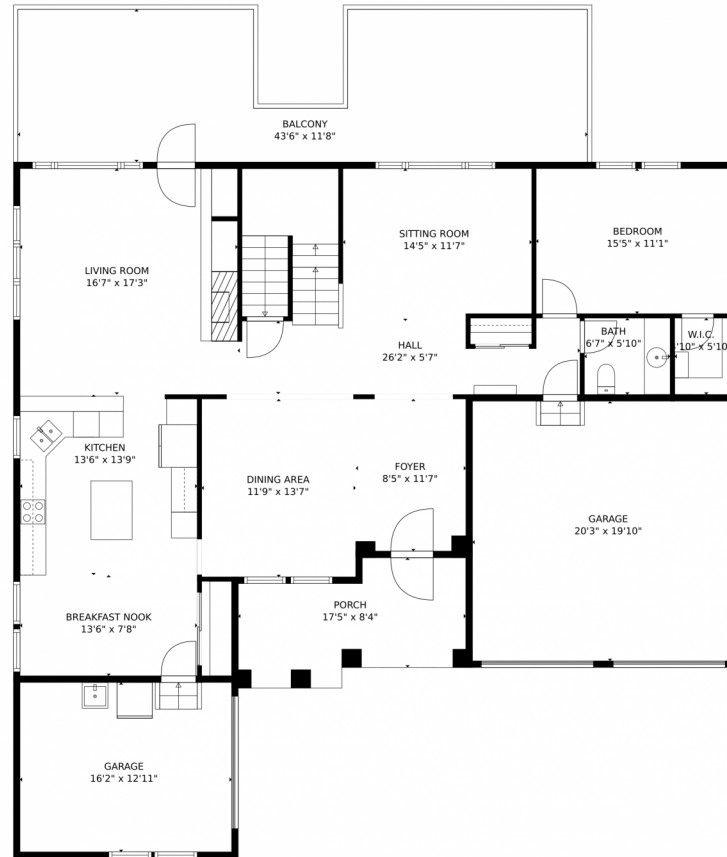
Meticulously maintained and professionally updated by a design professional, this Tallyn's Reach home is surrounded by pine trees and has beautiful mountain views! It is located directly across from a peaceful park and has an easement behind the home giving you the feel of privacy. It is conveniently located within walking distance of the neighborhood clubhouse and pool. Main floor upgrades include a full-kitchen facelift with soft close hinges on cabinets and drawers, granite countertops, center island with storage, updated lighting and large pantry. The family room opens onto an expansive deck with pergola that spans almost the entire length of the home. The deck was updated with low maintenance materials, including aluminum and glass railings to maximize the mountain views. Entertaining is easy, with the living room and dining area open to one another. A home office, with walk in closet for storage, and adjacent guest bath are conveniently located on the main floor. For efficient heating and cooling, there are two furnaces and air conditioners along with upgraded Low-E windows on the west facing main floor. An outstanding feature of this home is the oversized primary suite and professionally remodeled luxurious bathroom, with large double headed shower, freestanding soaking tub, double vanity and new lighting. Families will love the finished walkout basement, with great room, partial kitchen and a separate bedroom suite with private entrance.



Jennifer Franklin
407-716-3500
coloradoresales@gmail.com
<https://oneandonlycolorado.kw.com/>



24621 E Park Crescent Drive, Aurora, CO 80016 – Main Level



GROSS INTERNAL AREA
FLOOR 1: 1428 sq. ft. FLOOR 2: 1523 sq. ft.
FLOOR 3: 1633 sq. ft. EXCLUDED AREAS:
PATIO: 897 sq. ft. GARAGE: 610 sq. ft.
BALCONY: 452 sq. ft. PORCH: 139 sq. ft.
TOTAL: 4585 sq. ft.

MEASUREMENTS CALCULATED BY V1Photos.com ARE DEEMED HIGHLY RELIABLE BUT NOT GUARANTEED.



Disclaimer: Sizes and Dimensions are Approximate, Actual May Vary.

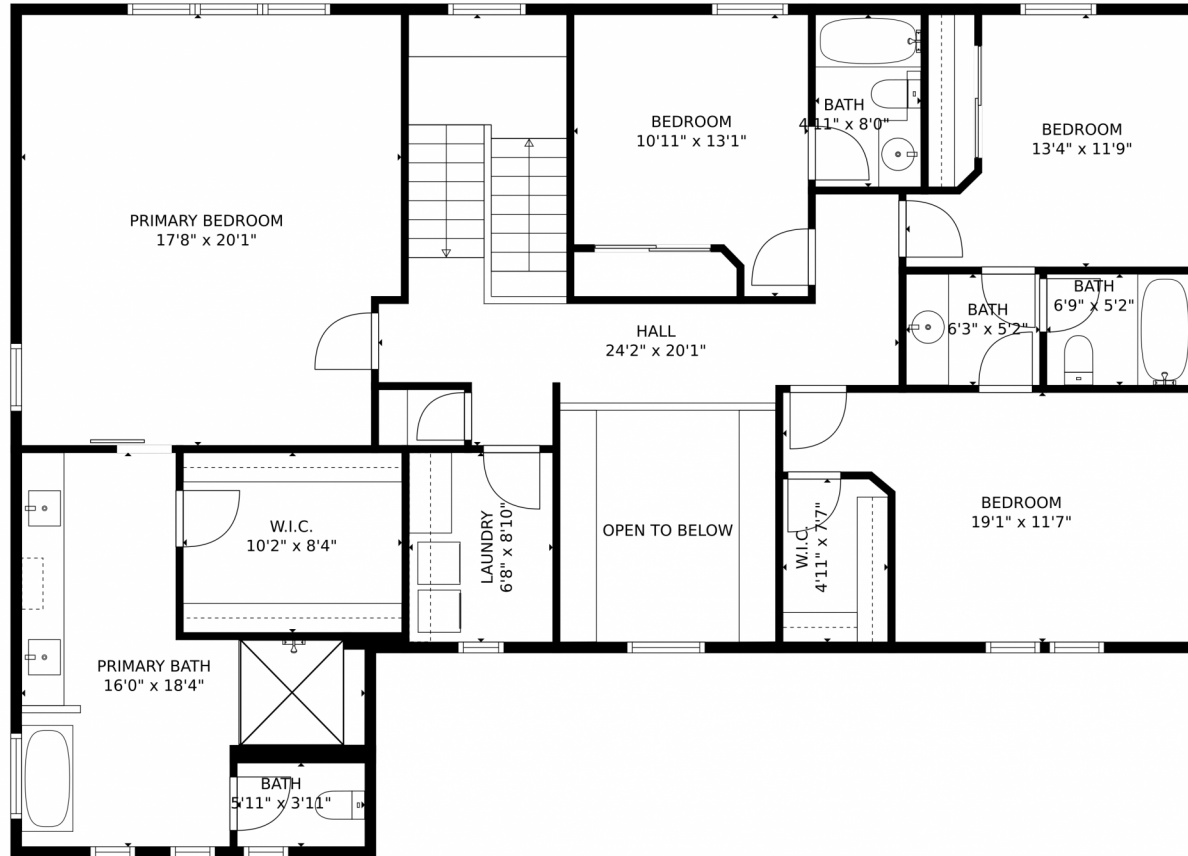


Jennifer Franklin
407-716-3500
coloradoresales@gmail.com
<https://oneandonlycolorado.kw.com/>



Scan code
for more
property
details

24621 E Park Crescent Drive, Aurora, CO 80016 – 2nd Level



GROSS INTERNAL AREA
FLOOR 1: 1428 sq. ft. FLOOR 2: 1523 sq. ft.
FLOOR 3: 1633 sq. ft. EXCLUDED AREAS:
PATIO: 897 sq. ft. GARAGE: 610 sq. ft.
BALCONY: 452 sq. ft. PORCH: 139 sq. ft.
TOTAL: 4585 sq. ft.
MEASUREMENTS CALCULATED BY V1Photos.com ARE DEEMED HIGHLY RELIABLE BUT NOT GUARANTEED.



Disclaimer: Sizes and Dimensions are Approximate, Actual May Vary.

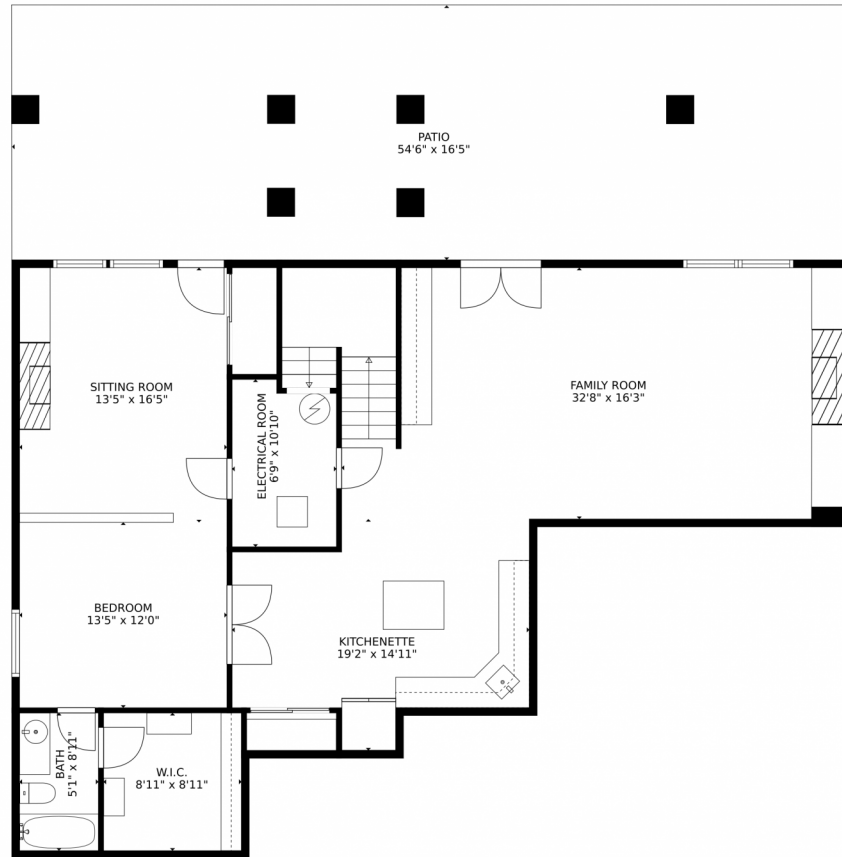


Jennifer Franklin
407-716-3500
coloradoresales@gmail.com
<https://oneandonlycolorado.kw.com/>



Scan code
for more
property
details

24621 E Park Crescent Drive, Aurora, CO 80016 – Lower Level



GROSS INTERNAL AREA
FLOOR 1: 1428 sq. ft, FLOOR 2: 1523 sq. ft
FLOOR 3: 1633 sq. ft, EXCLUDED AREAS:
PATIO: 897 sq. ft, GARAGE: 610 sq. ft
BALCONY: 452 sq. ft, PORCH: 139 sq. ft
TOTAL: 4585 sq. ft

MEASUREMENTS CALCULATED BY V1Photos.com ARE DEEMED HIGHLY RELIABLE BUT NOT GUARANTEED.



Disclaimer: Sizes and Dimensions are Approximate, Actual May Vary.



Jennifer Franklin
407-716-3500
coloradoresales@gmail.com
<https://oneandonlycolorado.kw.com/>



24621 E Park Crescent Drive, Aurora, CO 80016 – All Levels



GROSS INTERNAL AREA
FLOOR 1: 1428 sq. ft, FLOOR 2: 1523 sq. ft
FLOOR 3: 1633 sq. ft, EXCLUDED AREAS:
PATIO: 897 sq. ft, GARAGE: 610 sq. ft
BALCONY: 452 sq. ft, PORCH: 139 sq. ft
TOTAL: 4585 sq. ft
MEASUREMENTS CALCULATED BY V1Photos.COM ARE DEEMED HIGHLY RELIABLE BUT NOT GUARANTEED.



Disclaimer: Sizes and Dimensions are Approximate, Actual May Vary.



Jennifer Franklin
407-716-3500
coloradosales@gmail.com
<https://oneandonlycolorado.kw.com/>

