


 Single Family

 924 SQFT

 2 Beds

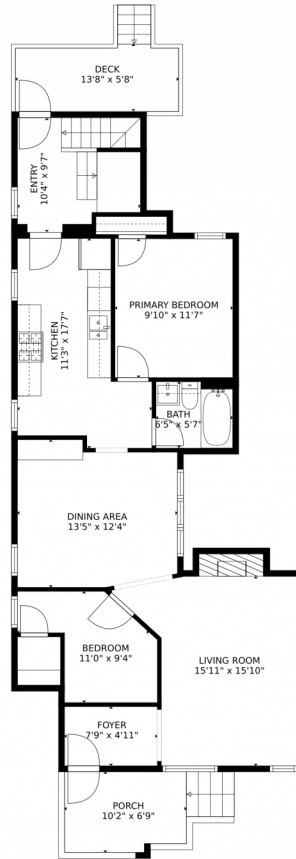
 1 Baths



Taylor Haas
303-665-7368
taylorh@coloradorpm.com
<https://www.coloradorpm.com/available-rental-properties-denver>



1239 N Lafayette St, Denver, CO 80218 – 1st Floor



GROSS INTERNAL AREA
FLOOR 1: 0 sq. ft, FLOOR 2: 927 sq. ft
EXCLUDED AREAS: , UNFINISHED BASEMENT: 155 sq. ft
DECK: 83 sq. ft, PORCH: 66 sq. ft
TOTAL: 927 sq. ft

MEASUREMENTS CALCULATED BY V1Photos.COM ARE DEEMED HIGHLY RELIABLE BUT NOT GUARANTEED.



Disclaimer: Sizes and Dimensions are Approximate, Actual May Vary.

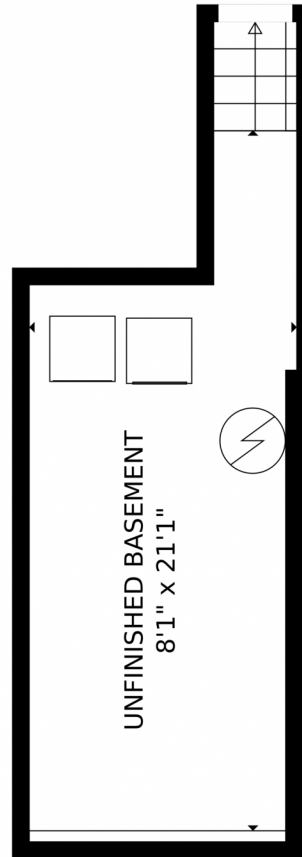


Taylor Haas
303-665-7368
taylorh@coloradorpm.com
<https://www.coloradorpm.com/available-rental-properties-denver>



Scan code
for more
property
details





GROSS INTERNAL AREA
FLOOR 1: 0 sq. ft, FLOOR 2: 927 sq. ft
EXCLUDED AREAS: , UNFINISHED BASEMENT: 155 sq. ft
DECK: 83 sq. ft, PORCH: 66 sq. ft
TOTAL: 927 sq. ft

MEASUREMENTS CALCULATED BY V1Photos.com ARE DEEMED HIGHLY RELIABLE BUT NOT GUARANTEED.



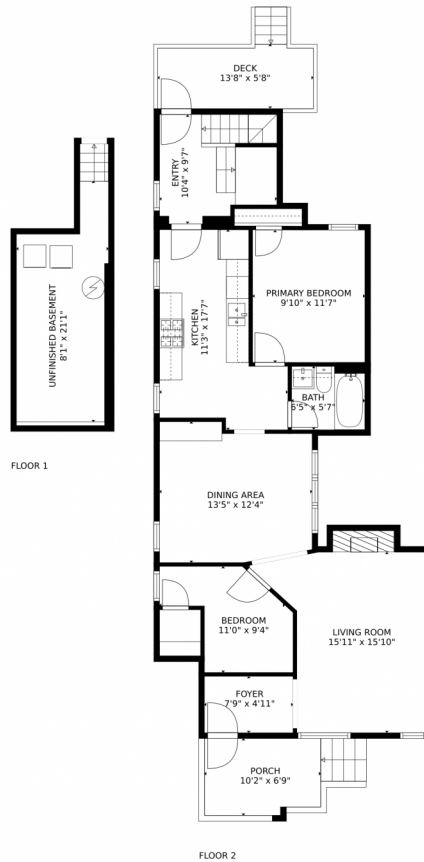
Disclaimer: Sizes and Dimensions are Approximate, Actual May Vary.



Taylor Haas
303-665-7368
taylorh@coloradorpm.com
<https://www.coloradorpm.com/available-rental-properties-denver>



1239 N Lafayette St, Denver, CO 80218 – All Floors



GROSS INTERNAL AREA
FLOOR 1: 0 sq. ft., FLOOR 2: 927 sq. ft.
EXCLUDED AREAS: , UNFINISHED BASEMENT: 155 sq. ft.
DECK: 83 sq. ft., PORCH: 66 sq. ft.
TOTAL: 927 sq. ft.

MEASUREMENTS CALCULATED BY V1Photos.com ARE DEEMED HIGHLY RELIABLE BUT NOT GUARANTEED.



Disclaimer: Sizes and Dimensions are Approximate, Actual May Vary.



Taylor Haas

303-665-7368

taylorh@coloradorpm.com

<https://www.coloradorpm.com/available-rental-properties-denver>



Scan code
for more
property
details

